



Installation instructions

LP Adventure lift kit

2015+ Subaru Outback



Necessary tools :

- We recommend the use of a lift
- Stand to support the subframe
- Ratchet
- 12mm Socket
- 14mm Socket
- 17mm Socket
- 19mm Socket
- 22mm Socket
- 12mm wrench
- 14mm wrench
- 17mm wrench
- Long nose pliers
- Torque wrench

1. Remove the wheels



2. Remove the bolts which connect the suspension and knuckle and that of endlink.



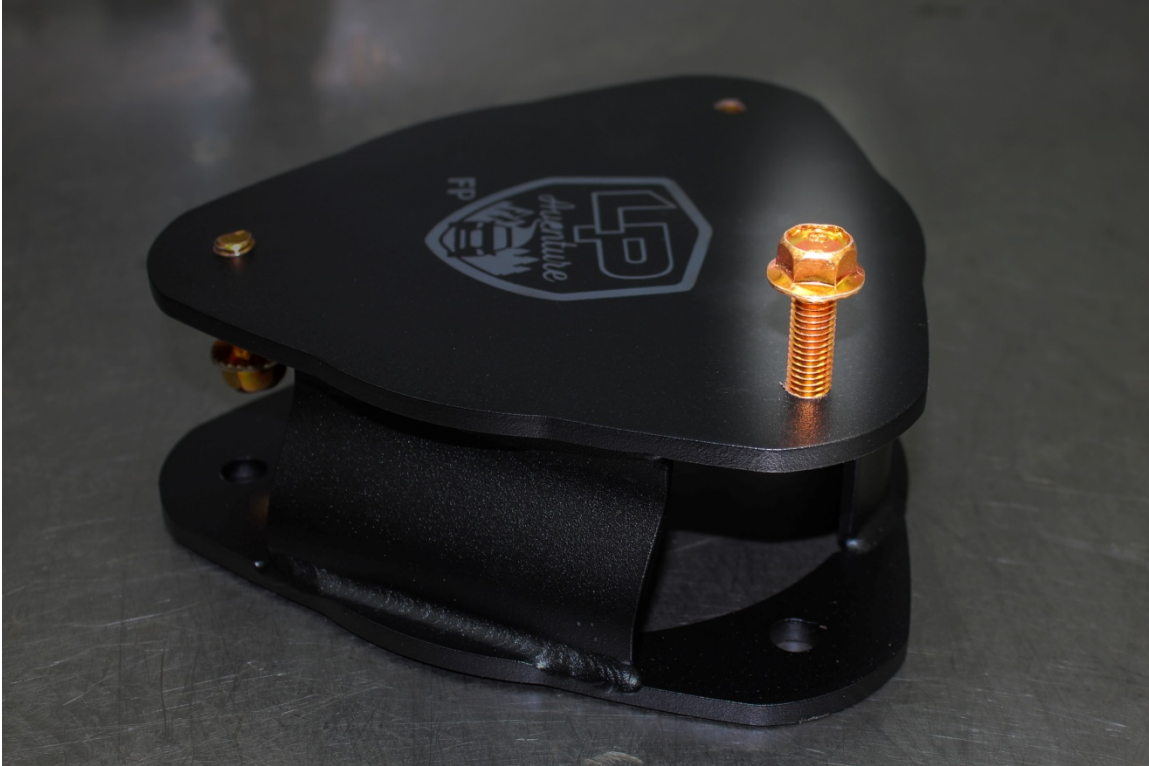
3. Unbolt the head of the suspension.

Note: Be careful, Not drop the suspension on the axel.



4. Insert the 6 bolts on the top plate spacers

Tip: You can use a bolt to remove paint deposits that might be in the bolt threads.
(Tap M8x1.25)



5. Install spacers on the head of the suspension

* **New Legend:** FR: Front right (Passenger side) / FL: Front left (Driver Side)



The rear.

6. Release the 3 brackets



7. Unbolt the bottom of the suspension



8. Release the bracket that holds the brake cable.



8.B – Install the spacer of the handbrake cable.



9.A - Install a crutch under the differential to support the subframe.

9.B - Unbolt one side of the subframe at a time to keep it aligned.

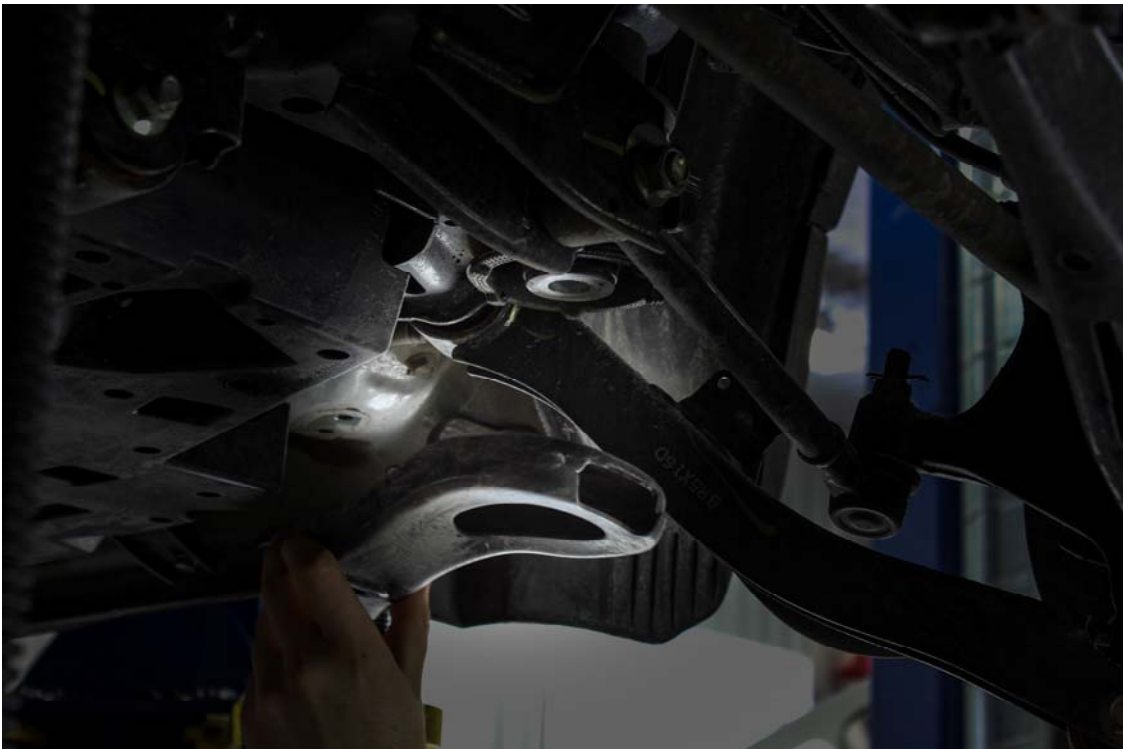
9.C - Remove the small bolts first and finalize with the big.

Note: Remove them one at a time, release the plate that connects all bolts and replace the large bolt in place to ensure the support of the sub-frame during installation.





10. Remove the sub-frame reinforcement.



11. Insert the rear spacers







12. Tighten the bolts to the manufacturer's specifications with a Torque Wrench.

Note: See attached documents.



13. Replace the plastic deflectors.



14. Remove the rear suspension.

Note: You must lift the carpet in the trunk for access.



15. Remove the link to the knuckle to give you the space required to remove the suspension.



**Note: You can use a bolt to remove paint deposits that might be in the bolt threads.
(Tap M10x1.25)**

16. Install the top plate spacers on suspension.





17. Replace the bolt that connects the steering knuckle and the suspension arm.

Note: Insert the bolt in the opposite direction to facilitate installation.



18. Install the supplied brackets for brake lines.



You have completed the installation.

Do a double check.

**Replace the wheels and be sure to tighten the nuts
with a wrench torque.**

Alignment with a specialist is recommended.

Thank you for your interest in our products.

For all requests for information or for assistance:

Contact our team by phone at

1 - (450) 562-0344

**We are available Monday to Friday between 8:00
and 17:00.**

Or by email at :

sales@lachuteperformance.com

www.lpaventure.com