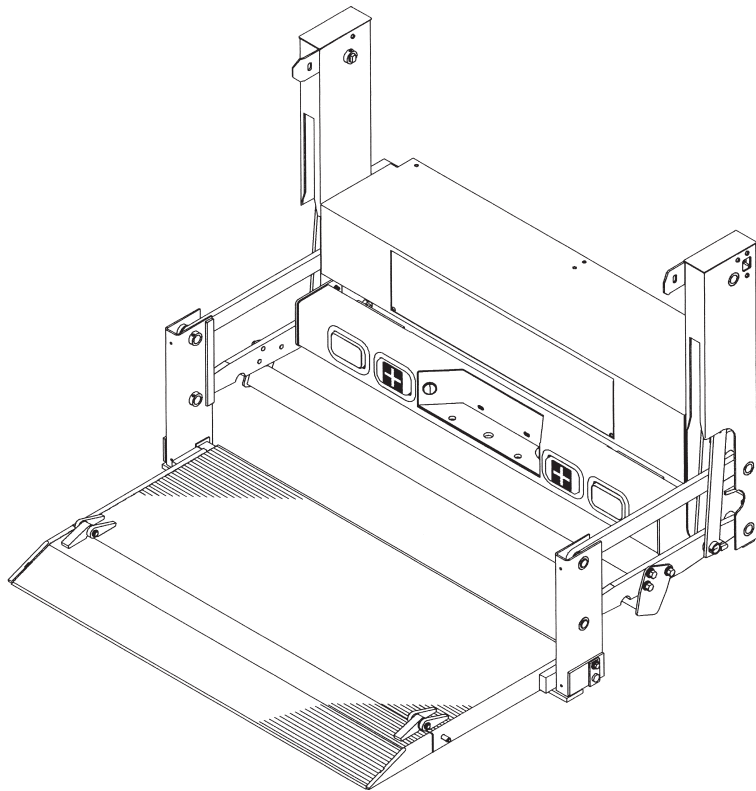


TopLIFTER

Tailgates By THIEMAN

TT-15 OWNERS MANUAL/PARTS LIST

SHOWN WITH OPTIONAL 2 PC. ALUMINUM PLATFORM AND LIGHT KIT



IMPORTANT! KEEP IN VEHICLE!

**PLEASE READ AND UNDERSTAND THE CONTENTS OF THIS
MANUAL BEFORE OPERATING THE EQUIPMENT.**



THIEMAN
TAILGATES, INC.

600 East Wayne Street
Celina, Ohio 45822

Phone: 419-586-7727 Fax: 419-586-9724

TABLE OF CONTENTS

WARNINGS	3
OPERATING INSTRUCTIONS.....	5
MAINTENANCE GUIDE.....	5
SEMI-ANNUAL INSPECTION	6
INSPECTION AND LOCATION OF DECALS.....	7
ELECTRICAL PICTORIALS.....	8
PARTS ORDERING PROCEDURE	8
PUMP & CYLINDER ASSEMBLY.....	9
UNDERCARRIAGE FOR NON-TORSION ASSIST PLATFORMS	10 & 11
26" DEEP STEEL DECKPLATE NON-TORSION ASSIST PLATFORMS ...	12
ALUMINUM EXTRUSION NON-TORSION ASSIST PLATFORMS	13
UNDERCARRIAGE AND 42" DEEP STEEL	
TORSION ASSIST PLATFORM ASM.....	14 & 15
UNDERCARRIAGE AND 44" DEEP STEEL	
TORSION ASSIST PLATFORM ASM.....	16 & 17
OPTIONAL BUMPER-LIGHT ASSEMBLY	18

FOR YOUR RECORDS

Model No. _____ Date Purchased _____

Serial No. _____

Your Thieman Tailgate is constructed of top quality material and is warranted to be free from defects in material and workmanship under normal use. With routine maintenance and proper operation this liftgate will provide long lasting service and dependability.

WARNING!

The following list of warnings are to be read before operating the TT series liftgate:

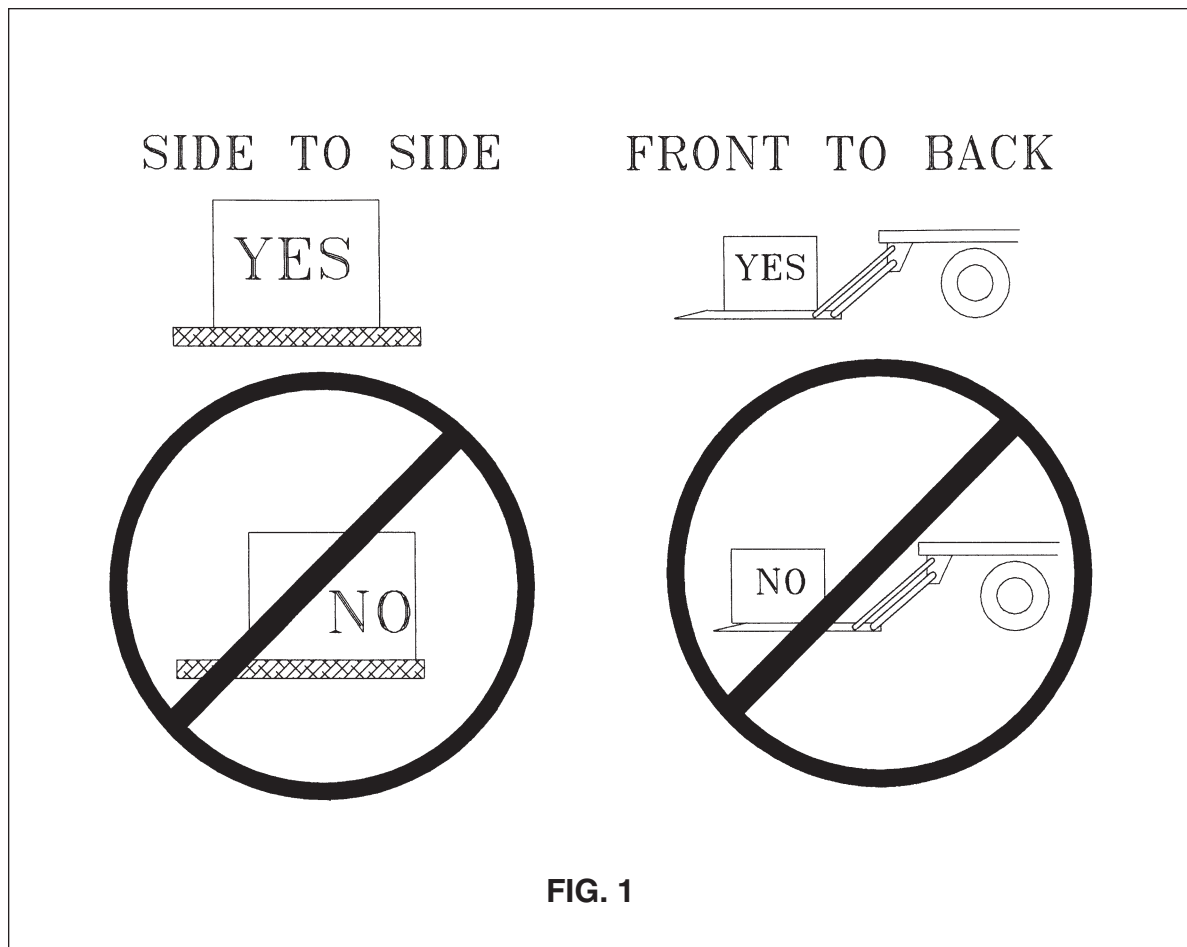
- +Read this Owner's Manual and all of the decals on the liftgate BEFORE operating the liftgate.
- +All protective covers and guards must be in place before operating the liftgate.
- +DO NOT operate the liftgate if you do not have a thorough knowledge and understanding of the operation of the liftgate.
- +NEVER OVERLOAD THE LIFTGATE! The maximum rated capacity of the TT15 series liftgates is as follows:

TT15 26" Deep Platforms - 1500 lbs. Maximum Load
TT15 30" and 32" Deep Platforms - 1250 lbs. Maximum Load
TT15 36" and 38" Deep Platforms - 1000 lbs. Maximum Load
TT15 42" and 44" Deep Platforms - 1000 lbs. Maximum Load

- +Never use the liftgate if it makes any unusual noises, has vibrations, or fails to operate freely.
- +Make certain that the area below the platform is clear before and at all times during operation of the liftgate.
- +Keep hands and feet clear of all pinch points.
- +The platform must be in the closed position with the latches engaged before transit.
- +Always load as close to the center of the platform and as close to the truck as possible. See figure 1.
- +Never operate lift trucks on or over any part of the platform.
- +Load and unload the platform from the rear and not from the side of the platform.
- +Only operate liftgate when vehicle is on level ground and parking brake is set.
- +Follow the maintenance guide as outlined in this manual.
- +DO NOT attempt any repairs unless you are a qualified and authorized THIEMAN distributor.
- +If any repairs, adjustments, or maintenance not covered in this manual are required, contact your nearest Thieman distributor or the factory.
- +DO NOT ride the liftgate, it is not intended as a personnel lift.
- +This liftgate is intended for the use of loading and unloading cargo only, and is not to be used for anything other than this.
- +DO NOT modify this liftgate. Altering this liftgate may cause serious personal injury or damage the liftgate and will void all warranties.
- +DO NOT weld or attach a receiver hitch to the liftgate's bumper in any way. Connecting a trailer to the bumper in anyway except with a ball hitch mounted in the supplied bumper hole or with a pin directly through this hole may cause serious personal injury or damage the liftgate and will void all warranties.

WATER LEVEL LOADING

When a maximum load is to be raised or lowered, this load must be centered on the load bearing platform, both front to back and side to side.



OPERATING INSTRUCTIONS

CAUTION:

Be sure to operate liftgate at a safe distance and never improperly load platform as this may cause personal injury or damage to the liftgate. ALWAYS SET PARKING BRAKE BEFORE OPERATING THIS LIFTGATE!

OPENING OF PLATFORM

STEP 1: Remove safety cotter pin from curb side lock pin.

STEP 2: Disengage lock pins with one hand while holding platform upright with the other hand. Unfold platform using both hands until it is in the horizontal position.

STEP 3: Push toggle switch down and lower platform to the ground.

RAISING OF PLATFORM

STEP 4: Push toggle switch up and raise platform to bed height.

LOWERING OF PLATFORM

STEP 5: Push toggle switch down and lower platform to the ground.

CLOSING

STEP 6: Raise platform to bed height and manually fold platform to the vertical position and be sure both lock pins are engaged. Replace cotter pin in curb side lock pin.

MAINTENANCE GUIDE

The following inspection and maintenance operations should be performed at the recommended intervals or anytime the liftgate shows signs of abuse, and improper or abnormal operation.

MONTHLY INSPECTION AND MAINTENANCE

Operate the liftgate throughout its entire operational cycle and check the following:

1. Check that there are no unusual noises or vibrations.
2. Check that the platform is level when raised to bed height.
3. Check for apparent damage to the liftgate such as bent or distorted members, any cracked welds, which may have resulted from overloading or abuse.
4. Check for any excessive wear in the following areas:
 - A. Platform Hinge Pins and Pivot Plates
 - B. All Pivot Points
 - C. All Cylinder Pins and Bolts
5. Check that all platform pivot pins are in place and retained by their proper retainers.
6. Check support cable for excessive wear and check that the locknuts on either end of the support cable are secure and pulling the cable tight between the pivot supports.
7. Check that all protective covers and guards are properly in place and secured.
8. Check for oil leaks in these areas:
 - A. Lift Cylinder
 - B. Hydraulic Hose - Replace if it shows signs of wear or cracking.
 - C. Hydraulic Fittings - Tighten or replace as may be required to stop leakage.
9. Check the oil level in the hydraulic reservoir. Release safety latches and lower gate to the ground, the oil should be within 1/2 inch from the top of the reservoir. See chart on next page.

HYDRAULIC FLUID CHART	
Temperature Range	Acceptable Fluids
-75 to 165° F	Exxon Univis J-26
-20 to 130° F	Dexron III Exxon Superflo ATF
-50 to 80° F	Shell Donax® TG Shell Aero Fluid 4 Mobil Aero HFA Exxon Univis J-13 MIL H-5606

9. Check that all wiring and battery cable connections are tight and free of corrosion.

10. Lubrication of the TT series gate should be as follows:

<u>Area of Tailgate</u>	<u>Type of Lubrication</u>	<u>Frequency</u>
Extension Pivot	SAE 10 to SAE 20 oil	50 cycles
Pump Oil Change	See Above Chart	Yearly

*The pivot points on the TT-15 have special bushings that do not require lubrication.

11. Check the pump relief pressure and also the motor amperage at this pressure. These values should be as follows:

Model	Max Amp Draw	Relief Pressure (psi)
TT15 26-32 Deep	155	2200
TT15 36-44 Deep	145	1800

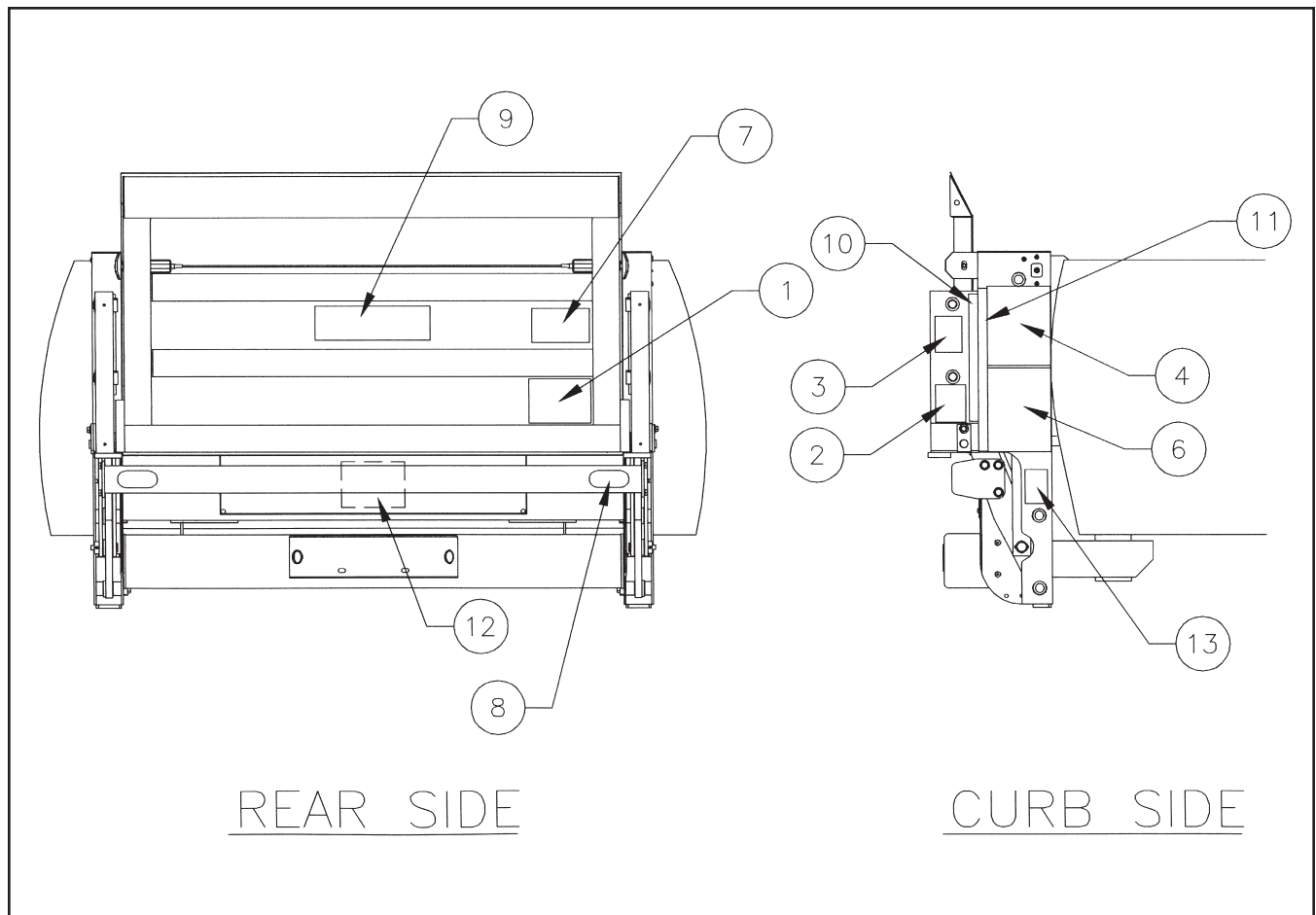
SEMI-ANNUAL INSPECTION

- Perform the procedures outlined in the "Monthly Inspection and Maintenance."
- Inspect pump motor by:
 - Disconnecting battery cable
 - Remove motor end cover
 - Examine the armature brushes for wear. (Brushes should be replaced if they are less than 1/8" long).
 - Clean out all residue from inside of the motor housing.
 - Apply several drops of light weight machine oil to the armature shaft bearing in the motor cover end and reassemble the motor end cover.
- If the hydraulic oil in the reservoir is dirty:
 - Lower the platform completely to the ground.
 - Drain the oil from the hydraulic system and flush the entire system.
 - Remove the reservoir from the pump and clean the suction line filter. Also clean out any contaminants from the reservoir. Remount the reservoir when completed.
 - Replace the oil as outlined in Section 8 under Monthly Maintenance and Inspection.

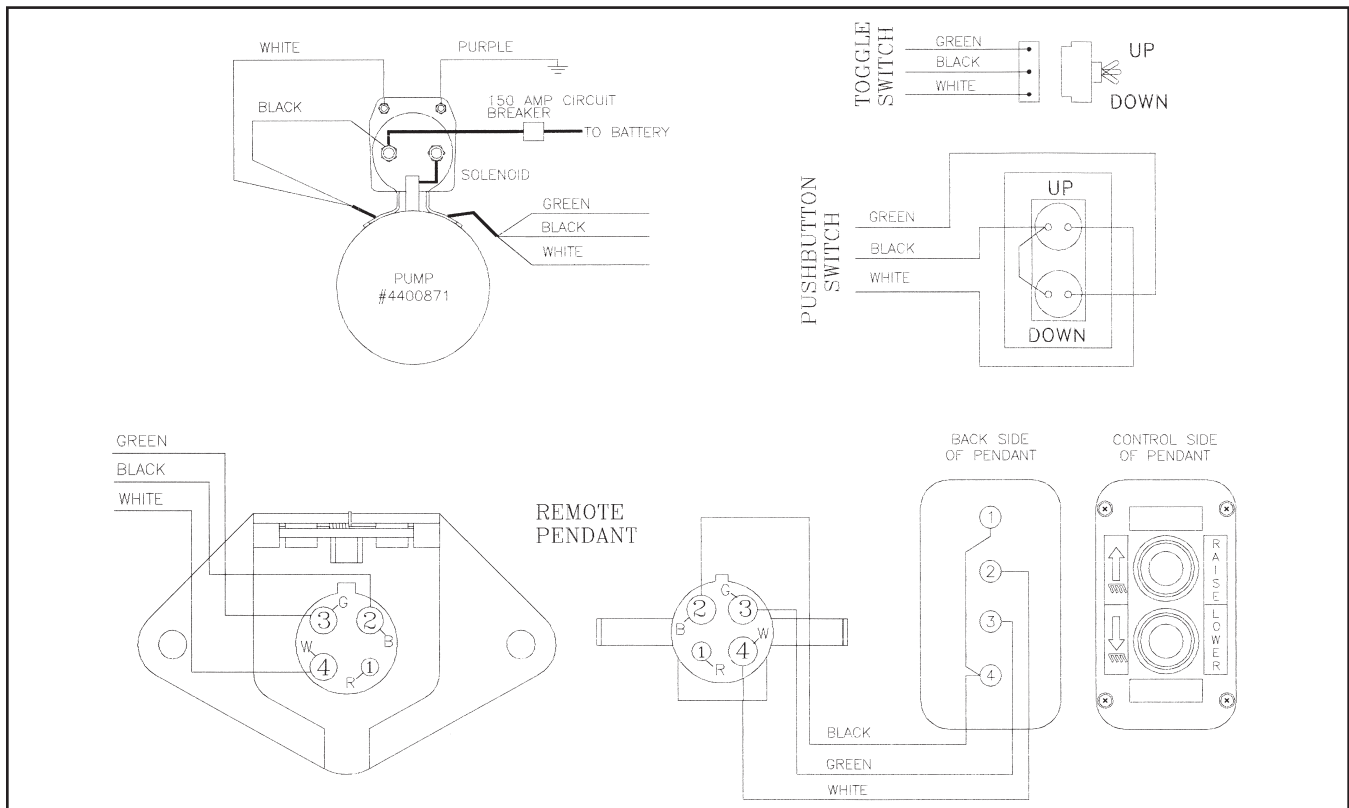
INSPECTION AND LOCATION OF DECALS

Inspect all of the decals listed below to be certain that they are in the proper location and they are legible. All decals must be in place and legible or all warranties are void!

Item	Part Name	Part Number
1	Warning Decal-Off Center	4671050
2	PTO Decal	4650140
2	Fast Idle Decal	4650150
3	Danger Decal-No Riding	4609
4	Operating Decal	4650870
5	Capacity Decal-1000#	4650050
5	Capacity Decal-1250#	4650060
5	Capacity Decal-1500#	4650070
6	Warning Decal	4650530
7	Caution Decal-Working Area	4650770
8	Reflector (2)	5705
9	Thieman Nameplate	4650801
10	Hazard Marking Tape-Pivot	5760-002
11	Hazard Marking Tape-Frame	5760-003
12	Wiring Decal	4659
13	Warning Decal-High Pressure	4620



ELECTRICAL PICTORIAL



PARTS ORDERING PROCEDURE

When ordering parts, please include all the information asked below. If this information is not available, a complete written description or sketch of the required part will help Thieman identify and deliver the needed part to you.

THE FOLLOWING INFORMATION MUST BE INCLUDED:

1. Serial Number - Thieman liftgate serial numbers can be found on the tag located on the outside of the curb side post near the bottom.
2. Model Number and Capacity.
3. Platform size and Material - Steel or Aluminum.
4. Part number.
5. Description.
6. Quantity required.

IMPORTANT

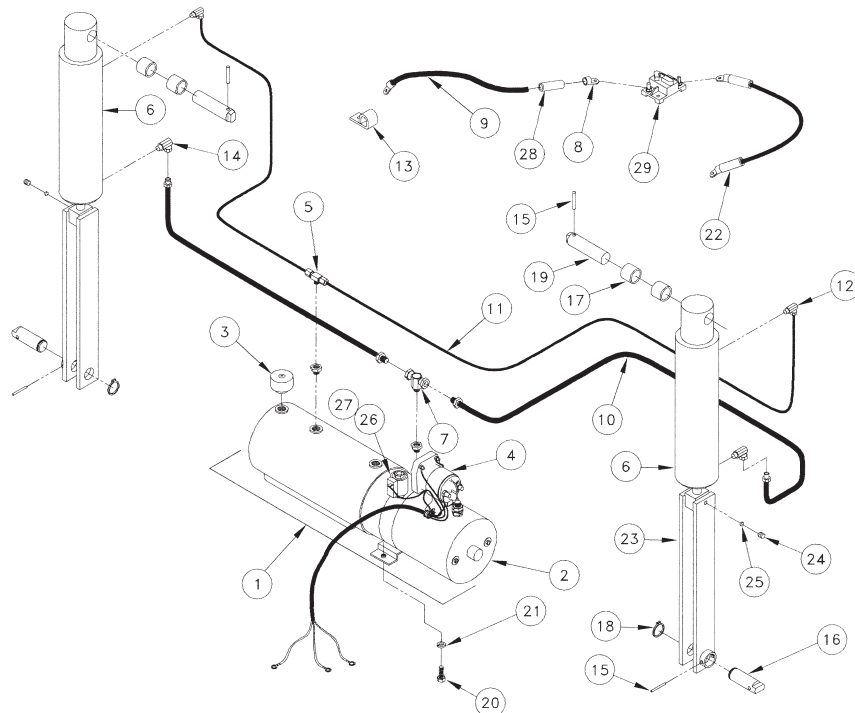
IT IS IMPORTANT THAT EVERY VEHICLE THAT HAS A THIEMAN LIFTGATE HAVE LEGIBLE WARNING AND OPERATION DECALS CLEARLY POSTED ON THE VEHICLE AND AN OWNER'S MANUAL IN THE VEHICLE AT ALL TIMES AS A GUIDE FOR PROPER OPERATION AND MAINTENANCE.

ADDITIONAL WARNING DECALS, OPERATION DECALS, AND OWNER'S MANUALS CAN BE OBTAINED FROM THIEMAN TAILGATES, INC.

PUMP & CYLINDER ASSEMBLY

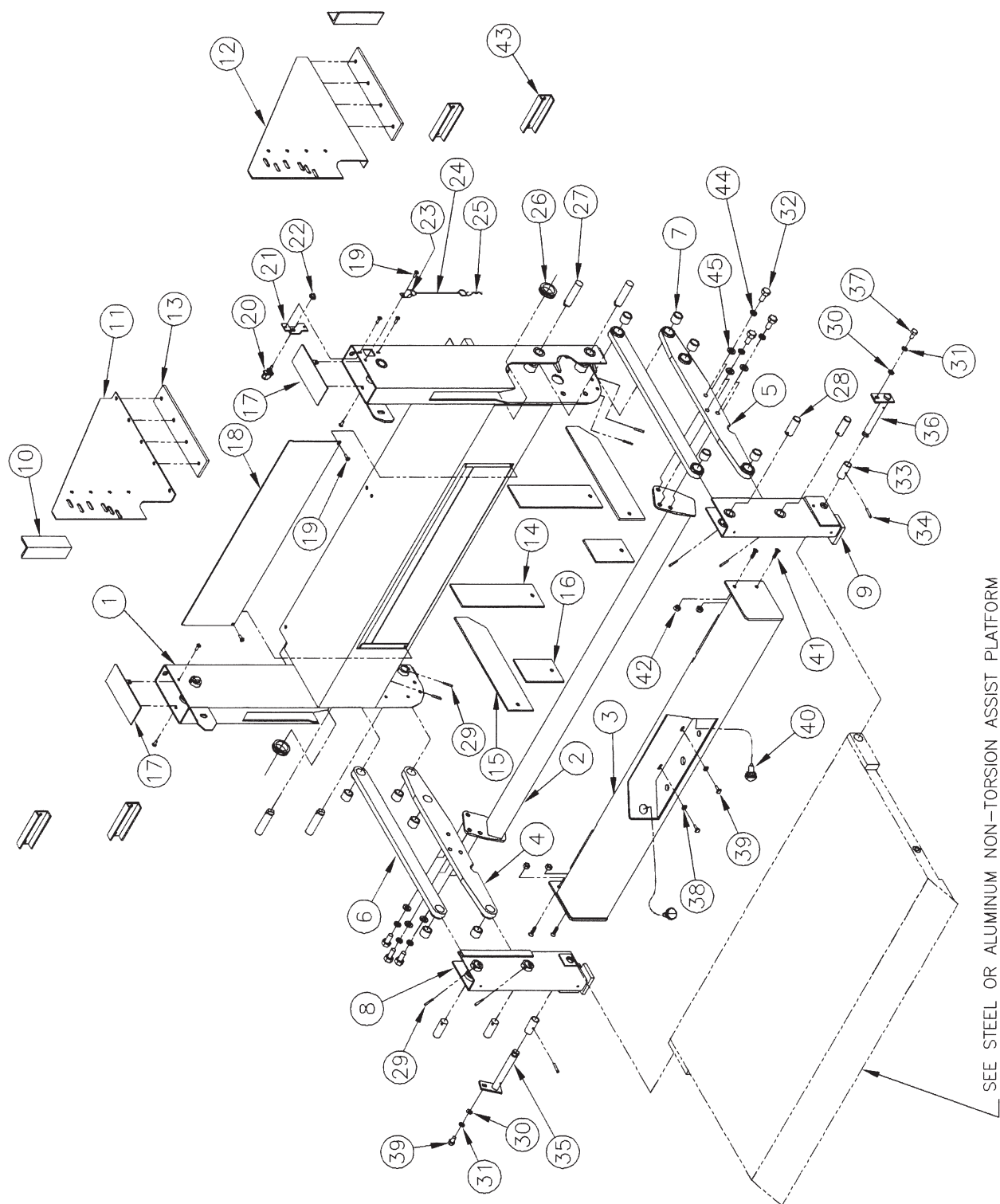
Item	Part Number	Description	Qty./Model
1	4400871	Pump Asm-Items 2-5	1
2	4423520	Motor 8111	1
3	4420409	Breather	1
4	4447	Solenoid	1
5	4900250	Tube Tee	1
6	31313	Cylinder Asm	2
7	4900080	Swivel Tee	1
8	4350	Battery Lug	1
9	4300030	Battery Cable #2 x 25'	1
10	4960000	Hose 48.00	2
11	4952021	Tube 60.00	2
12	4900240	Tube Elbow	2
13	5701260	Cable Retainer	12
14	4900540	Restrictor Elbow	2
15	5702371	Spring Pin	4
16	5061	Pin	2
17	5504-001	Bushing	4
18	5781008	Retaining Ring	2
19	5059	Pin	2
20	8180122	Screw .38 x 1	2
21	8106-010	Internal Tooth Lockwasher .38	2
22	4318-001	Battery Cable #2 x 2'	1
23	31297	Clevis Weld	2
24	8108-005	Screw .38 x .75	2
25	4220240	Nylon Insert	2
26	4445	Valve Asm	1
27	4452	Valve Coil	1
28	4319-002	Heat Shrink	1
29	4301770	Circuit Breaker	1

HYDRAULIC COMPONENTS AND POWER UNIT TT-15



TT15 - UNDERCARRIAGE FOR PLATFORMS WITH NO TORSION ASSIST

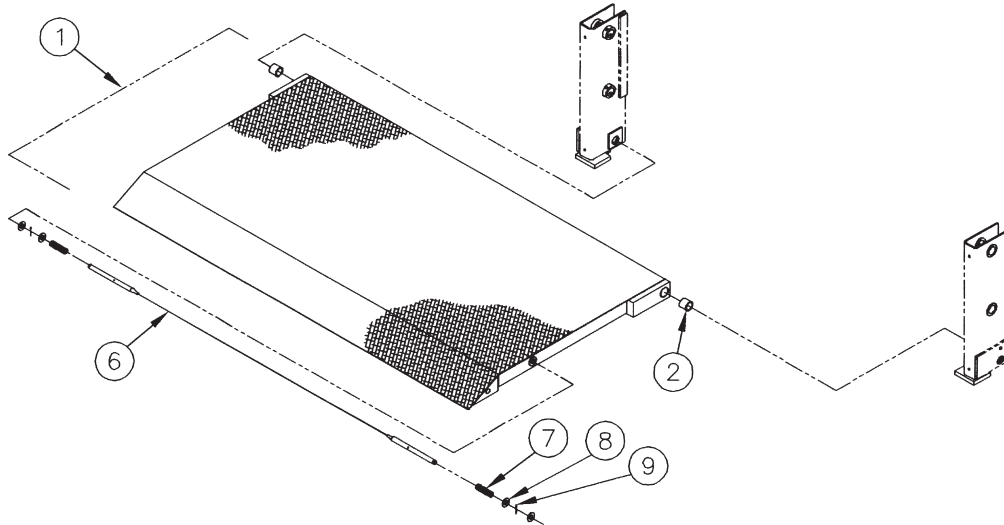
Item	Part Number	Description	Platform Width		
			53	56	60
1	31306-001	Frame Weld-For All Other Platforms	1		
1	31306-002	Frame Weld-For All Other Platforms		1	
1	31306-003	Frame Weld-For All Other Platforms			1
1	31306-004	Frame Weld-2PC. 26" Deep Steel Platform Only	1		
1	31306-005	Frame Weld-2PC. 26" Deep Steel Platform Only		1	
1	31306-006	Frame Weld-2PC. 26" Deep Steel Platform Only			1
2	31354-001	Brace Weld	1		
2	31354-002	Brace Weld		1	
2	31354-003	Brace Weld			1
3	31307-001	Bumper Weld	1		
3	31307-002	Bumper Weld		1	
3	31307-003	Bumper Weld			1
4	31356-001	Lift Arm Asm.-LH, Incl. Item 7	1	1	1
5	31356-002	Lift Arm Asm.-RH, Incl. Item 7	1	1	1
6	31302	Idler Arm Asm., Incl. Item 7	2	2	2
7	5504-001	Bushing - Lift Arms and Idler Arms	10	10	10
8	31301-002	Pivot Support Weld LH	1	1	1
9	31300-002	Pivot Support Weld RH	1	1	1
10	2002-014	Mounting Angle	2	2	2
11	27091-001	Post Support - LH	1	1	1
12	27091-002	Post Support - RH	1	1	1
13	23048	Backer Plate	2	2	2
14	23049-002	Frame Brace - Vertical	2	2	2
15	23049-003	Frame Brace - Horizontal	2	2	2
16	23049-001	Bumper Brace	2	2	2
17	31298	Post Cover	2	2	2
18	27090	Power Unit Cover	1	1	1
19	8449646	Screw .25 x .62	8	8	8
20	4301550	Toggle Switch	1	1	1
21	27086	Switch Bracket	1	1	1
22	4301750	Toggle Seal	1	1	1
23	5702230	Cable Retainer	1	1	1
24	3801008	Latch Cable	1	1	1
25	5700022	Hairpin	1	1	1
26	5701200	Grommet	2	2	2
27	5059	Pin - Arms to Frame Weld	4	4	4
28	5060	Pin - Arms to Pivot Support Weld	4	4	4
29	5702371	Spring Pin .25 x 1.50	8	8	8
30	8120388	Flatwasher .38	2	2	2
31	8120382	Lockwasher .38	2	2	2
32	8100-010	Screw .50 x 1.25	6	6	6
33	3048	Pivot Tube	2	2	2
34	5708-004	Spring Pin	2	2	2
35	31281	Pin Weld LH - Pivot Support Weld to Platform	1	1	1
36	31282	Pin Weld RH - Pivot Support Weld to Platform	1	1	1
37	8180120	Screw .38 x .75	2	2	2
38	5702270	Plastic Square Nut	2	2	2
39	5702280	Screw	2	2	2
40	4300550	License Plate Light	2	2	2
41	8104-010	Screw - .31 x 1.00	4	4	4
42	9413447	Locknut .31	4	4	4
43	3013020	Mounting Tube	4		
44	8120384	Lockwasher .50	6	6	6
45	8120396	Flatwasher .50	6	6	6



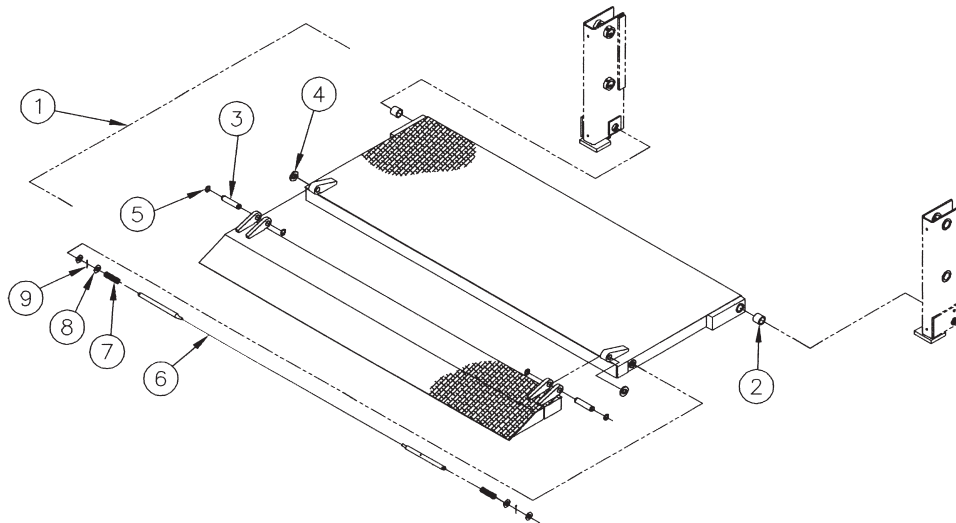
STEEL DECKPLATE PLATFORMS WITH NO TORSION ASSIST

Item	Part Number	Description	Platform Width		
			53	56	60
1	3435-001	Platform Weld - 1PC. 26" Deep, Incl. Item 2	1		
1	3435-002	Platform Weld - 1PC. 26" Deep, Incl. Item 2		1	
1	3435-003	Platform Weld - 1PC. 26" Deep, Incl. Item 2			1
1	3440-004	Platform Weld - 2PC. 26" Deep, Incl. Items 2,3,4,5	1		
1	3440-005	Platform Weld - 2PC. 26" Deep, Incl. Items 2,3,4,5		1	
1	3440-006	Platform Weld - 2PC. 26" Deep, Incl. Items 2,3,4,5			1
2	5504-011	Bushing - Platforms	2	2	2
3	5056	Hinge Pin	2	2	2
4	8107-011	Flatwasher .62	2	2	2
5	5781017	Retaining Ring	4	4	4
6	31357-001	Locking Cable Asm.	1		
6	31357-002	Locking Cable Asm.		1	
6	31357-003	Locking Cable Asm.			1
7	5101160	Spring	2	2	2
8	8120396	Flatwasher .50	4	4	4
9	8121222	Cotter Pin	2	2	2

ONE PIECE 26.00 DEEP" STEEL DECKPLATE PLATFORM

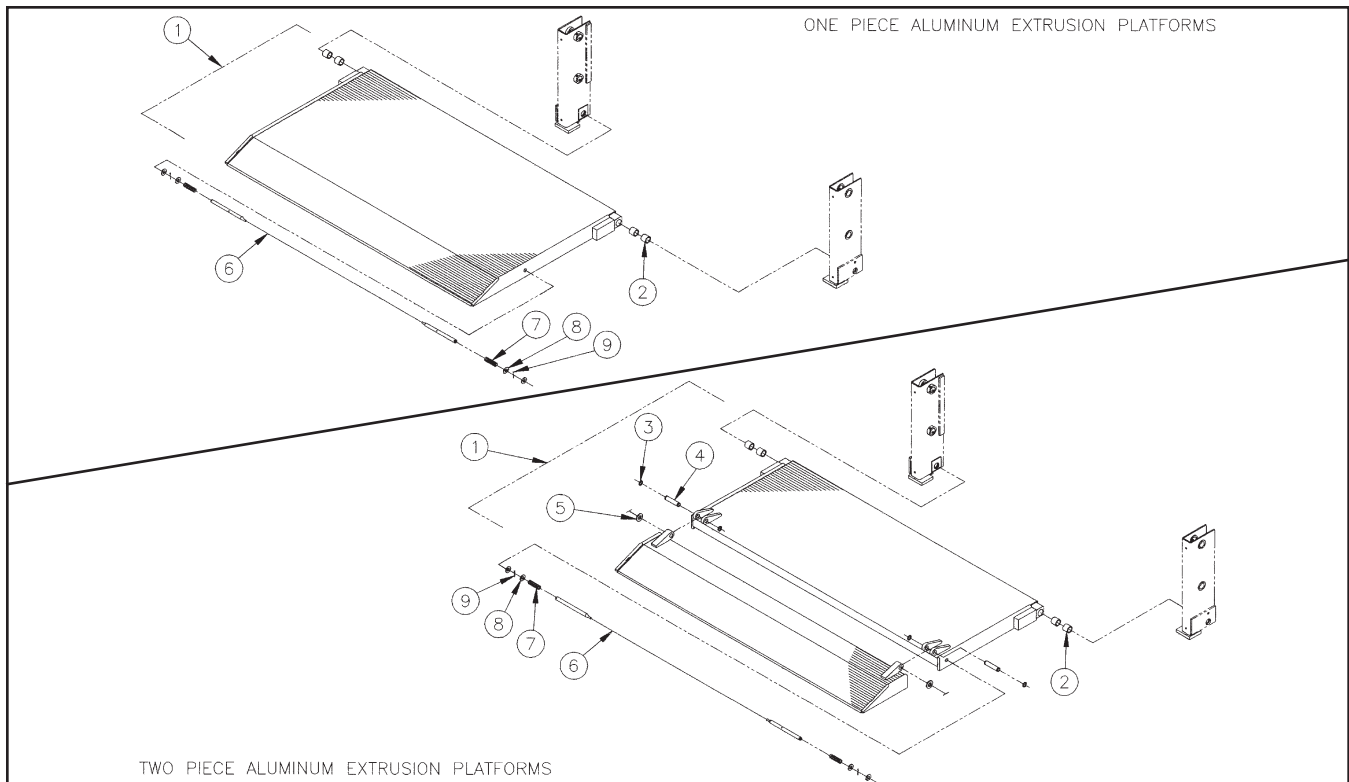


TWO PIECE 26.00 DEEP" STEEL DECKPLATE PLATFORM



ALUMINUM EXTRUSION PLATFORMS WITH NO TORSION ASSIST

Item	Part Number	Description	Platform Width		
			53	56	60
1	3430-004	Platform Weld - 1PC. 26" Deep, Incl. Item 2	1		
1	3430-005	Platform Weld - 1PC. 26" Deep, Incl. Item 2		1	
1	3430-006	Platform Weld - 1PC. 26" Deep, Incl. Item 2			1
1	3430-001	Platform Weld - 1PC. 32" Deep, Incl. Item 2	1		
1	3430-002	Platform Weld - 1PC. 32" Deep, Incl. Item 2		1	
1	3430-003	Platform Weld - 1PC. 32" Deep, Incl. Item 2			1
1	3429-004	Platform Weld - 2PC. 26" Deep, Incl. Items 2,3,4,5	1		
1	3429-005	Platform Weld - 2PC. 26" Deep, Incl. Items 2,3,4,5		1	
1	3429-006	Platform Weld - 2PC. 26" Deep, Incl. Items 2,3,4,5			1
1	3429-010	Platform Weld - 2PC. 32" Deep, Incl. Items 2,3,4,5	1		
1	3429-011	Platform Weld - 2PC. 32" Deep, Incl. Items 2,3,4,5		1	
1	3429-012	Platform Weld - 2PC. 32" Deep, Incl. Items 2,3,4,5			1
2	5504-011	Bushing - Platforms	4	4	4
3	5781017	Retaining Ring	4	4	4
4	5056	Hinge Pin	2	2	2
5	8107-011	Flatwasher .62	2	2	2
6	31357-001	Locking Cable Asm.	1		
6	31357-002	Locking Cable Asm.		1	
6	31357-003	Locking Cable Asm.			1
7	5101160	Spring	2	2	2
8	8120396	Flatwasher .50	4	4	4
9	8121222	Cotter Pin	2	2	2

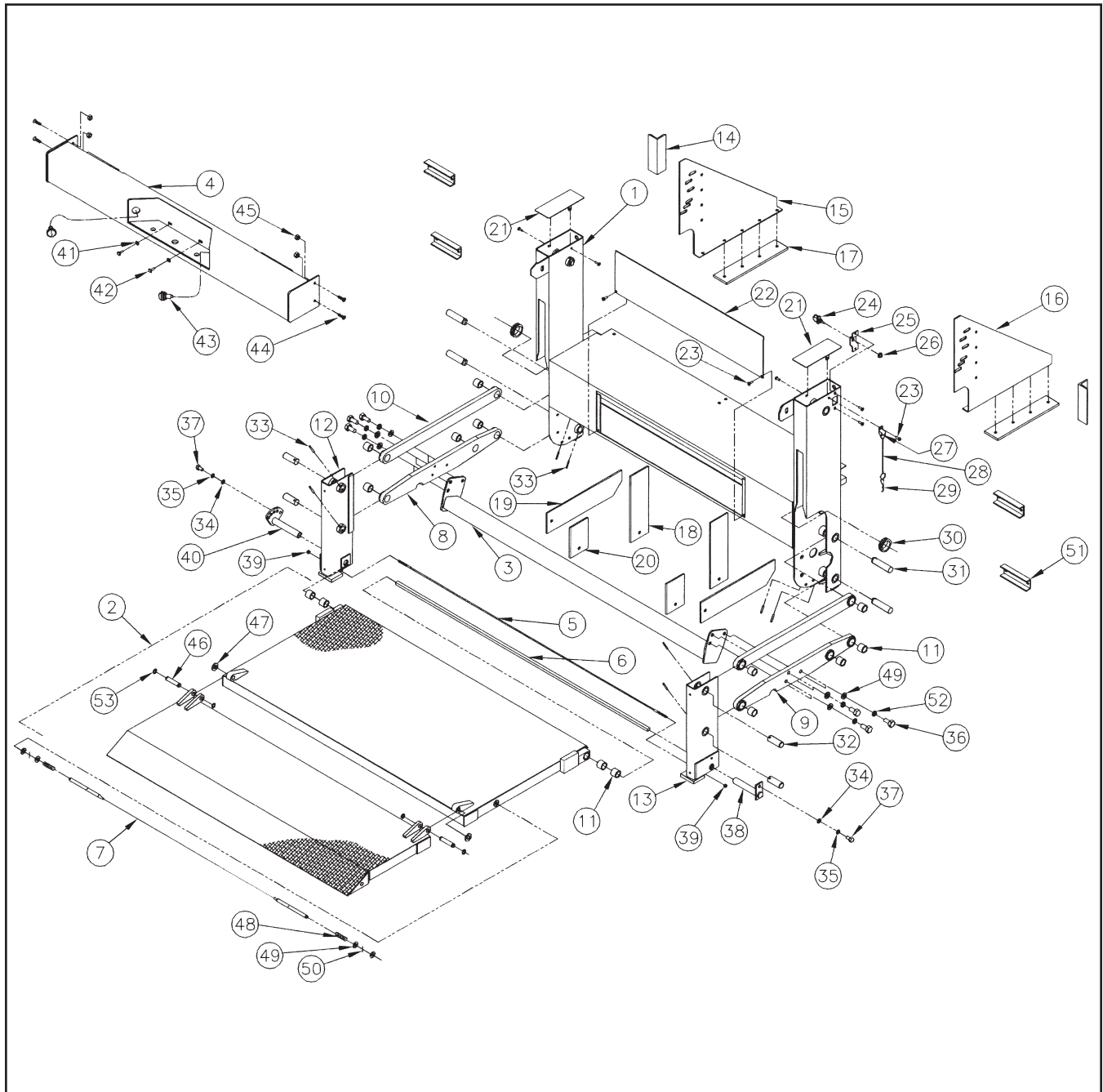


TT15 - STEEL 42.00" DEEP PLATFORMS WITH TORSION ASSIST

Item	Part Number	Description	Platform Width		
			53	56	60
1	31306-001	Frame Weld	1		
1	31306-002	Frame Weld		1	
1	31306-003	Frame Weld			1
2	3441-001	Platform Weld - 2PC. 42" Deep, Incl. Items 11,46,47	1		
2	3441-002	Platform Weld - 2PC. 42" Deep, Incl. Items 11,46,47		1	
2	3441-003	Platform Weld - 2PC. 42" Deep, Incl. Items 11,46,47			1
3	31354-001	Brace Weld	1		
3	31354-002	Brace Weld		1	
3	31354-003	Brace Weld			1
4	31307-001	Bumper Weld	1		
4	31307-002	Bumper Weld		1	
4	31307-003	Bumper Weld			1
5	3801-001	Support Cable	1		
5	3801-002	Support Cable		1	
5	3801-003	Support Cable			1
6	5101-009	Torsion Bar	1		
6	5101-010	Torsion Bar		1	
6	5101-011	Torsion Bar			1
7	31357-001	Locking Cable	1		
7	31357-002	Locking Cable		1	
7	31357-003	Locking Cable			1
8	31356-001	Lift Arm Asm. - LH, Incl. Item 11	1	1	1
9	31356-002	Lift Arm Asm. - RH, Incl. Item 11	1	1	1
10	31302	Idler Arm Asm., Incl. Item 11	2	2	2
11	5504-001	Bushing - Lift Arms, Idler Arms, and Platform	14	14	14
12	31301-001	Pivot Support Weld LH	1	1	1
13	31300-001	Pivot Support Weld RH	1	1	1
14	2002-014	Mounting Angle	2	2	2
15	27091-001	Post Support-LH	1	1	1
16	27091-002	Post Support-RH	1	1	1
17	23048	Backer Plate	2	2	2
18	23049-002	Frame Brace - Vertical	2	2	2
19	23049-003	Frame Brace - Horizontal	2	2	2
20	23049-001	Bumper Brace	2	2	2
21	31298	Post Cover	2	2	2
22	27090	Power Unit Cover	1	1	1
23	8449646	Screw .25 x .62	8	8	8
24	4301550	Toggle Switch	1	1	1
25	27086	Switch Bracket	1	1	1
26	4301750	Toggle Seal	1	1	1
27	5702230	Cable Retainer	1	1	1
28	3801008	Latch Cable	1	1	1
29	5700022	Hairpin	1	1	1
30	5701200	Grommet	2	2	2
31	5059	Pin - Arms to Frame Weld	4	4	4
32	5060	Pin - Arms to Pivot Support Weld	4	4	4
33	5702371	Spring Pin .25 x 1.50	8	8	8
34	8120388	Flatwasher .38	2	2	2
35	8120382	Lockwasher .38	2	2	2
36	8100-010	Screw .50 x 1.25	6	6	6
37	8180120	Screw .38 x .75	2	2	2
38	31283	Pin Weld RH Pivot Support Weld to Platform	1	1	1
39	8103-022	Locknut .25	2	2	2
40	31003	Adjustment Bracket - LH Pivot Support Weld to Platform	1	1	1
41	5702270	Plastic Square Nut	2	2	2
42	5702280	Screw	2	2	2

TT15 - STEEL 42.00" DEEP PLATFORMS WITH TORSION ASSIST - CONTINUED

Item	Part Number	Description	Platform Width		
			53	56	60
43	4300550	License Plate Light	2	2	2
44	8104-010	Screw - .31 x 1.00	4	4	4
45	9413447	Locknut .31	4	4	4
46	5056	Hinge Pin	2	2	2
47	8107-011	Flatwasher .62	2	2	2
48	5101160	Spring	2	2	2
49	8120396	Flatwasher .50	10	10	10
50	8121222	Cotter Pin	2	2	2
51	3013020	Mounting Tube	4		
52	8120384	Lockwasher .50	6	6	6
53	5781017	Retaining Ring	4	4	4

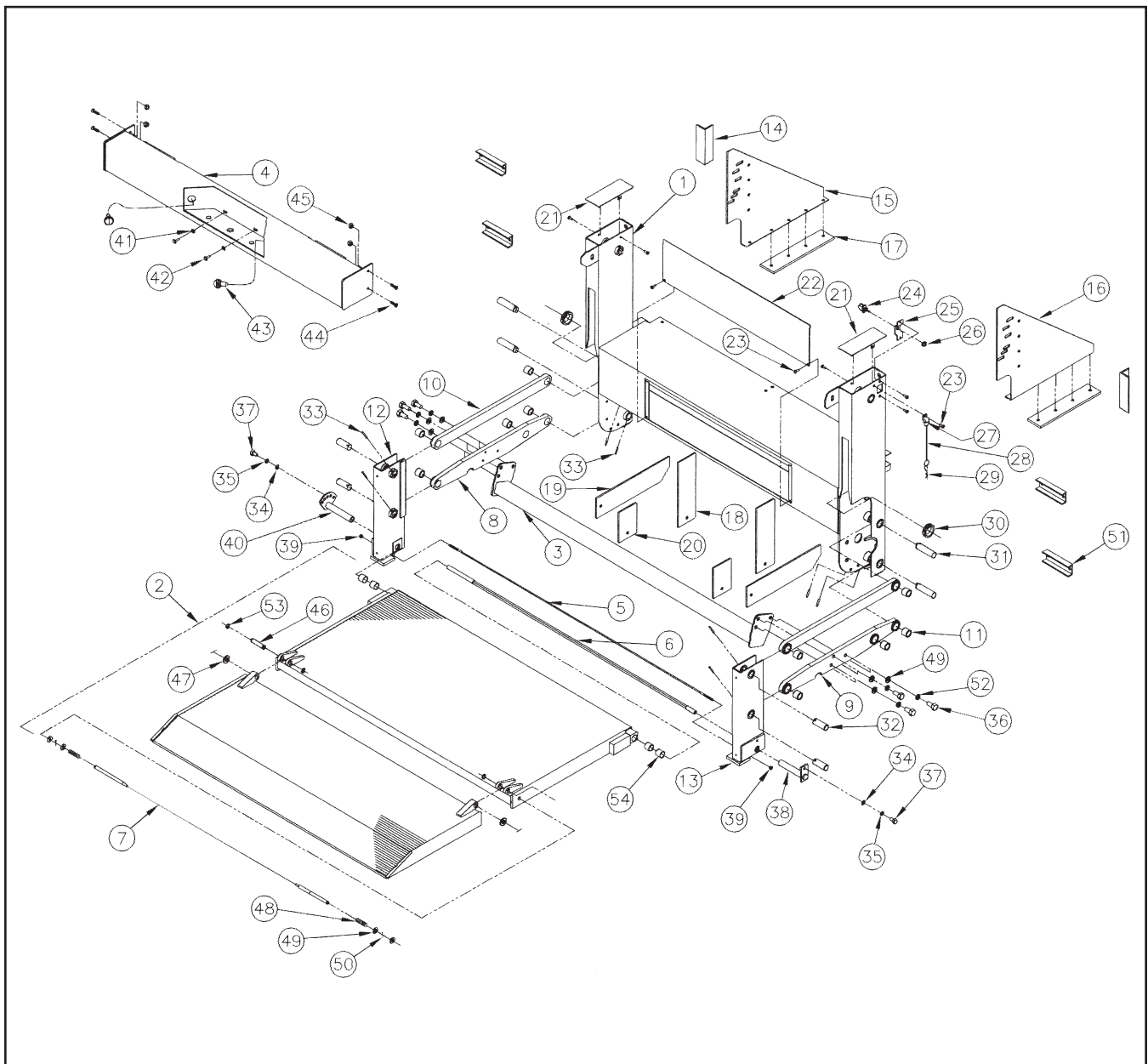


TT15 - ALUMINUM 44.00" DEEP PLATFORMS WITH TORSION ASSIST

Item	Part Number	Description	Platform Width		
			53	56	60
1	31306-001	Frame Weld	1		
1	31306-002	Frame Weld		1	
1	31306-003	Frame Weld			1
2	3443-004	Platform Weld - 2PC. 44" Deep, Incl. Items 54,46,47	1		
2	3443-005	Platform Weld - 2PC. 44" Deep, Incl. Items 54,46,47		1	
2	3443-006	Platform Weld - 2PC. 44" Deep, Incl. Items 54,46,47			1
3	31354-001	Brace Weld	1		
3	31354-002	Brace Weld		1	
3	31354-003	Brace Weld			1
4	31307-001	Bumper Weld	1		
4	31307-002	Bumper Weld		1	
4	31307-003	Bumper Weld			1
5	3801-001	Support Cable	1		
5	3801-002	Support Cable		1	
5	3801-003	Support Cable			1
6	5107-003	Torsion Bar	1		
6	5107-004	Torsion Bar		1	
6	5107-005	Torsion Bar			1
7	31357-001	Locking Cable	1		
7	31357-002	Locking Cable		1	
7	31357-003	Locking Cable			1
8	31356-001	Lift Arm Asm. - LH, Incl. Item 11	1	1	1
9	31356-002	Lift Arm Asm. - RH, Incl. Item 11	1	1	1
10	31302	Idler Arm Asm., Incl. Item 11	2	2	2
11	5504-001	Bushing - Lift Arms, Idler Arms	10	10	10
12	31301-001	Pivot Support Weld LH	1	1	1
13	31300-001	Pivot Support Weld RH	1	1	1
14	2002-014	Mounting Angle	2	2	2
15	27091-001	Post Support-LH	1	1	1
16	27091-002	Post Support-RH	1	1	1
17	23048	Backer Plate	2	2	2
18	23049-002	Frame Brace - Vertical	2	2	2
19	23049-003	Frame Brace - Horizontal	2	2	2
20	23049-001	Bumper Brace	2	2	2
21	31298	Post Cover	2	2	2
22	27090	Power Unit Cover	1	1	1
23	8449646	Screw .25 x .62	8	8	8
24	4301550	Toggle Switch	1	1	1
25	27086	Switch Bracket	1	1	1
26	4301750	Toggle Seal	1	1	1
27	5702230	Cable Retainer	1	1	1
28	3801008	Latch Cable	1	1	1
29	5700022	Hairpin	1	1	1
30	5701200	Grommet	2	2	2
31	5059	Pin - Arms to Frame Weld	4	4	4
32	5060	Pin - Arms to Pivot Support Weld	4	4	4
33	5702371	Spring Pin .25 x 1.50	8	8	8
34	8120388	Flatwasher .38	2	2	2
35	8120382	Lockwasher .38	2	2	2
36	8100-010	Screw .50 x 1.25	6	6	6
37	8180120	Screw .38 x .75	2	2	2
38	31283	Pin Weld RH Pivot Support Weld to Platform	1	1	1
39	8103-022	Locknut .25	2	2	2
40	31003	Adjustment Bracket - LH Pivot Support Weld to Platform	1	1	1
41	5702270	Plastic Square Nut	2	2	2
42	5702280	Screw	2	2	2

TT15 - ALUMINUM 44.00" DEEP PLATFORMS WITH TORSION ASSIST - CONTINUED

Item	Part Number	Description	Platform Width		
			53	56	60
43	4300550	License Plate Light	2	2	2
44	8104-010	Screw - .31 x 1.00	4	4	4
45	9413447	Locknut .31	4	4	4
46	5056	Hinge Pin	2	2	2
47	8107-011	Flatwasher .62	2	2	2
48	5101160	Spring	2	2	2
49	8120396	Flatwasher .50	10	10	10
50	8121222	Cotter Pin	2	2	2
51	3013020	Mounting Tube	4		
52	8120384	Lockwasher .50	6	6	6
53	5781017	Retaining Ring	4	4	4
54	5504-012	Bushing	4	4	4



BUMPER-LIGHT ASSEMBLY - OPTIONAL

Item	Part Number	Description	Platform Width		
			53	56	60
1	3720-001	Bumper Light Asm Kit - includes items 2-13	1		
1	3720-002	Bumper Light Asm Kit - includes items 2-13		1	
1	3720-003	Bumper Light Asm Kit - includes items 2-13			1
2	31307-004	Bumper Weld	1		
2	31307-005	Bumper Weld		1	
2	31307-006	Bumper Weld			1
3	5702270	Plastic Square Nut	2	2	2
4	5702280	Screw	2	2	2
5	4300550	License Plate Light	2	2	2
6	8104-010	Screw - .31 x 1.00	4	4	4
7	9413447	Locknut .31	4	4	4
8	4380	Stop/Turn/Tail Lamp	2	2	2
9	4381	Back-up Lamp	2	2	2
10	4379	Grommet	4	4	4
11	4301380	Wire Harness - 3 Wire	2	2	2
12	4301381	Wire Harness - 2 Wire	2	2	2
13	23049-001	Bumper Brace	2	2	2

