



**DGS-30**

**Dollar General**

Visit us at [www.waltco.com](http://www.waltco.com)

**Owners Manual**

3000 lb. Capacity

---

# IMPORTANT

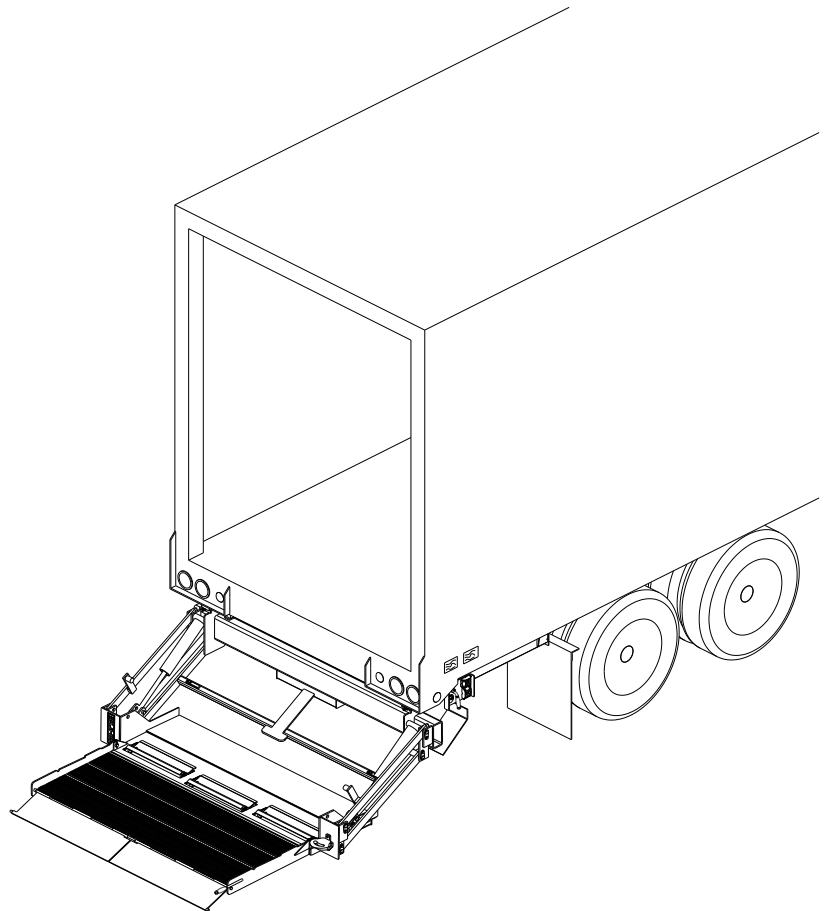
## KEEP IN VEHICLE

---

### ATTENTION

THE SUCCESS OR FAILURE  
OF THIS EQUIPMENT COULD  
VERY WELL DEPEND ON  
THOROUGH AND PROPER  
OPERATION AND  
MAINTENANCE OF THIS  
EQUIPMENT.

READ AND UNDERSTAND  
THE CONTENTS OF THIS  
MANUAL BEFORE  
OPERATING THIS  
EQUIPMENT



12-08

GR02311

---

#### OHIO

285 Northeast Avenue  
Tallmadge, OH 44278  
(330) 633-9191  
FAX – (330) 633-1418

#### CALIFORNIA

227 E. Compton Blvd  
Gardena CA 90248  
(310) 243-6800  
FAX – (310) 538-1136

#### GEORGIA

8960 Highway #5  
Building A  
Douglasville, GA 30134  
(770) 949-5342  
FAX-(770) 949-5344

90814970  
Rev.01

# Table of Contents

	Chapter
INTRODUCTION	
SAFETY INFORMATION .....	1
LIFTGATE TERMINOLOGY .....	2
OPERATION .....	3
INSPECTION .....	4
PLACEMENT OF DECALS .....	5
LUBRICATION INSTRUCTIONS .....	6
SCHEMATICS.....	7
HOW TO ORDER PARTS .....	8

# INTRODUCTION

If anyone observes improper installation, improper operation, or damage, they should immediately contact a qualified person for assistance and correction. We strongly urge anyone that has any questions or doubts as to the installation, condition, use, operation, maintenance or repair of the liftgate to contact us at Waltco where we have qualified personnel that will be happy to assist you. Telephone numbers and addresses of these locations are listed in the Owners Manual and Installation Instructions.

## INSTALLATION

Waltco liftgates should only be installed by those with sufficient basic skills to understand the installation and operation of the liftgate, along with the equipment on which the liftgate is being installed. Waltco's installation instructions are not intended to give rationale for all the instructions that are given; however, it is the intent of these instructions to give the installer both the operations and what we believe to be the most desirable sequence of implementing these operations. These instructions can in no way expand into an area where they will replace a qualified person, or clear thinking and a basic knowledge that must be possessed by the installer.

It has been our experience that a knowledgeable journeyman following these instructions and observing the operation of the liftgate will have a sufficient comprehension of the liftgate to enable this person to troubleshoot and correct all normal problems that may be encountered.

Failure to follow the installation instructions, adjustments and mounting dimensions may result in improper and unsafe operation of the liftgate. Unauthorized alterations of the liftgate can cause an undesirable and dangerous condition.

## OWNERS MANUAL

The Waltco Owners Manual is intended to act as a guide for operation and routine maintenance but is no way intended to encourage usage or repair of the liftgate by those who are not qualified to do so.

The contents of the owners manual include, but are not limited to general operation instructions, routine lubrication, parts lists, and an outline of things that should be checked but may not be obvious to those not technically qualified. This manual assumes the liftgate is properly installed, undamaged and operates correctly. Improper installation, improper operation, or damage should be immediately corrected by a qualified person.

## INSPECTION

As part of the regular inspection of a liftgate and after damage or suspicion of an overload, inspect for wear or structural damage and make necessary repairs or replacements. Check all structural components and their attachment to the liftgate for cracked welds, wear and part deformation. Check cylinder and hose for leaks. Inspections and repairs should be made by a qualified mechanic.

## REPLACEMENT PARTS

Use only Waltco original equipment replacement parts. Components of other liftgate manufacturers may outwardly appear to be the same but are not interchangeable with Waltco products. Waltco components are specifically designed for safety requirements, reliability and compatibility with our products. Refer to your Waltco parts manual when ordering parts. NOTE: When ordering, give model and serial number of liftgate.

## DECALS

It is important that every vehicle that has a WALTCO Liftgate have legible DECALS clearly posted on the vehicle and an OWNER'S MANUAL in the vehicle at all times as a guide for proper operation and maintenance.

Additional DECALS and OWNER'S MANUALS can be obtained from WALTCO TRUCK EQUIPMENT COMPANY.

# Chapter 1 Safety Information

The following safety information must be read before operating Waltco liftgates.

- Read and understand the Owner's Manual and all decals on liftgate before operating liftgate.
- Do not operate liftgate without a thorough knowledge and understanding of the operation of the liftgate.
- Liftgate hazards can result in crushing or falling
- This liftgate is designed for loading and unloading of cargo. If personnel are required to ride liftgate, observe and familiarize yourself with the liftgate operation, decals and manuals. Ensure stable footing at all times
- Do not ride liftgate with unstable loads.
- Keep hands and feet clear of all potential pinch points.
- Do not attempt any repairs unless you are qualified to do so. Care should be taken when work is performed on a disabled liftgate located near moving traffic. When possible the vehicle should be moved away from traffic areas for repair. Precautionary measures should be taken to ensure personal safety including those recommended in Federal Motor Vehicle Safety Standards 571.125.
- **NEVER OVERLOAD LIFTGATE**  
Refer to the Explanation of Specification Tag in the Liftgate Terminology chapter for liftgate capacity rating.
- Never use liftgate if it makes any unusual noise, has unusual vibration, raises or lowers unevenly, or fails to operate smoothly.
- Never use liftgate if it shows any signs of structural damage such as cracked welds, bent or distorted members.
- For liftgates with Runners, never use liftgate if Runners do not travel freely and smoothly.
- All protective covers, guards, and safety devices must be in place and access doors closed before operating liftgate.
- Make certain the Platform area, including the area in which loads may fall, is clear before and at all times during the operation of the liftgate.
- For liftgates with Roller Lifting Chain, the Chain should be replaced every (5) five years or 15,000 cycles, whichever comes first. Replace only with Waltco approved Roller Chain.
- A Lock-Out device or Shut-Off Switch should always be used to prevent unauthorized use of liftgate.
- Never transfer loads which exceed lifting capacity on or over any part of the Platform unless the liftgate is equipped with a special reinforced Platform and Platform Support Bars for use when the Platform is used as loading ramp (dock board). Refer to the "Using Platform as a loading ramp" Chapter in the Operation Instructions of the BZ/RZ series Owner's Manual.
- Platform is always to be properly stored and secured for transit. See the Owner's Manual for details.
- For liftgates equipped with Trailer Hitches, never exceed the rated capacity of the hitch. Do not exceed the vehicle's weight rating. Refer to the vehicle's Owner's Manual.

# Chapter 1 Safety Information

- Take care to retain cargo during transit for liftgate Platforms which function as the tailgate or door of the cargo area. Small objects can fall through the space between the vehicle and the folded Platform.
- Vehicle must comply with all state and federal standards.
- Follow the “Maintenance Guide” chapter in the Owner’s Manual.

## Liftgates with Tilt Function

- Proper use of the Control Switches is of extreme importance.
- Improper use of Tilt Switch could cause load to fall from the Platform or damage the liftgate.
- Platform should be in a generally horizontal position when raising or lowering with a load.
- In any tilt position, the Platform may vary from level while raising or lowering the Platform.

## Liftgates equipped with spring operated Cam Closer

- Replace Cam Release Spring every five (5) years or 15,000 cycles, whichever comes first.

## RGL

- Make certain Platform Brake mechanisms are operating properly.
- The Runners are always to remain powered up against the Upstops Pins when in transit.
- Inspect Cables every three (3) months or 750 cycles, whichever comes first. Cables must be replaced if they show signs of wear, distortion, kinking or if any broken wires are visible
- Replace cables every five (5) years or 10,000 cycles, whichever comes first.

## SIGNAL WORDS

### WARNING

Indicates a potentially hazardous situation, which if not avoided, could result in death or serious injury.  
Black letters on an orange background

### CAUTION

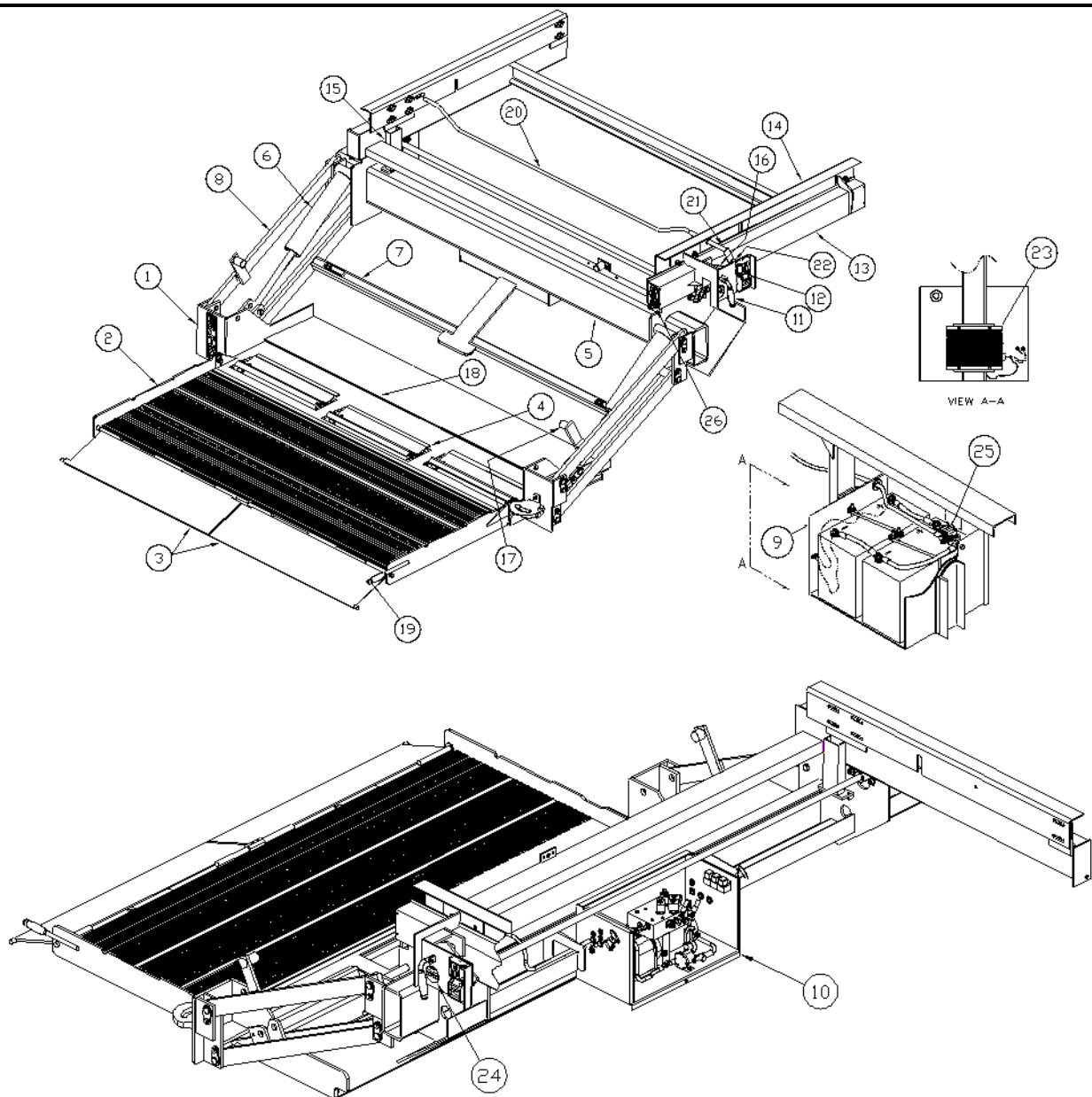
Indicates a potentially hazardous situation, which if not avoided, may result in minor or moderate injury. May also be used to alert against unsafe practices.

Black letters on a yellow background.

 **WARNING** **CAUTION**

# Chapter 2 Liftgate Terminology

- |                   |                                 |                                 |
|-------------------|---------------------------------|---------------------------------|
| 1. Deck           | 11. Transit hook opening handle | 21. Latch Rod Link (D/S or C/S) |
| 2. Deck extension | 12. Control Switches            | 22. Latch Link Connecting Bar   |
| 3. Loading ramp   | 13. Track                       | 23. Charging module             |
| 4. Cart stop      | 14. Mount angles                | 24. Identification tag          |
| 5. Mount tube     | 15. Up-stops                    | 25. 150 Amp Circuit Breaker     |
| 6. Lift cylinder  | 16. Transit latch               | 26. Wear Gauge                  |
| 7. Lift arm       | 17. Transit latch pin           |                                 |
| 8. Parallel arm   | 18. Roll back retention         |                                 |
| 9. Battery box    | 19. Platform Handle             |                                 |
| 10. Pump unit box | 20. Latch Rod Link (Middle)     |                                 |



GR02336 & GR02337

# Chapter 2 Liftgate Terminology

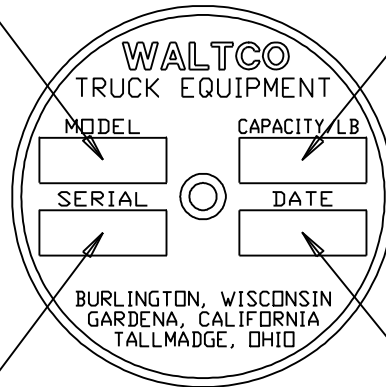
## EXPLANATION OF SPECIFICATION TAG

MODEL NO.	MODEL NAME	DESCRIPTION	CAPACITY
90431	DGS-30	Sliding liftgate DGS-30	3000 LBS.

MODEL NUMBER

RATED CAPACITY

Based on an evenly distributed load on the platform flat surface



SERIAL NUMBER

of Liftgate. To be used when ordering parts or when contacting Waltco for service or warranty.

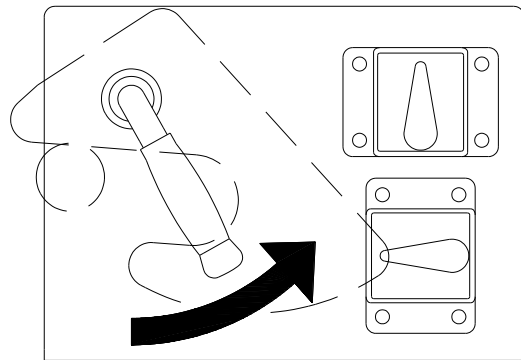
DATE OF MANUFACTURE  
MONTH/YEAR

GR00053

# Chapter 3 Operations Instructions

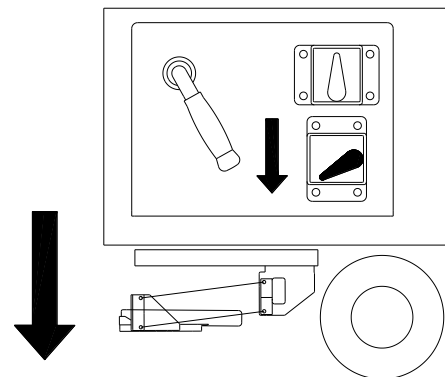
## OPENING PLATFORM

Turn and hold lever to release transit hook.



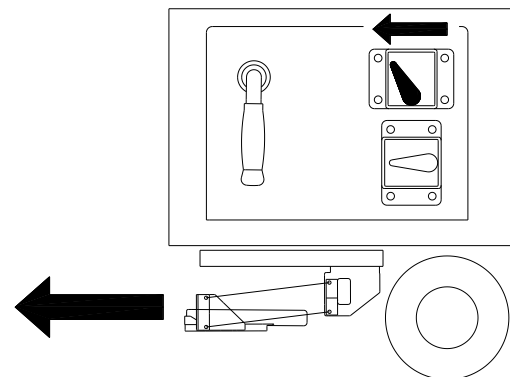
GR01230

Hold transit hook lever in open position.  
Turn and hold lower switch to lower platform from transit position.  
Do not lower platform to ground level, just enough to clear transport stops.



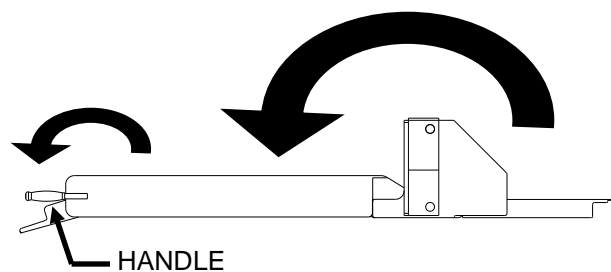
GR01231

Turn and hold open switch to move platform to working position.



GR01232

Lower platform to ground.  
Open platform extension and loading ramps manually.  
**Note!** Use handle to open platform extension.

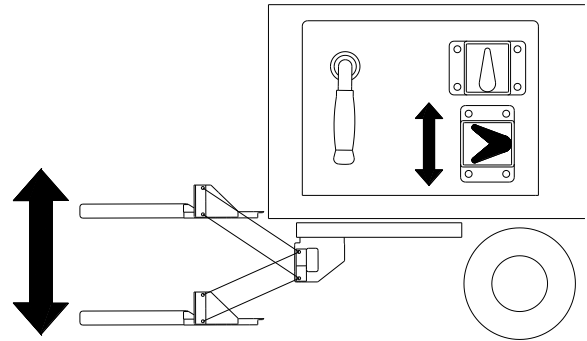


GR01233

# Chapter 3 Operations Instructions

## TO RAISE AND LOWER PLATFORM IN WORKING POSITION

Turn raise switch to raise platform.  
Or  
Turn lower switch to lower platform.

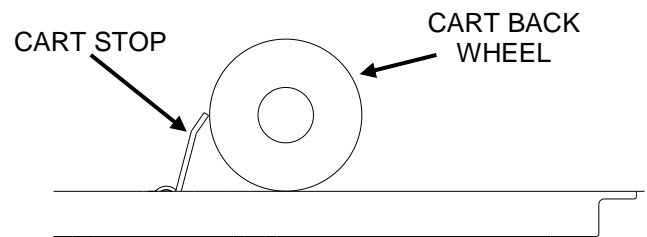


GR01234

## CART STOPS

Always use cart stops to secure carts.

Make sure that cart stop is activated after the first wheel goes over cart stops and cart stop secures back wheel as shown.

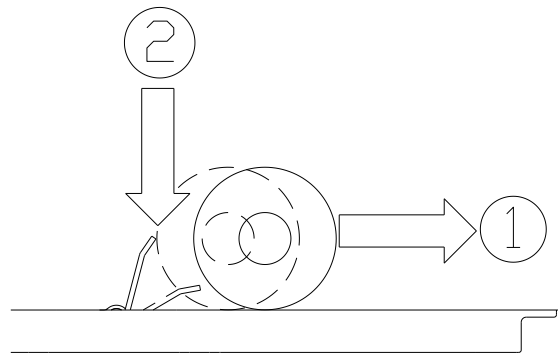


GR01235

To release cart stop:

First pull cart back  
Then push down cart stop with foot.

**CAUTION!** Hold cart when releasing cart stop to prevent cart from rolling off platform.



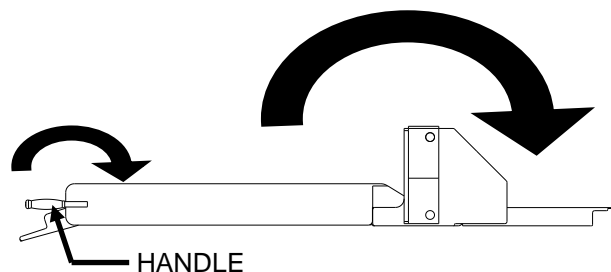
GR01236

## CLOSING PLATFORM

Lower platform to ground.

Close loading ramps manually.  
Close platform extension manually.

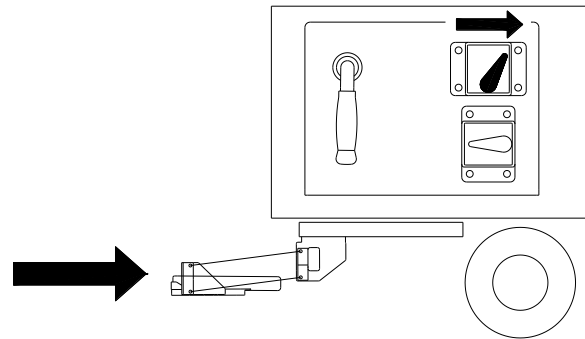
**Note!** Use handle to close platform extension.



GR01233

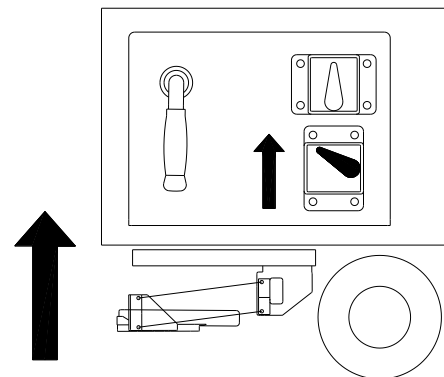
# Chapter 3 Operations Instructions

Turn and hold close switch to move platform under trailer.



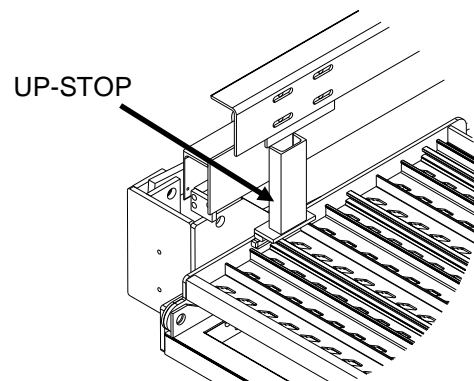
GR01238

Turn and hold raise switch to raise platform to stored position.



GR01239

**IMPORTANT!** Power liftgate up against up-stops.

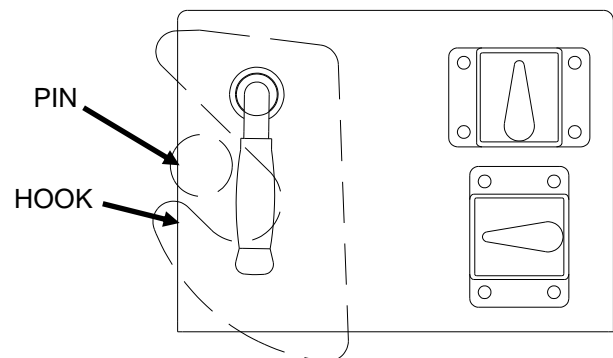


GR01409

## SECURE PLATFORM FOR TRANSIT

Make sure that transport hook has locked parallel arm pin.

**IMPORTANT!** Do not lower pin into hook.



GR01241

# Chapter 4 Inspection

The following inspection and maintenance operations should be performed every 90 days, or at anytime the unit shows signs of abuse, and/or improper or abnormal operation. Adherence to this guide will help insure the maximum in operator safety and satisfaction with your Waltco liftgate through preventive maintenance.

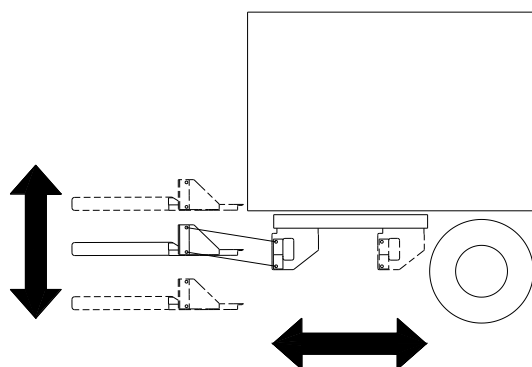
**CAUTION:** Never get under the platform or in the area in which the platform will open, unless the platform is first secured.

Operate the liftgate throughout its entire operational cycles and check for the following:

Apparent damage to the lifting structure, such as bent or distorted members.

Cracked welds, which may have resulted from overloading or abuse.

Check that the liftgate operates freely and smoothly, and that there are no unusual noises or vibrations.



GR01242

Inspect for oil leaks in:

Hydraulic cylinders

Hydraulic hoses. Replace hoses if they show signs of excessive abrasion.

Hydraulic fittings and valves.

Tighten or replace all hydraulic components as may be required to stop oil leakage.

**Inspect all hydraulic components**

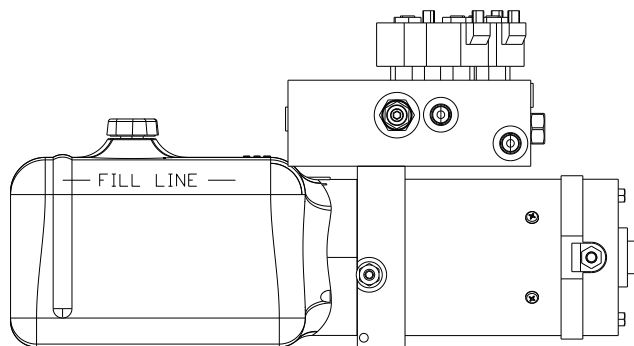
## CHECK OIL LEVEL

Lower platform to the ground.

Oil level should be within  $\frac{1}{2}$ " to fill line (over or above) marked on the side of oil tank.

Fill as may be required

Follow oil recommendations.



GR02353

# Chapter 4 Inspection

## Recommended Fluids

Temperature Range	Acceptable Fluids
-10° to 195° F	Mobil DTE 13M Shell Tellus 32T
-25° to 140° F	Mobil DTE 11M Shell Tellus 15T
-40° to 145° F	Mobil Aero HFA Exxon Unavis HVI 13
-45° to 200° F	Exxon Unavis HVI 26

A good quality SAE 10W motor oil may also be used in temperatures above 32° F.

## Fill reservoir

- Fill with recommended fluid or equivalent.
- Fill the reservoir to within 1/2" from the top.

## IMPORTANT:

**Do not use the following fluids:**

**Brake Fluid**

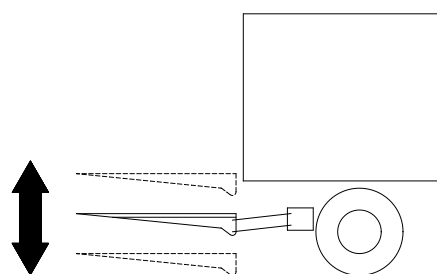
**Power steering fluid**

**Automatic Transmission Fluid (ATF)**

## BLEEDING CYLINDERS

Lift cylinders:

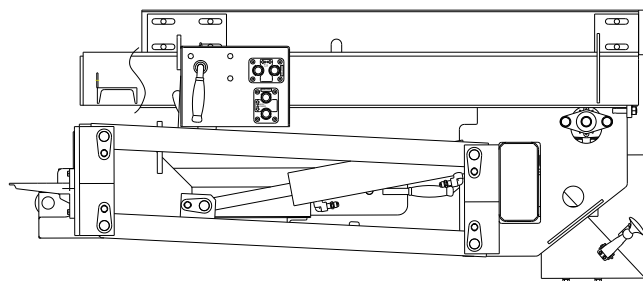
Fully lower platform a few times. You may have to jack up vehicle to fully extend lift cylinders.



GR01073

## SLIDE SYSTEM

If needed wash chains with anti-grease liquid and grease with WD-40 (or similar).



GR02354

# Chapter 5 Placement of Decals

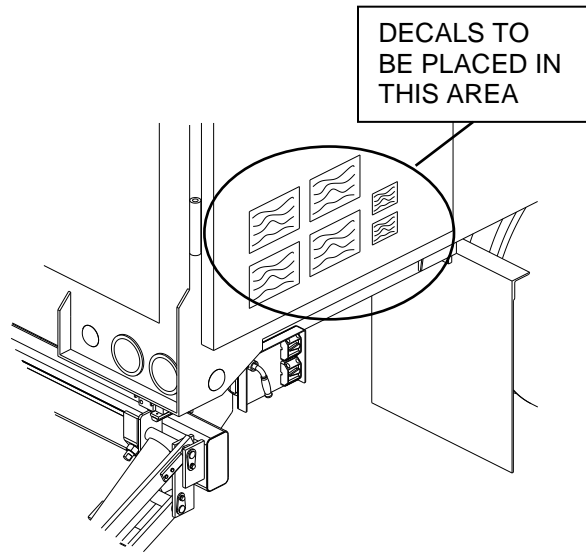
## INSTALLATION OF DECALS

Install all decals listed below. Be certain they are installed in the proper location and are legible.

**NOTE! All decals must be in place and legible or all warranties are void!**

Each of the following six (6) decals are to be positioned in a conspicuous place inside of trailer door.

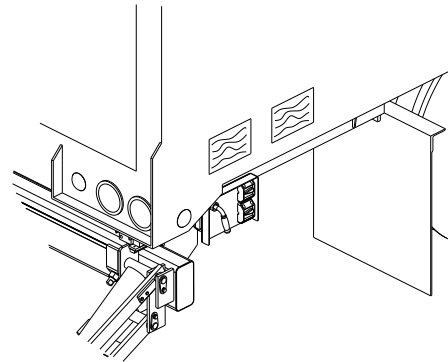
- 80100850 – Safety Instruction Decal (1)
- 80101430 – Operation Decal (1)
- 80100257 – 3000lbs. Capacity Decal (1)
- 75089296 – Stand clear decal (1)
- 80101370 – Hazard decal (1)



GR01245

Following decals are to be positioned outside of trailer in conspicuous place near the control switches as shown.

- 80100850 – Safety Instruction Decal (1)
- 80101370 – Hazard decal (1)

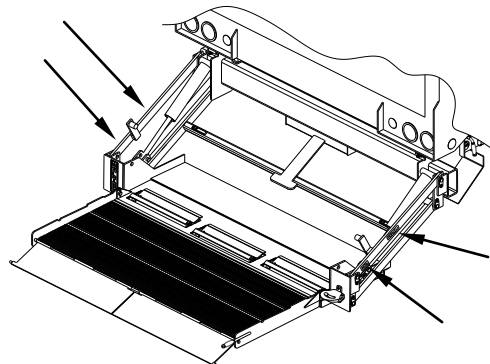


GR01253

## KEEP CLEAR AND CAPACITY DECALS

The following decals are to be placed on the parallel arms.

- 75089296 – Stand clear decals (2)
- 80100257 – 3000lbs. Capacity Decals (2)



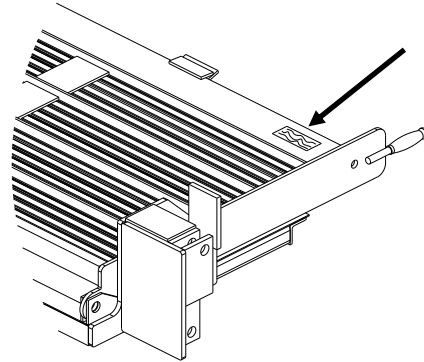
GR02350

# Chapter 5 Placement of Decals

## USE HANDLE DECALS

The following decal is to be placed next to extension opening handle.

75089295 – Decal, use handle (1)

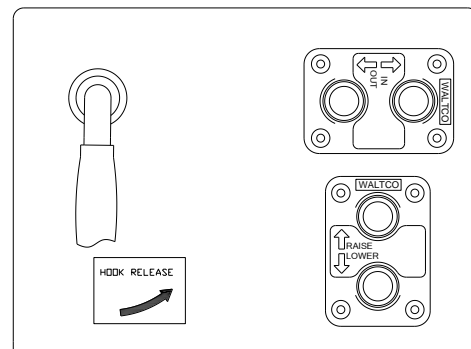


GR01247

## SWITCH BOX DECALS

The following decals are to be placed next to switches and hook release lever.

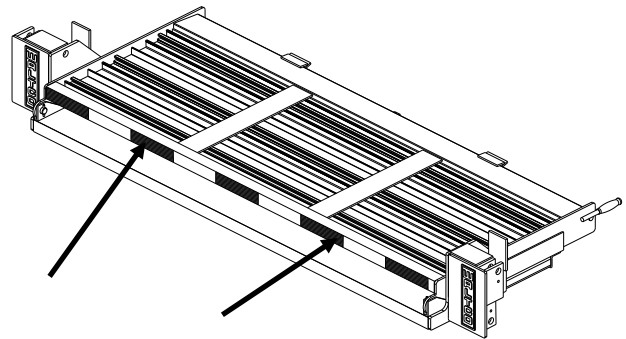
80101432 – Decal, hook release (1)



GR02351

## CONSPICUITY TAPE

Add conspicuity tape (not provided) to deck extension edge as shown.



GR01276

# Chapter 6 Lubrication

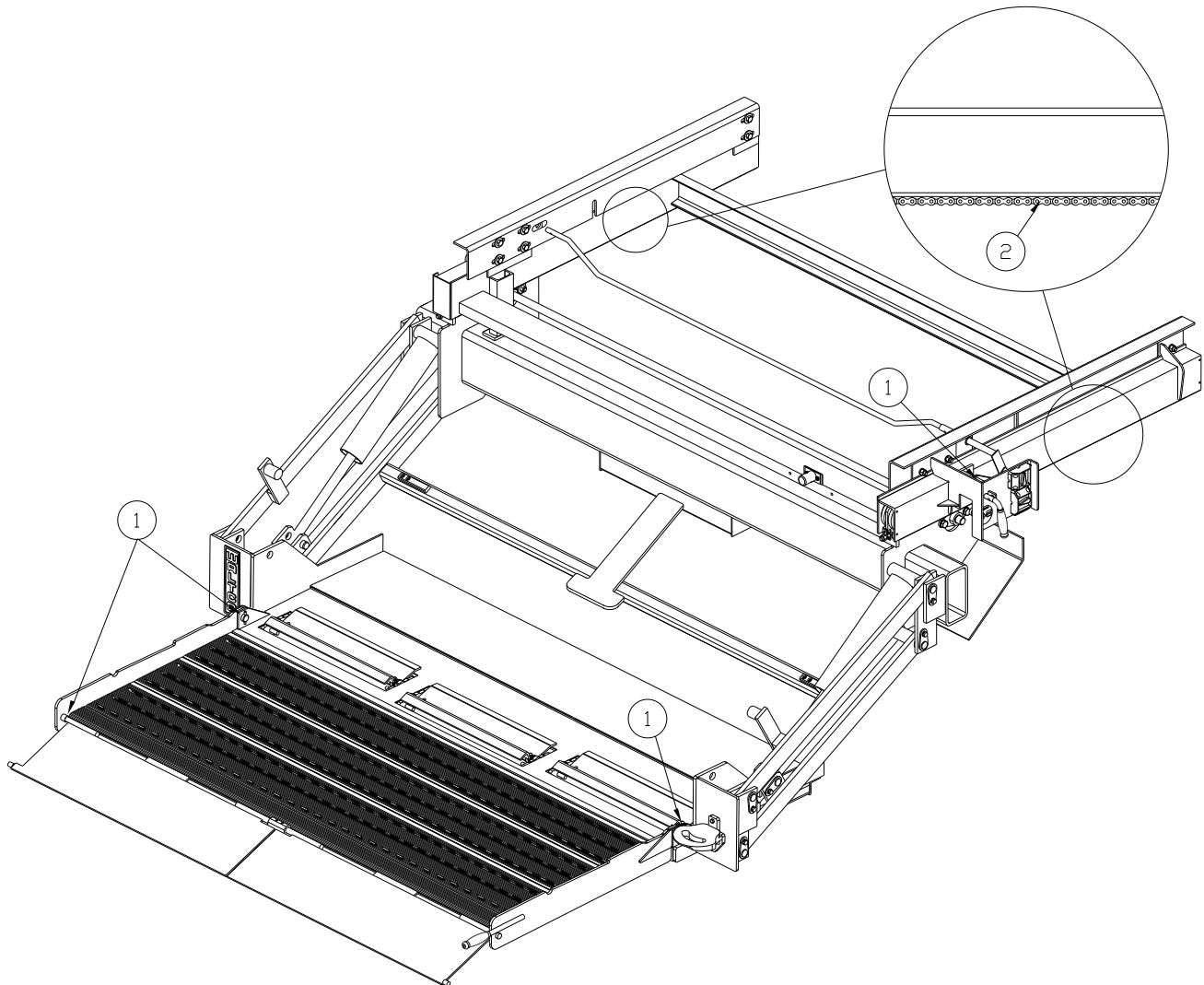
## LUBRICATION INSTRUCTIONS

This liftgate is equipped with greaseless bushings at all major pivot points and does not require any regular lubrication except as outlined below.

The points indicated should be lubricated approximately every three months or as outlined in the lubrication schedule for heavier usage. If not sure of duty cycles, always lubricate more frequently.

1. All areas indicated with a number "1" are to be lubricated with light weight machine oil.
2. Clean track chain with a penetrating or rust preventative spray such as WD-40

Suggested Minimum Lubrication Schedule (In Days)			
Monthly Cycles	Light Duty	Med. Duty	Heavy Duty
250 Or Less	90	60	45
250-350	60	45	28
350-450	45	28	14
More Than 450	Contact Factory for Instructions		



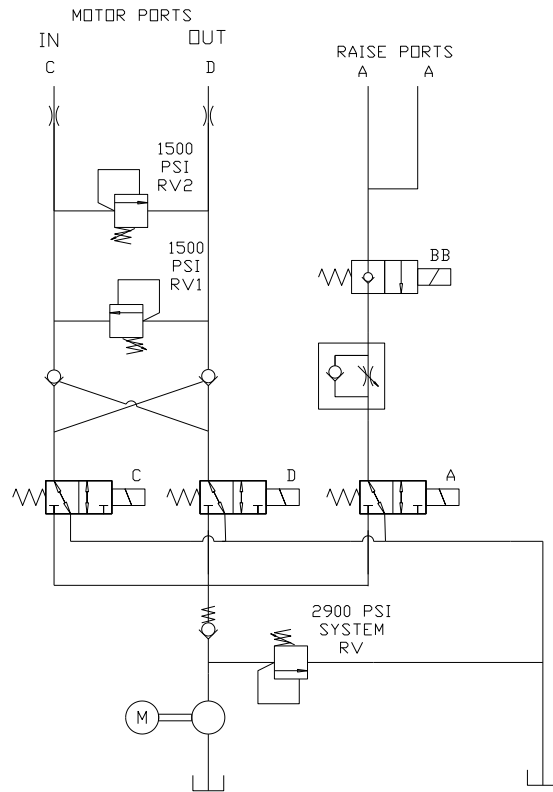
GR02352

# Chapter 7 Schematics

## Schematics Table of Contents

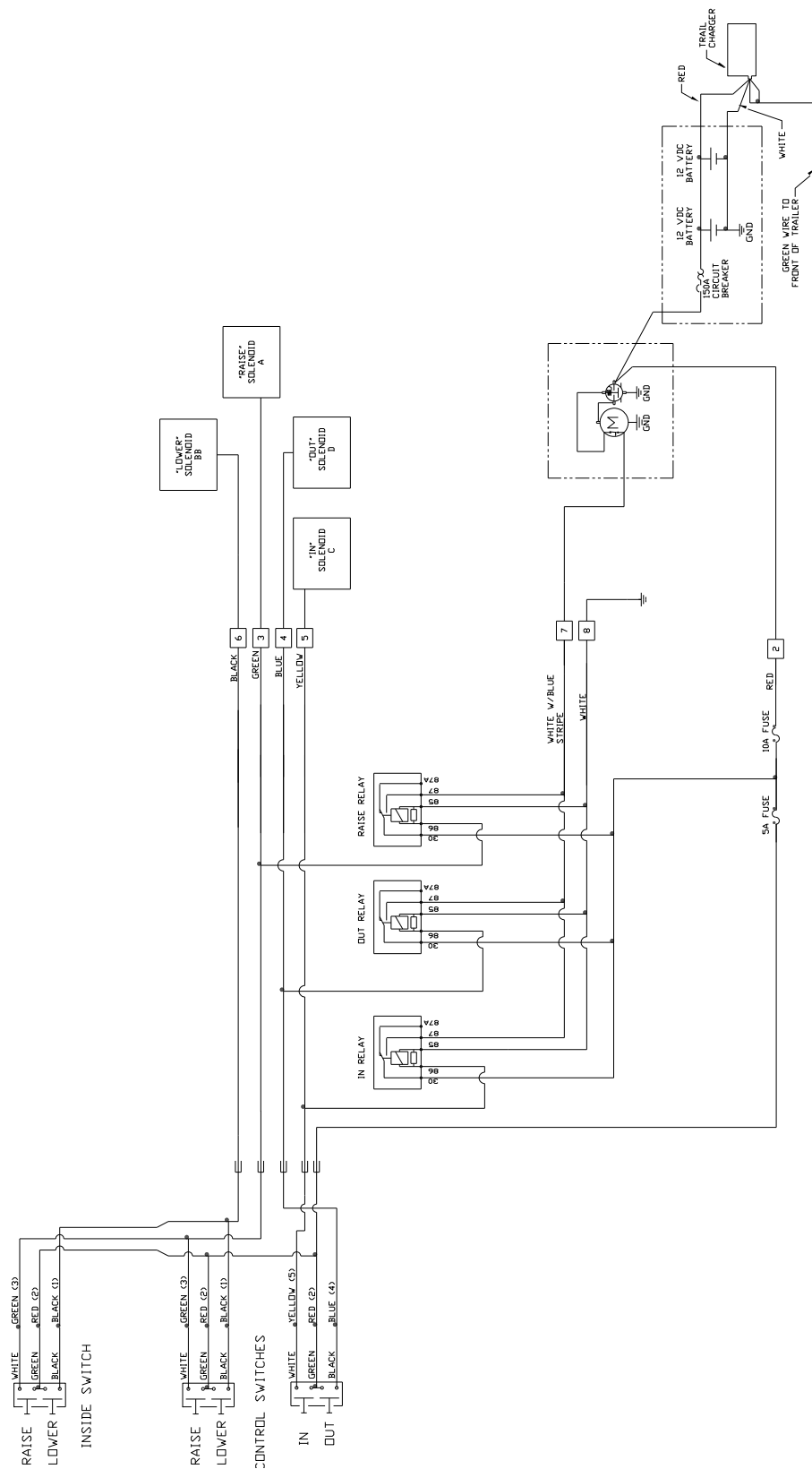
Hydraulic schematic .....	7-2
Wiring diagram .....	7-3
Platform .....	PM - 670A
Track frame .....	PM - 671A
Mount frame .....	PM - 672A
Hydraulic and Electric layout .....	PM - 673A
Pump box .....	PM - 674A

# Chapter 7 PMs & Schematics



GR01249

# Chapter 7 PMs & Schematics



GR02355

# Chapter 7 PMs & Schematics

This page has been left intentionally blank

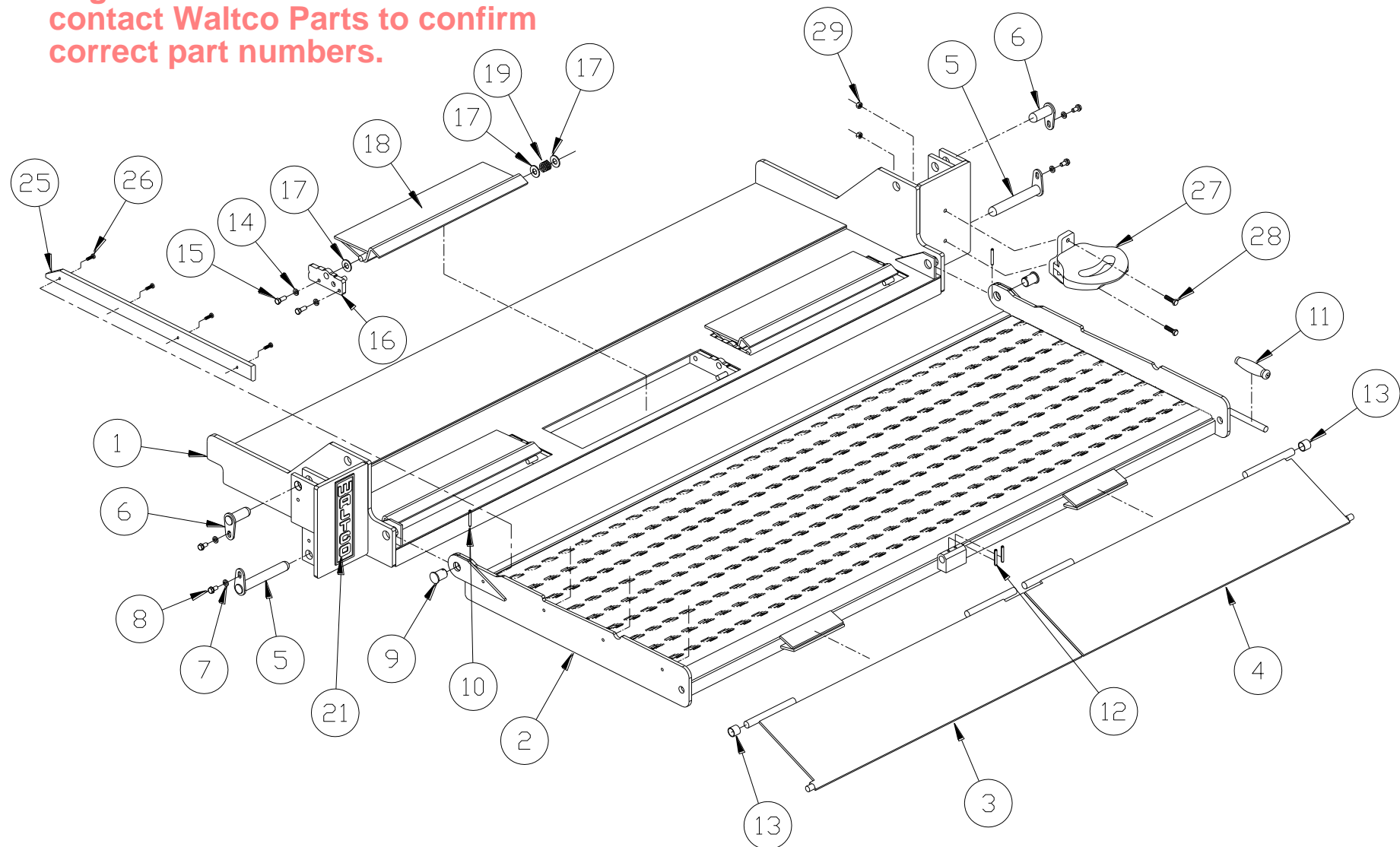
ITEM	PART NUMBER	QTY	DESCRIPTION
1	90509110	1	Deck Assembly
2	90445135	1	Deck Extension Assembly
3	90443145	1	Ramp, driver side
4	90443150	1	Ramp, curb side
5	27371002	2	Pin, 1" dia. x 7" lg.
6	23370800	2	Pin, 1" dia x 2-3/4" lg.
7	75088081	4	Lock washer, 3/8"
8	75086846	4	Hex bolt, 3/8-16 x 3/4"
9	27595120	2	Clevis pin, 1" dia x 2-1/16" lg.
10	75089541	2	Coiled pin, .250" x 1.875"
11	75090178	1	Plastic handle, yellow
12	75089541	2	Spring pin, .25" x 1.875"
13	90445910	2	Tubing, 1" O.D.
14	75088081	6	Lock washer, 3/8"
15	75086056	6	Hex bolt, 3/8-16 x 1"
16	90431186	3	Cart stop side bar, driver side
17	75088064	9	Washer, 5/8"
18	90445170	3	Cart stop
19	90431175	3	Spring
21	75089453	2	Decal
25	90436812	1	Plastic Side Cover, D.S.
26	90185153	4	Screw, 1/4-20 x 3/4"
27	27597410	1	Folding Step
28	75086039	2	Hex Bolt, 5/16-18 x 2"
29	75085177	2	Lock Nut, 5/16-18

**WALTCO**  
**TRUCK EQUIPMENT CO.**  
**DGS-30 (90445)**

REVISED: 5/19/06  
REV. 01

**PM-670A**

# PLATFORM



**WALTCO**  
TRUCK EQUIPMENT CO.  
DGS-30 (90445)

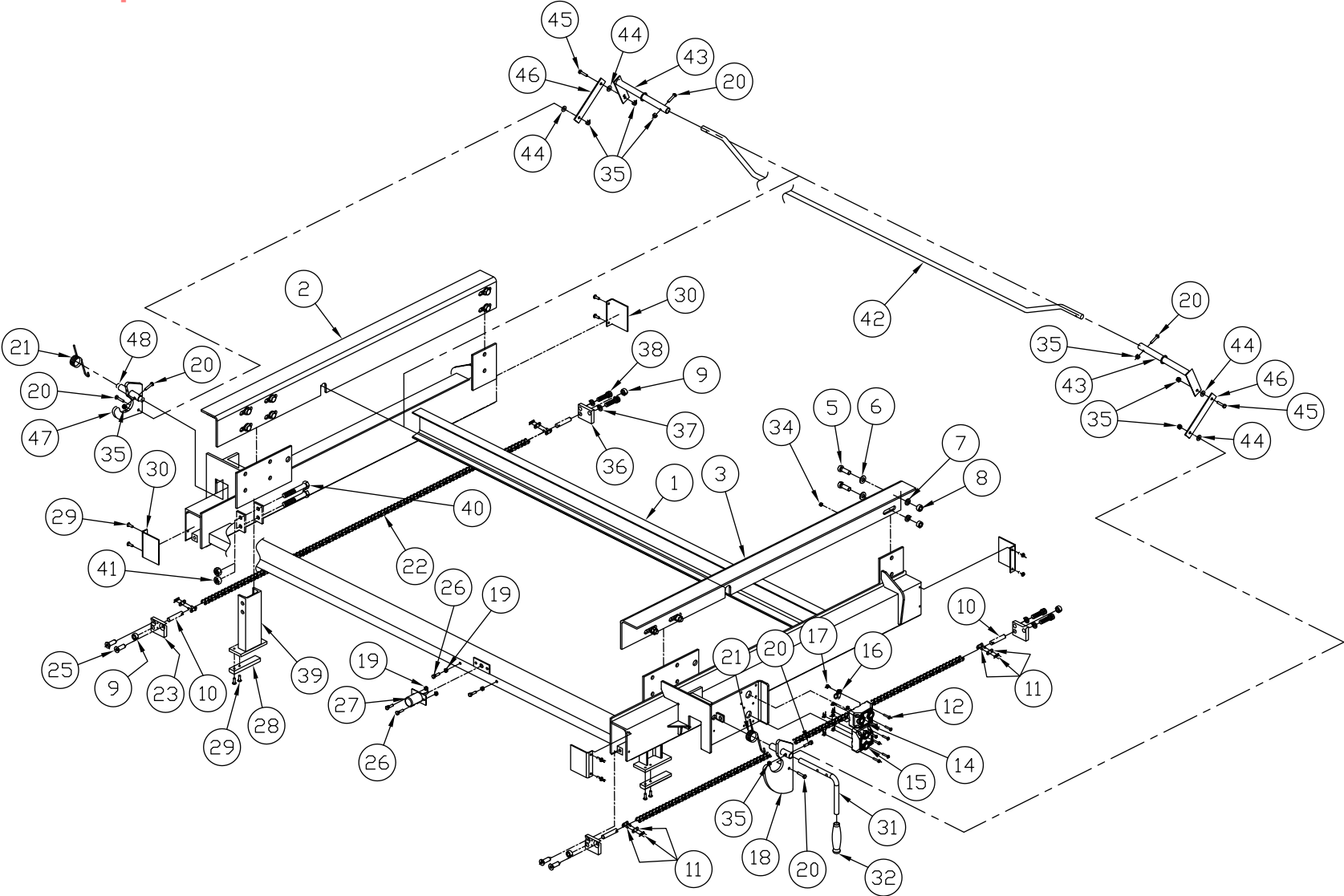
REVISED: 5/19/06  
REV. 01

## PM-670A

ITEM	PART NUMBER	QTY	DESCRIPTION
1	90814600	1	Track Frame Assembly
2	90509671-2	1	Mounting angle, driver side
3	90509417	1	Mounting angle, curb side
5	75086108	12	Hex bolt, 1/2-13 x 1.5, GR 5.
6	75088056	12	Washer, 1/2"
7	75088083	12	Lock washer, 1/2"
8	75085008	12	Nut, 1/2"-13
9	75085162	4	Lock nut, 1/2"-13
10	27569110	4	Chain tensioner
11	75081117	4	Connecting link
12	75086732	8	Screw, #10-32 x 1"
14	10099328	1	Switch, In / Out, 10'
15	10099322	1	Switch, Raise / Lower, 10'
16	75083045	1	Hose clamp, 3/8"
17	75085000	8	Nut, # 10-32
18	27567200	1	Transport hook
19	75085001	4	Nut, 1/4-20"
20	75086212	6	Hex bolt, 1/4-20 x 1.25"
21	20261600	2	Spring
22	90431488	2	Chain
23	27569140	2	Chain bracket bar
25	75086235	4	Socket head cap screw, 1/2-13 x 1-1/4"
26	75086006	4	Hex bolt, 1/4-20 x 1"
27	75089385	1	License plate light
28	39035700	2	Up-stop Pad (Plastic)
29	75086874	12	Screw, 1/4-20 x 5/8"
30	27569130	4	Cap, rail
31	27567220	1	Handle
32	75090178	1	Plastic handle cover, yellow
34	75085003	1	Hex nut, 5/16-18
35	75085161	8	Lock nut, 1/4"-20
36	27569141	2	Chain bracket bar
37	75088260	4	Lock Washer, 1/2"
38	75087580	4	S.H.C.S., 1/2-13 x 1.25 Lg.

ITEM	PART NUMBER	QTY	DESCRIPTION
39	27561105	2	Up-stop
40	75086122	4	Hex Bolt 1/2-13 x 4 Lg.
41	75085008	4	Hex Nut 1/2-13
42	27567260	1	Rod, Link Driver's Side Latch
43	27567250	2	Linkage, Main Driver's Side Latch
44	75088051	4	Washer, Flat, 1/4"
45	75086062	2	Hex Bolt, 1/4-20 x 3/4, GR. 5
46	27567261	2	Bar, 1/8 x 1-1/4 x 6-5/8
47	27567205	1	Transit Hook Weldment
48	27567225	1	Pin, Pivot Driver's Side Latch

**IMPORTANT:**  
**TRACK FRAME** Parts shown may not match your liftgate. See **PARTS NAVIGATOR** or contact **Waltco Parts** to confirm correct part numbers.



ITEM	PART NUMBER	QTY	DESCRIPTION
1	90814210	1	Mount frame with pump box
2	27530000	1	Lift arm
3	27551060	1	Parallel arm, driver side
4	27551000	1	Parallel arm, curb side
5	80001108	2	Lift cylinder
7	27593000	1	Lid, pump unit box
8	27595100	2	Pin, 1" dia x 8-15/16" lg.
9	27371002	2	Pin, 1" dia x 7" lg.
10	75086055	6	Hex screw, 3/8-16 x 3/4", GR 5.
11	75088081	6	Lock washer, 3/8"
12	23370300	2	Pin, 1" dia x 3-15/16" lg.
13	39035700	2	Plastic wear plate
14	75086874	4	Screw, 1/4-20 x 5/8"
15	27566530	8	Wheel, with bearing
16	75088069	8	Washer
17	75001009	8	Retaining ring
19	75086234	2	Hex bolt, 1/2-20 x 4-1/2"
20	27569000	1	Hydraulic motor
21	75086740	1	Set screw, 1/4-28 x 1/4"
22	27569100	2	Spacer tube
23	75090179	1	Key, drive axle
24	75088056	8	Washer, 1/2"
25	75085196	4	Lock nut, 1/2-20
26	10010167	1	Bearing
27	27565200	1	Drive axle bearing housing w/bearing
28	75086190	2	Hex bolt, 1/2-20 x 2"
29	27566000	1	Drive axle
30	75050004	2	Grommet
31	27597210	1	Trail Charger
32	90814908	1	Wire Harness, Trail Charger
33	90814913	2	Ring Terminal
34	85803391	20	Bearing
35	75089321	1	Grommet, 3/4" I.D.
36	90814240	1	Replacement pump enclosure base
37	90814902	1	Replacement Battery Box, cover included

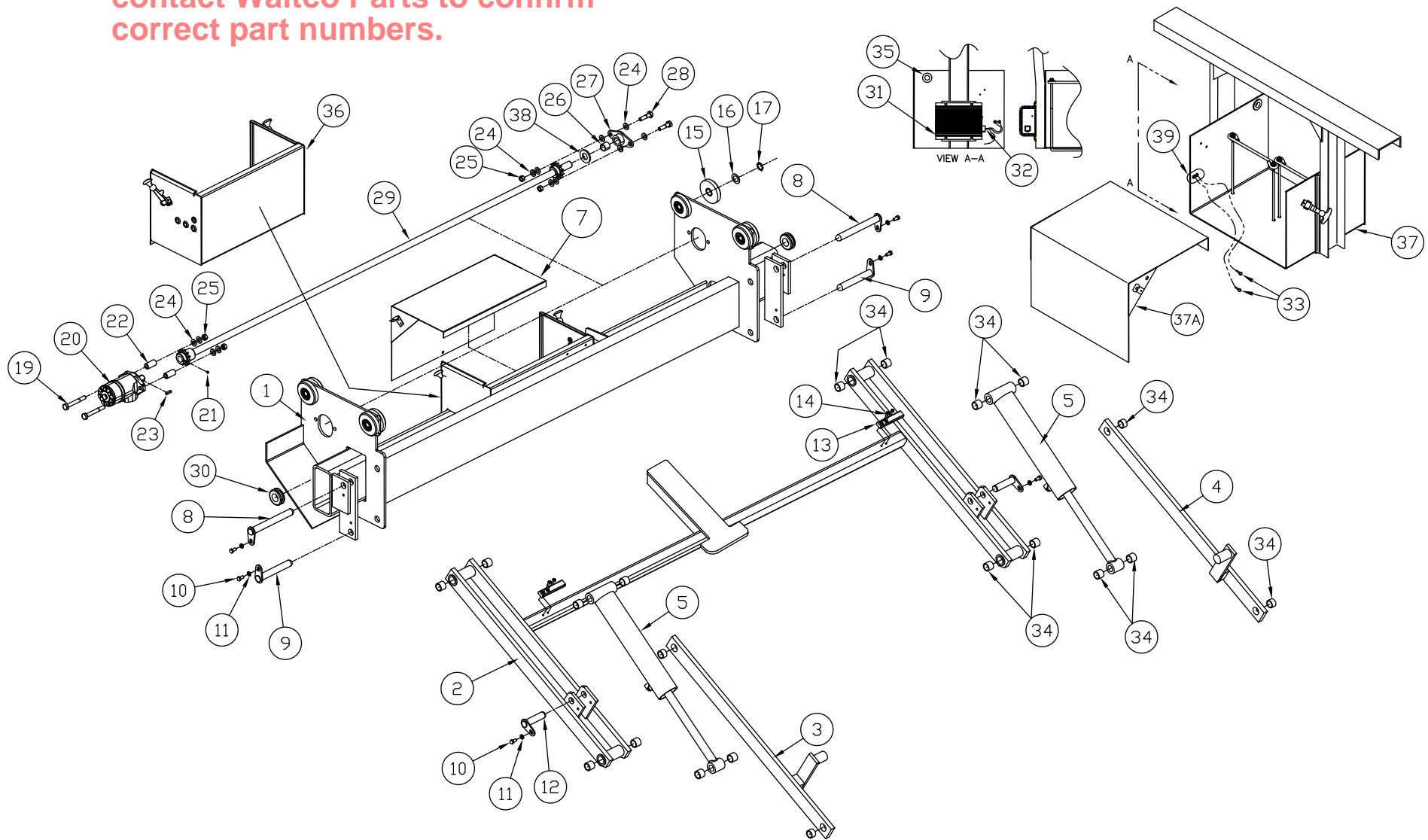
ITEM	PART NUMBER	QTY	DESCRIPTION
37A	10291503	1	Battery Box Cover
38	75081223	1	Bronze washer
39	75050003	2	Grommet, 3/16" I.D.

**WALTCO**  
**TRUCK EQUIPMENT CO.**  
**DGS-30 (90814)**

REVISED: 12-30-08  
REV. 01

**PM-672A**

**IMPORTANT:**  
**MOUNT FRAME** Parts shown may not match your liftgate. See **PARTS NAVIGATOR** or contact **Waltco Parts** to confirm correct part numbers.



**WALTCO**  
**TRUCK EQUIPMENT CO.**  
**DGS-30 (90814)**

REVISED: 12-30-08  
 REV. 01

**PM-672A**

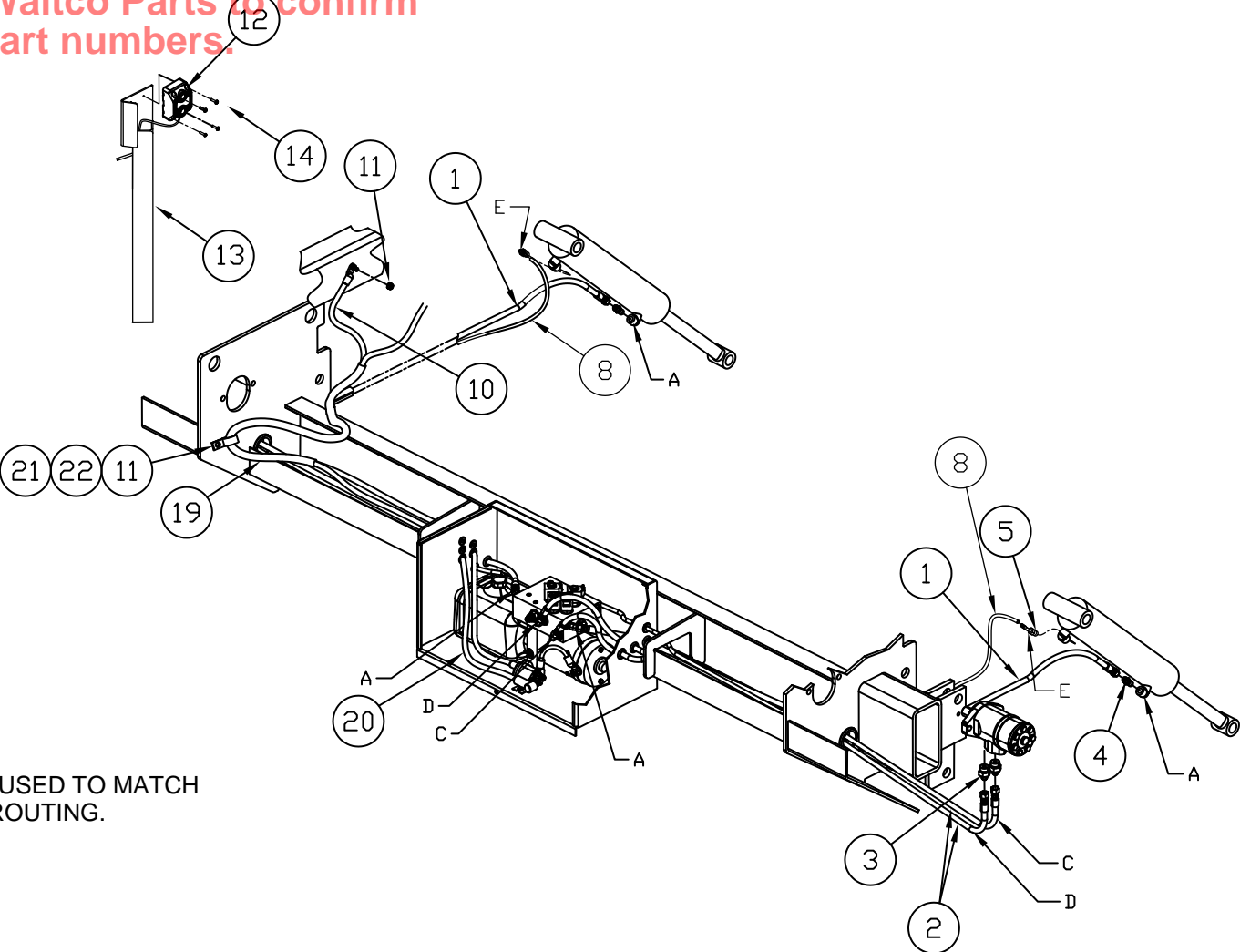
ITEM	PART NUMBER	QTY	DESCRIPTION
1	75084040	2	Hydraulic hose, 1/4" x 75-3/4"
2	90431703	2	Hydraulic hose, 1/4" x 55-3/8"
3	75083319	2	Connector
4	75083309	2	Connector
5	75082749	2	Barbed Fitting
8	82021059	2	Return Line, 1/4" PVC 77" for Curb Side 61" for Driver's Side
10	27595010	1	Ground cable, 2Ga, 100"
11	75085003	2	Hex nut, 5/16-18
12	10099323	1	Switch, Raise / Lower, 15' cord
13	27597110	1	Switch bracket
14	75086860	4	Screw, #8-32 x 3/4"
19	90814910	1	Spiral Loom
20	90814911	1	Power Cable Ass'y, 0 Ga., 31-1/2 Ft.
21	90814909	1	Hose Clamp, 1" I.D.
22	75086036	1	Screw, 5/16-18 x 1

**WALTCO**  
**TRUCK EQUIPMENT CO.**  
**DGS-30 (90814)**

REVISED: 12-31-08  
REV. 01

**PM-673A**

**IMPORTANT:**  
Parts shown may not match your liftgate. See **PARTS NAVIGATOR** or contact **Waltco Parts** to confirm correct part numbers.



**NOTE**  
LETTER CALLOUTS USED TO MATCH  
PORTS FOR HOSE ROUTING.

- A – RAISE
- C – IN
- D – OUT
- E – BREATHER LINE

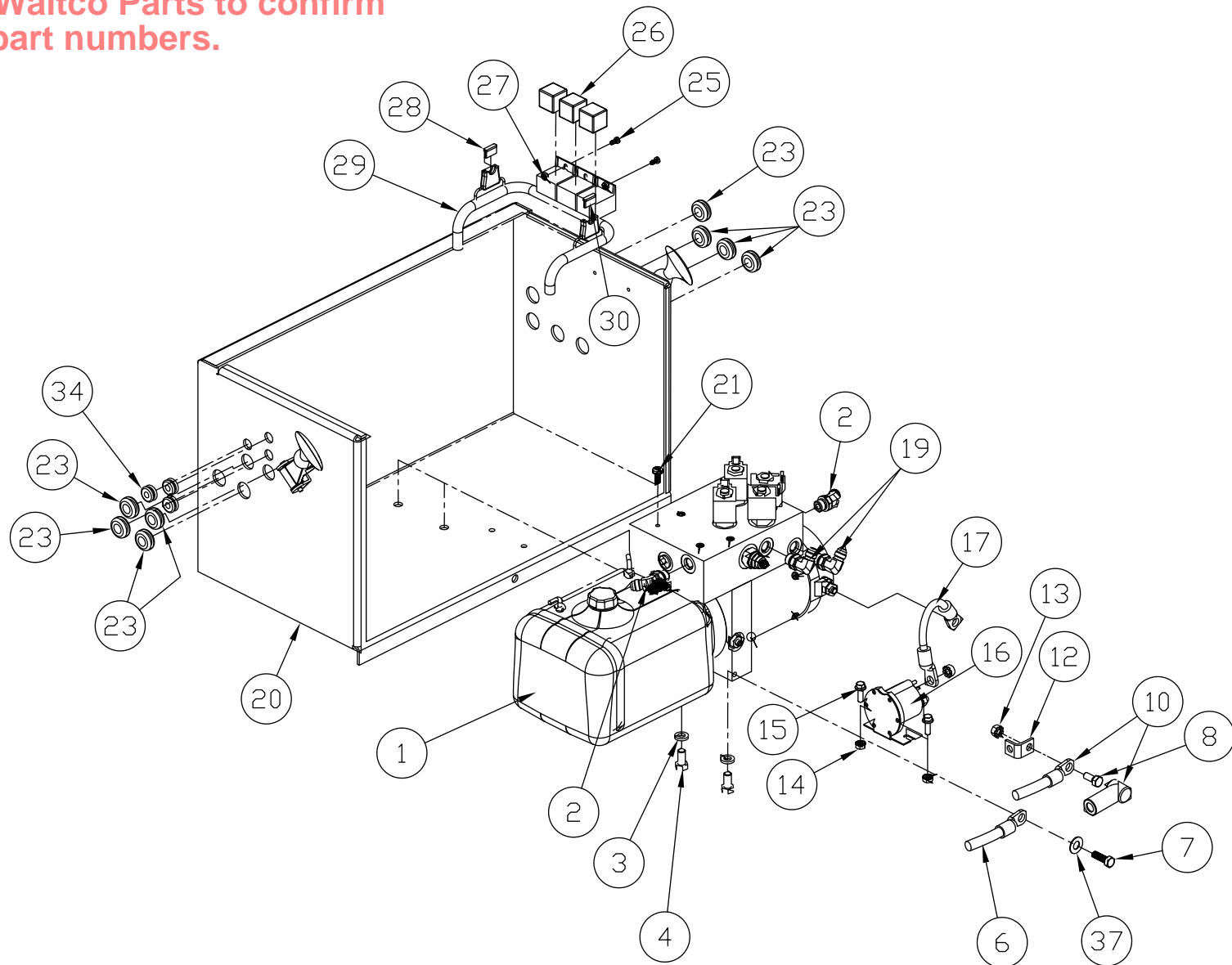
ITEM	PART NUMBER	QTY	DESCRIPTION
1	90445950	1	Pump unit, gravity down
2	75082866	2	Connector, elbow 45, 9/16-18 JIC Male x 9-16-18 SAE Male
3	75088081	2	Lock washer 3/8"
4	75086055	2	Hex bolt, 3/8-16 x 3/4"
6	27595010	1	Ground cable, 2 Ga., 100"
7	75086036	1	Hex bolt, 5/16-18 x 1"
8	75086065	1	Hex bolt, 5/16-18 X 3/4"
10	90814911	1	Power cable, 0 Ga., 31-1/2 Ft.
12	10099501	1	Terminal strip, 90 Deg.
13	75085003	2	Serrated hex nut, 5/16-18
14	75085001	2	Hex nut, 1/4 - 20
15	75086922	2	Hex bolt, 1/4" - 20 X 1/2"
16	70093640	1	Starter Solenoid, 12V
17	70093641	1	Power cable, 6Ga
19	75082869	2	Connector, elbow 90, 9/16-18 JIC Male x 9-16-18 SAE Male
20	90814240	1	Pump enclosure base
21	75086702	1	Screw, 1/4"-20 X 5/8"
23	75089313	8	Grommet, 1/2"
25	75086916	2	Screw, #8 X 3/8
26	85803921	3	Relay, 12V
27	75085400	2	Hex nut, #8-32
28	75089853	1	Fuse, 5A
29	27597000	1	Harness, motor / valve control
30	75089851	1	Fuse, 10A
34	75089322	3	Grommet, 5/16"
37	75088052	1	Washer

**WALTCO**  
**TRUCK EQUIPMENT CO.**  
**DGS-30 (90814)**

REVISED: 12-31-08  
REV. 01

**PM-674A**

**IMPORTANT:**  
**PUMP BOX** Parts shown may not match your  
 liftgate. See **PARTS NAVIGATOR** or  
 contact **Waltco Parts** to confirm  
 correct part numbers.



**WALTCO**  
 TRUCK EQUIPMENT CO.  
 DGS-30 (90814)

REVISED: 12-31-08  
 REV. 01

**PM-674A**

# Chapter 8 – How To Order Parts

**Repairs should be made only by authorized mechanics using WALTCO Replacement parts.**

**When ordering repair or replacement parts, please include all the information asked for below. If this information is not available, a complete written description or sketch of the required part will help WALTCO identify and deliver the needed part to you.**

---

## **THE FOLLOWING INFORMATION MUST BE INCLUDED:**

1. SERIAL NUMBER - [WALTCO liftgate serial numbers can be found on the Specification Tag attached to the mount frame. (On older units the Specification Tag is located on the side or bottom of the platform.)]
2. MODEL NUMBER - [Or capacity]
3. PLATFORM SIZE

---

## **THEN INCLUDE THE FOLLOWING INFORMATION:**

4. PART NUMBERS
5. DESCRIPTION
6. QUANTITY REQUIRED

---

## **MAIL, E-MAIL OR PHONE YOUR REQUEST TO:**

Waltco Truck Equipment Co.  
285 Northeast Avenue  
Tallmadge, OH 44278  
1-800-411-5685  
FAX: 1-800-411-5684  
E-MAIL: parts@waltco.com

**ALL PARTS ARE F.O.B. FROM THE SHIPPING FACTORY**

---

## **PLEASE NOTE:**

**To assure you of continuing and effective quality control, our warranty policy permits replacement of hydraulic cylinders, valves and motor pump units when their factory seals are intact. Parts under warranty will be exchanged promptly after careful inspection of the returned assemblies.**

---

This page has been left intentionally blank.

# IMPORTANT

## TO BE KEPT IN VEHICLE

---

### CAUTION:

**STAND CLEAR AND KEEP CLEAR OF PLATFORM  
AREA WHILE OPERATING LIFTGATE.**

---

FOR OPERATION OF THIS UNIT, REFER TO THE "OPERATION INSTRUCTIONS" INSIDE THE OWNER'S MANUAL AND THE OPERATION INSTRUCTIONS DECAL.

## LUBRICATION INSTRUCTIONS

Refer to the lubrication chart in this manual.

## DO'S AND DON'TS

- DO:** Make certain area in which the platform will open and close is clear before opening or closing platform.
- DO:** Make certain platform is properly latched when in transit.
- DO:** Make certain platform area, including the area in which loads may fall from platform, is clear before and at all times during operation of the liftgate.
- DO:** Operate the liftgate with the control switches only.
- DO:** Check oil level monthly and change oil yearly.
- DO:** Use hydraulic fluids listed on the HYDRAULIC FLUID CHART (found inside this manual) or equivalent.
- DO:** Lubricate as per the LUBRICATION INSTRUCTIONS AND LUBRICATION SCHEDULE found in this book.
- DO:** Read and follow WARNING DECALS, OPERATION DECALS and OWNER'S MANUAL.
- DO:** Visually inspect the liftgate frequently and keep it in adjustment.
- DO:** Be certain vehicle is properly and securely braked before using the liftgate.
- DO:** Repair the liftgate when it is found to be faulty to prevent accidents.
- DO:** Keep all decals in place and legible and retain the Owner's Manual in the vehicle or ALL WARRANTIES ARE VOID.
- DON'T:** Allow the liftgate to be used by persons not familiar with its operation.
- DON'T:** Use the liftgate if unit shows signs of abuse or fails to operate freely.
- DON'T:** Permit the motor to run after the liftgate is raised to bed level.
- DON'T:** Overload the liftgate (Refer to Manual for proper capacity of liftgate).
- DON'T:** Use brake fluid.