

WALTCO



FSL SERIES

Visit us at www.waltco.com

Owner's Manual

3000 lb. Capacity
Slimline Flipaway

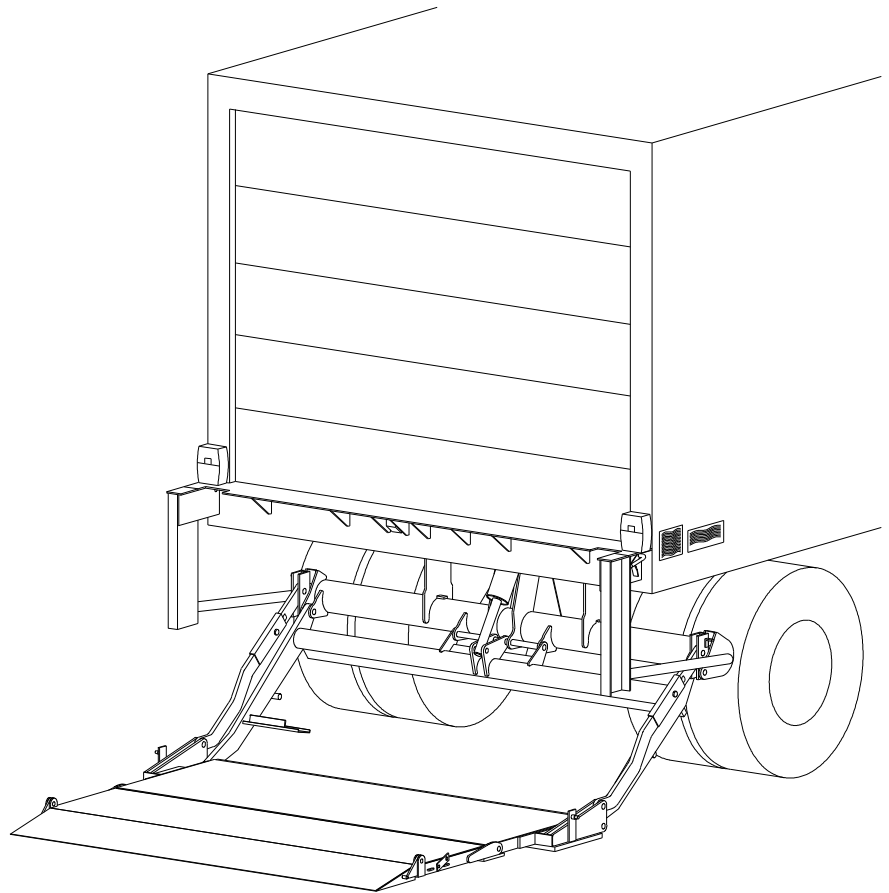
IMPORTANT

KEEP IN VEHICLE

! WARNING

Improper operation and maintenance of this liftgate could result in severe personal injury or death.

Read and understand the contents of this manual and all warning and operation decals before operating and/or performing maintenance on this liftgate.



6-2010

GR00993

OHIO

285 Northeast Avenue
Tallmadge, OH 44278
(330) 633-9191
FAX – (330) 633-1418

Table of Contents

	Chapter
INTRODUCTION	
SAFETY INFORMATION	1
LIFTGATE TERMINOLOGY	2
OPERATIONS INSTRUCTIONS	3
PREVENTIVE MAINTENANCE	4
PLACEMENT OF DECALS	5
LUBRICATION INSTRUCTIONS	6
PMs & SCHEMATICS	7
HOW TO ORDER PARTS	8

INTRODUCTION

If anyone observes improper installation, improper operation, or damage, they should immediately contact a qualified person for assistance and correction. We strongly urge anyone that has any questions or doubts as to the installation, condition, use, operation, maintenance or repair of the liftgate to contact us at Waltco where we have qualified personnel that will be happy to assist you. Telephone numbers and addresses of these locations are listed in the Owner's Manual and Installation Instructions.

INSTALLATION

Waltco liftgates should only be installed by those with sufficient basic skills to understand the installation and operation of the liftgate, along with the equipment on which the liftgate is being installed. Waltco's installation instructions are not intended to give rationale for all the instructions that are given; however, it is the intent of these instructions to give the installer both the operations and what we believe to be the most desirable sequence of implementing these operations. These instructions can in no way expand into an area where they will replace a qualified person, or clear thinking and a basic knowledge that must be possessed by the installer.

It has been our experience that a knowledgeable journeyman following these instructions and observing the operation of the liftgate will have a sufficient comprehension of the liftgate to enable this person to troubleshoot and correct all normal problems that may be encountered.

Failure to follow the installation instructions, adjustments and mounting dimensions may result in improper and unsafe operation of the liftgate. Unauthorized alterations of the liftgate can cause an undesirable and dangerous condition.

OWNER'S MANUAL

The Waltco Owner's Manual is intended to act as a guide for operation and routine maintenance but is no way intended to encourage usage or repair of the liftgate by those who are not qualified to do so.

The contents of the owner's manual include, but are not limited to general operation instructions, routine lubrication, parts lists, and an outline of things that should be checked but may not be obvious to those not technically qualified. This manual assumes the liftgate is properly installed, undamaged and operates correctly. Improper installation, improper operation, or damage should be immediately corrected by a qualified person.

INSPECTION

As part of the regular inspection of a liftgate and after damage or suspicion of an overload, inspect for wear or structural damage and make necessary repairs or replacements. Check all structural components and their attachment to the liftgate for cracked welds, loose fasteners, wear and part deformation. Check cylinder and hose for leaks. Inspections and repairs should be made by a qualified mechanic.

REPLACEMENT PARTS

Use only Waltco original equipment replacement parts. Components of other liftgate manufacturers may outwardly appear to be the same but are not interchangeable with Waltco products. Waltco components are specifically designed for safety requirements, reliability and compatibility with our products. Refer to your Waltco parts manual when ordering parts. NOTE: When ordering, give model and serial number of liftgate.

DECALS

It is important that every vehicle that has a WALTCO Liftgate have legible DECALS clearly posted on the vehicle and an OWNER'S MANUAL in the vehicle at all times as a guide for proper operation and maintenance.

Additional DECALS and OWNER'S MANUALS can be obtained from WALTCO TRUCK EQUIPMENT COMPANY

80101388 Rev 02 EO 6156

Chapter 1 Safety Information

WARNING

Read, understand, and follow all of the warning listed below.

Failure to follow these warning could result in severe personal injury or death.

- Read and understand the Owner's Manual, all decals and warning on liftgate before operating liftgate.
- Do not operate liftgate without a thorough knowledge and understanding of the operation of the liftgate.
- Liftgate hazards can result in crushing or falling.
- This liftgate is designed for loading and unloading of cargo. If personnel are required to ride liftgate, observe and familiarize yourself with the liftgate operation, decals and manuals. Ensure stable footing at all times.
- Do not ride liftgate with unstable loads.
- Wheeled loads must be properly retained from rolling.
- Tall, high center of gravity loads must be retained from falling over.
- Never overload liftgate.
Refer to the Explanation of Specification Tag in the Liftgate Terminology chapter for liftgate capacity rating.
- Keep hands and feet clear of all potential pinch points.
- Never use liftgate if it makes any unusual noise, has unusual vibration, raises or lowers unevenly, or fails to operate smoothly.
- Never use liftgate if it shows any signs of structural damage such as cracked welds, bent or distorted members.
- Do not attempt any repairs unless you are qualified to do so. Care should be taken when work is performed on a disabled liftgate located near moving traffic. When possible the vehicle should be moved away from traffic areas for repair. Precautionary measures should be taken to ensure personal safety including those recommended in Federal Motor Vehicle Safety Standards 571.125.
- All protective covers, guards, and safety devices must be in place and access doors closed before operating liftgate.
- Do not allow anyone to stand in, or near area, in which Platform will open and close before opening or closing Platform.
- Do not allow anyone to stand near the Platform where a falling load could land on them.
- Platform is always to be properly stored and secured for transit. See the Owner's Manual for details.
- Take care to retain cargo during transit for liftgate Platforms which function as the tailgate or door of the cargo area. Small objects can fall through the space between the vehicle and the folded Platform.
- A Lock-Out device or Shut-Off Switch should always be used to prevent unauthorized use of liftgate.
- For liftgates with Runners, never use liftgate if Runners do not travel freely and smoothly.
- For liftgates with Roller Lifting Chain, the Chain should be replaced every (5) five years or 15,000 cycles, whichever comes first. Replace only with Waltco approved Roller Chain.
- Never transfer loads which exceed lifting capacity on or over any part of the Platform unless the liftgate is equipped with a special reinforced Platform and Platform Support Bars for use when the Platform is used as loading ramp (dock board). Refer to the "Using Platform as a loading ramp" Chapter in the Operation Instructions of the BZ/RZ series Owner's Manual.
- For liftgates equipped with Trailer Hitches, never exceed the rated capacity of the hitch. Do not exceed the vehicle's weight rating. Refer to the vehicle's Owner's Manual.
- Vehicle must comply with all state and federal standards.
- Follow the "Maintenance Guide" chapter in the Owner's Manual.

Chapter 1 Safety Information

Liftgates with Tilt Function

- Proper use of the Control Switches is of extreme importance.
- Improper use of Tilt Switch could cause load to fall from the Platform or damage the liftgate.
- Platform should be in a generally horizontal position when raising or lowering with a load.
- In any tilt position, the Platform may vary from level while raising or lowering the Platform.

Liftgates equipped with spring operated Cam Closer

- Replace Cam Release Spring every five (5) years or 15,000 cycles, whichever comes first.

RGL-Series Liftgates

- Make certain Platform Brake mechanisms are operating properly.
- The Runners are always to remain powered up against the Upstops Pins when in transit.
- Inspect Cables every three (3) months or 750 cycles, whichever comes first. Cables must be replaced if they show signs of wear, distortion, kinking or if any broken wires are visible
- Replace cables every five (5) years or 10,000 cycles, whichever comes first.



This is the safety alert symbol. This manual uses this symbol to alert you to potential personal injury hazards.

Obey all safety messages that follow this symbol to avoid personal injury or death.

SIGNAL WORDS

WARNING

Indicates a potentially hazardous situation, which if not avoided, could result in death or serious injury.

Black letters on an orange background

CAUTION

Indicates a potentially hazardous situation, which if not avoided, may result in minor or moderate injury. May also be used to alert against unsafe practices.

Black letters on a yellow background.

NOTICE

Indicates a potentially hazardous situation, which if not avoided, may result in property damage.

 **WARNING** **CAUTION*****NOTICE***

WALTCO Warranty Policy

WALTCO warrants its products free of defects in materials and workmanship.

WALTCO will replace components found defective during the warranty period. Labor will be reimbursed according to our flat rate labor schedule at the prevailing shop rate.

Contact our Sales or Warranty departments for the warranty period of your model or for information regarding our flat rate labor schedule.

WALTCO Warranty Claim Procedure

For consideration, all claims must be received within 30 days of repair and include the following information:

- Liftgate Serial Number
- Description of problem and corrective actions
- Itemization of the labor charge to include the number of hours and labor rate

Replacement warranty parts can be obtained by contacting Waltco's Parts Department. Parts must be returned for inspection when requested.

Exclusions:

Waltco's warranty does not include reimbursement for service calls, vehicle rental, towing, travel time, fabrication of parts available from WALTCO, damage from misuse or abuse, negligence, accidents, alteration, loss of income or overtime expense, oil, or normal wear.

Diagnosis and troubleshooting time are included in the flat rate labor times.

Warranty and technical information is available from WALTCO's toll free customer service lines from 8:00 a.m. to 5:00 p.m. EST.

Waltco Truck Equipment Co.

285 Northeast Ave, Box 354, Tallmadge, OH 44278

1-800-211-3074, 330-633-9191

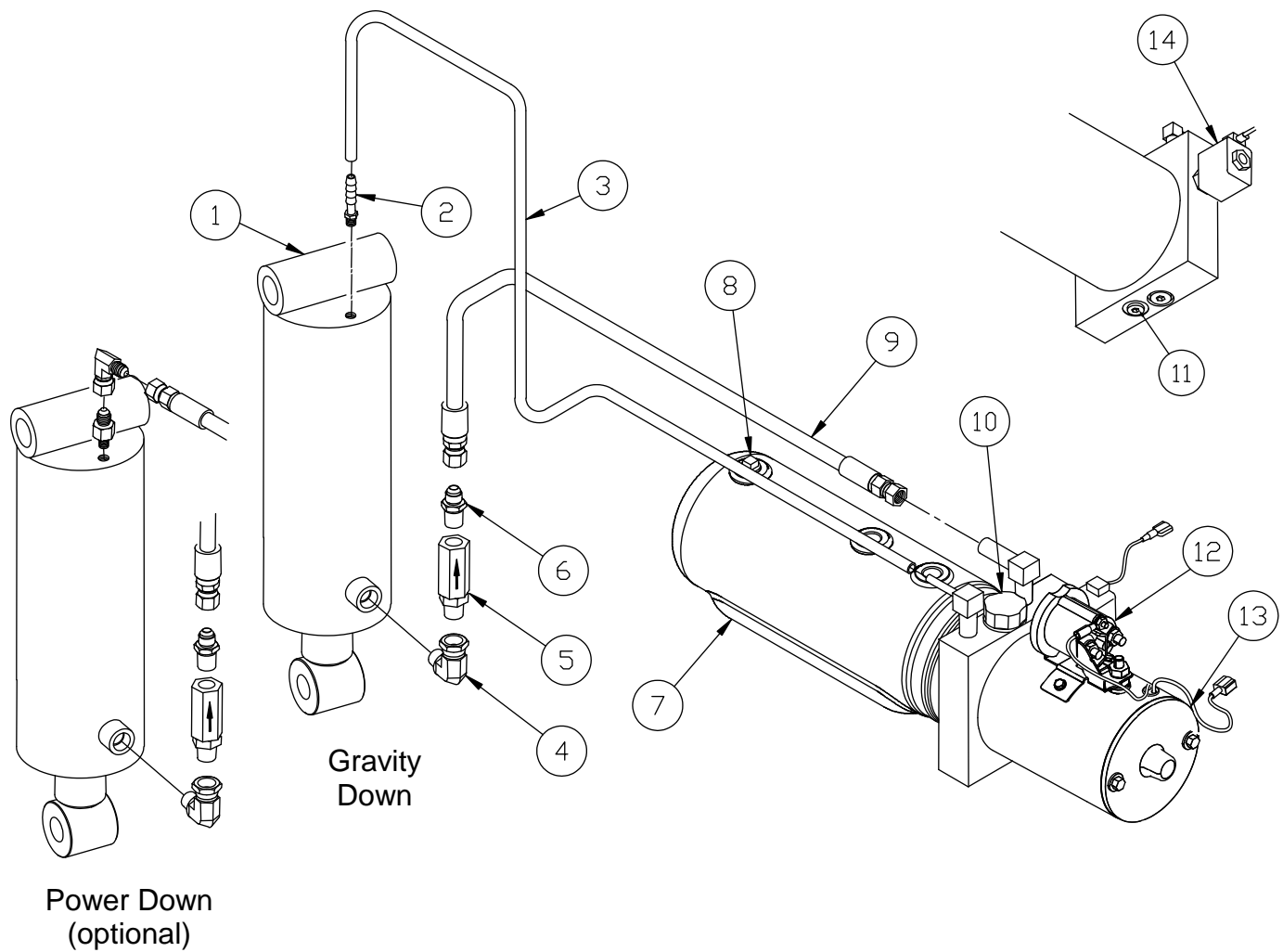
Please visit our websites: <http://www.waltco.com> or <http://www.hiab.com>

We're behind you all the way!

Chapter 2

Liftgate Terminology

- | | |
|------------------------------------|-----------------------|
| 1. Hydraulic Cylinder | 9. Hydraulic Hose |
| 2. Barbed Fitting | 10. Breather |
| 3. Return Line | 11. Drain Plug |
| 4. Hydraulic Fitting (Elbow) | 12. Start Solenoid |
| 5. Pressure Compensated Flow Valve | 13. Motor |
| 6. Hydraulic Fitting (Connector) | 14. Lowering Solenoid |
| 7. Pump Reservoir | 15. |
| 8. Steel Plug | 16. |



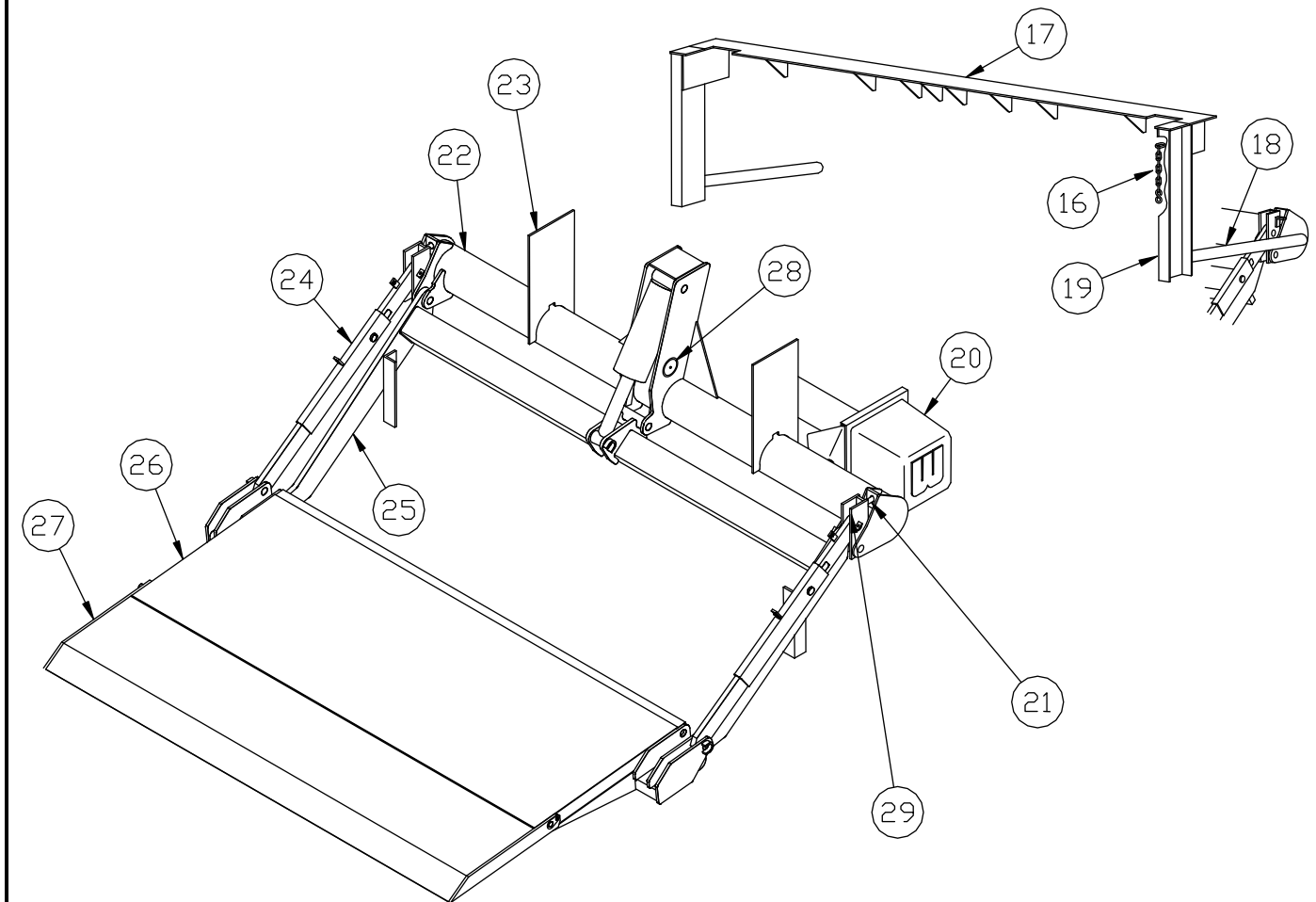
GR00995

Chapter 2

Liftgate Terminology

- 17. Latch Chain
- 18. Bed Extension
- 19. Dock Bumper Brace
- 20. Dock Bumper
- 21. Pump Cover
- 22. Stop Block Adjustment Bolt
- 23. Mount Tube Assembly

- 24. Mount Plate
- 25. Parallel Arm
- 26. Lift Arm Assembly
- 27. Deck Assembly
- 28. Deck Extension Assembly
- 29. Specification Tag
- 30. Stop Block



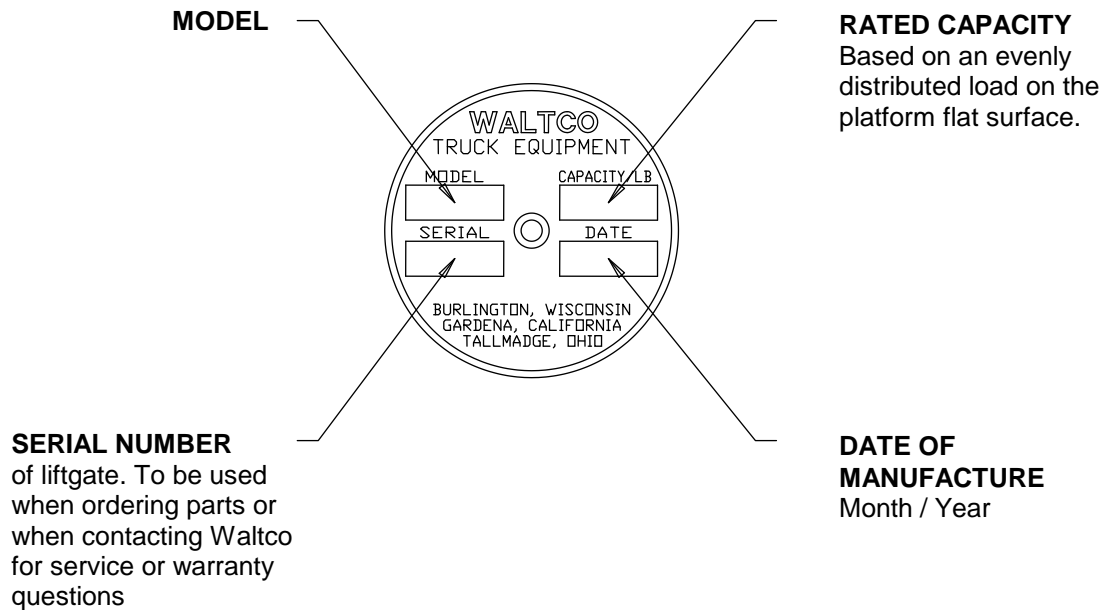
GR00996

Chapter 2

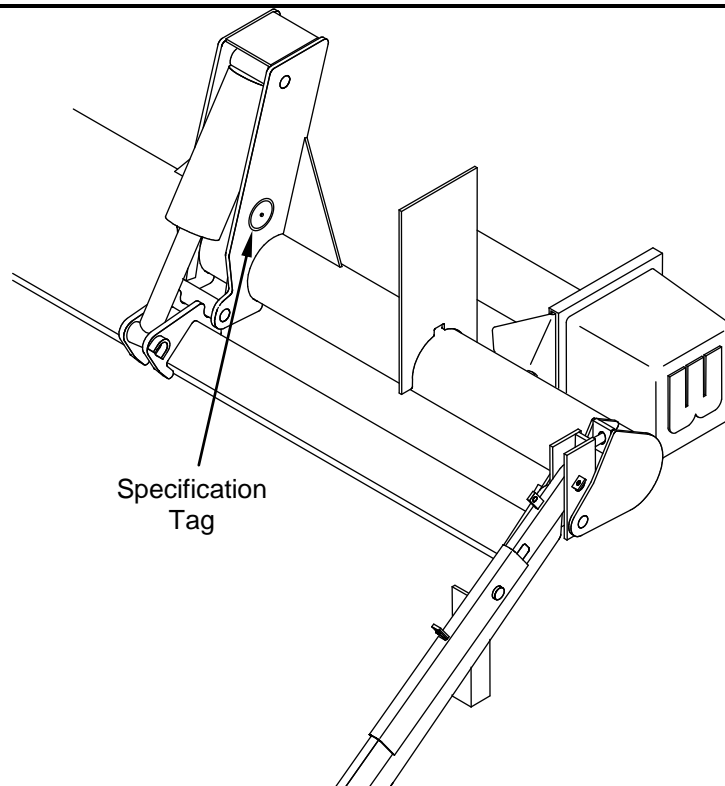
Liftgate Terminology

Explanation of Specification Tag

Model	Description	Capacity
FSL-30	Slimline Flipaway	3000 lbs.



GR00241



GR00996

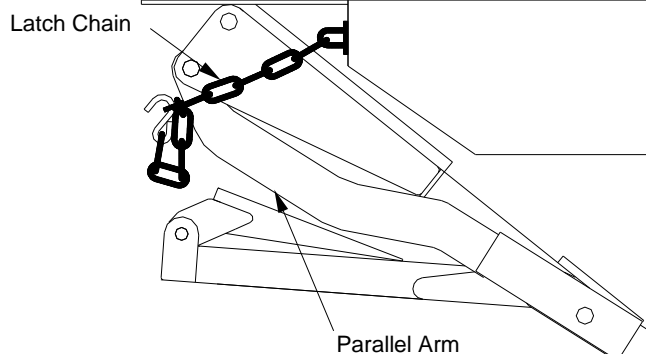
Chapter 3 Operation Instructions

TO OPEN PLATFORM

Remove Latch Chain from platform.



**Never force Latch Chain if platform weight is on chain.
To slacken chain, push Raise Switch.**

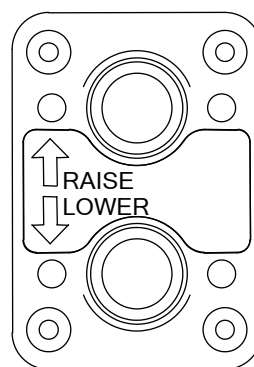


GR00994

TO OPERATE LIFTGATE

Use Raise and Lower Switch to raise and lower platform.

Load platform as close to vehicle and towards middle of platform as possible. Maximum rated capacity is based on an evenly distributed load on platform flat surface.



GR02094

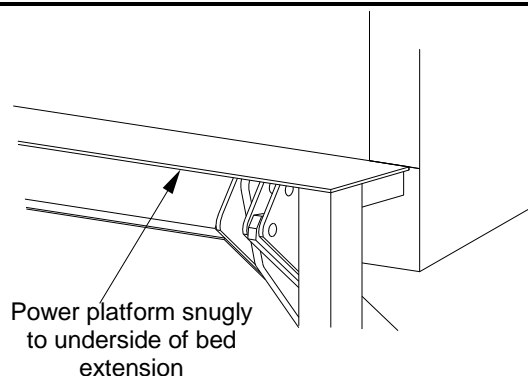
TO STORE LIFTGATE FOR TRANSIT

Lower platform to ground.

Fold platform.

Raise platform to transit position.

Power platform snugly to underside of bed extension.



GR00997

SECURE PLATFORM FOR TRANSIT

Close platform.

Chain platform as shown.

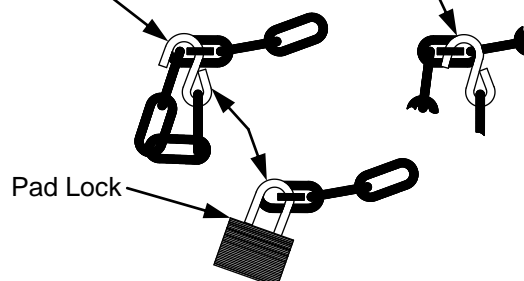


To prevent unauthorized use of liftgate, use a heavy gauge pad lock in place of S-Hook.

Correct hooking of S-Hook

Incorrect hooking of S-Hook

Pad Lock



GR02506

Chapter 4 Preventive Maintenance

Waltco recommends that the FSL-Series liftgate be inspected at 6 month or 3000 cycle intervals to help assure proper function and operation of the liftgate.

Note: Photocopy the following PM Checklist to help keep track of periodic maintenance on the liftgate. Keep completed form with maintenance records.

For more detailed instructions on the following checklist items, refer to the appropriate sections in this Owner's Manual.

Do not continue to use liftgate if any points of inspection listed at left, or below, may cause you to think the liftgate is unsafe. Repair immediately.

If liftgate is found to be in need of repair or adjustment not covered in this manual, contact your nearest Waltco Distributor.

WALTCO FSL-SERIES LIFTGATE PREVENTIVE MAINTENANCE CHECKLIST

PM Interval: 6 Months or 3000 Cycles

Date: _____

Vehicle No. _____

Mechanic: _____

Liftgate S/N: _____

Model: _____

Check appropriate box below for each step:

6 Month Liftgate PM Procedures

1	OK	Repair Required	Corrected	Check for apparent damage to the lifting structure, such as bent or distorted members or cracked welds, which may have resulted from overloading or abuse.
2	OK	Repair Required	Corrected	Check that all pins, bolts and fasteners are tight and secure.
3	OK	Repair Required	Corrected	Check for worn or damaged bearings.
4	OK	Repair Required	Corrected	Check that controls operate properly.
5	OK	Repair Required	Corrected	Check all battery cables and connections (both positive and ground cables) to be sure they are tight and free of corrosion.
6	OK	Repair Required	Corrected	Check that transit chain properly hooks onto transit chain lug.
7	OK	Repair Required	Corrected	Check operation of lockout device.
8	OK	Repair Required	Corrected	Check fold over assist spring and related hardware.
9	OK	Repair Required	Corrected	Check platform tilt is adjusted correctly.
10	OK	Repair Required	Corrected	Check for hydraulic leaks in hydraulic cylinder(s), hoses, fittings, and valves.
11	OK	Repair Required	Corrected	Check oil level in reservoir.
12	OK	Repair Required	Corrected	Check lowering speed of platform.
13	OK	Repair Required	Corrected	Check that all decals are in place and legible.
14	OK	Repair Required	Corrected	Lubricate the liftgate per the "Lubrication Instructions".

12 Month Liftgate PM Procedures (Includes steps 1-14 above)

15	OK	Repair Required	Corrected	Inspect Pump Motor for wear or damage.
16	OK	Repair Required	Corrected	Replace Hydraulic Fluid.

Chapter 4 Preventive Maintenance

MONTHLY INSPECTION

Operate the liftgate throughout its entire operational cycle. Check for:

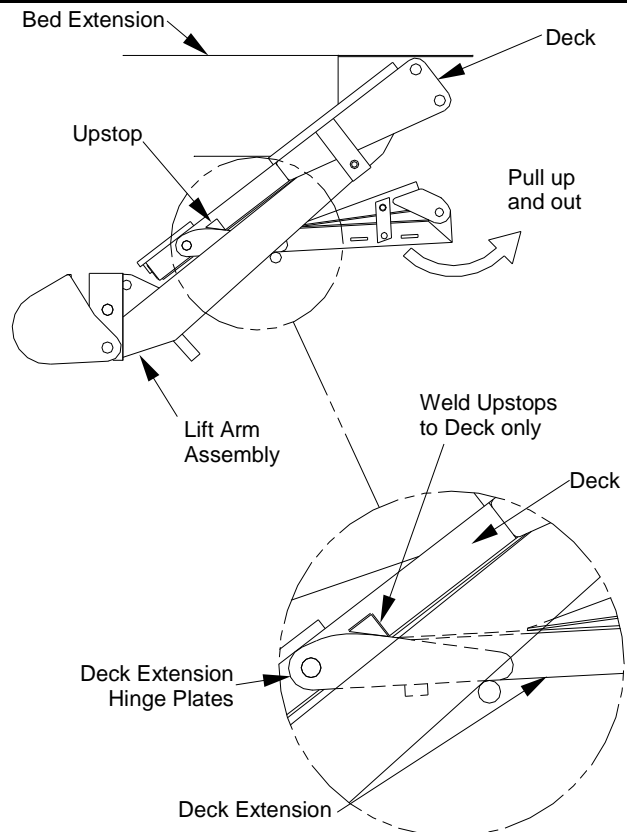
- Damage to lifting structure such as bent or distorted members or cracked welds.
- Bent or distorted cylinder pins or damaged cylinder.
- All pivot and cylinder pins are securely in place, undamaged and retained by their proper fasteners (refer to parts drawings in chapter 7, **"PMs and Schematics"**).
- Damaged or worn bearings that pivot and cylinder pins rest in.
- Controls operate correctly (refer to chapter 3, **"Operations Instructions"**)
- Check all power cables, ground cables, and connections.
- Clean and tighten all loose connections. Replace any damaged or corroded wires or connectors.

CHECK UP-STOPS

Raise liftgate into the stored position

Check that deck extension is tight against lift arm pins and extension hinge plates are tight against up-stops

If deck extension is loose, cut or grind off up-stops and replace as shown



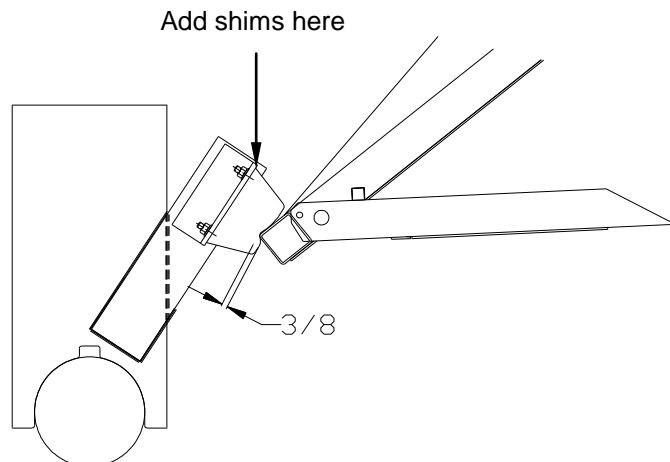
GR00998

Chapter 4 Preventive Maintenance

CHECK RUBBER SNUBBERS

Raise platform to fully closed position. Pull up and rearward on deck extension to make certain platform is fully in stored position.

Platform end tube should compress rubber snubber about 3/8". If not, add shims or large washers under snubber pads to obtain this compression.



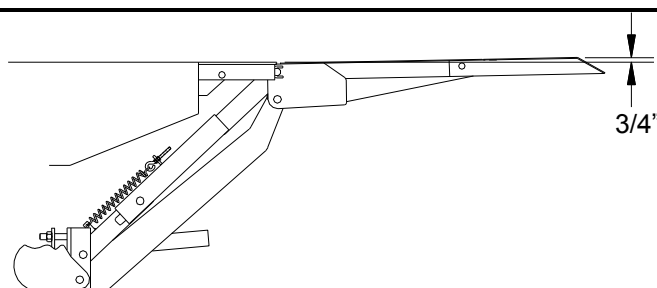
GR00185

CHECKING PLATFORM TILT

Stop block adjusting nuts must be tight before proceeding.

Raise platform to bed level and inspect. Trailing edge of platform should be at least 3/4" above bed extension.

If not, carefully inspect all liftgate components for wear or damage. Replace any damaged or worn components.



GR00164

ADJUSTING PLATFORM TILT

Grind away welds holding leveling set triangles to stop blocks. Remove leveling sets.

Turn both 3/4" hex nuts at Stop Blocks until deck extension tip is at least 3/4" above bed extension.

Adjust both sides evenly.

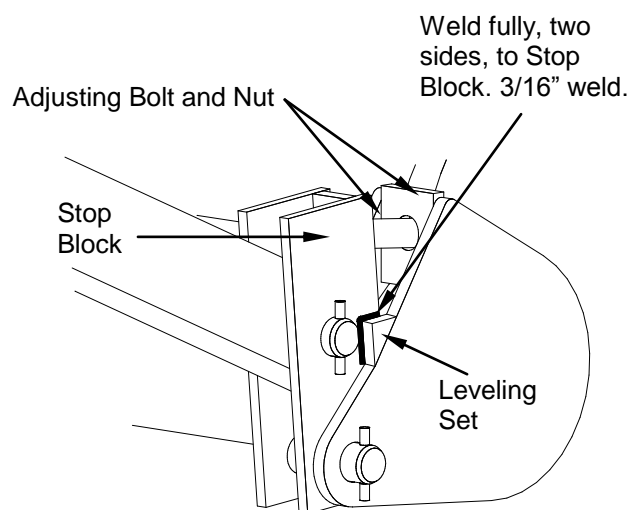
Locate and weld a leveling set to each stop block.

NOTE:

Weld leveling set to stop block ONLY
DO NOT weld to outer clevis or pivot pin.

Be sure to weld leveling sets on both stop blocks.

Be sure to adjust both stop bolts equally.



GR00165

Chapter 4 Preventive Maintenance

ADJUSTING PLATFORM FOLDING EFFORT

Adjusting tension of parallel arm springs may improve folding/unfolding of the platform for some installations.

Adjust springs on both arms equally.

Tighten nuts securely.



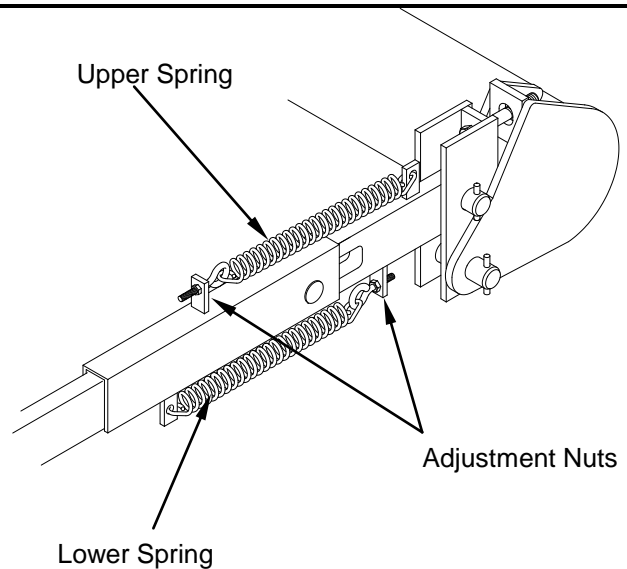
If spring assist is too strong, platform may unfold without assistance when lowering to ground. This is unsafe and MUST BE CORRECTED.

Reduce parallel arm spring tension.

When adjustment alone does not eliminate the problem, remove lower spring from one or both parallel arms. Adjust remaining springs for best operation.

NOTE:

To prevent damage to Parallel Arms, upper spring must always have more tension than lower spring.



GR00167

HYDRAULICS

Inspect for oil leaks in:

Hydraulic cylinder

Hydraulic hoses - Replace hoses if they show signs of excessive abrasion

Hydraulic fittings and valves

Tighten or replace all hydraulic components as may be required to stop oil leakage

CHECK AND FILL HYDRAULIC RESERVOIR

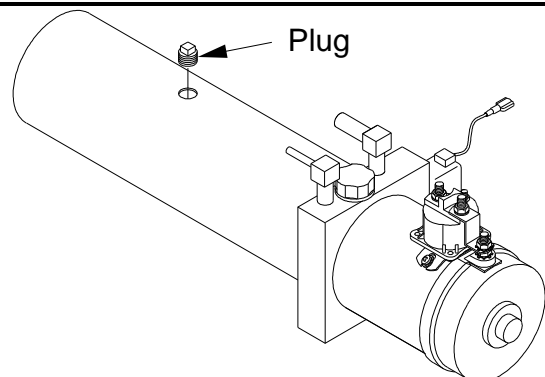
Position liftgate deck per chart below.

Remove Reservoir Plug.

Oil level should be 1/2" from top of reservoir.

If low, fill as required. Use appropriate fluid per chart.

Replace Plug.



GR00159

Chapter 4 Preventive Maintenance

LIFTGATE POSITION FOR OIL LEVEL CHECK

Deck should be in this position:	Gravity Down Pump:	Power Down Pump:
	Ground Level	Bed Level

Recommended Fluids

Temperature Range	Acceptable Fluids
-10° to 195° F	Mobil DTE 13M Shell Tellus 32T
-25° to 140° F	Mobil DTE 11M Shell Tellus 15T
-40° to 145° F	Mobil Aero HFA Exxon Unavis HVI 13
-45° to 200° F	Exxon Unavis HVI 26

A good quality SAE 10W motor oil may also be used in temperatures above 32° F.

Fill reservoir

- Fill with recommended fluid or equivalent.
- Fill the reservoir to within 1/2" from the top.

NOTICE:

Do not use the following fluids:

Brake Fluid

Power steering fluid

Automatic Transmission Fluid (ATF)

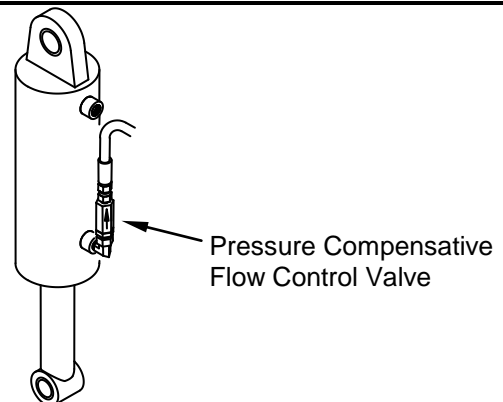
There is no speed adjustment on this liftgate.

Lowering speed is controlled by the pressure compensative valve plumbed at the cylinder. Regardless of weight on platform, liftgate should lower at approximately six (6) inches per second.

$$\frac{\text{Bed Height (inches)}}{6} = \text{Lowering Time (seconds)}$$



**This liftgate must have the correct pressure compensative valve installed:
FSL-30 = 70110020**



GR02597

INSPECT DECALS AND LUBRICATE LIFTGATE

Inspect all decals per Chapter 5 of this manual.

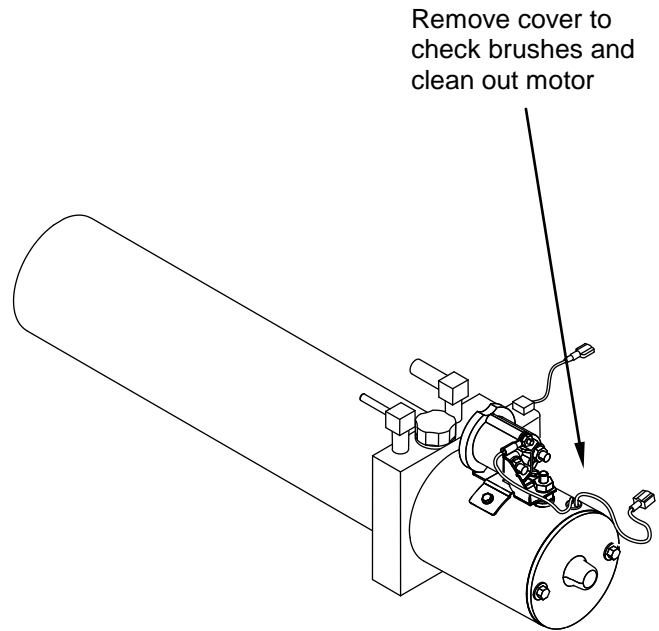
Replace any that are missing or damaged.

Lubricate liftgate per Chapter 6 of this manual.

Chapter 4 Preventive Maintenance

SEMI ANNUAL INSPECTION

- Inspect power motor:
- Disconnect battery cable.
- Remove end cover.
- Examine armature brushes for wear (Motor) should be replaced if less than 1/8" long).
- Clean out all residue from inside of motor housing.
- Apply several drops of light weight machine oil to armature shaft bearing in motor end cover.
- Reassemble motor.



GR02100

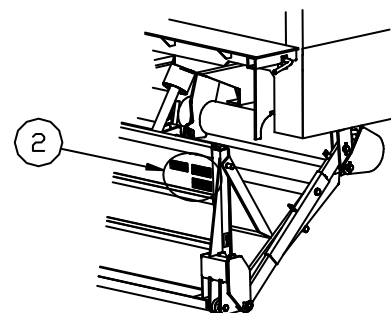
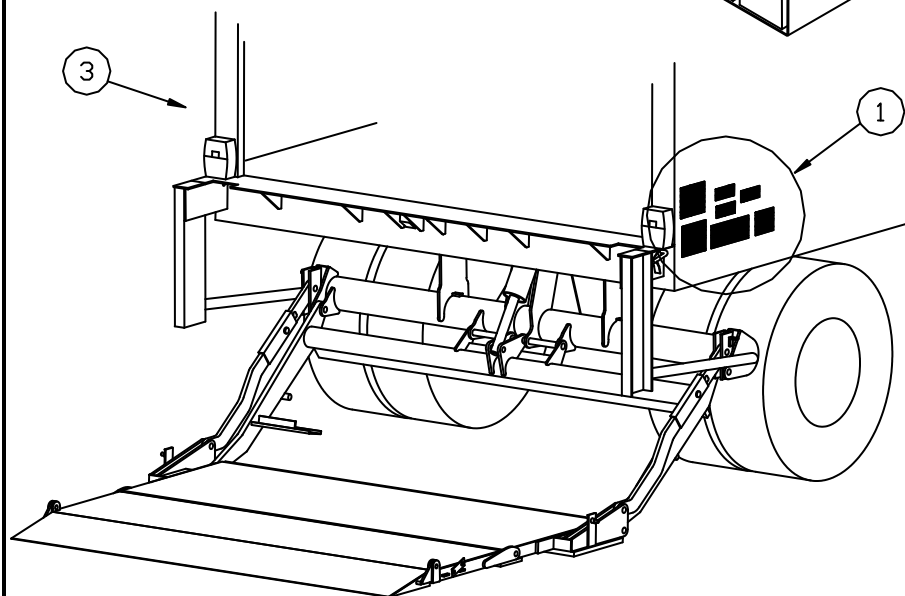
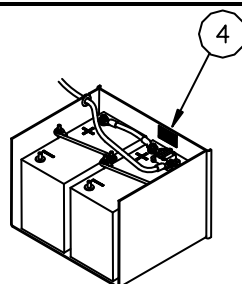
Chapter 5 Placement of Decals

⚠ All decals must be in place and legible or all warranties are void.

ITEM	DECAL	QTY	PART NO.	LOCATION
1	Safety Instructions	1	80100850	<p>Locate in a conspicuous place near controls.</p> <p>⚠ If your liftgate is equipped with dual controls, an additional Safety Instruction decal (80100850) is to be placed in a conspicuous place near the second set of the controls.</p> <p>Refer to the following diagram showing decal locations.</p>
	Operation	1	80100854	
	Hazard Decal	1	80101370	
	Important Decal	1	80100828	
	Stand Clear Decal	1	75089296	
	Motor Thermal Switch	1	80101480	
	FSL-30 - 3000 lb	1	80100257	
2	Use Handle Decal	1	75089295	<p>Locate near platform handle</p> <p>(positioned so as to be read when platform is being unfolded into loading position)</p>
	Stand Clear Decal	1	75089296	
	FSL-30 - 3000 lb	1	80100257	
3	Stand Clear Decal	1	75089296	Locate on driver's side of vehicle body near liftgate
4	Circuit Breaker Decal	1	80100829	<p>Locate next to liftgate circuit breaker.</p> <p>In applications where more than one circuit breaker is used, this decal must be placed in both locations</p>

To maximize decal adhesion to surfaces:

- Surface must be dry and clean
 - Firm pressure must be applied to decal
 - Minimum surface temperature 65°
- Heat gun may be used to heat surface



GR02504

Chapter 6 Lubrication Instructions

The liftgate should be lubricated every 120 days.

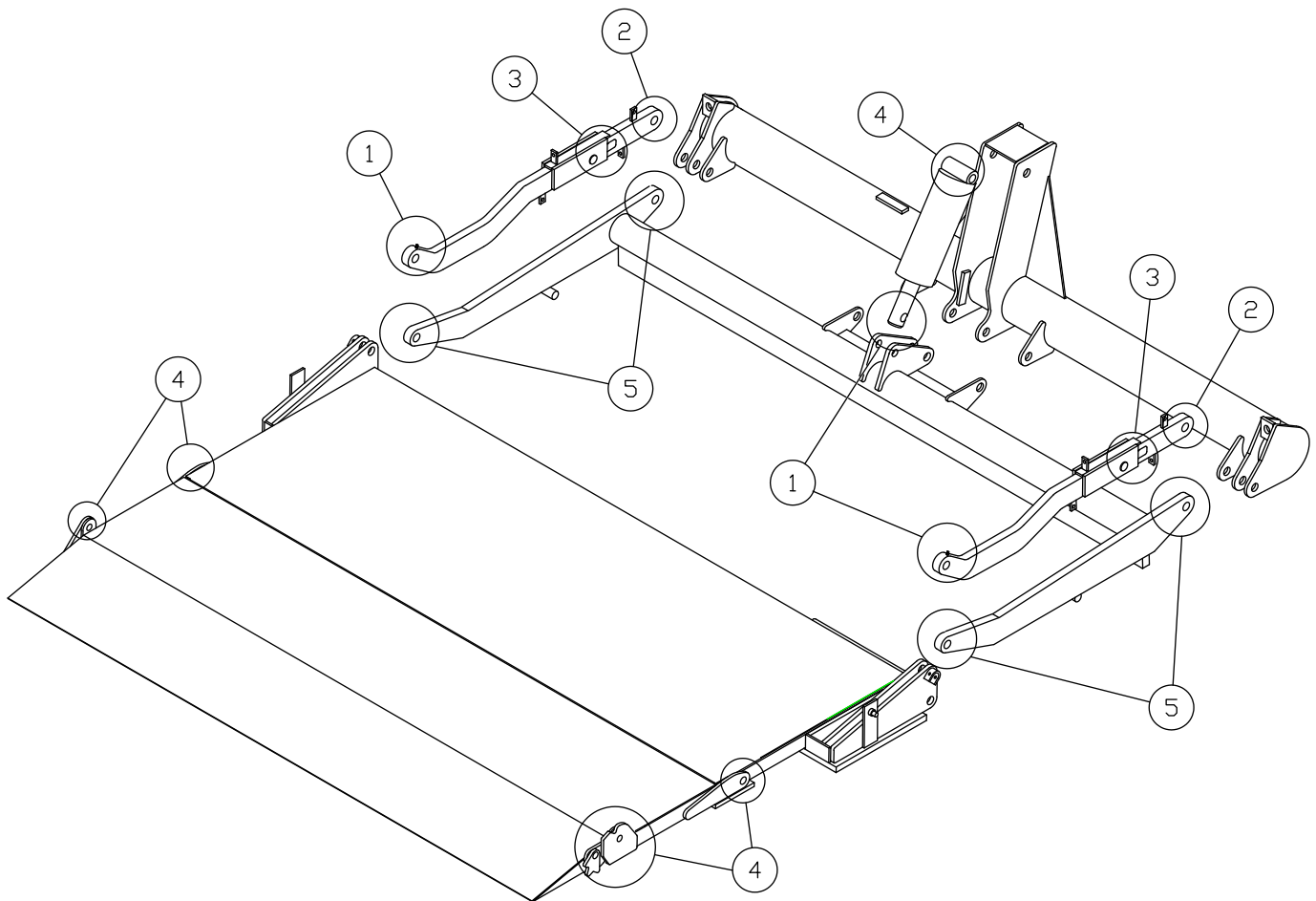
#1 – Grease with automotive type chassis grease with platform resting on ground.

#2 – Grease with automotive type chassis grease with platform in stored position.

#3 – Grease parallel arm slide with heavy chassis grease.

#4 – Oil with a light weight machine oil.

#5 – These are bearings that do not require grease, however, bearings can be sprayed with a non-petroleum based lubricant such as Zep-45 to retard corrosion of pins, reduce friction, and increase bearing life.



GR02505

Ch 7 PARTS MANUAL SHEETS

PM Number

MOUNT FRAME ASSEMBLY PM-14B

PLATFORM ASSEMBLY PM-19

BED EXTENSION PM-418

HYDRAULIC LAYOUT, GRAVITY DOWN..... PM-619A

HYDRAULIC LAYOUT, POWER DOWN PM-620A

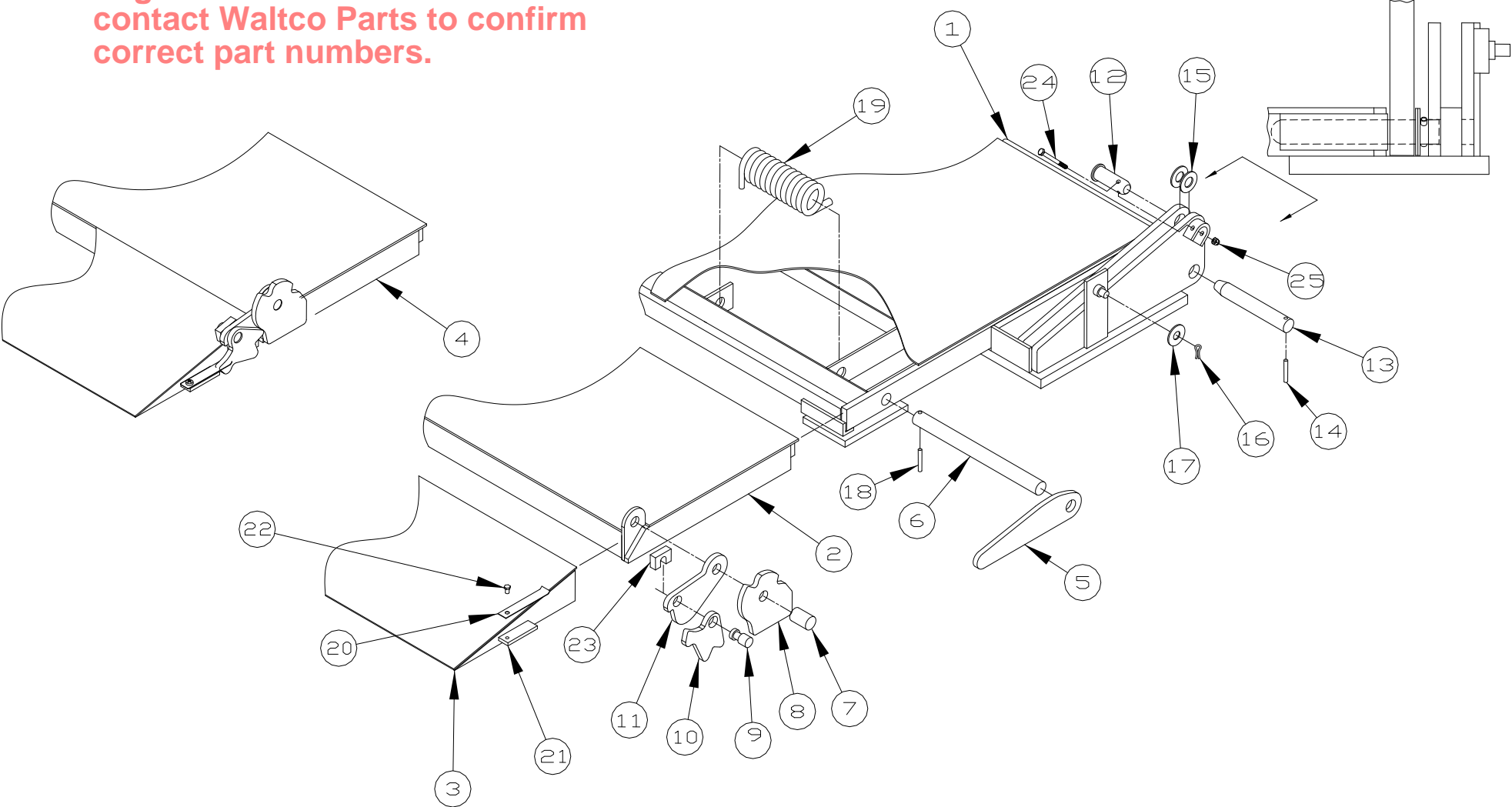
ELECTRIC CONTROL OPTIONS, GRAVITY DOWN..... PM-617B

ELECTRIC CONTROL OPTIONS, POWER DOWN PM-618C

ITEM	PART NUMBER	QTY	DESCRIPTION
—	21210020	—	Platform Complete, 29" x 80" + 12"
	21210040	—	Platform Complete, 48" x 80" B.E.
	21210042	—	Platform Complete, 48" x 80" + 12"
1	21211080	1	Deck Assembly
2	21213003	1	Deck Extension Assembly, 12" Retention
	21213002	—	Deck Extension Assembly, Butt End
3	21214012	1	12" Ramp Assembly
4	21213053 ^A	—	Deck Extension/Ramp Assembly
5	21213700 ^A	2	Hinge
6	21210600 ^A	2	Extension Pin
7	22110700	1	Hinge Pin
8	20216401	1	Lock Clevis
9	20216500	1	Retainer Pin
10	20216001	1	Lock
11	20216301	1	Ramp Hinge
12	26312200	2	Pin, 1.00x2.81
13	24211100	2	Pin
14	75089541	2	1/4 Dia. x 1-7/8" Coiled Pin
15	75088061	4	1" Washer
16	75084053	2	3/32 x 1" Cotter Pin
17	75088056	2	1/2" Flat Washer
18	75089544 ^A	2	3/8" Coiled Pin
19	21214300	1	Torsion Spring (Curb Side)
	21214350		Torsion Spring (Driver's Side)
20	20216700	1	Spring, Flat
21	20216710	1	Bar, Spring Mount
22	75086862	1	¼-20 x 3/8 Self-Tap Screw
23	20216600	1	Pin Retainer
24	75086215	2	Hex bolt, 1/4-20x2-1/2, Grade 8, Plated
25	75085175	2	Lock nut, 1/4-20, heavy hex plated

^A Included in Deck Extension / Ramp Assembly Replacement Kit 21215112

IMPORTANT:
Parts shown may not match your liftgate. See **PARTS NAVIGATOR** or contact Waltco Parts to confirm correct part numbers.



WALTCO
TRUCK EQUIPMENT CO.
FSL-20, FSL-30

REVISED: 8/17/09
E.O. 6268
REV. 01
PM-14B

ITEM	PART NUMBER	QTY	DESCRIPTION
1	25176100	2	Upstop
2	75085016 ^A	2	3/4"-10 Hex Nut
3	75086187 ^A	2	3/4"-10 x 4" Hex Head Screw
4	75088087 ^A	2	3/4" Lock Washer
5	75089541 ^C	12	1/4" Dia. x 1-7/8" Coiled Pin
6	20211200*	2	Upper Hinge Pin
7	75084055 ^C	2	5/32" Dia. x 2-1/2" Cotter Pin
8	10170500 ^C	1	Upper Cylinder Pin
9	20271501 ^C	1	Lower Cylinder Pin
10	21251003 ^A	1	Stop Block Assembly, Curb Side
	21251053 ^A	1	Stop Block Assembly, Driver's Side
11	24271000 ^B	2	Extension Spring Assembly
12	20270700*	2	Main Pin
13	20270800*	1	Alignment Pin
14	21220080	1	Mount Frame Assembly
15	21230080	1	Lift Arm Assembly
16	21250001	2	Parallel Arm Assembly Complete
17	25170100	2	Mount Plate (FSL-20 Only)
	25270100		Mount Plate (FSL-30 Only)
18	20270400	4	Extension Spring
19	20252200	2	Eye Bolt W/Nut
20	75085003	2	5/16"-18 Hex Nut
21	21270400 ^B	2	Equalizer Bar
22	75089360 ^B	4	"S" Hook
23	10193000	1	Latch Chain Assembly
24	10111700	1	Chain Clip
25	21235500	1	Nameplate Assembly
26	20397500	2	Snubber Bracket Assembly
27	20396000	2	Rubber Snubber Assembly
28	75085003	4	5/16"-18 Serrated Hex Nut
29	75090310 ^D	1	Grommet, Control Cord
30	75089334 ^D	1	Grommet, Battery Cable
31	75085005 ^D	1	Serrated Hex Nut, 3/8-16
32	75088052 ^D	1	Flat Washer, 5/16 SAE
33	27391301 ^D	1	Cover Latch

ITEM	PART NUMBER	QTY	DESCRIPTION
34	75086212 ^D	3	1/4"-20 x 1-1/4" lg. Bolt
35	75088079 ^D	3	1/4" Lock Washer
36	10090460 ^D	1	Pump Cover Gasket
37	70401408 ^D	1 or 2	Grommet for 7/16" JIC fitting
38	70401409 ^D	1	Grommet for 1/4" hose stem fitting
39	10090450 ^D	1	Pump Cover (with latch)
40	See individual Parts Manual Sheets for Power Unit Information.		

^A Included in Stop Block Replacement Kit 80000930.

^B Included in Bar and Spring Replacement Kit 80000935.

^C Included in Cylinder Replacement Kit 20295401.

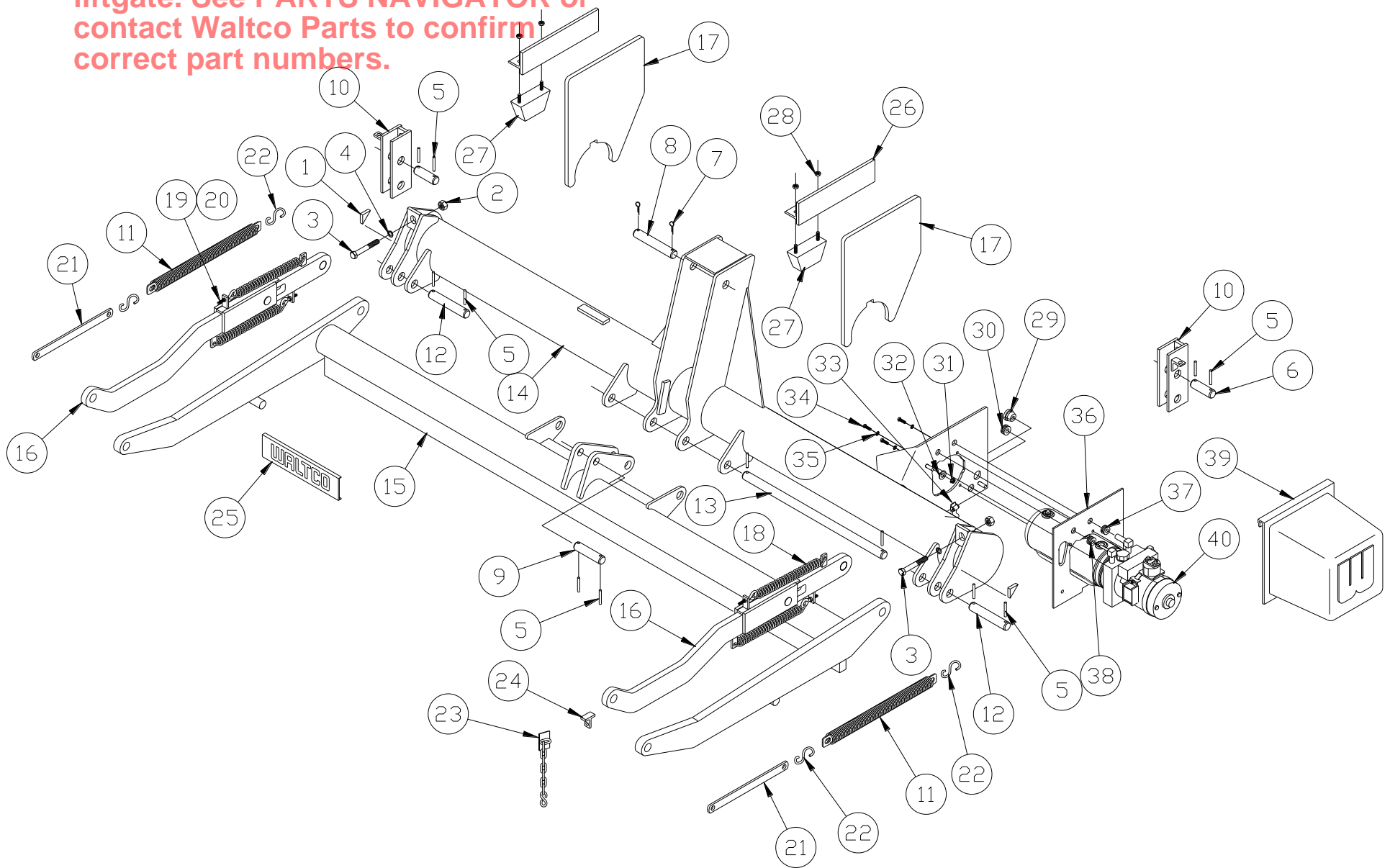
^D These parts and the Hydraulic Pump Unit shown are only used on liftgates built after 7-04.

WALTCO
TRUCK EQUIPMENT CO.
FSL-20, FSL-30

REVISED: 2-1-06
E.O. 5221G
REV. 13

PM-19

IMPORTANT:
 Parts shown may not match your
 liftgate. See **PARTS NAVIGATOR** or
 contact Waltco Parts to confirm
 correct part numbers.



WALTCO
 TRUCK EQUIPMENT CO.
 FSL-20, FSL-30

REVISED: 2-1-06
 E.O. 5221G
 REV. 13

PM-19

IMPORTANT:

Parts shown may not match your rig. See PARTS NAVIGATOR or contact Waltco Parts to confirm correct part numbers.

ITEM	PART NUMBER	QTY	DESCRIPTION
1	21260001	1	Bed Extension - 96"
	21260002		Bed Extension - 102"
	21560001		Bed Extension - 96" (FSL-50 Only)
2	21298400 ☒	2	Dock Bumper Brace
	21598400 ◇		Dock Bumper Brace (FSL-50 Only)
3	20297100 ☒	2	Dock Bumper
	21597000 ◇		Dock Bumper (FSL-50 Only)

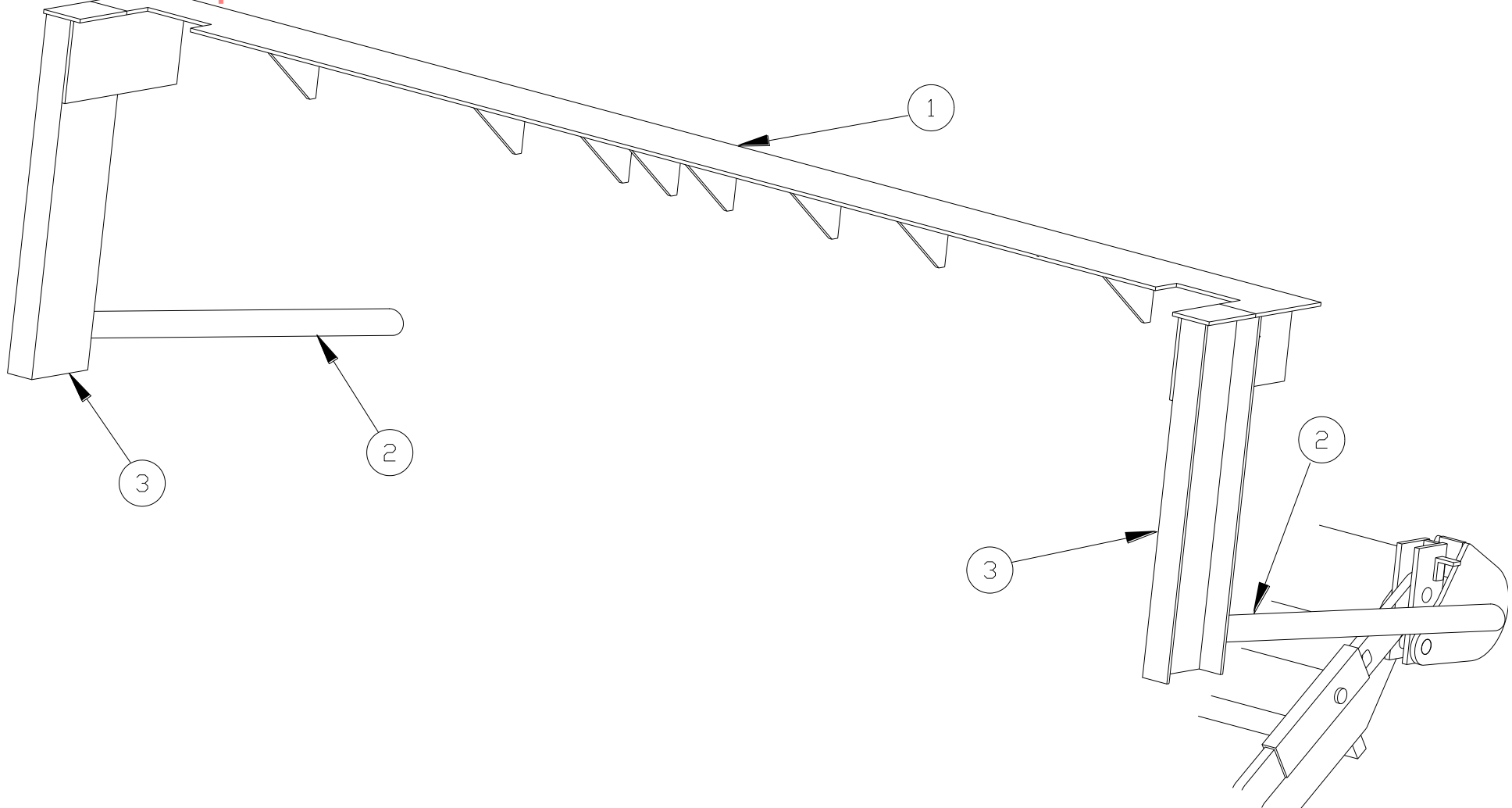
- ☒ Dock Bumper Kit 21296000 (Option)
◇ Dock Bumper Kit 21596000 (Option) (FSL-50 Only)

WALTCO
TRUCK EQUIPMENT CO.
FSL SERIES

REVISED: 2-16-01
E.O. 4293
REV. 03

PM-418

IMPORTANT:
Parts shown may not match your liftgate. See PARTS NAVIGATOR or contact Waltco Parts to confirm correct part numbers.



WALTCO
TRUCK EQUIPMENT CO.
FSL SERIES

REVISED: 2-16-01
E.O. 4293
REV. 03

PM-418

ITEM	PART NUMBER	QTY	DESCRIPTION
1	70430320	1	Hydraulic Pump Unit
A	70400001 ^C	1	Hydraulic Reservoir
B	70400004 ^{B,C}	1	Breather
C	7043001-1 ^{A,B,C}	1	Motor
D	75089833 ^{A,B,C}	1	Starter Solenoid
E	70401476 ^{B,C}	1	Valve Assembly, 2-way, 2 position
G	75089854 ^{B,C}	1	15 amp Fuse
H	10099309 ^{B,C}	1	Inline Fuse Assembly (Includes Fuse 75089853)
J	75089834 ^{A,B,C}	1	Bus Bar
K	10098425 ^C	1	Ground Cable
2	75083202	1	Hose, 1/4" I.D. x 1/4" JIC x 3/8 JIC
3	75083036	1	90° Elbow, 3/8" NPT
4	20280010 ^B	1	Hydraulic Cylinder
5	75082741 ^B	1	Barbed Fitting, 1/8" NPTF x 1/4" Straight
6	26299500 ^B	1	Hose, 1/4" I.D.
7	70401408	1	7/16" I.D. Grommet
8	70401409	1	1/4" I.D. Grommet
9	70091291	1	Steel Plug
10	70110020	1	Pressure Compensated Valve (2.75 gpm)
11	7500102-2	1	Male Connector

^A Included in Motor Assembly 70400854.

^B Included in Cylinder Replacement Kit 20295401.

^C Included in Pump Assembly 70430320.

Note:

70430320 replaces previous pumps 70401900 and 70401950.

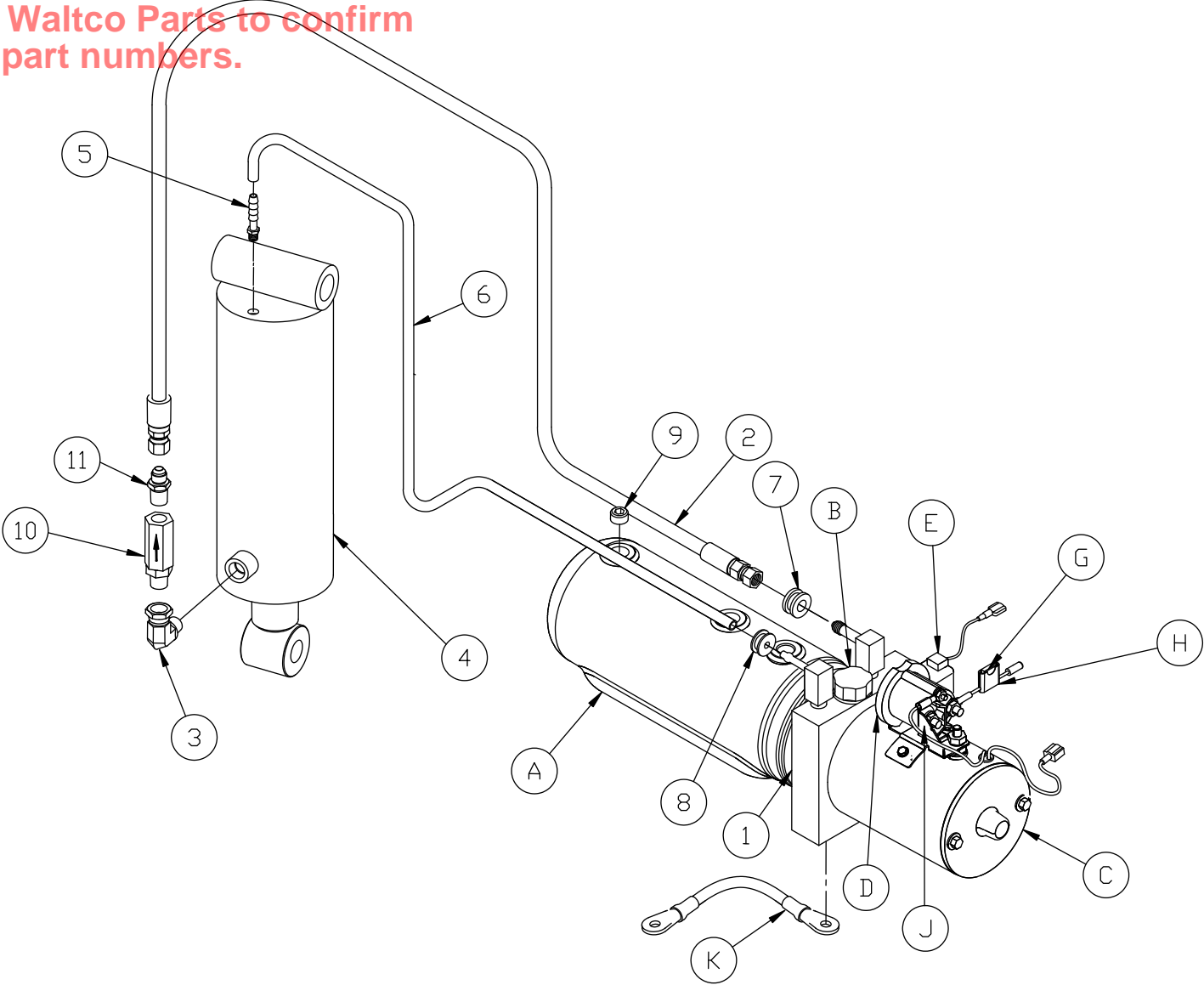
7043001-1 motor replaces previous motor 70092312.

WALTCO
TRUCK EQUIPMENT CO.
FSL-25, FSL-30 SERIES

REVISED: 6-4-10
E.O. 6403
REV. 01

PM-619A

IMPORTANT:
Parts shown may not match your liftgate. See **PARTS NAVIGATOR** or contact Waltco Parts to confirm correct part numbers.



WALTCO
TRUCK EQUIPMENT CO.
FSL-25, FSL-30 SERIES

REVISED: 6-4-10
E.O. 6403
REV. 01

PM-619A

ITEM	PART NUMBER	QTY	DESCRIPTION
1	70430430	1	Hydraulic Pump Unit
A	70400001 ^B	1	Hydraulic Reservoir
B	70400004 ^B	1	Breather
C	70430011 ^{A,B}	1	Motor
D	75089833 ^{A,B}	1	Starter Solenoid
E	70401476 ^B	1	Valve Assembly, 2-way, 2 position
F	70401477 ^B	1	Valve assembly, 4-way, 2 position
G	10099312 ^{A,B}	1	Power Down Module
J	75089854 ^B	1	15 Amp Fuse
K	10099309 ^B	1	Inline Fuse Assembly (Includes Fuse 75089853)
L	75089834 ^{A,B}	1	Bus Bar
M	10098425 ^B	1	Grounding Cable
2	75083200	1	Hose, 1/4" I.D. x 1/4" JIC x 1/4 JIC, 45"
3	75083202	1	Hose, 1/4" I.D. x 1/4" JIC x 3/8 JIC, 45"
4	75083036	1	90° Elbow, 3/8" NPT
5	75082965	1	45° Elbow, 1/4" JIC x 1/4" JIC Swivel
6	20280022	1	Hydraulic Cylinder and Adapter
7	70401408	2	7/16" I.D. Grommet
8	70091291	1	Steel Plug
9	7500102-2	1	Male Connector
10	70110020	1	Pressure Compensated Valve (2.75 gpm)

^A Included in Motor Assembly 70400855.

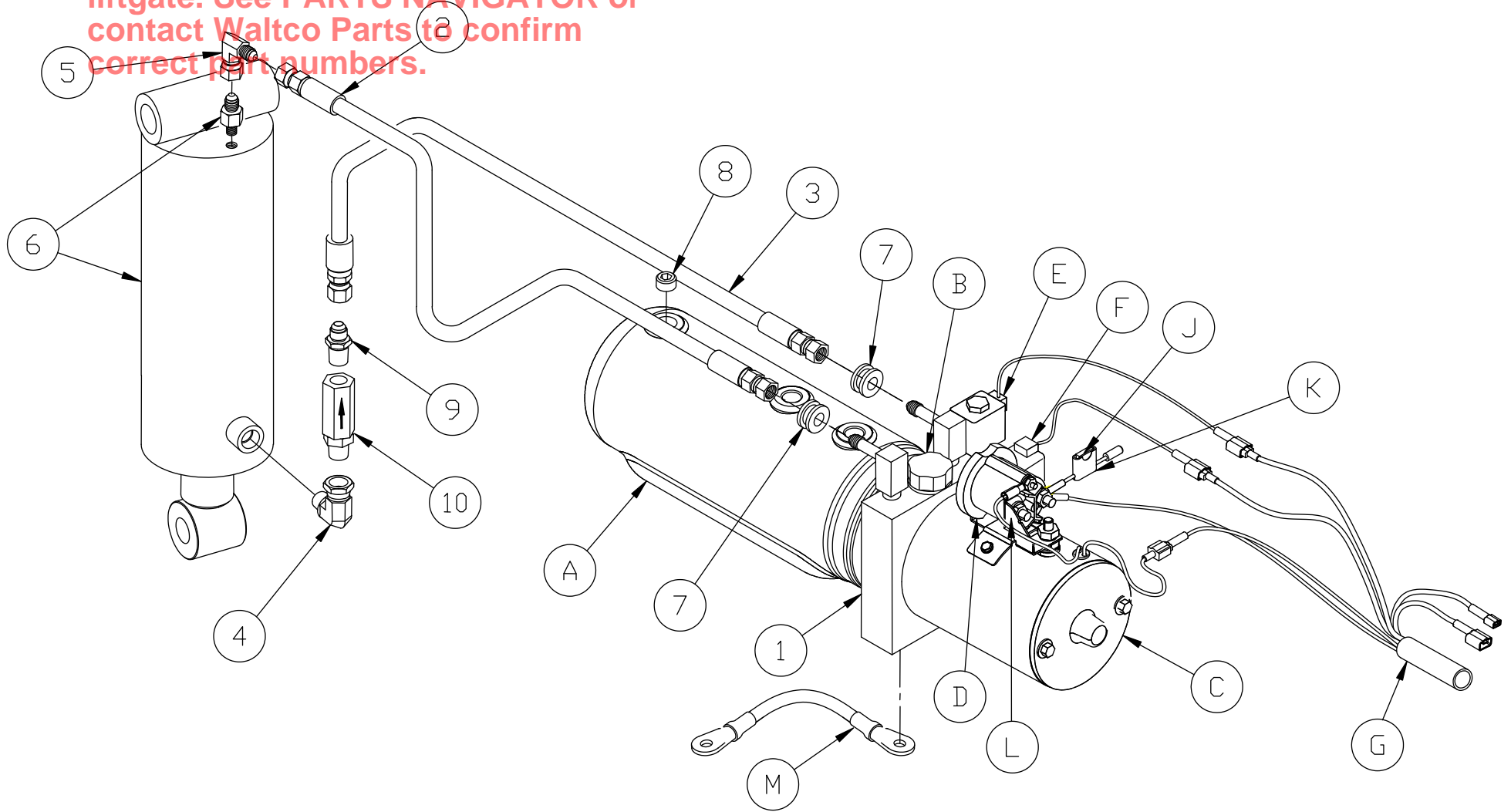
^B Included in Pump Assembly 70430430.

WALTCO
TRUCK EQUIPMENT CO.
FSL-25, FSL-30 SERIES

REVISED: 6-4-10
E.O. 6403
REV. 01

PM-620A

IMPORTANT:
Parts shown may not match your liftgate. See **PARTS NAVIGATOR** or contact Waltco Parts to confirm correct part numbers.



WALTCO
TRUCK EQUIPMENT CO.
FSL-25, FSL-30 SERIES

REVISED: 6-4-10
E.O. 6403
REV. 01

PM-620A

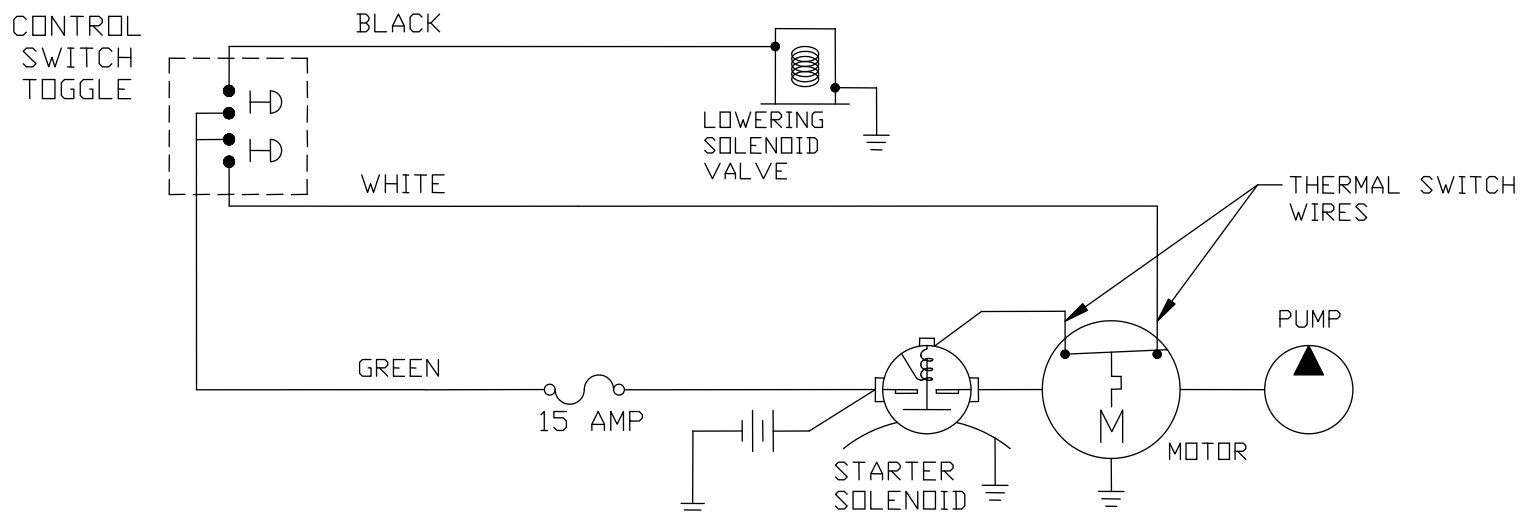
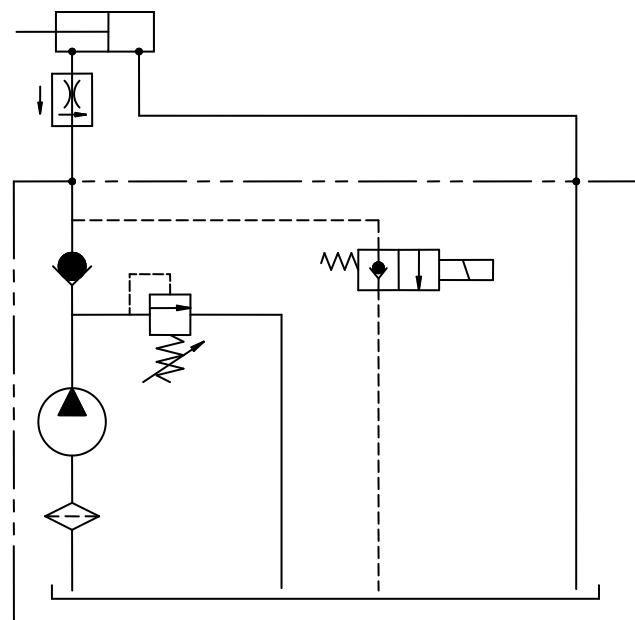
ELECTRIC CONTROL OPTIONS – GRAVITY DOWN

IMPORTANT:
Parts shown may not match your liftgate. See PARTS NAVIGATOR or contact Walco Parts to confirm correct part numbers.

	PART NUMBER	QTY	DESCRIPTION
1	10099322 ^a	1	Switch w/10ft Cord (for curb side)
	10099323 ^b	1	Switch w/15ft Cord (for Dual Control)
2	10099325 ^c	1	Switch (Hand Held Remote)
3	75082038	1	Trailer Socket
4	75082037	1	Trailer Plug
5	75089854	1	15 Amp Fuse
6	75089850	1	Fuse Holder
7	10098413	1	Dual Control Harness

^a Included in Switch Kit 80000428.

^b Included in Switch Dual Control Kit 80000434.



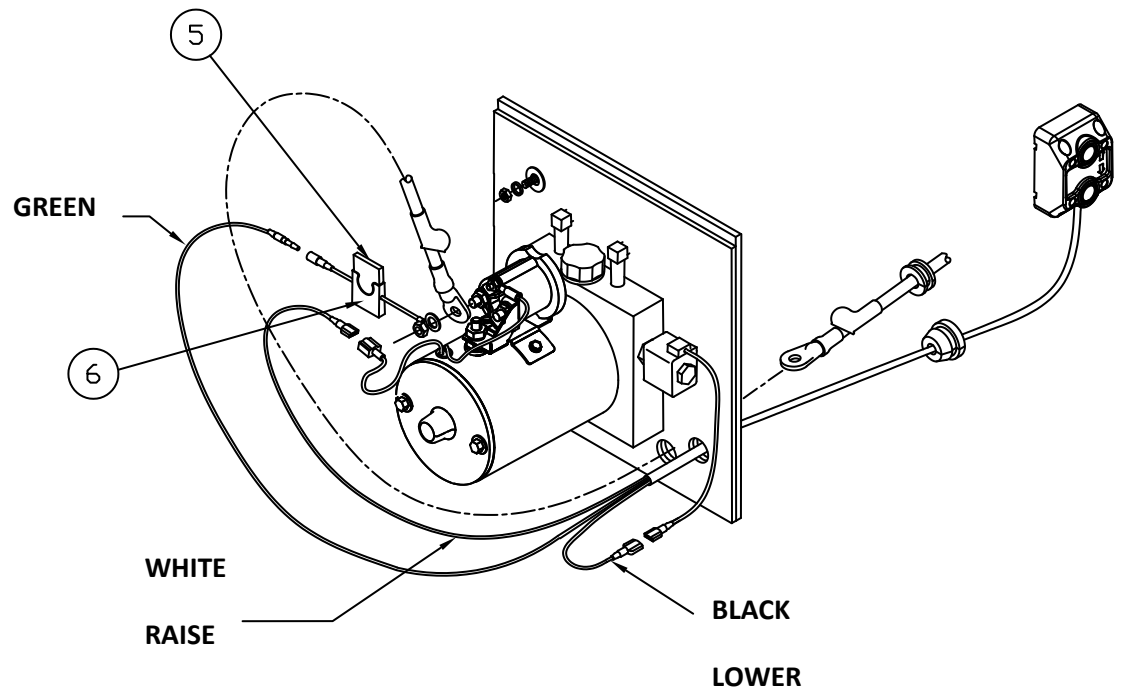
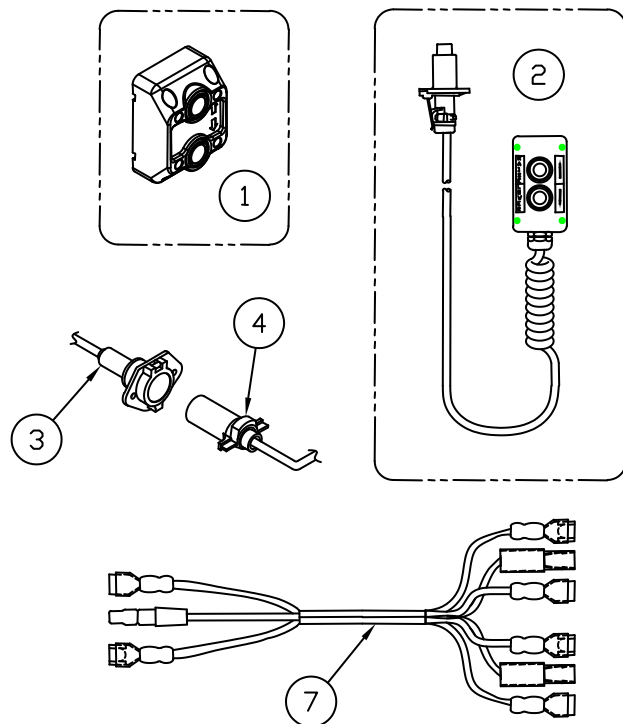
WALTCO
TRUCK EQUIPMENT CO.

REVISED: 12-17-09
E.O. 6339
REV. 02

PM-617B

IMPORTANT

Parts shown may not match your liftgate. See PARTS NAVIGATOR or contact Waltco Parts to confirm correct part numbers.



WALTCO
TRUCK EQUIPMENT CO.

REVISED: 12-17-09
E.O. 6339
REV. 02

PM-617B

ELECTRIC CONTROL OPTIONS – POWER DOWN

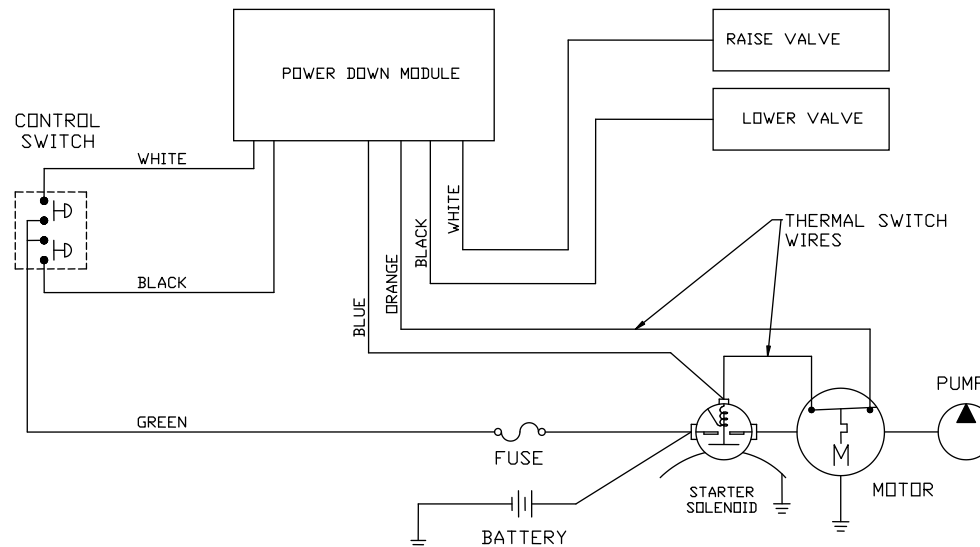
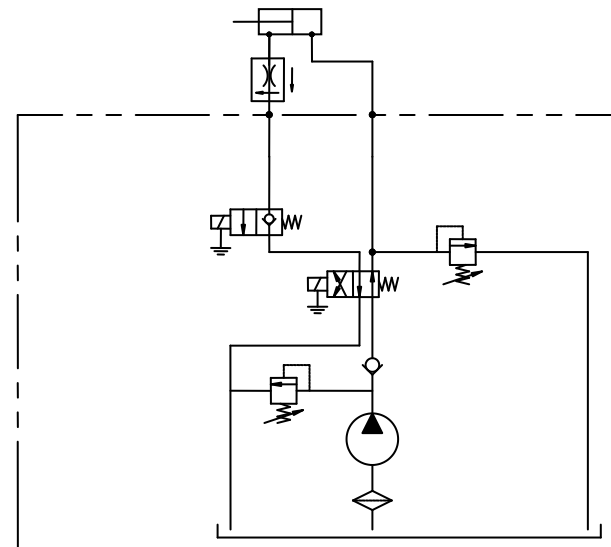
IMPORTANT:
Parts shown may not match your
rig. See PARTS NAVIGATOR or
contact Waltco Parts to confirm
correct part numbers.

ITEM	PART NUMBER	QTY	DESCRIPTION
1	10099322 ^a	1	Switch w/10ft Cord (for curb side)
	10099323 ^b	1	Switch w/15ft Cord (for Dual Control)
2	10099325 ^c	1	Switch (Hand Held Remote)
3	75082038	1	Trailer Socket
4	75082037	1	Trailer Plug
5	75089854	1	15 Amp Fuse
6	10099309	1	Fuse Holder
7	10098413	1	Dual Control Harness

^a Included in Switch™ Kit 80000428.

^b Included in Switch™ Dual Control Kit 80000434.

^c Included in Switch™ Hand Held Remote Kit 80000430.



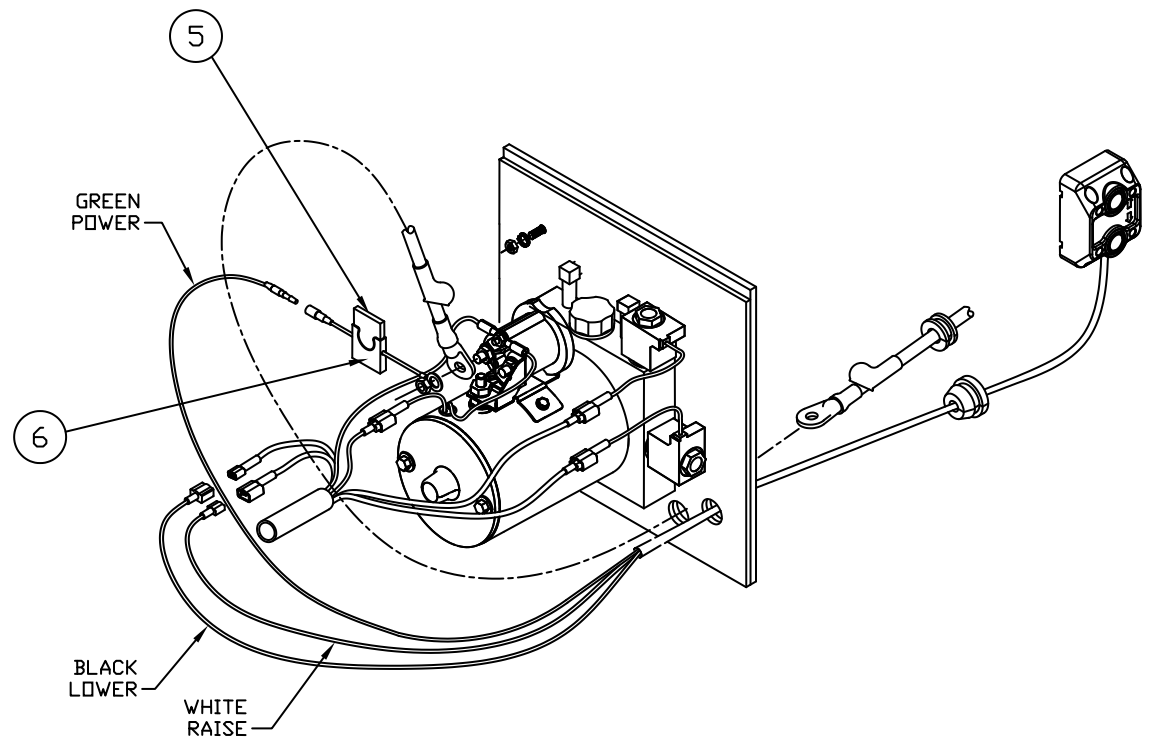
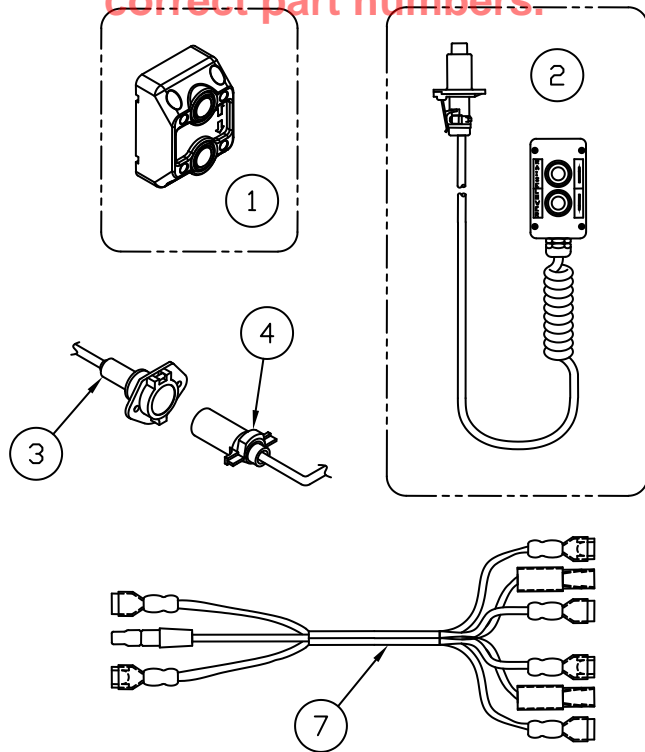
WALTCO
TRUCK EQUIPMENT CO.

REVISED: 12-17-09
E.O. 6339
REV. 02

PM-618C

ELECTRIC CONTROL OPTIONS – POWER DOWN

IMPORTANT:
Parts shown may not match your
liftgate. See PARTS NAVIGATOR or
contact Waltco Parts to confirm
correct part numbers.



WALTCO
TRUCK EQUIPMENT CO.

REVISED: 12-17-09
E.O. 6339
REV. 02

PM-618C

Chapter 8 How To Order Parts

Repairs should be made only by authorized mechanics using WALTCO Replacement parts.

When ordering repair or replacement parts, please include all the information asked for below. If this information is not available, a complete written description or sketch of the required part will help WALTCO identify and deliver the needed part to you.

THE FOLLOWING INFORMATION MUST BE INCLUDED:

1. SERIAL NUMBER - [WALTCO liftgate serial numbers can be found on the Specification Tag attached to the mount frame. (On older units the Specification Tag is located on the side or bottom of the platform.)]
2. MODEL NUMBER - [Or capacity]
3. PLATFORM SIZE

THEN INCLUDE THE FOLLOWING INFORMATION:

4. PART NUMBERS
5. DESCRIPTION
6. QUANTITY REQUIRED

MAIL, E-MAIL OR PHONE YOUR REQUEST TO:

Waltco Truck Equipment Co.
285 Northeast Avenue
Tallmadge, OH 44278
1-800-411-5685
FAX: 1-800-411-5684
E-MAIL: parts@waltco.com

ALL PARTS ARE F.O.B. FROM THE SHIPPING FACTORY

PLEASE NOTE:

To assure you of continuing and effective quality control, our warranty policy permits replacement of hydraulic cylinders, valves and motor pump units when their factory seals are intact. Parts under warranty will be exchanged promptly after careful inspection of the returned assemblies.



Every vehicle that has a WALTCO Liftgate must have legible **WARNING AND OPERATION DECALS** clearly posted on the vehicle and an **OWNER'S MANUAL** in the vehicle at all times as a guide for proper operation and maintenance.

Additional WARNING DECALS, OPERATION DECALS and OWNER'S MANUALS can be obtained from WALTCO TRUCK EQUIPMENT COMPANY.

NOTE:

**When ordering, give model
and serial number of the liftgate.**

IMPORTANT

KEEP THIS OWNER'S MANUAL IN THE VEHICLE

WARNING

Improper operation and maintenance of this liftgate could result in severe personal injury or death.

Read and understand the contents of this manual and all warning and operation decals before operating and/or performing maintenance on this liftgate.

**For SAFETY information on this liftgate see
Chapter 1 of this manual**