



GT-33/44

Visit us at www.waltco.com

Owners Manual

3300 and 4400 lb. Capacity Sliding Liftgate

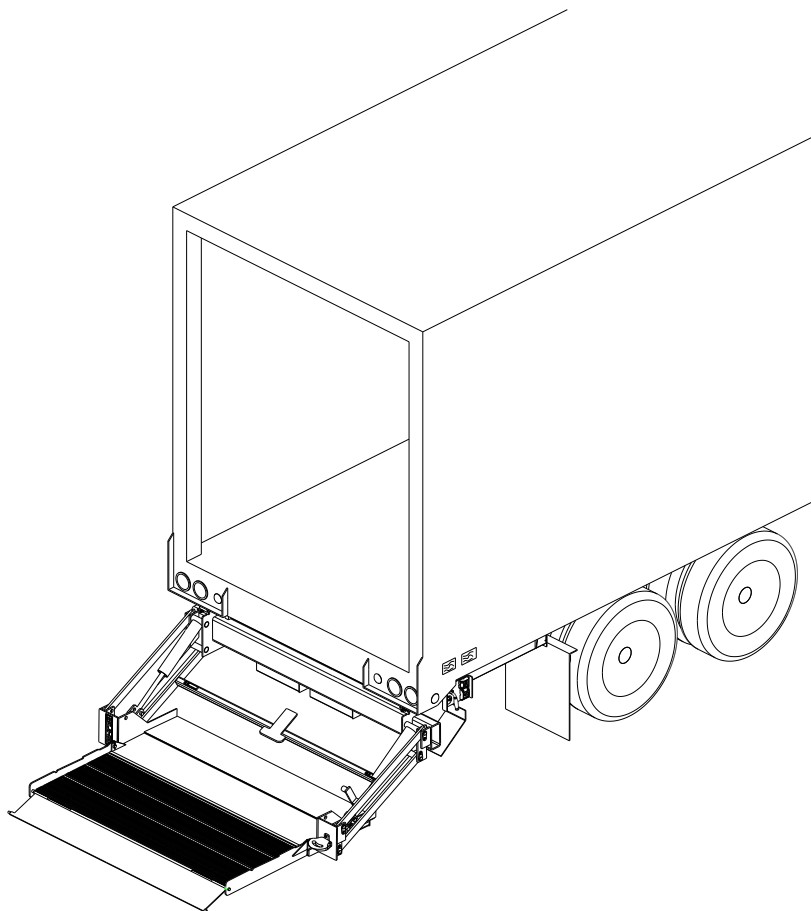
IMPORTANT

KEEP IN VEHICLE

WARNING

Improper operation and maintenance of this liftgate could result in severe personal injury or death.

Read and understand the contents of this manual and all warning and operation decals before operating and/or performing maintenance on this liftgate.



2-2010
EO 6357 REV 07

GR01403
80127502

OHIO

285 Northeast Avenue
Tallmadge, OH 44278
(330) 633-9191
FAX – (330) 633-1418

This page intentionally left blank.

Table of Contents

	Chapter
INTRODUCTION	
SAFETY INFORMATION	1
LIFTGATE TERMINOLOGY	2
OPERATION	3
INSPECTION	4
PLACEMENT OF DECALS	5
LUBRICATION INSTRUCTIONS	6
SCHEMATICS.....	7
HOW TO ORDER PARTS	8

INTRODUCTION

If anyone observes improper installation, improper operation, or damage, they should immediately contact a qualified person for assistance and correction. We strongly urge anyone that has any questions or doubts as to the installation, condition, use, operation, maintenance or repair of the liftgate to contact us at Waltco where we have qualified personnel that will be happy to assist you. Telephone numbers and addresses of these locations are listed in the Owner's Manual and Installation Instructions.

INSTALLATION

Waltco liftgates should only be installed by those with sufficient basic skills to understand the installation and operation of the liftgate, along with the equipment on which the liftgate is being installed. Waltco's installation instructions are not intended to give rationale for all the instructions that are given; however, it is the intent of these instructions to give the installer both the operations and what we believe to be the most desirable sequence of implementing these operations. These instructions can in no way expand into an area where they will replace a qualified person, or clear thinking and a basic knowledge that must be possessed by the installer.

It has been our experience that a knowledgeable journeyman following these instructions and observing the operation of the liftgate will have a sufficient comprehension of the liftgate to enable this person to troubleshoot and correct all normal problems that may be encountered.

Failure to follow the installation instructions, adjustments and mounting dimensions may result in improper and unsafe operation of the liftgate. Unauthorized alterations of the liftgate can cause an undesirable and dangerous condition.

OWNER'S MANUAL

The Waltco Owner's Manual is intended to act as a guide for operation and routine maintenance but is no way intended to encourage usage or repair of the liftgate by those who are not qualified to do so.

The contents of the owner's manual include, but are not limited to general operation instructions, routine lubrication, parts lists, and an outline of things that should be checked but may not be obvious to those not technically qualified. This manual assumes the liftgate is properly installed, undamaged and operates correctly. Improper installation, improper operation, or damage should be immediately corrected by a qualified person.

INSPECTION

As part of the regular inspection of a liftgate and after damage or suspicion of an overload, inspect for wear or structural damage and make necessary repairs or replacements. Check all structural components and their attachment to the liftgate for cracked welds, loose fasteners, wear and part deformation. Check cylinder and hose for leaks. Inspections and repairs should be made by a qualified mechanic.

REPLACEMENT PARTS

Use only Waltco original equipment replacement parts. Components of other liftgate manufacturers may outwardly appear to be the same but are not interchangeable with Waltco products. Waltco components are specifically designed for safety requirements, reliability and compatibility with our products. Refer to your Waltco parts manual when ordering parts. NOTE: When ordering, give model and serial number of liftgate.

DECALS

It is important that every vehicle that has a WALTCO Liftgate have legible DECALS clearly posted on the vehicle and an OWNER'S MANUAL in the vehicle at all times as a guide for proper operation and maintenance.

Additional DECALS and OWNER'S MANUALS can be obtained from WALTCO TRUCK EQUIPMENT COMPANY

80101388 Rev 02 EO 6156

Chapter 1 Safety Information

WARNING

Read, understand, and follow all of the warning listed below.

Failure to follow these warning could result in severe personal injury or death.

- Read and understand the Owner's Manual, all decals and warning on liftgate before operating liftgate.
- Do not operate liftgate without a thorough knowledge and understanding of the operation of the liftgate.
- Liftgate hazards can result in crushing or falling.
- This liftgate is designed for loading and unloading of cargo. If personnel are required to ride liftgate, observe and familiarize yourself with the liftgate operation, decals and manuals. Ensure stable footing at all times.
- Do not ride liftgate with unstable loads.
- Wheeled loads must be properly retained from rolling.
- Tall, high center of gravity loads must be retained from falling over.
- Never overload liftgate.
Refer to the Explanation of Specification Tag in the Liftgate Terminology chapter for liftgate capacity rating.
- Keep hands and feet clear of all potential pinch points.
- Never use liftgate if it makes any unusual noise, has unusual vibration, raises or lowers unevenly, or fails to operate smoothly.
- Never use liftgate if it shows any signs of structural damage such as cracked welds, bent or distorted members.
- Do not attempt any repairs unless you are qualified to do so. Care should be taken when work is performed on a disabled liftgate located near moving traffic. When possible the vehicle should be moved away from traffic areas for repair. Precautionary measures should be taken to ensure personal safety including those recommended in Federal Motor Vehicle Safety Standards 571.125.
- All protective covers, guards, and safety devices must be in place and access doors closed before operating liftgate.
- Do not allow anyone to stand in, or near area, in which Platform will open and close before opening or closing Platform.
- Do not allow anyone to stand near the Platform where a falling load could land on them.
- Platform is always to be properly stored and secured for transit. See the Owner's Manual for details.
- Take care to retain cargo during transit for liftgate Platforms which function as the tailgate or door of the cargo area. Small objects can fall through the space between the vehicle and the folded Platform.
- A Lock-Out device or Shut-Off Switch should always be used to prevent unauthorized use of liftgate.
- For liftgates with Runners, never use liftgate if Runners do not travel freely and smoothly.
- For liftgates with Roller Lifting Chain, the Chain should be replaced every (5) five years or 15,000 cycles, whichever comes first. Replace only with Waltco approved Roller Chain.
- Never transfer loads which exceed lifting capacity on or over any part of the Platform unless the liftgate is equipped with a special reinforced Platform and Platform Support Bars for use when the Platform is used as loading ramp (dock board). Refer to the "Using Platform as a loading ramp" Chapter in the Operation Instructions of the BZ/RZ series Owner's Manual.
- For liftgates equipped with Trailer Hitches, never exceed the rated capacity of the hitch. Do not exceed the vehicle's weight rating. Refer to the vehicle's Owner's Manual.
- Vehicle must comply with all state and federal standards.
- Follow the "Maintenance Guide" chapter in the Owner's Manual.

Chapter 1 Safety Information

Liftgates with Tilt Function

- Proper use of the Control Switches is of extreme importance.
- Improper use of Tilt Switch could cause load to fall from the Platform or damage the liftgate.
- Platform should be in a generally horizontal position when raising or lowering with a load.
- In any tilt position, the Platform may vary from level while raising or lowering the Platform.

Liftgates equipped with spring operated Cam Closer

- Replace Cam Release Spring every five (5) years or 15,000 cycles, whichever comes first.

RGL-Series Liftgates

- Make certain Platform Brake mechanisms are operating properly.
- The Runners are always to remain powered up against the Upstops Pins when in transit.
- Inspect Cables every three (3) months or 750 cycles, whichever comes first. Cables must be replaced if they show signs of wear, distortion, kinking or if any broken wires are visible
- Replace cables every five (5) years or 10,000 cycles, whichever comes first.



This is the safety alert symbol. This manual uses this symbol to alert you to potential personal injury hazards.

Obey all safety messages that follow this symbol to avoid personal injury or death.

SIGNAL WORDS

WARNING

Indicates a potentially hazardous situation, which if not avoided, could result in death or serious injury.

Black letters on an orange background

CAUTION

Indicates a potentially hazardous situation, which if not avoided, may result in minor or moderate injury. May also be used to alert against unsafe practices.

Black letters on a yellow background.

NOTICE

Indicates a potentially hazardous situation, which if not avoided, may result in property damage.

 **WARNING** **CAUTION*****NOTICE***

WALTCO Warranty Policy

WALTCO warrants its products free of defects in materials and workmanship.

WALTCO will replace components found defective during the warranty period. Labor will be reimbursed according to our flat rate labor schedule at the prevailing shop rate.

Contact our Sales or Warranty departments for the warranty period of your model or for information regarding our flat rate labor schedule.

WALTCO Warranty Claim Procedure

For consideration, all claims must be received within 30 days of repair and include the following information:

- Liftgate Serial Number
- Description of problem and corrective actions
- Itemization of the labor charge to include the number of hours and labor rate

Replacement warranty parts can be obtained by contacting Waltco's Parts Department. Parts must be returned for inspection when requested.

Exclusions:

Waltco's warranty does not include reimbursement for service calls, vehicle rental, towing, travel time, fabrication of parts available from WALTCO, damage from misuse or abuse, negligence, accidents, alteration, loss of income or overtime expense, oil, or normal wear.

Diagnosis and troubleshooting time are included in the flat rate labor times.

Warranty and technical information is available from WALTCO's toll free customer service lines from 8:00 a.m. to 5:00 p.m. EST.

Waltco Truck Equipment Co.

285 Northeast Ave, Box 354, Tallmadge, OH 44278

1-800-211-3074, 330-633-9191

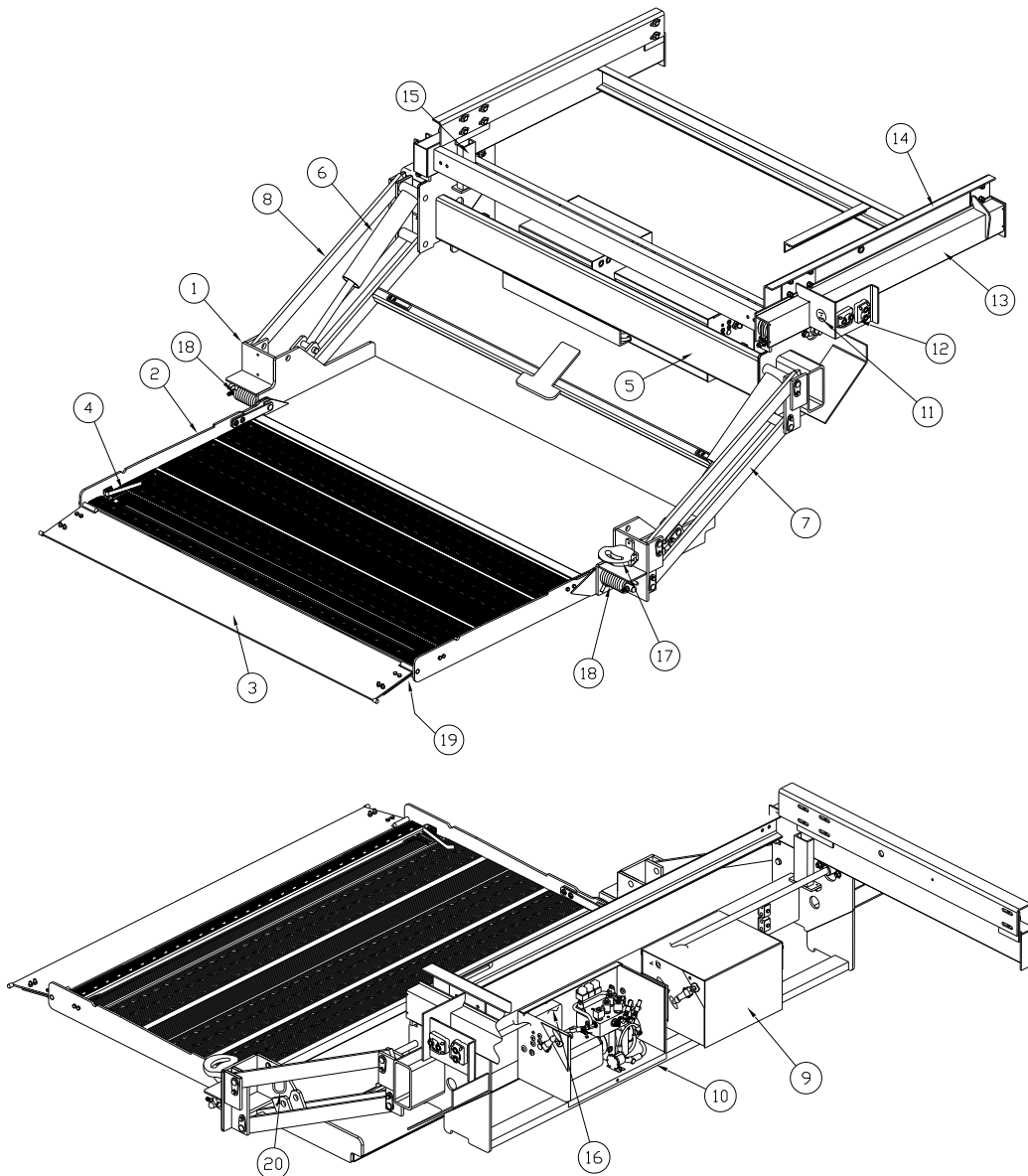
Please visit our websites: <http://www.waltco.com> or <http://www.hiab.com>

We're behind you all the way!

This page intentionally left blank.

Chapter 2 Liftgate Terminology

- | | |
|-------------------------|--------------------------------|
| 1. Deck | 11. Identification tag |
| 2. Deck extension | 12. Switches |
| 3. Loading ramp | 13. Slide tube |
| 4. Cart stop (optional) | 14. Mount angles |
| 5. Mount tube | 15. Up-stops |
| 6. Lift cylinder | 16. Charging module (optional) |
| 7. Lift arm | 17. Platform step |
| 8. Parallel arm | 18. Torsion assistance |
| 9. Battery box | 19. Platform handle |
| 10. Pump unit box | 20. Latch Chain Bail |



GR02683 & GR02684

Chapter 2 Liftgate Terminology

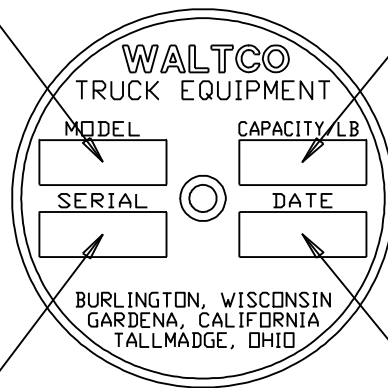
EXPLANATION OF SPECIFICATION TAG

MODEL NO.	DESCRIPTION	CAPACITY
GT33	GT-33 SLIDER LIFTGATE	3300 LBS.
GT44	GT-44 SLIDER LIFTGATE	4400 LBS.

MODEL NUMBER

RATED CAPACITY

Based on an evenly distributed load on the platform flat surface



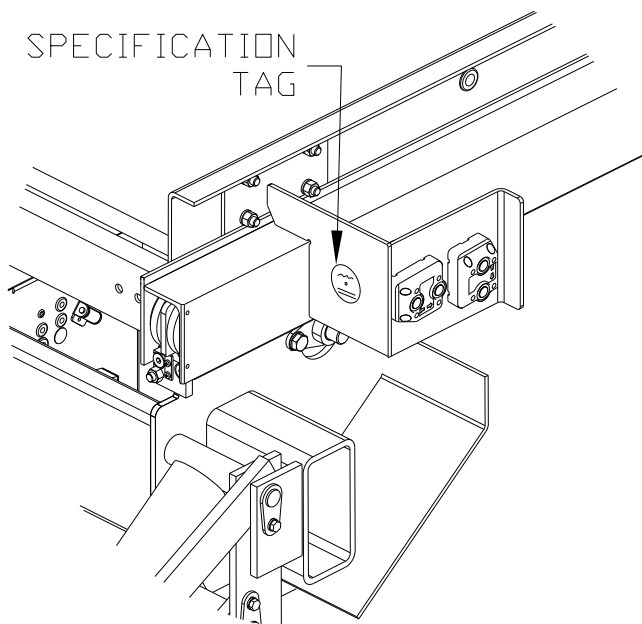
SERIAL NUMBER

of Liftgate. To be used when ordering parts or when contacting Walco for service or warranty.

DATE OF MANUFACTURE
MONTH/YEAR

GR02685

SPECIFICATION TAG



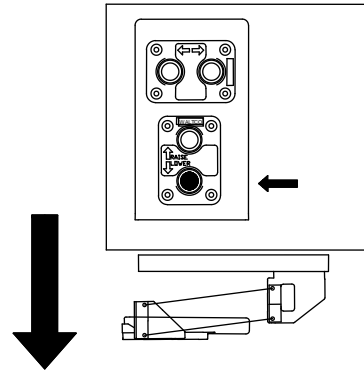
Chapter 3 Operations Instructions

OPEN PLATFORM

! Always make certain area in which Platform will open is clear.

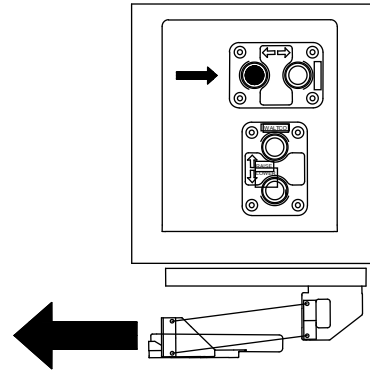
Unhook Latch Chain from curb side Parallel Arm.
Push Lower Switch to lower Platform from storage position.

Do not lower Platform to ground level, lower just enough to clear Storage Stops.



GR02590

Push Open Switch to move Platform to working position.

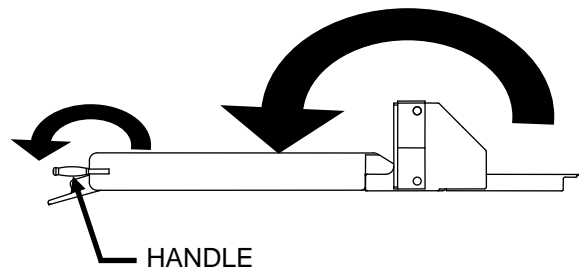


GR02591

Lower Platform to ground.

Open Platform Extension and Loading Ramps manually.

Note! Use handle to open Platform Extension.



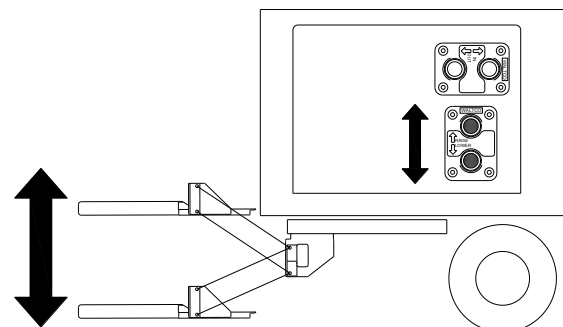
GR01233

TO RAISE AND LOWER PLATFORM IN WORKING POSITION

Push Raise Switch to raise platform.

Or

Push Lower Switch to lower platform.



GR02444

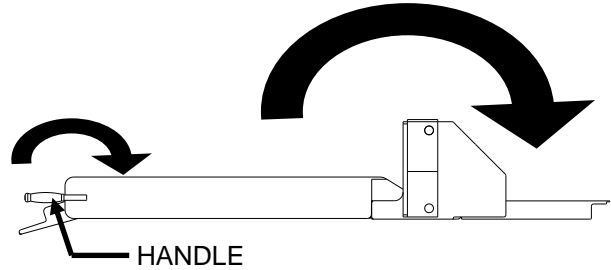
Chapter 3 Operations Instructions

CLOSING PLATFORM

Lower Platform to ground.

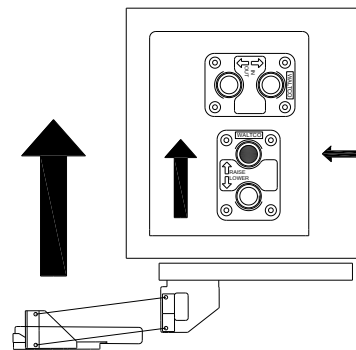
Close Loading Ramps manually.
Close Platform Extension manually.

Note! Use handle to close platform extension.



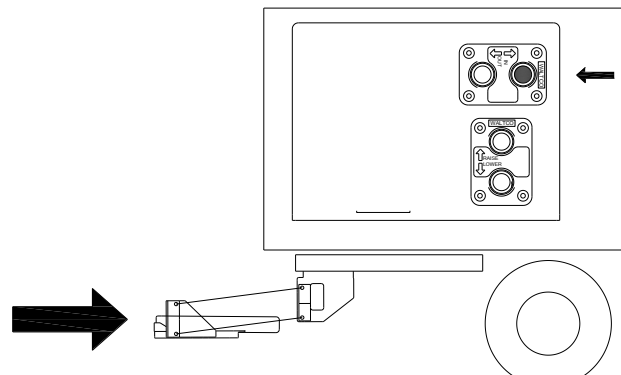
GR01233

Push Up Switch to raise Platform just above the ground.



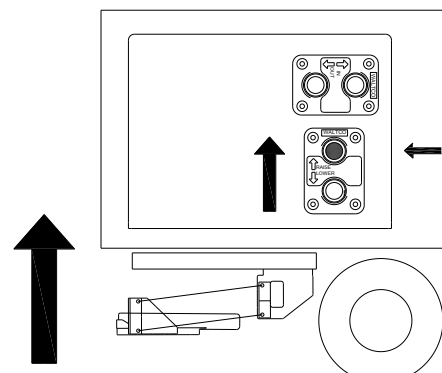
GR02622

Push In Switch to move Platform under Trailer.



GR02445

Push raise switch to raise platform to stored position.



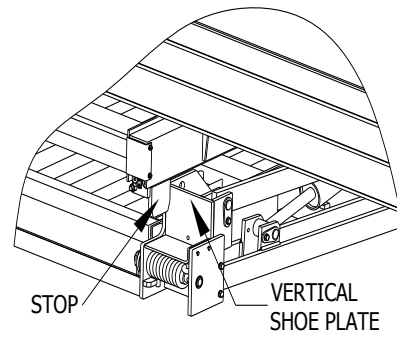
GR02446

Chapter 3 Operations Instructions

MAKE SURE LIFTGATE IS SECURED

Check to ensure Vertical Shoe Plate is behind Stop.

NOTE: Hole in Stop is for padlock provision. Place padlock in hole to lockout liftgate.

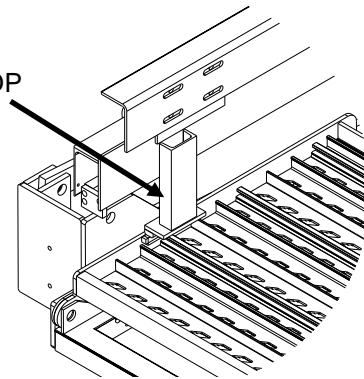


GR02631



Power liftgate up against up-stops.

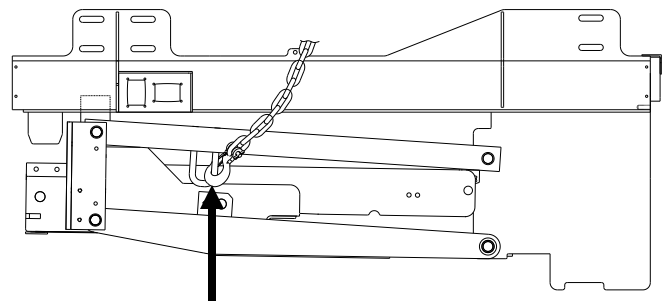
UP-STOP



GR01409



Attach Latch Hook on Safety Chain to Loop on Gate



LATCH HOOK

GR02686

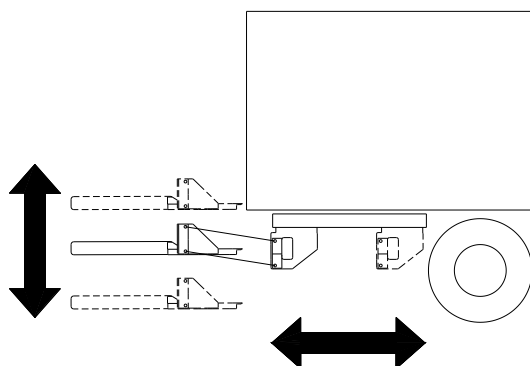
This page intentionally left blank.

Chapter 4 Inspection

MONTHLY INSPECTION

Operate the liftgate throughout its entire operational cycles and check for the following:

- Apparent damage to the lifting structure, such as bent or distorted members.
- Cracked welds, which may have resulted from overloading or abuse.
- Check that the liftgate operates freely and smoothly, and that there are no unusual noises or vibrations.



GR01242

Inspect for oil leaks in:

- Hydraulic cylinders
- Hydraulic hoses. Replace hoses if they show signs of excessive abrasion.
- Hydraulic fittings and valves.

Tighten or replace all hydraulic components as may be required to stop oil leakage.

Inspect all hydraulic components

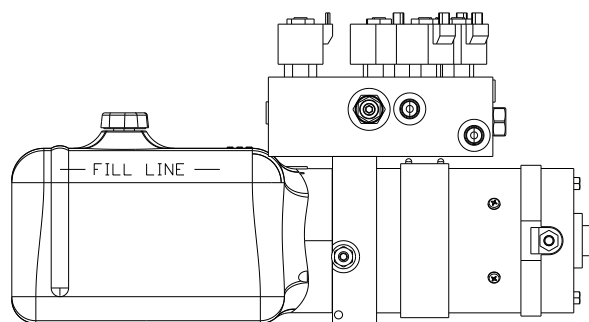
CHECK OIL LEVEL

Lower platform to the ground.

Oil level should be within 1/2" to fill line (over or above) marked on the side of oil tank.

Fill as may be required

Follow oil recommendations.



GR01243

Recommended Fluids

Temperature Range	Acceptable Fluids
32 to 150° F	Exxon Univis J-26 Mobil DTE 13 Chevron AW 32 Shell Tellus 23
-10 to 110° F	Exxon Univis J-13 Mobil DTE 11
-40 to 80° F	Mobil DTE 11 MIL-H-5606

A good quality SAE 10W motor oil may also be used

Fill reservoir

- Fill with recommended fluid or equivalent.
- With the platform on the ground, fill the reservoir to within 1/2" from the top.

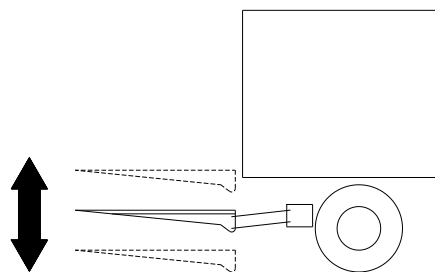
IMPORTANT
Do not use brake fluid

Chapter 4 Inspection

BLEEDING CYLINDERS

Lift cylinders:

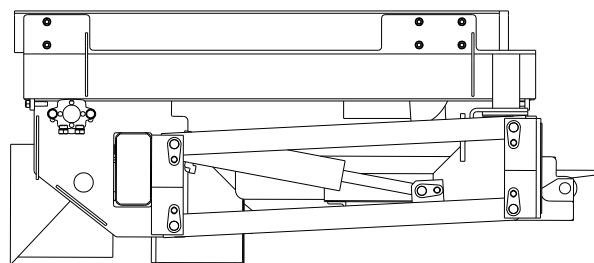
Fully lower platform a few times. You may have to jack up vehicle to fully extend lift cylinders.



GR01073

SLIDE SYSTEM

If needed wash chains with anti-grease liquid and grease with WD-40 (or similar).



GR01244

SEMI ANNUAL INSPECTION

Inspect power motor:

Disconnect battery cable.

Remove end cover.

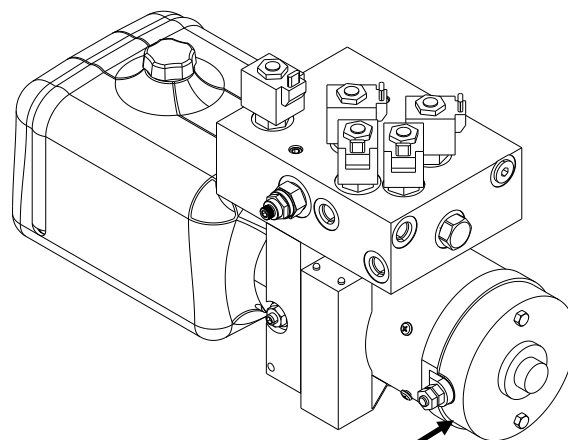
Examine armature brushes for wear.

(Brushes should be replaced if less than 1/8" long).

Clean out all residue from inside of motor housing.

Apply several drops of light weight machine oil to armature shaft bearing in motor end cover.

Reassemble motor.



Remove cover to check brushes and clean out motor

GR01513

Chapter 5 Placement of Decals



All decals must be in place and legible or all warranties are void.



If your liftgate is equipped with dual controls, an additional **Safety Instruction decal (80100850)** is to be placed in a conspicuous place near the second set of controls.

To maximize decal adhesion to surfaces:

- Surface must be dry and clean
- Firm pressure must be applied to decal
- Minimum surface temperature 65°
Heat gun may be used to heat surface

INSTALLATION OF DECALS

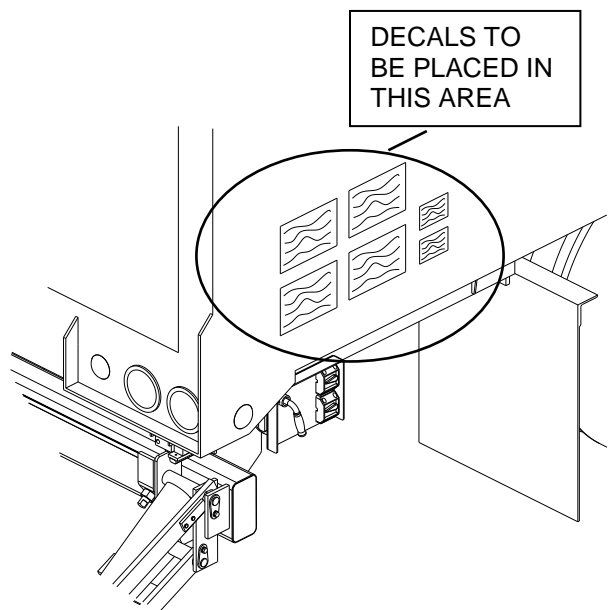
Install all decals listed below. Be certain they are installed in the proper location and are legible.

Each of the following five (5) decals are to be positioned in a conspicuous place near the control switches as shown.

- 80100850 – Safety Instruction Decal (1)
- 80101445 – Operation Decal (1)
- 75089296 – Stand clear decal (1)
- 80101370 – Hazard decal (1)

One (1) of the following two (2) decals is to be positioned in a conspicuous place near the control switches as shown.

- 80100585 GT-33 (3300 lbs.) Capacity Decal (1)
- 80100587 GT-44 (4400 lbs.) Capacity Decal (1)



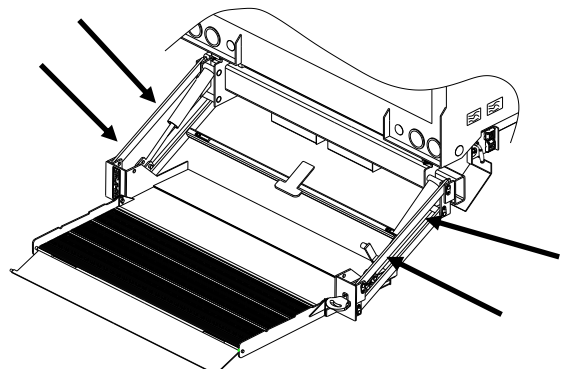
GR01512

KEEP CLEAR AND CAPACITY DECALS

The following decal is to be placed on the parallel arms.
75089296 – Stand clear decals (2)

One (1) of the following two (2) decals is to be placed on the parallel arms.

- 80100585 GT-33 (3300 lbs.) Capacity Decal (2)
- 80100587 GT-44 (4400 lbs.) Capacity Decal (2)



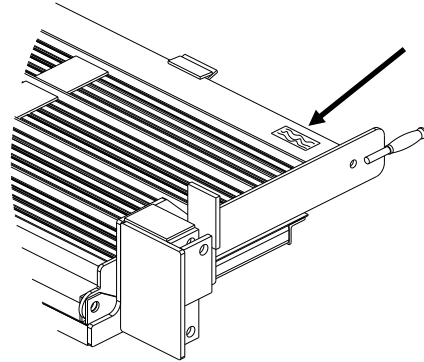
GR01504

Chapter 5 Placement of Decals

USE HANDLE DECALS

The following decal is to be placed next to extension opening handle.

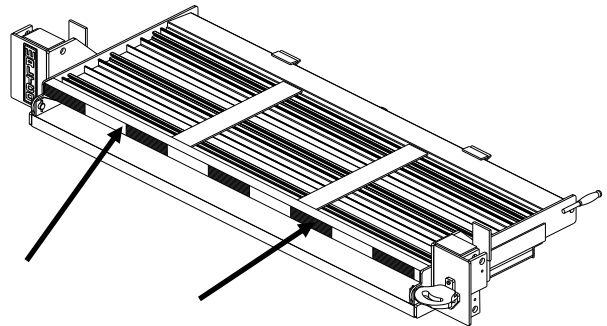
75089295 – Decal, use handle (1)



GR01247

CONSPICUITY TAPE

Add conspicuity tape (not provided) to deck extension edge as shown.



GR01276

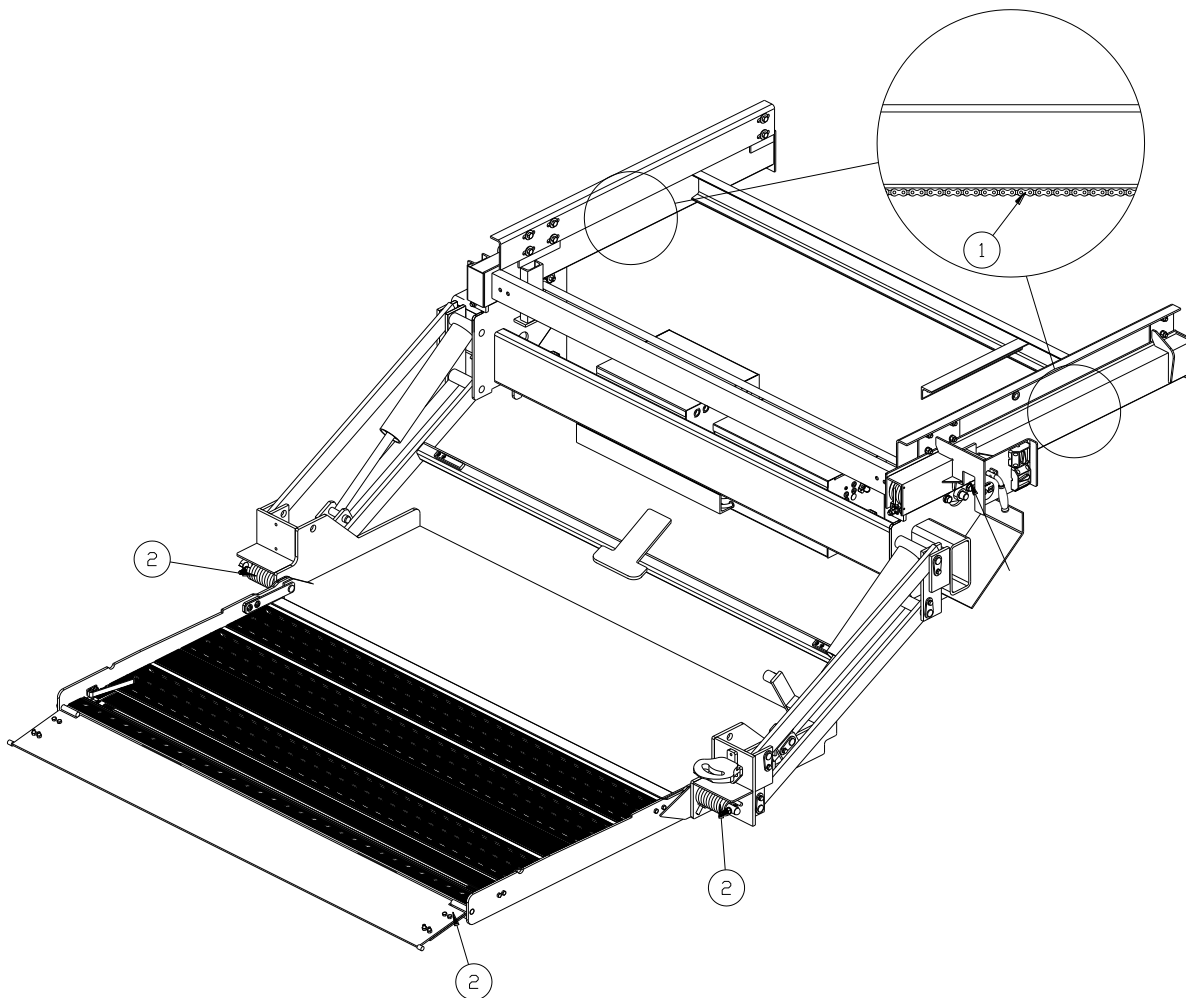
Chapter 6 Lubrication

LUBRICATION INSTRUCTIONS

This liftgate is equipped with Teflon™ bearings on all major pivot points and does not require any regular lubrication, except as outlined below. The points indicated should be lubricated approximately once every three (3) months, or as outlined in the lubrication schedule for heavier usage. If not sure of duty or cycles, always lubricate more frequently.

- 1) Lubricate the roller chain with WD-40 (or similar).
- 2) Lubricate ramp hinges and springs with a light weight machine oil.

Suggested Minimum Lubrication Schedule (In Days)			
Monthly Cycles	Light Duty	Med. Duty	Heavy Duty
250 Or Less	45	30	21
250-350	30	21	14
350-450	21	14	7
More Than 450	Contact Factory for Instructions		



GR01509

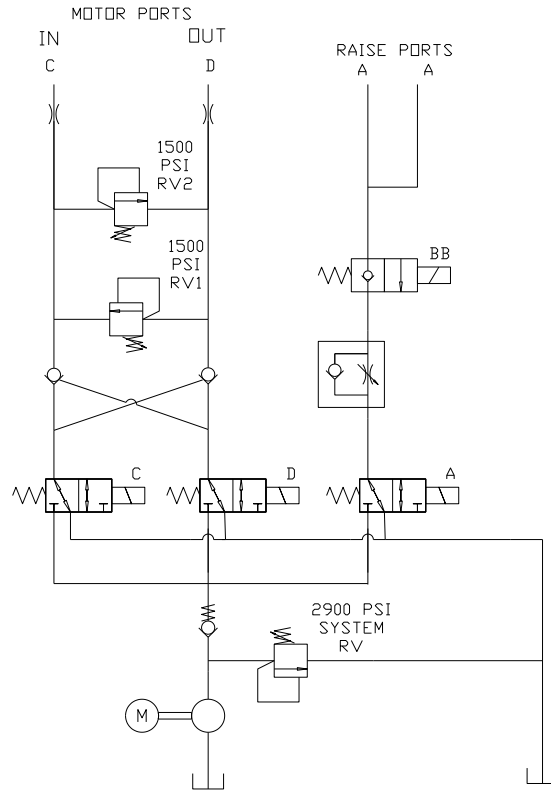
This page intentionally left blank.

Chapter 7 Schematics

Schematics Table of Contents

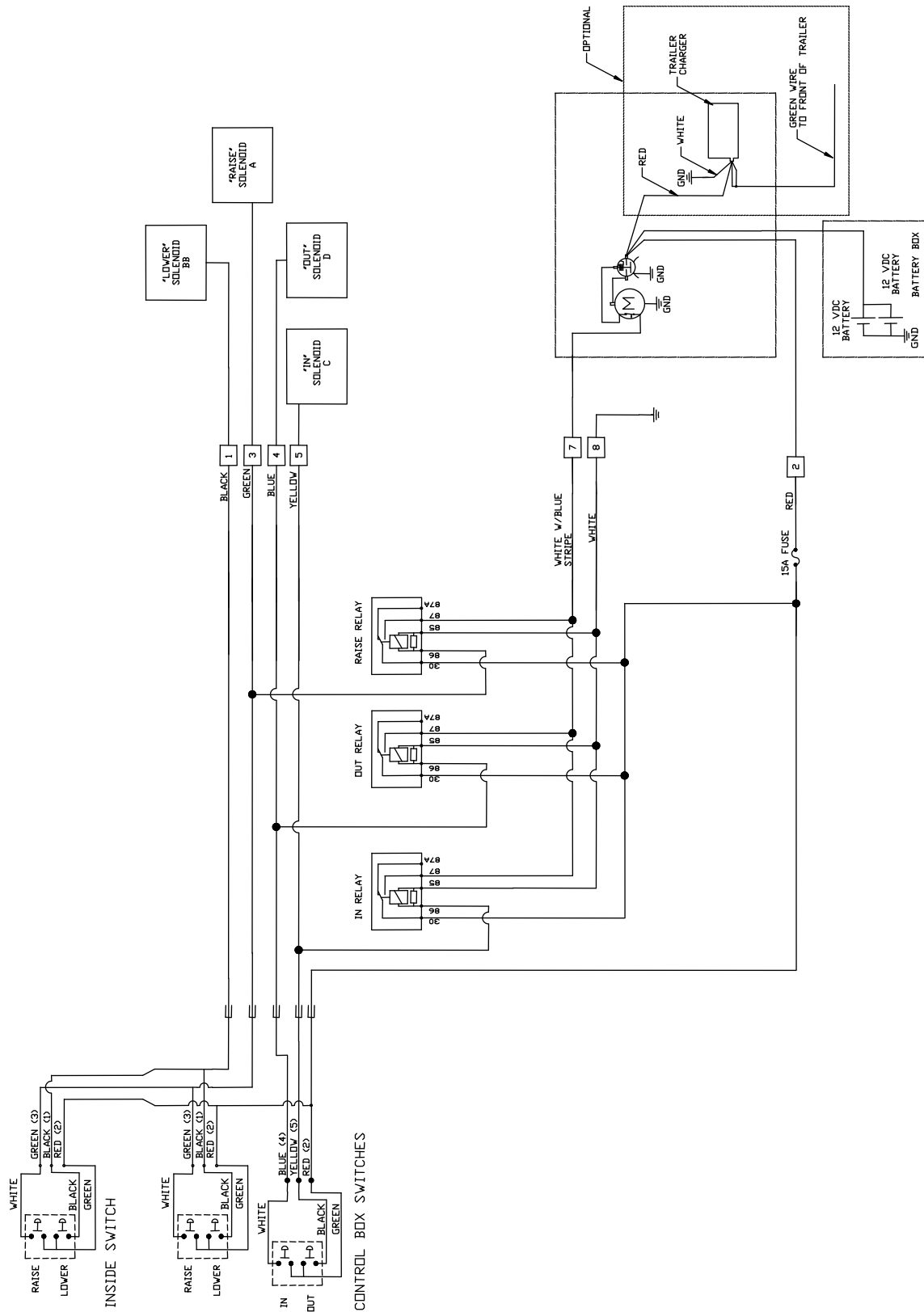
Hydraulic schematic	7-2
Wiring diagram	7-3
Platform	PM - 679
Track frame	PM - 680
Mount frame	PM - 681
Hydraulic and Electric layout	PM - 682
Pump box	PM - 683

Chapter 7 PMs & Schematics



GR01249

Chapter 7 PMs & Schematics



GR02704

ITEM	PART NUMBER	QTY	DESCRIPTION
1	27511000	1	Steel deck 28 x 80"
2	27513130	1	Aluminum extension, 42 x 80"
	27513140	1	Aluminum extension, 42 x 80, with C/S
3	27513120	1	Aluminum extension, wedge 32 x 80"
4	75086239	1	Hex bolt, 1/2-20 x 2-1/2", GR8
6	75085196	1	Lock nut, 1/2-20"
7	27519050	1	Coil spring, DS
8	27519060	1	Spring support tube, DS
9	27519200	1	Pin, torsion arm, DS
10	75085005	4	Hex nut, 3/8-16"
11	75086872	4	Button socket head, 3/8-16 x 1-1/4"
12	75086924	4	Hex bolt, 1/2-20 x 1"
13	22515500	2	Cart stop retainer
14	22515200	1	Spring, DS
15	27513960	1	Cart stop hinge
16	27513950	1	Cart stop, DS
17	75088131	3	Washer, .875" OD, .5" ID
18	27513955	1	Cart stop, CS
19	22515300	1	Spring, CS
20	75086056	4	Hex bolt, 3/8-16 x 1"
21	22515100	2	Cart stop opening bar
22	75085005	4	Hex nut, 3/8-16
23	75090178	1	Plastic handle, yellow
24	27513974	1	Pin
25	27513970	1	Handle
26	20261600	1	Spring
27	75089541	3	Spring pin, 1/4 x 1-7/8"
28	27595120	2	Pin
29	75085193 ^A	4	Hex lock nut, 3/8-16
30	75086057 ^A	4	Hex bolt, 3/8-16 x 1-1/4"
31	27513981 ^A	1	Hinge block, DS
32	27513990 ^A	1	Ramp skin
33	27513985 ^A	1	Hinge block, CS
34	75085177 ^B	2	Lock hex nut, 5/16-18
35	27597410 ^B	1	Folding step

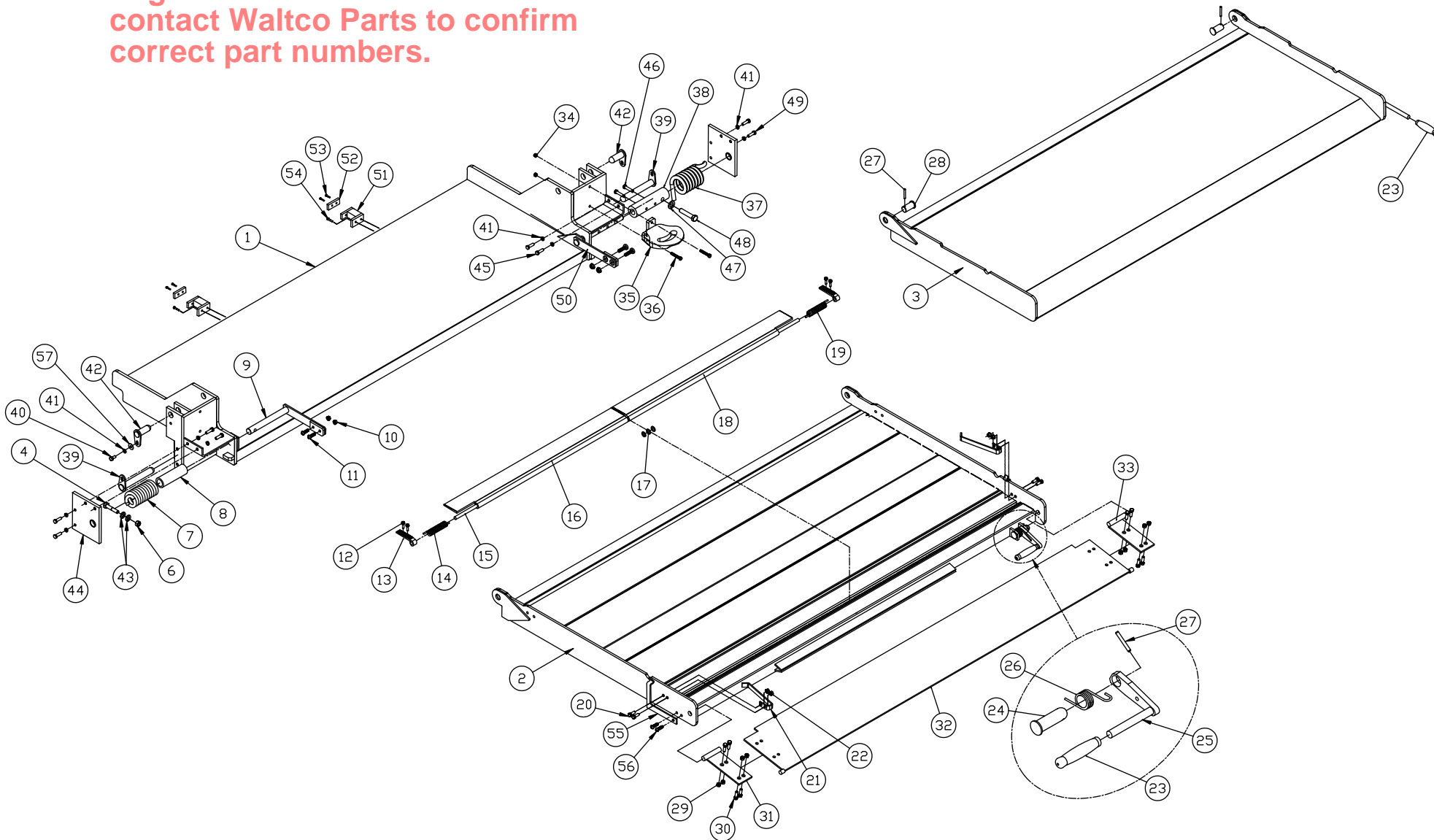
ITEM	PART NUMBER	QTY	DESCRIPTION
36	75086039 ^B	2	Hex bolt, 5/16-18 x 2"
37	27519080	1	Coil spring, CS
38	27519075	1	Spring support tube, CS
39	27371002 ^C	2	Pin, 1" dia. x 7" lg.
40	75086055 ^C	4	Hex bolt, 3/8-16 x 3/4" Grade 5
41	75088081 ^C	10	Lock washer, 3/8"
42	23370800 ^C	2	Pin, 1" dia. x 2-3/4" lg.
43	75088083	2	Lock Washer, 1/2" Plated
44	27511250	2	Plate, Side Support
45	7500010-6	4	Hex Bolt, 3/8-16 X 1", Grade 8
46	7500016-1	2	Hex Bolt, 3/8-16 X 1.375", Stainless Steel
47	75088085	1	Lock Washer, 5/8 Plated
48	7500010-7	1	Hex Bolt, 5/8-11" X 2.75", Grade 8
49	75086218	4	Hex Bolt, 3/8-16 X 1-1/4", Grade 8 Plated
50	27519100	1	Pin, Torsion Arm, CS
51	27563150	2	Upstop Weldment
52	34427307	2	Wear Pad
53	75086854	4	1/4" - 20 x 5/8" Self Tap Screw
54	75086217	4	5/16-20 x 1-1/4" Grade 8 Bolt
	75085003	4	5/16-20 Serrated Lock Nut
55	27513995	2	Ramp Retention Clip
56	75086872	4	3/8-16 x 1-1/4" Button Head Cap Screw
57	75088053 ^C	4	Flat Washer, 3/8"

^A Included in 27513980 (Complete single piece ramp)

^B Included in 27597400 (Kit, Platform Step)

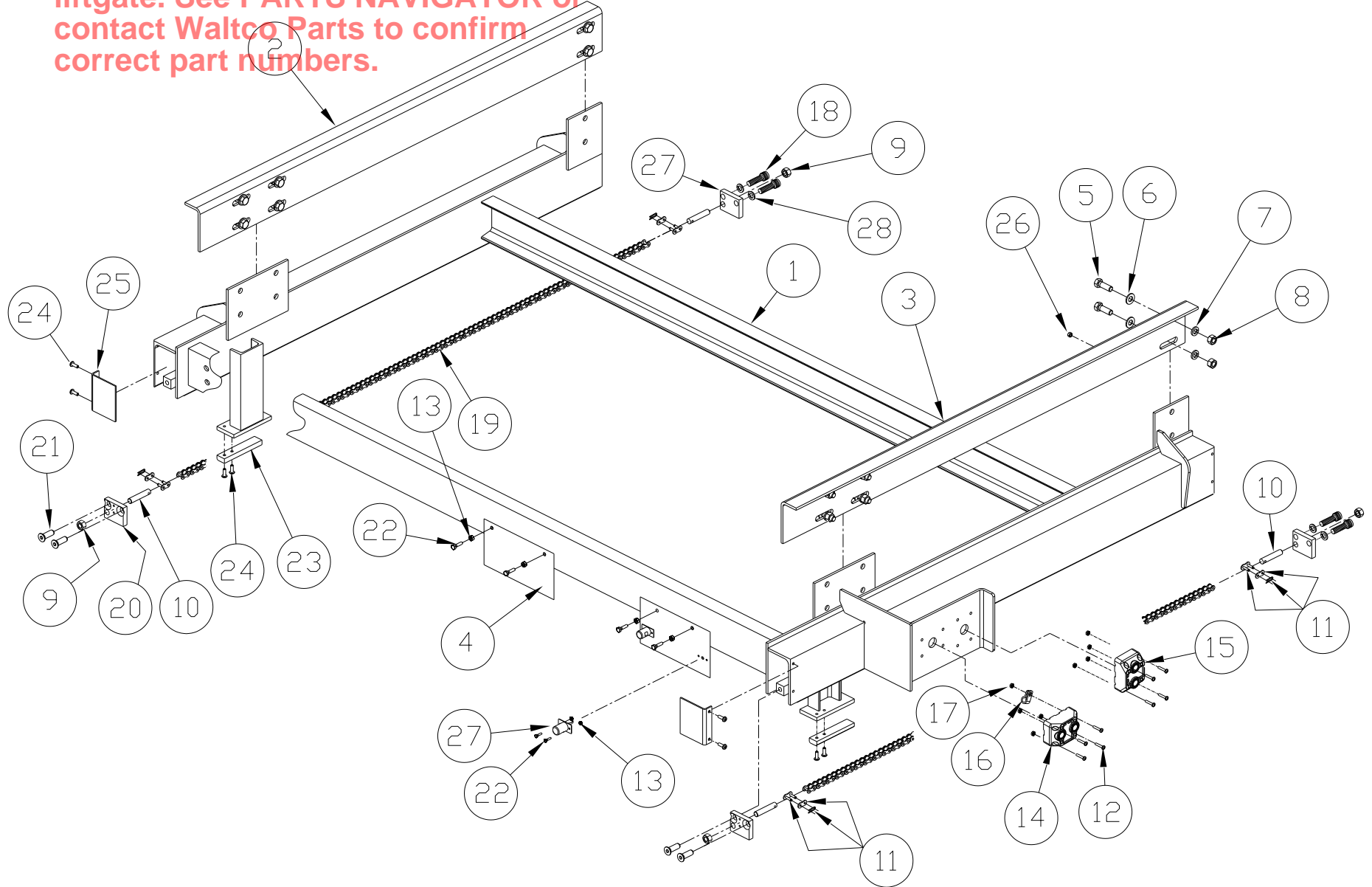
^C Included in 80001304 (Pin Replacement Kit)

IMPORTANT:
Platform Parts shown may not match your
 liftgate. See **PARTS NAVIGATOR** or
 contact **Waltco Parts** to confirm
 correct part numbers.



ITEM	PART NUMBER	QTY	DESCRIPTION
1	27561100	1	Track assembly std track (62.5")
	27562300		Track assembly extended track (65.25")
2	27567330	1	Mounting angle, driver side
	27567120-2		Mounting angle, D.S. Canadian Underride
3	27567320	1	Mounting angle, curb side
	27567120-1		Mounting angle, C.S. Canadian Underride
4	27564070	1	Decal mounting plate
5	75085115	12	Hex bolt, 9/16-18 x 1.5, GR 8.
6	75088065	12	Washer, 9/16"
7	75088084	12	Lock washer, 9/16"
8	75085115	12	Nut, 9/16-18 Nylok
9	75085162	4	Lock nut, 1/2"-13
10	27569110	4	Chain tensioner
11	75081117	4	Connecting link
12	75086732	8	Screw, #10-32 x 1"
13	75085161	8	Lock nut, 1/4"-20
14	10099328	1	Switch, In / Out, 10'
15	10099322	1	Switch, Raise / Lower, 10'
16	75083045	1	Hose clamp, 3/8"
17	75085000	8	Nut, # 10-32
18	75087580	4	S.H.C.S., 1/2-13 x 1.25 Lg.
19	27569121	2	Chain std track (62.5")
	27569122		Chain ext track (65.5")
20	27569140	2	Chain bracket bar
21	75086235	4	Socket flat head cap screw, 1/2-13 x 1-1/4"
22	75086006	8	Hex bolt, 1/4-20 x 1"
23	39035700	2	Plastic up stop
24	75086874	8	Screw, 1/4-20 x 5/8"
25	27569130	2	Cap, rail
26	75085003	1	Hex nut, 5/16-18
27	27569141	2	Chain bracket bar
28	75088260	4	Lock Washer, 1/2"

IMPORTANT:
TRACK FRAME Parts shown may not match your liftgate. See **PARTS NAVIGATOR** or contact **Waltco Parts** to confirm correct part numbers.

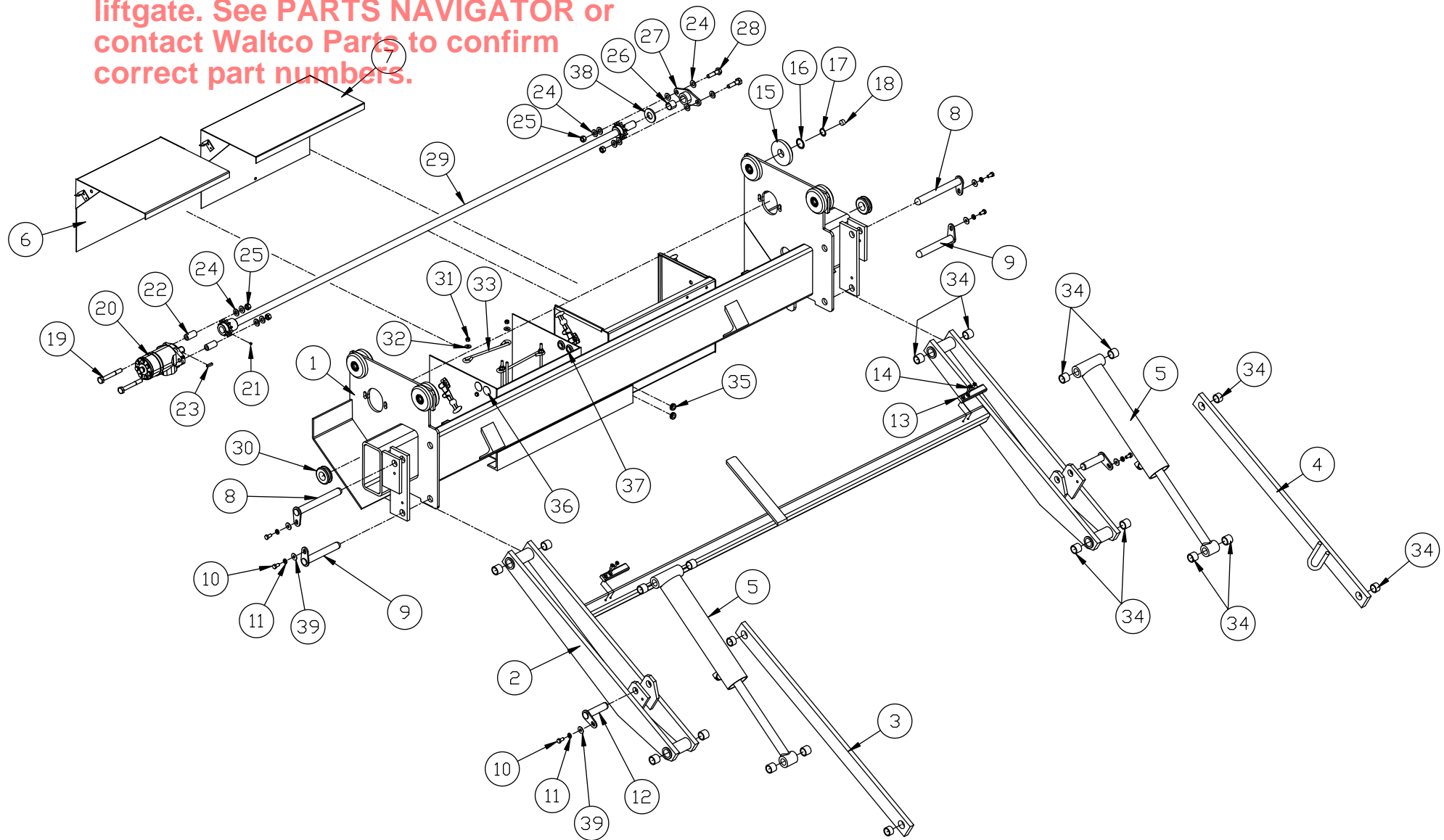


ITEM	PART NUMBER	QTY	DESCRIPTION
1	27520000	1	Mount frame with boxes
2	27531050	1	Lift arm Standard (40" lg.) for Standard track (62.5)
	27531055	1	Lift arm Extended (42" lg.) for Extended track (65.25)
3	27551050	1	Parallel arm, DS Standard (40" lg) for Standard track (62.5)
	27551080	1	Parallel arm, DS Extended (42" lg.) for Extended track (62.5)
4	27551100	1	Parallel arm, CS Standard (40" lg) for Standard track (62.5)
	27551085	1	Parallel arm, CS Extended (42" lg.) for Extended track (62.5)
5	27580020	2	Lift cylinder
6	10291503 ^B	1	Lid, battery box
7	27593000 ^A	1	Lid, pump unit box
8	27595100 ^C	2	Pin, 1" dia x 8-15/16" lg.
9	27371002 ^C	2	Pin, 1" dia x 7" lg.
10	75086055 ^C	6	Hex screw, 3/8-16 x 3/4", GR 5.
11	75088081 ^C	6	Lock washer, 3/8"
12	23370300 ^C	2	Pin, 1" dia x 3-15/16" lg.
13	39035700	2	Plastic wear plate
14	75086874	4	Screw, 1/4-20 x 5/8"
15	27566530	8	Wheel, with bearing
16	75088069	8	Washer
17	75001009	8	Retaining ring
18	27566500	4	Pad, Plastic
19	75086234	2	Hex bolt, 1/2-20 x 4-1/2"
20	27569000	1	Hydraulic motor
21	75086740	1	Set screw, 1/4-28 x 1/4"
22	27569100	2	Spacer tube
23	75090179	1	Key, drive axle
24	75088056	8	Washer, 1/2"
25	75085196	4	Lock nut, 1/2-20
26	10010167	1	Bearing

ITEM	PART NUMBER	QTY	DESCRIPTION
27	27565200	1	Drive axle bearing housing w/bearing
28	75086190	2	Hex bolt, 1/2-20 x 2"
29	27566000	1	Drive axle
30	75050004	2	Grommet
31	75085177	4	Lock nut, 5/16"-18
32	75088052	4	Washer, 5/16"
33	10291403	2	Battery hold down
34	85803391	20	Bearing
35	75089312	2	Grommet, 7/16"
36	75089579	2	Plug, Plastic 1-1/8"
37	75089321	2	Grommet, 3/4" ID
38	75081223	1	Bronze washer
39	75088053 ^C	6	Flat Washer, 3/8"

- ^A 27592900 Replacement pump unit box with cover
^B 10290513 Replacement battery box with cover
^C 80001304 Replacement pin kit

IMPORTANT:
MOUNT FRAME Parts shown may not match your liftgate. See **PARTS NAVIGATOR** or contact **Waltco Parts** to confirm correct part numbers.



ITEM	PART NUMBER	QTY	DESCRIPTION
1	75083206	1	Hydraulic hose, 1/4" x 90"
2	75084040	2	Hydraulic hose, 1/4" x 75-3/4"
3	75083319	2	Connector
4	75082882	2	Connector
5	75082745	2	Barbed Fitting
6	27595020	1	Power Cable, 2Ga, 45"
7	10195508	2	Cable, 2Ga, 8"
8	82021059	2	Return Line, 1/4" PVC 52" for Curb Side 92" for Driver's Side
9	27595000	1	Ground cable, 2Ga, 40"
10	27595010	1	Ground cable, 2Ga, 95"
11	75085003	4	Hex nut, 5/16-18
12	10099323	1	Switch, Raise / Lower, 15' cord
13	27597110	1	Switch bracket
14	75086860	4	Screw, #8-32 x 3/4"
15	75084041	1	Hydraulic hose, 1/4" x 66-3/4"
16	75083314	3	Hex bolt, 5/16-18 x 1-3/8"
17	75083313	3	Cover plate
18	75083315	5	Twin clamp
19	75083312	3	Parklamp weld plate
20	27595030	1	Split loom
21	75086084	2	Stacking Bolt, 5/16-18 x 25/32"
22	75083042	3	Cable Clamp, 7/8"
23	75086036	3	Hex Bolt, 5/16-18 x 1"
24	75082886	2	Connector
25	75082889	2	Connector
26	27581030	2	Lock Valve
27	27581010	1	Lock Valve Extension Harness D.S. 96"
28	27581020	1	Lock Valve Extension Harness C.S. 66"

WALTCO
LIFT CORP
GT-33/44

REVISED: 12/11/09
E.O. 6323
REV. 01

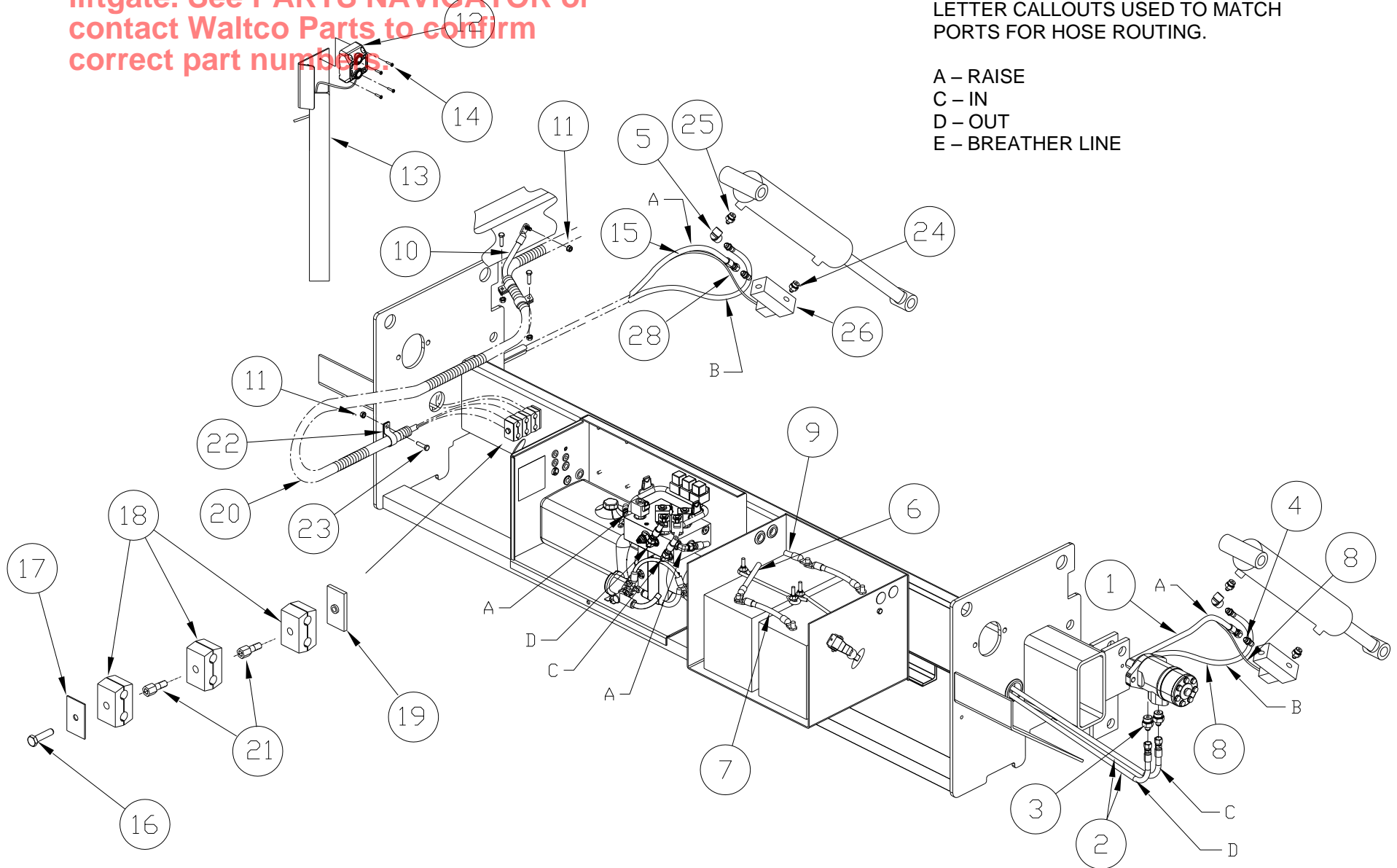
PM-682B

IMPORTANT:
HYDRAULIC AND ELECTRIC LAYOUT
 Parts shown may not match your liftgate. See **PARTS NAVIGATOR** or contact Waltco Parts to confirm correct part numbers.

NOTE

LETTER CALLOUTS USED TO MATCH PORTS FOR HOSE ROUTING.

A – RAISE
 C – IN
 D – OUT
 E – BREATHER LINE



ITEM	PART NUMBER	QTY	DESCRIPTION
1	70423325	1	Pump unit, gravity down ^A
2	75082866	1	Connector, elbow 45, 9/16-18 JIC Male x 9-16-18 SAE Male
3	75088081	2	Lock washer 3/8"
4	75086055	2	Hex bolt, 3/8-16 x 3/4"
6	27595010	1	Ground cable to trailer
7	75086036	1	Hex bolt, 5/16-18 x 1"
8	75086065	1	Hex bolt, 5/16-18 X 3/4"
9	27595000	1	Ground cable to batteries
10	27595020	1	Power cable to batteries
12	10099501	1	Terminal strip, 90 Deg.
13	75085003	2	Serrated hex nut, 5/16-18
14	75085001	2	Hex nut, 1/4 - 20
16	70093640	1	Starter Solenoid, 12V
17	70093641	1	Solenoid cable
18	75088052	1	Washer
19	75082869	3	Connector, elbow 90, 9/16-18 JIC Male x 9-16-18 SAE Male
20	27591000	1	Pump enclosure base
21	75086702	1	Screw, 1/4"-20 X 5/8"
23	75089313	9	Grommet, 1/2"
26	85803921	3	Relay, 12V
27	75085000	2	Hex nut, #10-32
28			
29	27597000	1	Harness, motor / valve control
30	75089854	1	Fuse, 15A
31	27597220	1	Harness, battery charger (optional)
32	27597210	1	Trailer battery charger (optional)
33	75085001	4	Hex nut, 1/4-20" (optional)
34	75089322	3	Grommet, 5/16"
35	75050003	1	Grommet, 9/16"
36	75089571	1	Plastic plug, 3/4"
37	70092501	3	Solenoid coil/valve stem (Lower)
38	70092503	1	Solenoid coil/valve stem (In, Out, & Raise)

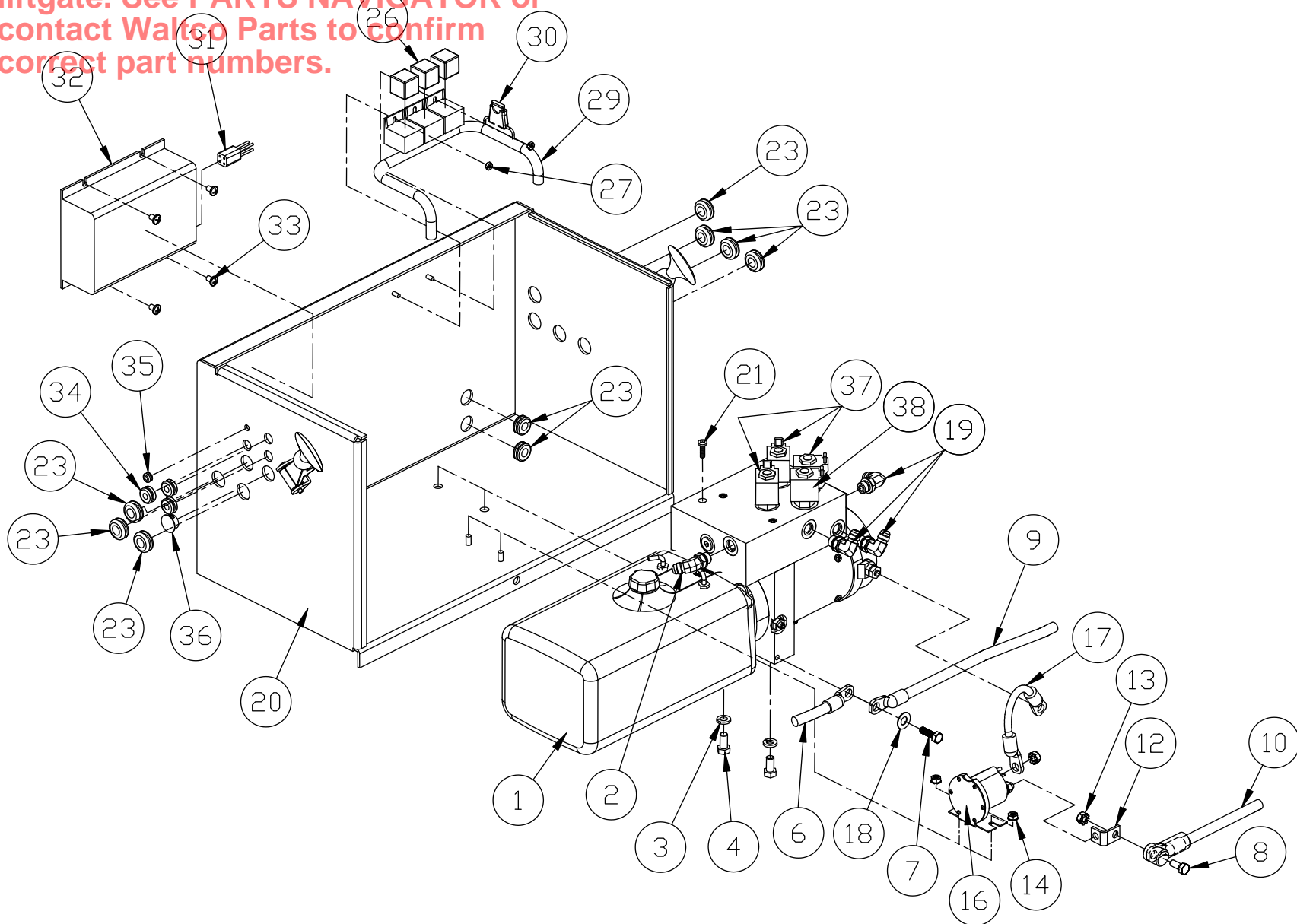
^A Includes solenoid

WALTCO
LIFT CORP
GT-33/44

REVISED: 1-25-10
E.O. 6357
REV. 02

PM-683A

IMPORTANT:
PUMP BOX Parts shown may not match your
 liftgate. See **PARTS NAVIGATOR** or
 contact Walco Parts to confirm
 correct part numbers.



WALCO
 LIFT CORP
 GT-33/44

REVISED: 1-25-10
 E.O. 6357
 REV. 02

PM-683A

This page intentionally left blank.

Chapter 8 – How To Order Parts

Repairs should be made only by authorized mechanics using WALTCO Replacement parts.

When ordering repair or replacement parts, please include all the information asked for below. If this information is not available, a complete written description or sketch of the required part will help WALTCO identify and deliver the needed part to you.

THE FOLLOWING INFORMATION MUST BE INCLUDED:

1. SERIAL NUMBER - [WALTCO liftgate serial numbers can be found on the Specification Tag attached to the mount frame. (On older units the Specification Tag is located on the side or bottom of the platform.)]
2. MODEL NUMBER - [Or capacity]
3. PLATFORM SIZE

THEN INCLUDE THE FOLLOWING INFORMATION:

4. PART NUMBERS
5. DESCRIPTION
6. QUANTITY REQUIRED

MAIL, E-MAIL OR PHONE YOUR REQUEST TO:

Waltco Truck Equipment Co.
285 Northeast Avenue
Tallmadge, OH 44278
1-800-411-5685
FAX: 1-800-411-5684
E-MAIL: parts@waltco.com

ALL PARTS ARE F.O.B. FROM THE SHIPPING FACTORY

PLEASE NOTE:

To assure you of continuing and effective quality control, our warranty policy permits replacement of hydraulic cylinders, valves and motor pump units when their factory seals are intact. Parts under warranty will be exchanged promptly after careful inspection of the returned assemblies.

This page intentionally left blank.



Every vehicle that has a WALTCO Liftgate must have legible **WARNING AND OPERATION DECALS** clearly posted on the vehicle and an **OWNER'S MANUAL** in the vehicle at all times as a guide for proper operation and maintenance.

Additional WARNING DECALS, OPERATION DECALS and OWNER'S MANUALS can be obtained from WALTCO TRUCK EQUIPMENT COMPANY.

NOTE:

**When ordering, give model
and serial number of the liftgate.**

IMPORTANT

KEEP THIS OWNER'S MANUAL IN THE VEHICLE

WARNING

Improper operation and maintenance of this liftgate could result in severe personal injury or death.

Read and understand the contents of this manual and all warning and operation decals before operating and/or performing maintenance on this liftgate.

**For SAFETY information on this liftgate see
Chapter 1 of this manual**