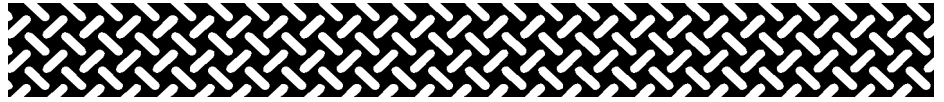


# WALTCO



## LPF-25, LPF- 30, LPF-40

Visit us at [www.waltco.com](http://www.waltco.com)

### Owner's Manual

2500, 3000, 4000 lb. Capacity, Flipaway Liftgate

---

# ***IMPORTANT***

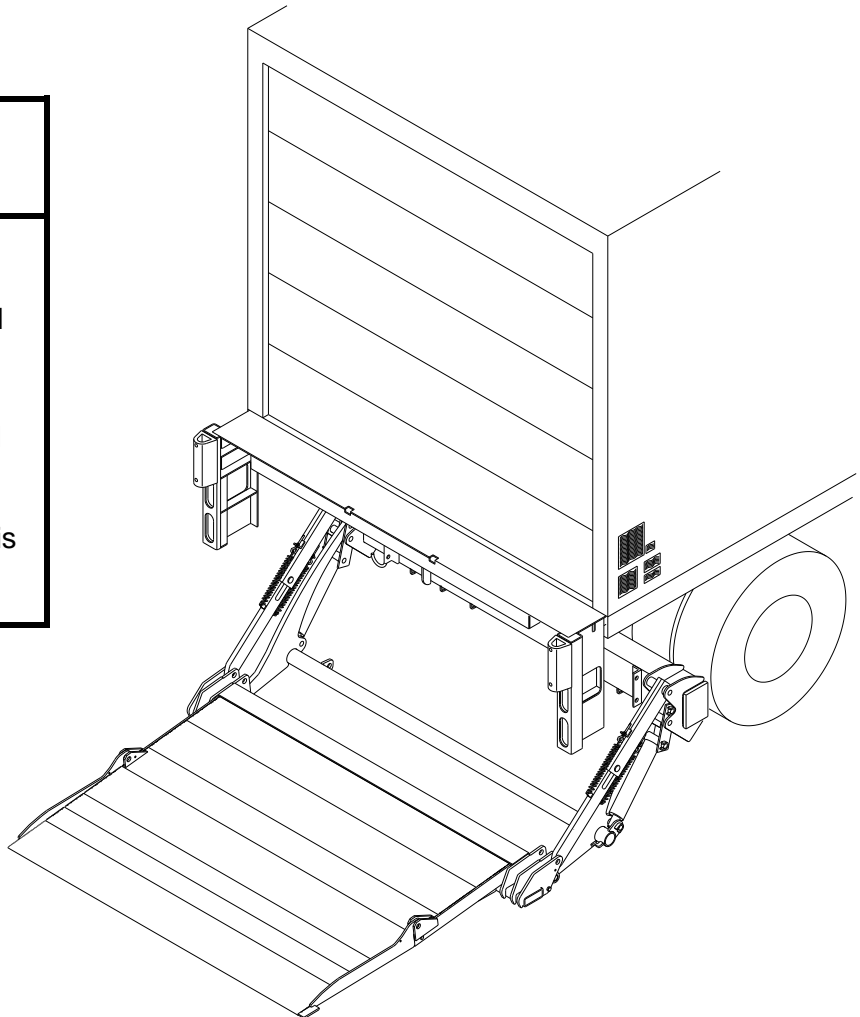
## **KEEP IN VEHICLE**

---

### **WARNING**

Improper operation and maintenance of this liftgate could result in severe personal injury or death.

Read and understand the contents of this manual and all warning and operation decals before operating and/or performing maintenance on this liftgate.



1-2010

GR02541

#### **OHIO**

285 Northeast Avenue  
Tallmadge, OH 44278  
(330) 633-9191  
FAX – (330) 633-1418

E.O. 6346 Rev. 24

#### **GEORGIA**

8960 Highway #5  
Building A  
Douglasville, GA 30134  
(770) 949-5342  
FAX – (770) 949-5344

80122502

# Table of Contents

	Chapter
INTRODUCTION .....	
SAFETY INFORMATION .....	1
LIFTGATE TERMINOLOGY .....	2
OPERATIONS INSTRUCTIONS .....	3
INSPECTION .....	4
PLACEMENT OF DECALS .....	5
LUBRICATION INSTRUCTIONS .....	6
PM's & SCHEMATICS .....	7
HOW TO ORDER PARTS .....	8

# INTRODUCTION

If anyone observes improper installation, improper operation, or damage, they should immediately contact a qualified person for assistance and correction. We strongly urge anyone that has any questions or doubts as to the installation, condition, use, operation, maintenance or repair of the liftgate to contact us at Waltco where we have qualified personnel that will be happy to assist you. Telephone numbers and addresses of these locations are listed in the Owner's Manual and Installation Instructions.

## INSTALLATION

Waltco liftgates should only be installed by those with sufficient basic skills to understand the installation and operation of the liftgate, along with the equipment on which the liftgate is being installed. Waltco's installation instructions are not intended to give rationale for all the instructions that are given; however, it is the intent of these instructions to give the installer both the operations and what we believe to be the most desirable sequence of implementing these operations. These instructions can in no way expand into an area where they will replace a qualified person, or clear thinking and a basic knowledge that must be possessed by the installer.

It has been our experience that a knowledgeable journeyman following these instructions and observing the operation of the liftgate will have a sufficient comprehension of the liftgate to enable this person to troubleshoot and correct all normal problems that may be encountered.

Failure to follow the installation instructions, adjustments and mounting dimensions may result in improper and unsafe operation of the liftgate. Unauthorized alterations of the liftgate can cause an undesirable and dangerous condition.

## OWNER'S MANUAL

The Waltco Owner's Manual is intended to act as a guide for operation and routine maintenance but is no way intended to encourage usage or repair of the liftgate by those who are not qualified to do so.

The contents of the owner's manual include, but are not limited to general operation instructions, routine lubrication, parts lists, and an outline of things that should be checked but may not be obvious to those not technically qualified. This manual assumes the liftgate is properly installed, undamaged and operates correctly. Improper installation, improper operation, or damage should be immediately corrected by a qualified person.

## INSPECTION

As part of the regular inspection of a liftgate and after damage or suspicion of an overload, inspect for wear or structural damage and make necessary repairs or replacements. Check all structural components and their attachment to the liftgate for cracked welds, loose fasteners, wear and part deformation. Check cylinder and hose for leaks. Inspections and repairs should be made by a qualified mechanic.

## REPLACEMENT PARTS

Use only Waltco original equipment replacement parts. Components of other liftgate manufacturers may outwardly appear to be the same but are not interchangeable with Waltco products. Waltco components are specifically designed for safety requirements, reliability and compatibility with our products. Refer to your Waltco parts manual when ordering parts. NOTE: When ordering, give model and serial number of liftgate.

## DECALS

It is important that every vehicle that has a WALTCO Liftgate have legible DECALS clearly posted on the vehicle and an OWNER'S MANUAL in the vehicle at all times as a guide for proper operation and maintenance.

Additional DECALS and OWNER'S MANUALS can be obtained from WALTCO TRUCK EQUIPMENT COMPANY

80101388 Rev 02 EO 6156

# Chapter 1 Safety Information

## WARNING

**Read, understand, and follow all of the warning listed below.**

**Failure to follow these warning could result in severe personal injury or death.**

- Read and understand the Owner's Manual, all decals and warning on liftgate before operating liftgate.
- Do not operate liftgate without a thorough knowledge and understanding of the operation of the liftgate.
- Liftgate hazards can result in crushing or falling.
- This liftgate is designed for loading and unloading of cargo. If personnel are required to ride liftgate, observe and familiarize yourself with the liftgate operation, decals and manuals. Ensure stable footing at all times.
- Do not ride liftgate with unstable loads.
- Wheeled loads must be properly retained from rolling.
- Tall, high center of gravity loads must be retained from falling over.
- Never overload liftgate.  
Refer to the Explanation of Specification Tag in the Liftgate Terminology chapter for liftgate capacity rating.
- Keep hands and feet clear of all potential pinch points.
- Never use liftgate if it makes any unusual noise, has unusual vibration, raises or lowers unevenly, or fails to operate smoothly.
- Never use liftgate if it shows any signs of structural damage such as cracked welds, bent or distorted members.
- Do not attempt any repairs unless you are qualified to do so. Care should be taken when work is performed on a disabled liftgate located near moving traffic. When possible the vehicle should be moved away from traffic areas for repair. Precautionary measures should be taken to ensure personal safety including those recommended in Federal Motor Vehicle Safety Standards 571.125.
- All protective covers, guards, and safety devices must be in place and access doors closed before operating liftgate.
- Do not allow anyone to stand in, or near area, in which Platform will open and close before opening or closing Platform.
- Do not allow anyone to stand near the Platform where a falling load could land on them.
- Platform is always to be properly stored and secured for transit. See the Owner's Manual for details.
- Take care to retain cargo during transit for liftgate Platforms which function as the tailgate or door of the cargo area. Small objects can fall through the space between the vehicle and the folded Platform.
- A Lock-Out device or Shut-Off Switch should always be used to prevent unauthorized use of liftgate.
- For liftgates with Runners, never use liftgate if Runners do not travel freely and smoothly.
- For liftgates with Roller Lifting Chain, the Chain should be replaced every (5) five years or 15,000 cycles, whichever comes first. Replace only with Waltco approved Roller Chain.
- Never transfer loads which exceed lifting capacity on or over any part of the Platform unless the liftgate is equipped with a special reinforced Platform and Platform Support Bars for use when the Platform is used as loading ramp (dock board). Refer to the "Using Platform as a loading ramp" Chapter in the Operation Instructions of the BZ/RZ series Owner's Manual.
- For liftgates equipped with Trailer Hitches, never exceed the rated capacity of the hitch. Do not exceed the vehicle's weight rating. Refer to the vehicle's Owner's Manual.
- Vehicle must comply with all state and federal standards.
- Follow the "Maintenance Guide" chapter in the Owner's Manual.

# Chapter 1 Safety Information

## Liftgates with Tilt Function

- Proper use of the Control Switches is of extreme importance.
- Improper use of Tilt Switch could cause load to fall from the Platform or damage the liftgate.
- Platform should be in a generally horizontal position when raising or lowering with a load.
- In any tilt position, the Platform may vary from level while raising or lowering the Platform.

## Liftgates equipped with spring operated Cam Closer

- Replace Cam Release Spring every five (5) years or 15,000 cycles, whichever comes first.

## RGL-Series Liftgates

- Make certain Platform Brake mechanisms are operating properly.
- The Runners are always to remain powered up against the Upstops Pins when in transit.
- Inspect Cables every three (3) months or 750 cycles, whichever comes first. Cables must be replaced if they show signs of wear, distortion, kinking or if any broken wires are visible
- Replace cables every five (5) years or 10,000 cycles, whichever comes first.



This is the safety alert symbol. This manual uses this symbol to alert you to potential personal injury hazards.

Obey all safety messages that follow this symbol to avoid personal injury or death.

## SIGNAL WORDS

### WARNING

Indicates a potentially hazardous situation, which if not avoided, could result in death or serious injury.

Black letters on an orange background

### CAUTION

Indicates a potentially hazardous situation, which if not avoided, may result in minor or moderate injury. May also be used to alert against unsafe practices.

Black letters on a yellow background.

### NOTICE

Indicates a potentially hazardous situation, which if not avoided, may result in property damage.

 **WARNING** **CAUTION*****NOTICE***

# WALTCO Warranty Policy

WALTCO warrants its products free of defects in materials and workmanship.

WALTCO will replace components found defective during the warranty period. Labor will be reimbursed according to our flat rate labor schedule at the prevailing shop rate.

Contact our Sales or Warranty departments for the warranty period of your model or for information regarding our flat rate labor schedule.

## WALTCO Warranty Claim Procedure

For consideration, all claims must be received within 30 days of repair and include the following information:

- Liftgate Serial Number
- Description of problem and corrective actions
- Itemization of the labor charge to include the number of hours and labor rate

Replacement warranty parts can be obtained by contacting Waltco's Parts Department. Parts must be returned for inspection when requested.

### Exclusions:

Waltco's warranty does not include reimbursement for service calls, vehicle rental, towing, travel time, fabrication of parts available from WALTCO, damage from misuse or abuse, negligence, accidents, alteration, loss of income or overtime expense, oil, or normal wear.

Diagnosis and troubleshooting time are included in the flat rate labor times.

Warranty and technical information is available from WALTCO's toll free customer service lines from 8:00 a.m. to 5:00 p.m. EST.

### ***Waltco Lift Corp.***

285 Northeast Ave, Box 354, Tallmadge, OH 44278

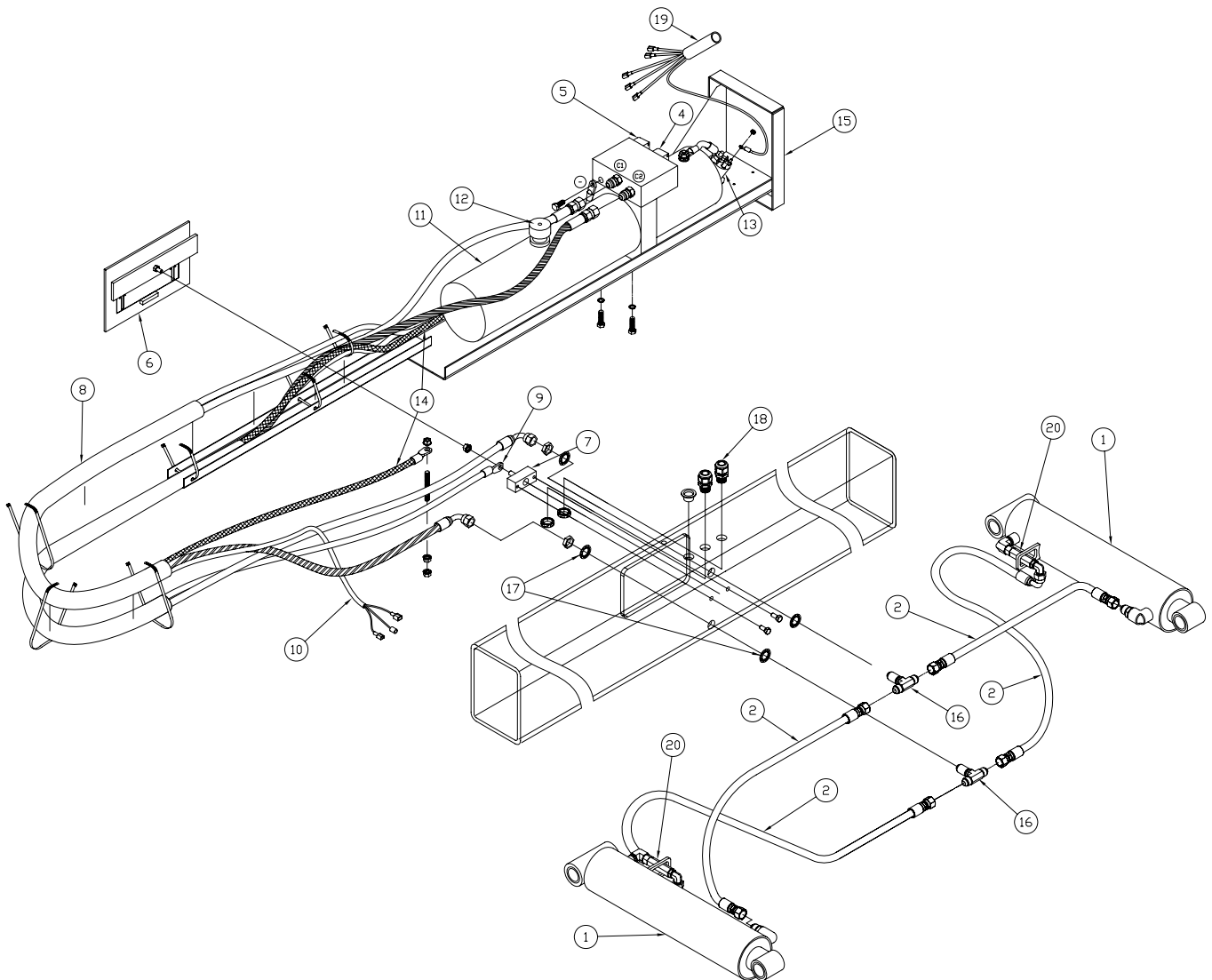
1-800-211-3074, 330-633-9191

Please visit our websites: <http://www.waltco.com> or <http://www.hiab.com>

***We're behind you all the way!***

# Chapter 2 Liftgate Terminology

- |  |   |
|--|---|
| <ol style="list-style-type: none"><li>1. Hydraulic Cylinder</li><li>2. Hose Assembly</li><li>4. "Lower" Solenoid</li><li>5. "Raise" Solenoid</li><li>6. Access Cover Plate</li><li>7. Stud Terminal</li><li>8. Protective Sleeve</li><li>9. Power Cable Assembly</li><li>10. Control Cord Assembly</li><li>11. Pump and Motor Unit</li></ol> | <ol style="list-style-type: none"><li>12. Breather</li><li>13. Pump Unit Starter Solenoid</li><li>14. Ground Cable Assembly</li><li>15. Slide Tray Assembly</li><li>16. Bulk Head Tee Fitting</li><li>17. Washer, Tooth Lock</li><li>18. Strain Relief</li><li>19. Power Down Module</li><li>20. Comp Valve</li></ol> |
|--|---|

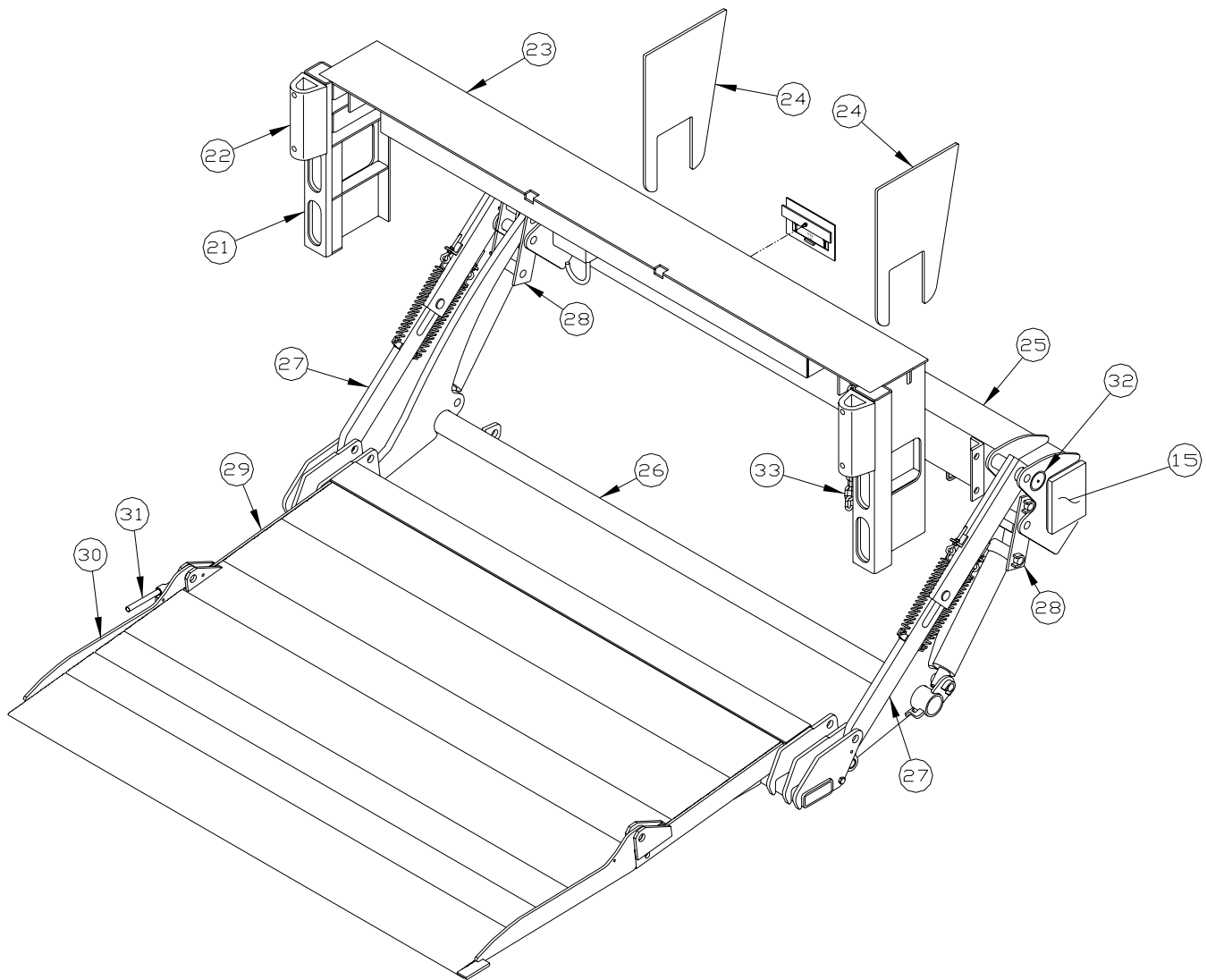


GR02530

# Chapter 2 Liftgate Terminology

- 21. Dock Bumper Assembly
- 22. Rubber Bumper
- 23. Bed Extension
- 24. Mount Plates
- 25. Mount Tube Assembly
- 26. Lift Arm Assembly

- 27. Parallel Arm Assembly
- 28. Pivot Block Assembly
- 29. Deck Assembly
- 30. Deck Extension Assembly
- 31. Torsion Bar
- 32. Specification Tag
- 33. Latch Chain

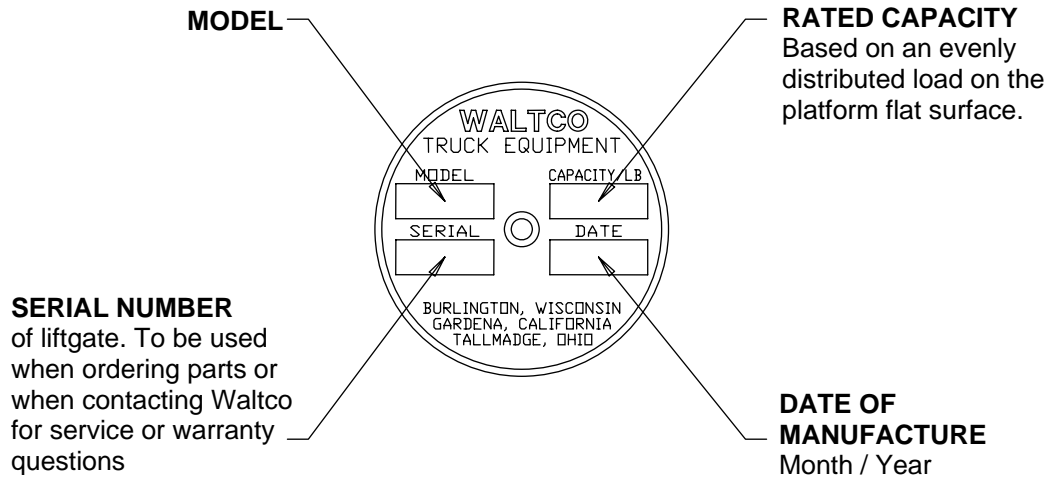


GR02531

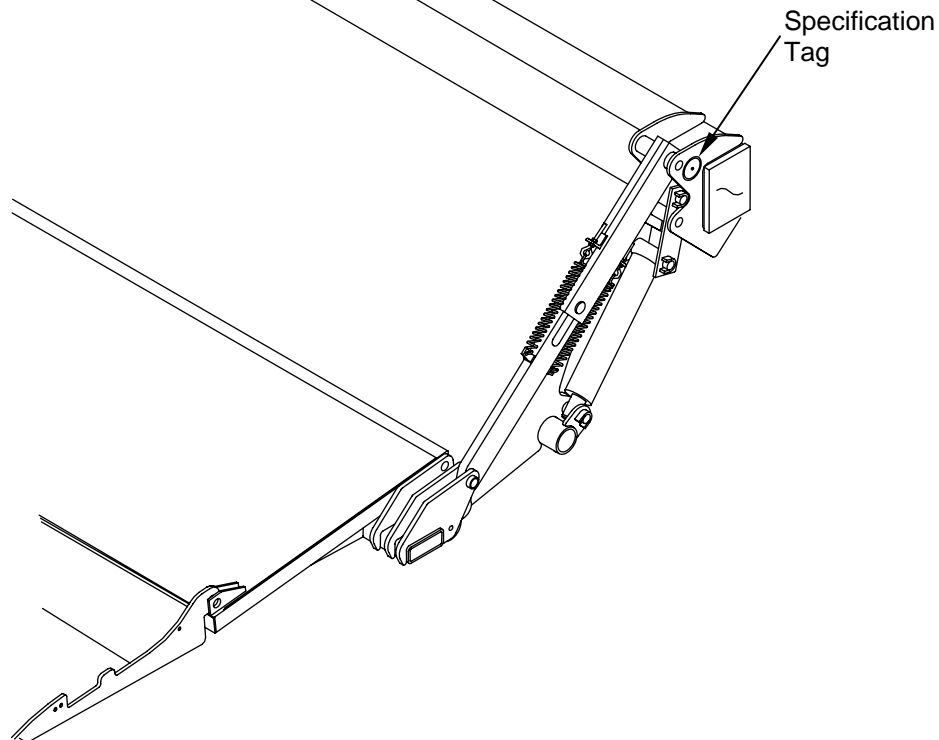
# Chapter 2 Liftgate Terminology

Explanation of Specification Tag

Model	Description	Capacity
LPF 25	Steel Main Deck	2500 lb.
LPF 30	Steel Main Deck	3000 lb.
LPF 40	Steel Main Deck	4000 lb.
LPF 25 A	Aluminum Main Deck	2500 lb.
LPF 30 A	Aluminum Main Deck	3000 lb.
LPF 40 A	Aluminum Main Deck	4000 lb.



GR00241



GR02206

# Chapter 3 Operations Instructions

## TO OPEN PLATFORM

Unlatch transit chain from hook.

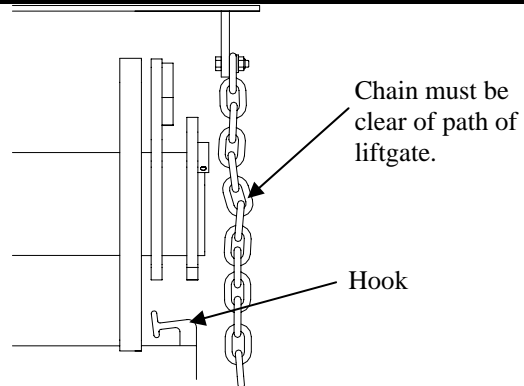
Push Lower Switch to lower platform to ground.

Unfold platform using handle on underside.



**Never force Latch Chain if platform weight is on chain.**

**To slacken chain, push Raise Switch.**

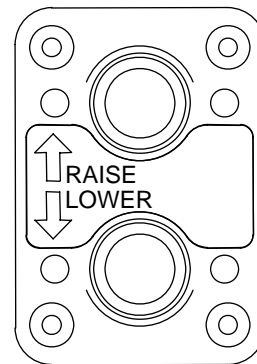


GR02549

## TO OPERATE LIFTGATE

Use Raise and Lower Switch to raise and lower platform.

Load platform as close to vehicle and towards middle of platform as possible. Maximum rated capacity is based on an evenly distributed load on platform flat surface.



GR02094

## TO STORE PLATFORM FOR TRANSIT

Lower platform to ground.

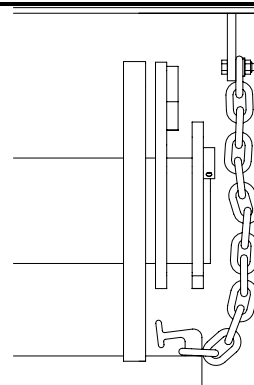
Fold platform.

Raise platform to transit position. Power platform snugly against the bottom of the bed extension.

Latch transit chain to hook, make certain chain is fully engaged, chain must have slack.

### NOTE:

**DO NOT rest gate on chain.**

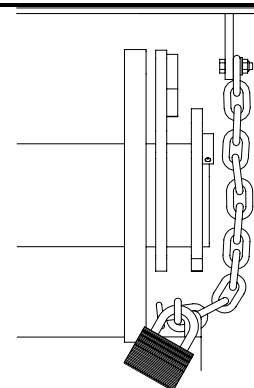


GR02547

## LOCKOUT DEVICE



**To prevent unauthorized use of liftgate, insert a heavy gauge pad lock into first link of latch chain.**



GR02550

# Chapter 4 Preventive Maintenance

Waltco recommends that the C-Series liftgate be inspected at 6 month or 3000 cycle intervals to help assure proper function and operation of the liftgate.

Note: Photocopy the following PM Checklist to help keep track of periodic maintenance on the liftgate. Keep completed form with maintenance records.

For more detailed instructions on the following checklist items, refer to the appropriate sections in this Owner's Manual.



**Do not continue to use liftgate if any points of inspection listed at left, or below, may cause you to think the liftgate is unsafe. Repair immediately.**

**If liftgate is found to be in need of repair or adjustment not covered in this manual, contact your nearest Waltco Distributor.**

## WALTCO LPF-SERIES LIFTGATE PREVENTIVE MAINTENANCE CHECKLIST

PM Interval: 6 Months or 3000 Cycles

Date: \_\_\_\_\_

Vehicle No. \_\_\_\_\_

Mechanic: \_\_\_\_\_

Liftgate S/N: \_\_\_\_\_

Model: \_\_\_\_\_

Check appropriate box below for each step:

### 6 Month Liftgate PM Procedures

1	OK	Repair Required	Corrected	Check for apparent damage to the lifting structure, such as bent or distorted members or cracked welds, which may have resulted from overloading or abuse.
2	OK	Repair Required	Corrected	Check that all pins, bolts and fasteners are tight and secure.
3	OK	Repair Required	Corrected	Check for worn or damaged bearings.
4	OK	Repair Required	Corrected	Check that controls operate properly.
5	OK	Repair Required	Corrected	Check all battery cables and connections (both positive and ground cables) to be sure they are tight and free of corrosion.
6	OK	Repair Required	Corrected	Check that transit chain properly hooks onto transit chain lug.
7	OK	Repair Required	Corrected	Check operation of lockout device.
8	OK	Repair Required	Corrected	Check fold over assist spring and related hardware.
9	OK	Repair Required	Corrected	Check platform tilt is adjusted correctly.
10	OK	Repair Required	Corrected	Check for hydraulic leaks in hydraulic cylinder(s), hoses, fittings, and valves.
11	OK	Repair Required	Corrected	Check oil level in reservoir.
12	OK	Repair Required	Corrected	Check lowering speed of platform.
13	OK	Repair Required	Corrected	Check that all decals are in place and legible.
14	OK	Repair Required	Corrected	Lubricate the liftgate per the "Lubrication Instructions".

### 12 Month Liftgate PM Procedures (Includes steps 1-14 above)

15	OK	Repair Required	Corrected	Inspect Pump Motor for wear or damage.
16	OK	Repair Required	Corrected	Replace Hydraulic Fluid.

# Chapter 4 Preventive Maintenance

## MONTHLY INSPECTION

Operate the liftgate throughout its entire operational cycle. Check for:

- Damage to lifting structure such as bent or distorted members or cracked welds.
- Bent or distorted cylinder pins or damaged cylinder.
- All pivot and cylinder pins are securely in place, undamaged and retained by their proper fasteners (refer to parts drawings in chapter 7, **"PMs and Schematics"**).
- Damaged or worn bearings that pivot and cylinder pins rest in.
- Controls operate correctly (refer to chapter 3, **"Operations Instructions"**)
- Check all power cables, ground cables, and connections
- Clean and tighten all loose connections. Replace any damaged or corroded wires or connectors



**Do not continue to use liftgate if any points of inspection listed at left, or below, may cause you to think the liftgate is unsafe. Repair immediately.**

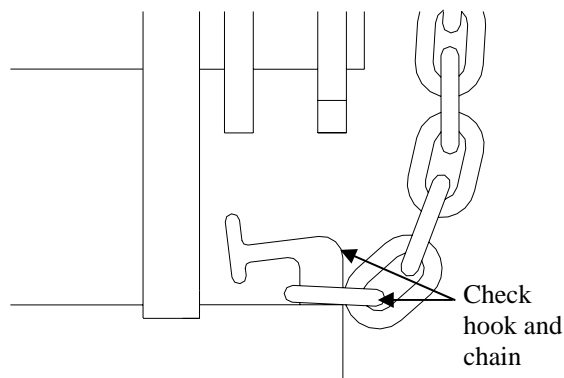
**If liftgate is found to be in need of repair or adjustment not covered in this manual, contact your nearest Waltco Distributor.**

## CHECK LATCH HOOK AND CHAIN

Check for hook and chain distortion or cracking.

Check hook welds for cracking.

Chain must be able to engage hook when platform is in transit position.

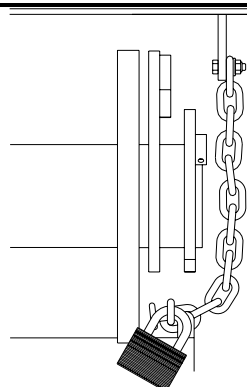


GR02532

## LOCKOUT DEVICE



**To prevent unauthorized use of liftgate, insert a heavy gauge pad lock into first link of latch chain.**



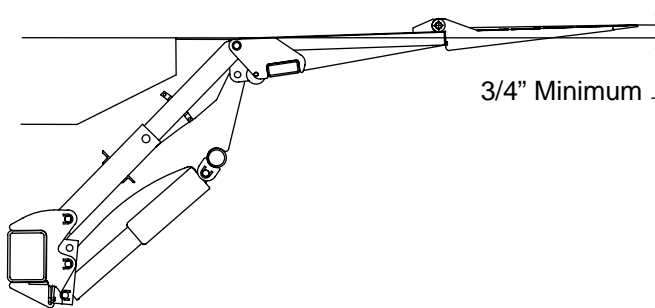
GR02550

# Chapter 4 Preventive Maintenance

## CHECK PLATFORM TILT

Raise platform to bed level and inspect. Trailing edge of platform should be at least 3/4" above bed extension.

Carefully inspect all liftgate components for wear or damage. Replace any damaged or worn components before proceeding.



GR01300

## PLATFORM TILT ADJUSTMENT

Pitch of platform at bed level is set by installation. Adjustment can be accomplished by adding or removing material where pivot blocks rest on stop angles.

Lower liftgate until platform tilts fully toward ground.

To lower platform tip, add material to pivot block.

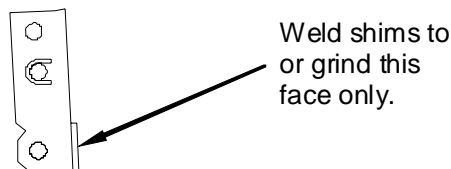
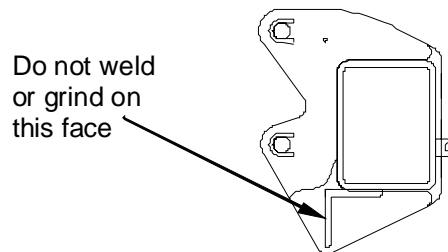
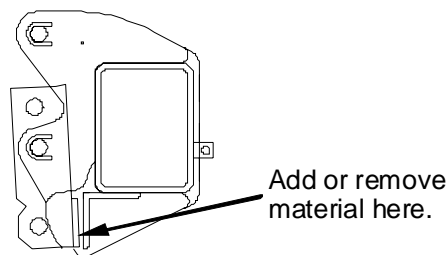
To raise platform tip, remove material from pivot block

### NOTE:

Adjust both pivot blocks equally.

### NOTE:

Adjust in small increments. A 1/8" change on block will result in a 7/8" change on the platform.

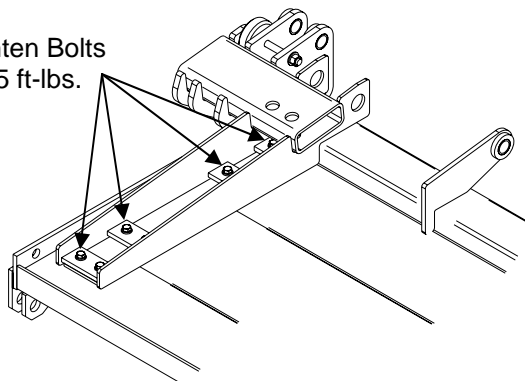


GR01301

## CHECK PLATFORM BOLTS

Check all bolts holding aluminum deck to steel hinge assembly. Tighten to 25 ft-lbs.

Tighten Bolts to 25 ft-lbs.



GR02535

# Chapter 4 Preventive Maintenance

## HYDRAULICS

Inspect for oil leaks in:

Hydraulic cylinder(s)

Hydraulic hoses - Replace hoses if they show signs of excessive abrasion

Hydraulic fittings and valves

Tighten or replace all hydraulic components as may be required to stop oil leakage

## CHECK AND FILL HYDRAULIC RESERVOIR

Lower platform fully to ground.

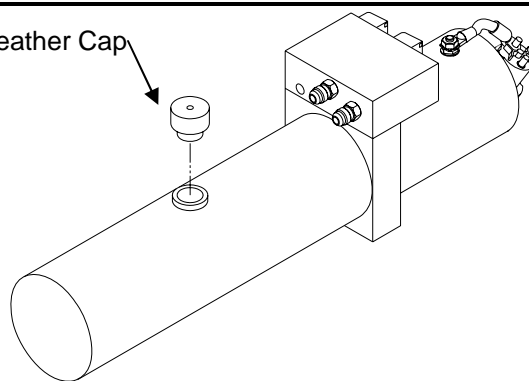
Remove Breather Cap.

Oil level should be 1/2" from top of reservoir.

If low, fill as required. Use appropriate fluid per chart.

Replace Breather Cap.

Breather Cap



GR02633

### Recommended Fluids

Temperature Range	Acceptable Fluids
-10° to 195° F	Mobil DTE 13M Shell Tellus 32T
-25° to 140° F	Mobil DTE 11M Shell Tellus 15T
-40° to 145° F	Mobil Aero HFA Exxon Univis HVI 13
-45° to 200° F	Exxon Univis HVI 26

A good quality SAE 10W motor oil may also be used in temperatures above 32° F.

Fill reservoir

- Fill with recommended fluid or equivalent.
- Fill the reservoir to within 1/2" from the top.

### NOTE:

Do not use the following fluids:

**Brake Fluid**

**Power steering fluid**

**Automatic Transmission Fluid (ATF)**

**There is no speed adjustment on this liftgate.**

Lowering speed is controlled by the pressure compensative valve plumbed at the cylinder.

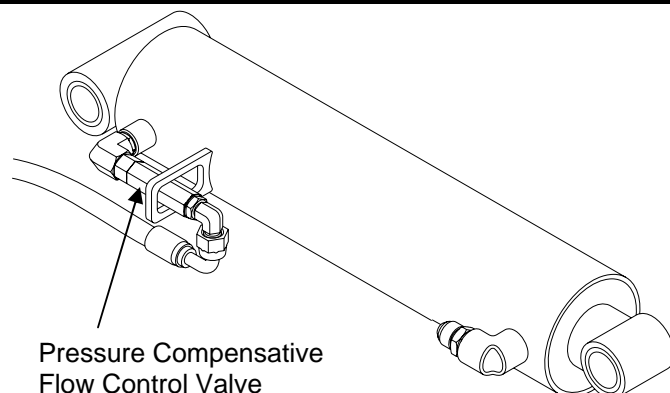
Regardless of weight on platform, liftgate should lower at approximately six (6) inches per second.

$$\frac{\text{Bed Height (inches)}}{6} = \text{Lowering Time (seconds)}$$



**This liftgate must have the correct pressure compensative valve install:**

**LPF = 7010001-7**



Pressure Compensative  
Flow Control Valve

GR02634

# Chapter 4 Preventive Maintenance

## ADJUSTING PLATFORM FOLDING EFFORT

### ADJUSTMENT OF PARALLEL ARM SPRINGS

Adjusting tension of parallel arm springs may improve folding/unfolding of platform.

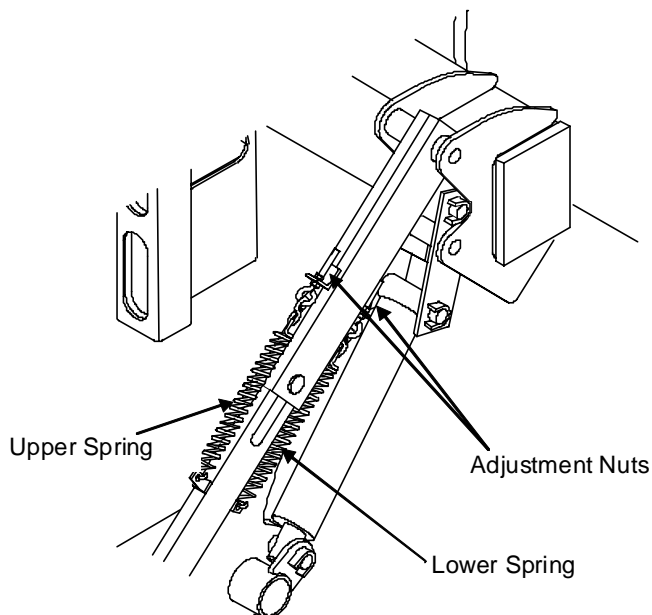
Tighten nuts securely.



**If spring assist is too strong, platform may unfold without assistance when lowering. This is unsafe and MUST BE CORRECTED. Reduce parallel arm spring tension. On higher bed heights it may be necessary to remove one lower spring.**

#### NOTE:

**Spring Adjustment is easiest with platform stored.**



GR01303

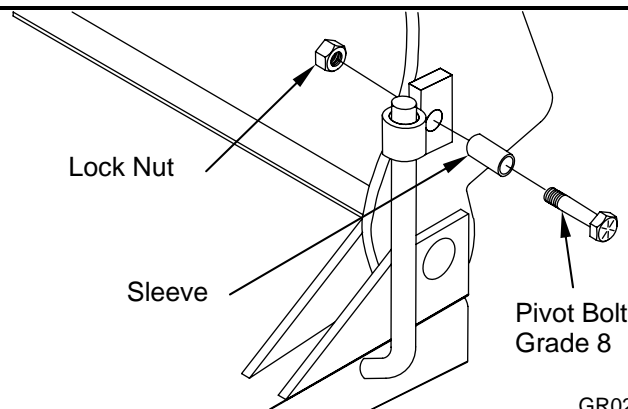
## CHECKING TORSION BAR MECHANISM

Check that Pivot Bolt and Lock Nut are tight.

Assure Torsion Bar Mechanism moves freely.

#### NOTE:

**Torsion Bar Assistance is not adjustable**



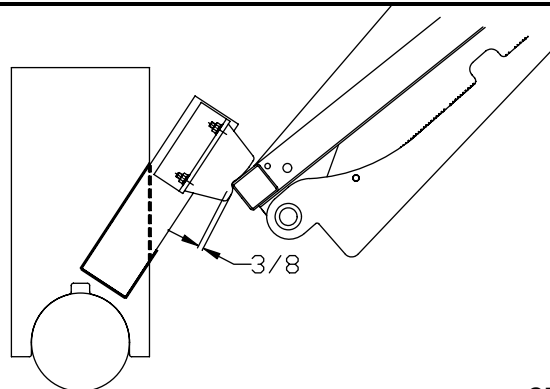
GR02207

## CHECK RUBBER SNUBBERS (IF EQUIPPED)

Raise liftgate to fully closed position, tight against bed extension.

Platform end tube should compress rubber snubber about 3/8". If not, add shims or large washers under snubber pads to obtain this compression.

Snubbers are recommended for Semi-Trailer and Dual Rear Axle applications.



GR01304

# Chapter 4 Preventive Maintenance

## INSPECT DECALS AND LUBRICATE LIFTGATE

Inspect all decals per Chapter 5 of this manual.

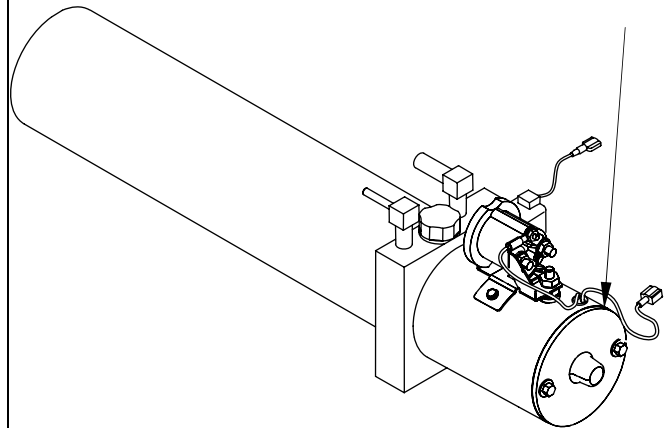
Replace any that are missing or damaged.

Lubricate liftgate per Chapter 6 of this manual.

## SEMI ANNUAL INSPECTION

- Inspect power motor:
- Disconnect battery cable.
- Remove end cover.
- Examine armature brushes for wear. (Brushes should be replaced if less than 1/8" long).
- Clean out all residue from inside of motor housing.
- Apply several drops of light weight machine oil to armature shaft bearing in motor end cover.
- Reassemble motor.

Remove cover to check brushes and clean out motor




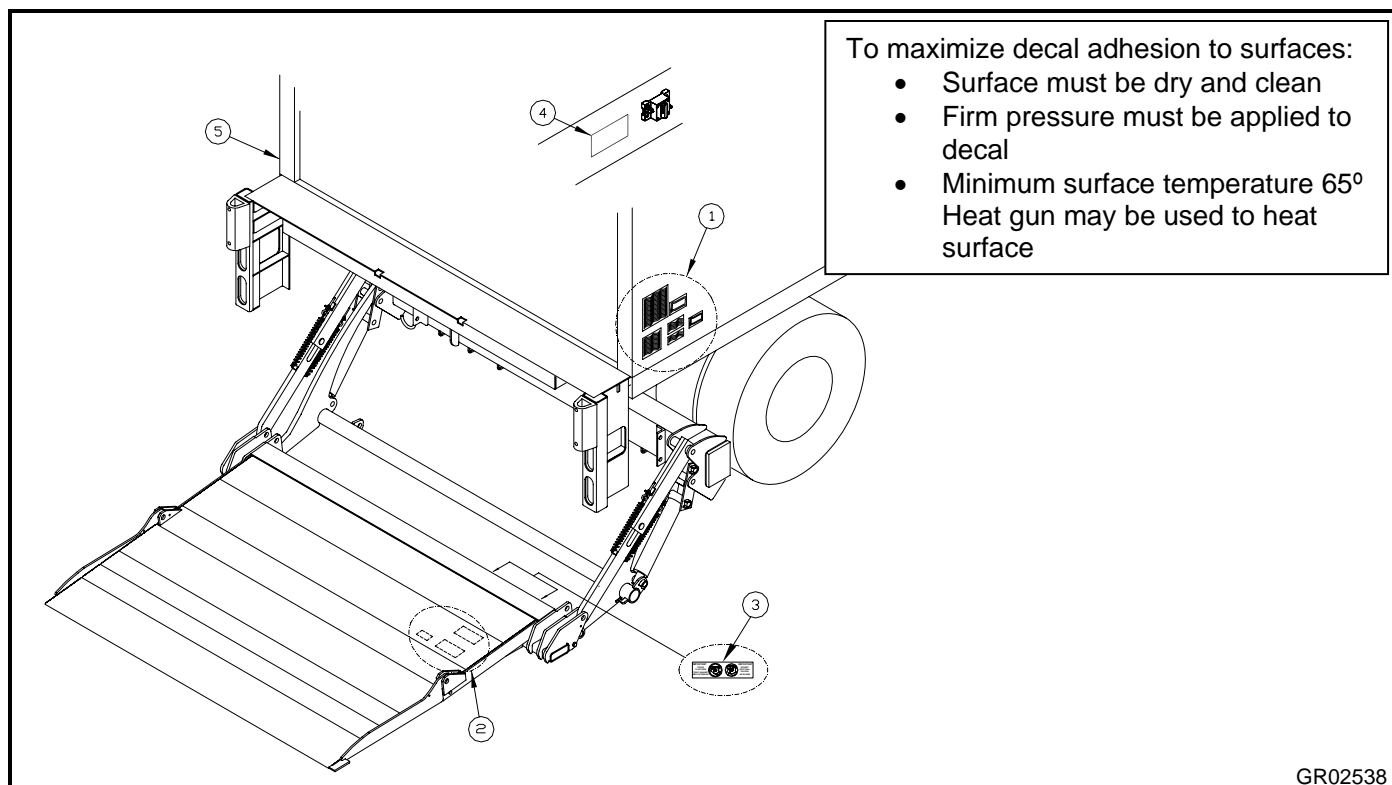
GR02100

# Chapter 5 Placement of Decals



All decals must be in place and legible or all warranties are void.

ITEM	DECAL	QTY	PART NO.	LOCATION
1	Safety Instructions	1	80100850	<b>Locate in a conspicuous place near controls.</b>   <b>If your liftgate is equipped with dual controls, an additional Safety Instruction decal (80100850) is to be placed in a conspicuous place near the second set of controls.</b>  Refer to the following diagram showing decal locations.
	Operation	1	80101529	
	Warning Decal	1	80101370	
	Important Decal	1	80100828	
	Motor Thermal Switch	1	80101480	
	2500 lb Capacity	1	80100255	
	3000 lb Capacity		80100257	
	4000 lb Capacity		80100260	
	Caution Decal	1	75089296	
2	Caution Decal	1	75089295	<b>Locate near platform handle</b> (positioned under platform so as to be read when platform is being unfolded into loading position)
	Caution Decal	1	75089296	
	2500 lb Capacity	1	80100255	
	3000 lb Capacity		80100257	
	4000 lb Capacity		80100260	
3	Store Tight Decal	1	80101404	<b>Locate on back of deck on curb side</b> (visible, and read, when platform is stored)
4	Warning Decal	1	80100829	<b>Locate next to liftgate circuit breaker.</b> In applications where more than one circuit breaker is used, this decal must be placed in both locations
5	Caution Decal	1	75089296	<b>Locate in a conspicuous place on driver side.</b>



GR02538

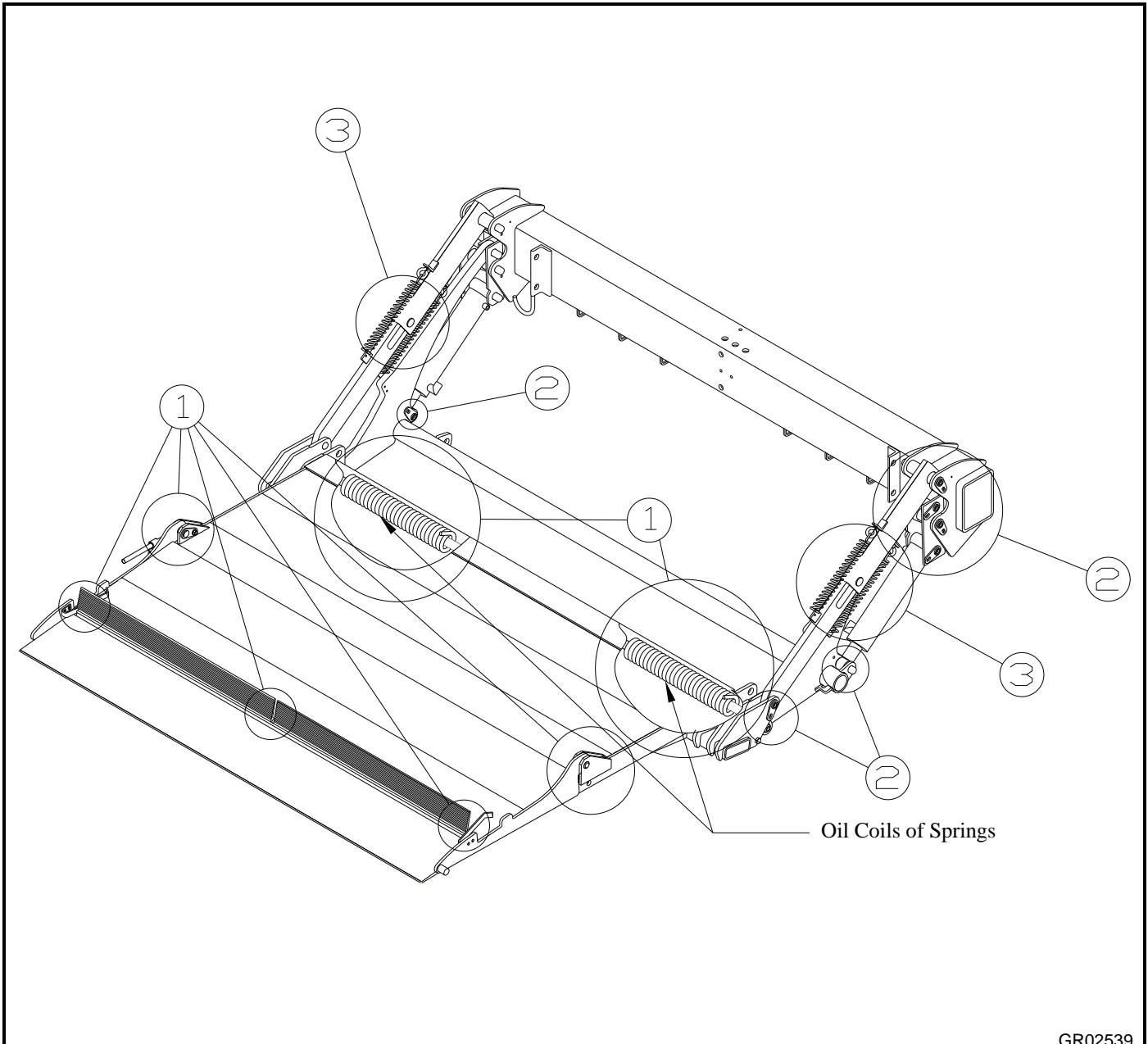
# Chapter 6 Lubrication Instructions

The liftgate should be lubricated every 120 days.

#1 - Oil with a light weight machine oil (do not use on bearings in arms, platform, pivot blocks, or cylinders).

#2 - These are bearings that do not require grease, however, bearings may be greased through pins to prevent corrosion of pins, reduce friction, and increase life of bearings.

#3 - Grease parallel arm slide with heavy chassis grease.



GR02539

# Chapter 7     PM's & Schematics

	PM Number
PLATFORM ASSEMBLY (ALUMINUM).....	PM-676C
PLATFORM ASSEMBLY (STEEL / ALUMINUM) .....	PM-780
MOUNT FRAME ASSEMBLY .....	PM-392G
BED EXTENSION AND LIGHT KIT OPTION .....	PM-393B
HYDRAULIC AND ELECTRICAL LAYOUT .....	PM-394F
SCHEMATICS.....	

ITEM	PART NUMBER	QTY	DESCRIPTION
—	2251007-1	1	Platform Complete, 60" x 80" w/CS
	2251002-2	1	Platform Complete 60" x 80"
A	22511007	1	Deck Assembly Complete
1	22516000	1	Deck Hinge Assembly
2	22518000	1	Deck, Aluminum Weldment
3	22513066	1	Deck Extension, 60" Platform
	22513067		Deck Extension, 60" Platform w/Cart Stop
4	22514300	2	Torsion Spring, Platform
5	75089542*	2	Coiled Pin 1/2" x 2" lg.
6	7500019-2*	2	Socket Hd. Cap Shoulder Screw 3/8" x 2-1/2" lg. (5/16"-18 Thread)
7	22570200*	2	Pin
8	23570300*	2	Pin
9	75086227	2	Hex Bolt, 1/2"-20 x 5.5" lg. Grade 8
10	75085110	2	Hex Nut, 1/2"-20
11	22519900	2	Roller
12	22610800*	2	Pin Assembly
13	75086055*	4	3/8-16 x 3/4" lg. Hex Bolt, Grade 5
14	22513803	1	Shaft
15	22515453	1	Cart Stop Driver Side
16	22515403	1	Cart Stop Curb Side
17	22515100	2	Spring Bar
18	75086924	6	Self Tapping Screw, 1/4"-20 x 1" lg.
19	22515300	1	Torsion Spring, Cart Stop, CS
20	22515200	1	Torsion Spring, Cart Stop, DS
21	75088131	3	Washer, 7/8" O.D. X 1/2" I.D. X .073" lg.
22	75085005	4	3/8"-16 Serrated Hex Nut
23	75086058	4	3/8"-16 x 1" lg. Hex Bolt
24	85803391◇	4	Bearing, 1" ID x 1" lg.
25	22617100	1	Torsion Bar
26	22517300	1	Pivot Assembly, Torsion Bar
27	7500010-12	1	3/8"-16 Hex Bolt
27A	22517500	1	Tube
28	10010142◇	2	Bearing, 1" ID x 3/4" lg.

ITEM	PART NUMBER	QTY	DESCRIPTION
29	7500002-6**	12	Hex Flange Screw, 3/8-16 x 1-1/4" Grade 8
30	75098247		Thread Locking Compound
31	22515500	2	Cart Stop Retainer
32	75085193	1	3/8"-16 Hex Expanding Lock Nut
33	75088081*	4	3/8" Lock Washer
34	75088053*	4	3/8" Flat Washer

\* Included in pin replacement kit No. 80001190

◇Included in bearing replacement kit No. 80000731

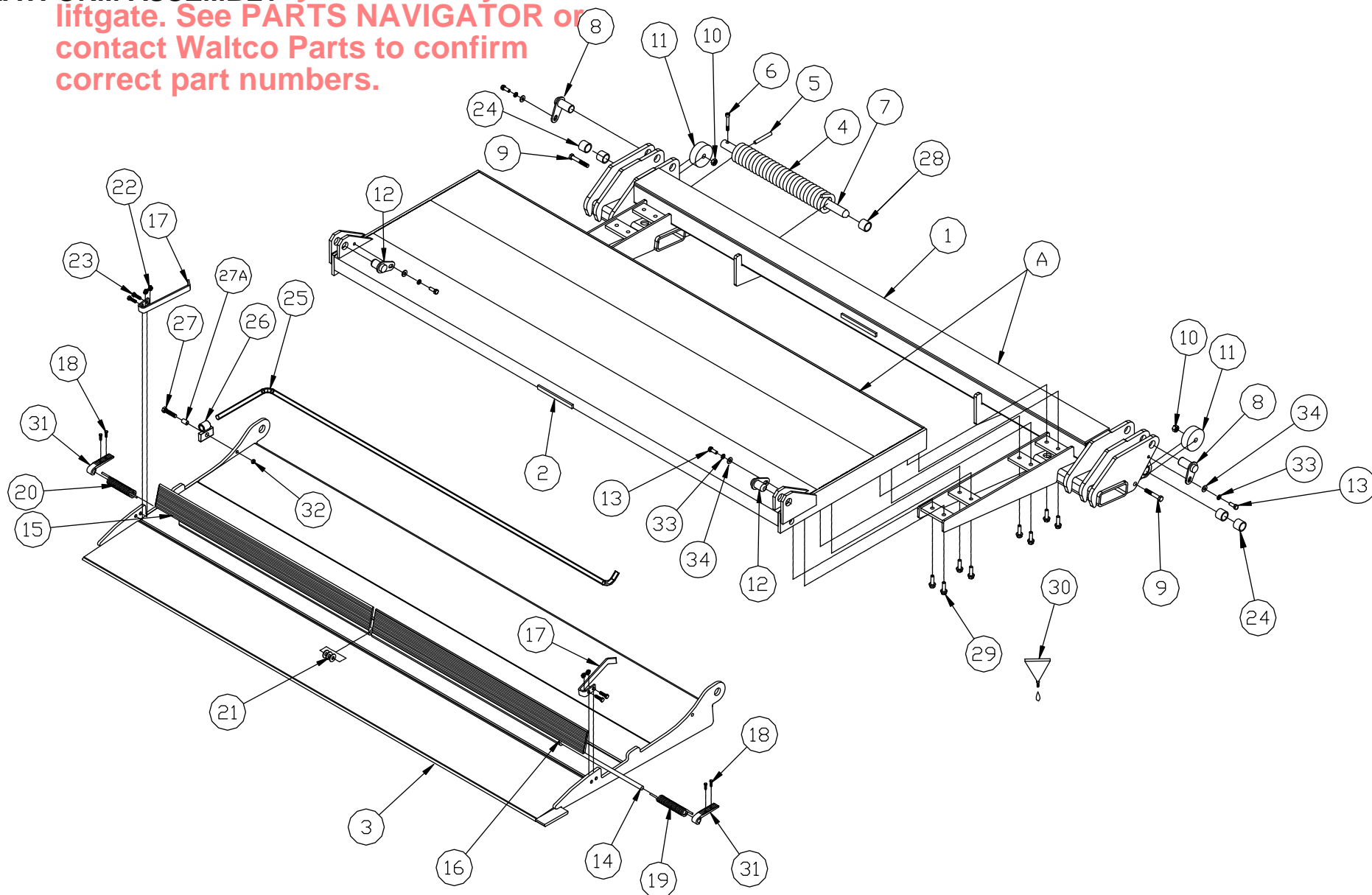
\*\*Torque Bolts to 25 ft-lbs.

**WALTCO**  
**TRUCK EQUIPMENT CO.**  
**LPF-25, 30, 40**

REVISED: 1-21-2010  
E.O. 6346  
REV. 03

**PM-676C**

**IMPORTANT:**  
**PLATFORM ASSEMBLY**  
 Parts shown may not match your liftgate. See PARTS NAVIGATOR or contact Waltco Parts to confirm correct part numbers.



**WALTCO**  
 TRUCK EQUIPMENT CO.  
 LPF-25, 30, 40

REVISED: 1-21-2010  
 E.O. 6346  
 REV. 03

**PM-676C**

ITEM	PART NUMBER	QTY	DESCRIPTION
—	2251008-1	1	LPF-25, 30 Platform Complete, 60" x 80"
	2251008-2		LPF-25, 30 Platform Complete, 60" x 80" C/S
	2261008-1		LPF-40 Platform Complete, 60" x 80"
	2261008-2		LPF-40 Platform Complete, 60" x 80" C/S
1	22511008	1	Deck Assembly, LPF-30 (Steel)
	22611008		Deck Assembly, LPF-40 (Steel)
2	22513066	1	Deck Extension (Aluminum)
	22513067		Deck Extension w/Cart Stops (Aluminum)
3	22514300	2	Torsion Spring, Platform
4	75089542*	2	Coiled Pin 1/2" x 2" lg.
5	7500019-2*	2	Socket Hd. Cap Shoulder Screw 3/8" x 2-1/2" lg. (5/16"-18 Thread)
6	22570200*	2	Pin
7	23570300*	2	Pin
8	75086227	2	Hex Bolt, 1/2"-20 x 5.5" lg. Grade 8
9	75085110	2	Hex Nut, 1/2"-20
10	22519900	2	Roller
11	1000101-4*	2	Pin Assembly
12	75086055*	4	3/8-16 x 3/4" lg. Grade 5
13	22513803	1	Shaft
14	22515453	1	Cart Stop Driver Side
15	22515403	1	Cart Stop Curb Side
16	22515100	2	Spring Bar
17	75086924	4	Self Tapping Screw, 1/4"-20 x 1" lg.
18	22515300	1	Torsion Spring, Cart Stop, CS
19	22515200	1	Torsion Spring, Cart Stop, DS
20	75088131	3	Washer, 7/8" O.D. X 1/2" I.D. X .073" lg.
21	22515500	2	Cart Stop Retainer
22	75085005	4	3/8"-16 Serrated Hex Nut
23	75086058	4	3/8"-16 x 1" lg. Hex Bolt
24	85803391◇	4	Bearing, 1" ID x 1" lg.
25	22517100	1	Torsion Bar (Steel / Aluminum Platforms)
	23317100		Torsion Bar (Steel / Aluminum Platforms with Cart Stops)

ITEM	PART NUMBER	QTY	DESCRIPTION
26	22517300	1	Pivot Assembly, Torsion Bar
27	7500010-12	1	3/8"-16 Hex Bolt
28	75085193	1	3/8"-16 Hex Expanding Lock Nut
29	22517500	1	Tube
30	10010142◇	2	Bearing, 1" ID x 3/4" lg.
31	75088081*	4	3/8" Lock Washer
32	75088053*	4	3/8" Flat Washer

\* Included in pin replacement kit No. 80001190

◇ Included in bearing replacement kit No. 80000731

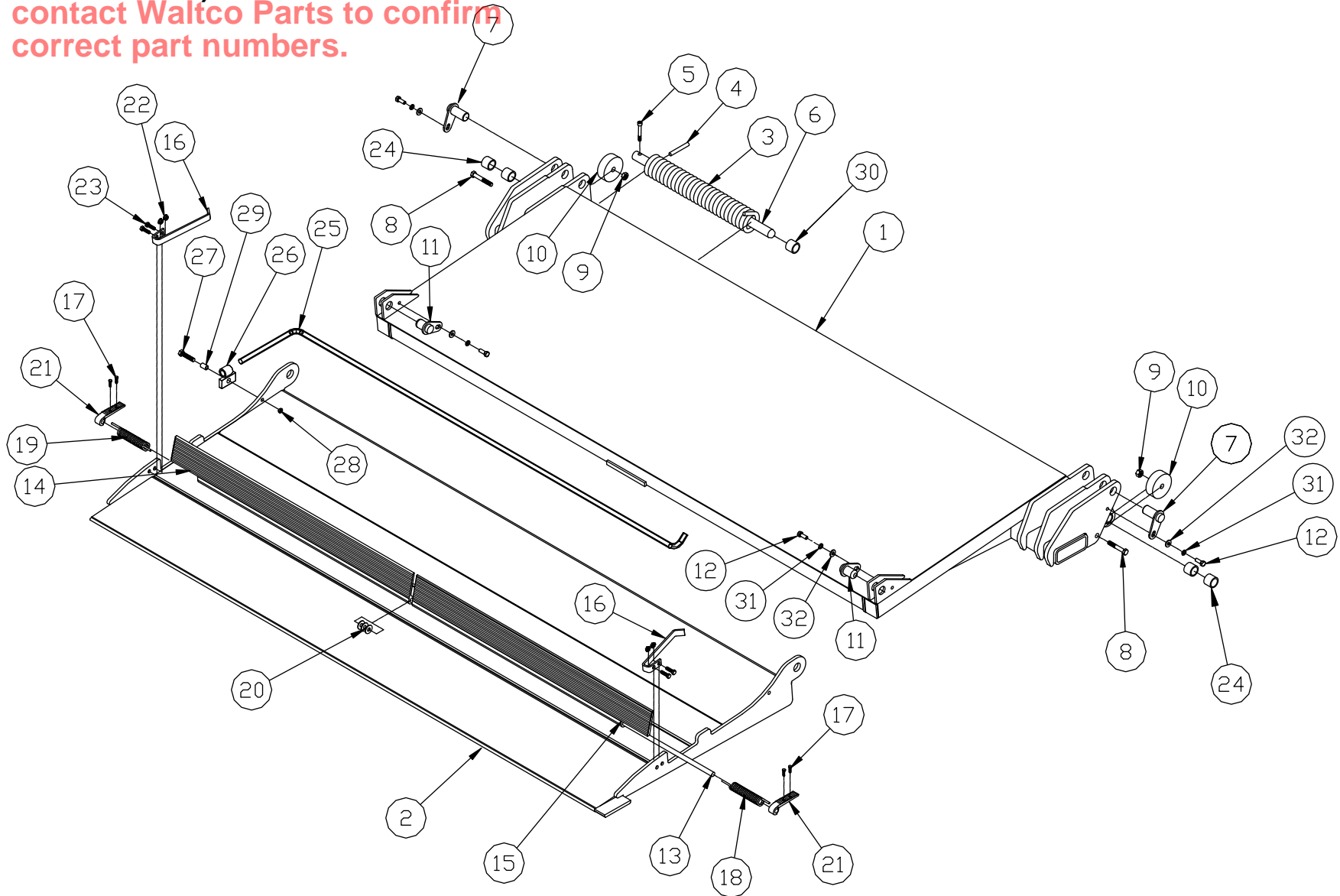
\*\*Torque Bolts to 25 ft-lbs.

**WALTCO**  
**TRUCK EQUIPMENT CO.**  
**LPF-25, 30, 40**

REVISED: 1-21-2010  
E.O. 6346  
REV. 03

**PM-780**

**IMPORTANT:**  
 Parts shown may not match your  
 platform. See PARTS NAVIGATOR or  
 contact Walco Parts to confirm  
 correct part numbers.



**WALCO**  
 TRUCK EQUIPMENT CO.  
 LPF-25, 30, 40

REVISED: 1-21-2010  
 E.O. 6346  
 REV. 03

**PM-780**

ITEM	PART NUMBER	QTY	DESCRIPTION
1	22520003	1	Mount Tube Assembly
2	22530003	1	Lift Arm Assembly
3	22555001	1	Parallel Arm Assembly, Curb Side
4	22555051	1	Parallel Arm Assembly, Driver's Side
4A	20270400	4	Extension Spring
4B	20252200	4	Eye Bolt and Nut
4C	75085003	4	Hex Nut 5/16"-18
4D	75089350	4	"S" Hook
5	22560052	1	Pivot Block Assembly, Driver's Side
6	22560002	1	Pivot Block Assembly, Curb Side
7	22570190	2	Mount Plate
8	75080070	2	Strain Relief
9	75080071	2	Strain Relief Nut
10	22522110	1	Cover Assembly
11	23570105*	2	Pin Assembly
12	27371002*	4	Pin Assembly
13	23370300*	2	Pin Assembly
14			
15	85803391◇	14	Bearing, 1" I.D. x 1" lg.
16	10010144◇	2	Bearing, 1" I.D. x 1-3/4" lg.
17	23570100*	2	Pin Assembly
18	22580060	2	Hydraulic Cylinder
19	75086924	2	Hex Bolt, 1/4-20 x 1" lg., Self-Threading
20	10010140◇	2	Bearing, 1" I.D. x 1" lg.
21	22522201	1	Cover Gasket
22	37432201	2	Bar, .25 X .125, 2.00
23	75089574	1	Hole Plug, 7/8"
24	75086252	1	Stud, 3/8-16" X 2-1/2"
25	75085005	3	3/8" Hex Nut Serrated
26	39035700	1	Guide Bearing
27	22540000	1	Under Ride Bumper Weldment, 102" (Optional)
	22540050		Under Ride Bumper Weldment, 96" (Optional)
28	22541000	2	Mount Plate, Under Ride (Optional)

ITEM	PART NUMBER	QTY	DESCRIPTION
29	22541100	4	Hanger Bar, Under Ride (Optional)
30	22542000	2	Pin Assembly, Under Ride (Optional)
31	75085014	4	Hex Nut, 3/4"-10 (Optional)
32	75086055*	12	Hex Screw, 3/8"-16 x 3/4" lg. Grade 5
33	75086180	4	Hex Screw, 3/4"-10 x 2" lg. (Optional)
34	75088061	8	Washer, 1" (Optional)
35	75088081*	12	Lock Washer, 3/8"
36	75088087	4	Lock Washer, 3/4" (Optional)
37	75089541	8	Spring Pin (Optional)
38	85803105	4	Pin (Optional)
39	22599300	2	Up-Stop Angle
40	27511460	2	Steel Angle
41	34036750	2	Rubber Pad
42	75086924	2	Self Tapping Bolt, 1/4-20x1"
43	75088051	2	Flat Washer, 1/4"
44	75088053*	10	Flat Washer, 3/8"

\* Included in pin replacement kit No. 80001190

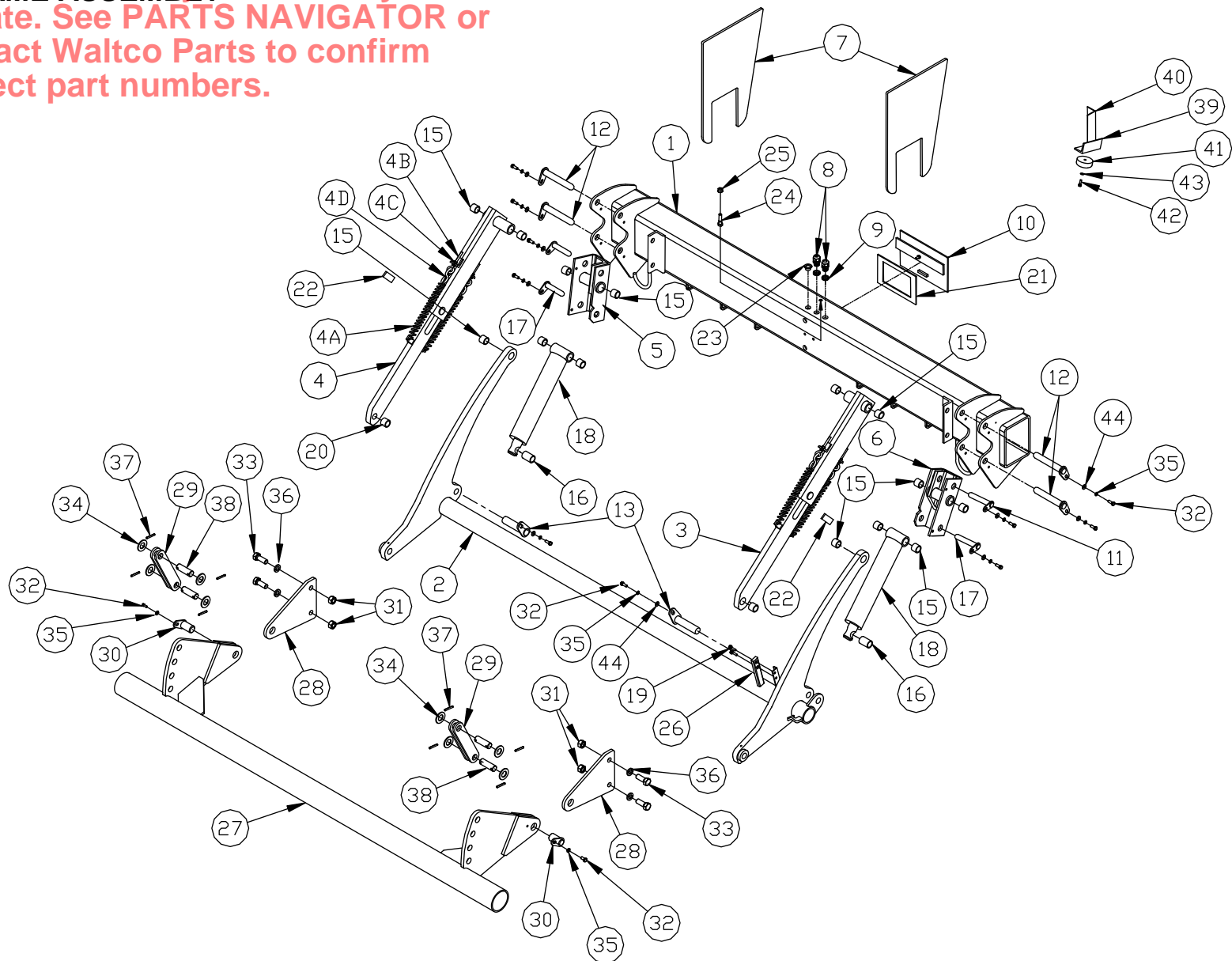
◇ Included in bearing replacement kit No. 80000731

**WALTCO**  
**TRUCK EQUIPMENT CO.**  
**LPF-25, 30, 40**

REVISED: 1-21-2010  
E.O. 6346  
REV. 03

**PM-392G**

**IMPORTANT:**  
**MOUNT FRAME ASSEMBLY** Parts shown may not match your liftgate. See **PARTS NAVIGATOR** or contact Waltco Parts to confirm correct part numbers.



**WALTCO**  
TRUCK EQUIPMENT CO.  
LPF-25, 30, 40

REVISED: 1-21-2010  
E.O. 6346  
REV. 03

**PM-392G**

ITEM	PART NUMBER	QTY	DESCRIPTION
1	22561500 <sup>a</sup>	1	Bed Extension Complete (96" Trucks)
	22561550 <sup>a</sup>	1	Bed Extension Complete (102" Trucks)
2	22597001 <sup>b</sup>	1	Dock Bumper, R.H. For Lights (Option)
3	22597051 <sup>c</sup>	1	Dock Bumper, L.H. For Lights (Option)
4	22597002 <sup>c</sup>	1	Dock Bumper, R.H. (Option)
5	22597052 <sup>c</sup>	1	Dock Bumper, L.H. (Option)
6	26297600 <sup>f</sup>	2	Rubber Bumper (Option)
7	75085012 <sup>f</sup>	4	Hex Nut, 5/8"-11 (Option)
8	75088057 <sup>f</sup>	4	Washer 5/8" (Option)
9	75088085 <sup>f</sup>	4	Lock Washer 5/8" (Option)
10	75086155 <sup>f</sup>	4	Hex Bolt, 5/8"-11 x 2" lg. (Option)
11	22597102 <sup>b</sup>	4	Tail Light Bracket (Option)
12	75086732 <sup>b</sup>	8	Machine Screw, #10-32 x 1" lg. (Option)
13	75085000 <sup>b</sup>	8	Hex Nut, #10-32 (Option)
14	22575200 <sup>b</sup>	2	Harness, 2 Lamps (Option)
15	75089376 <sup>b</sup>	4	Light Grommet (Option)
16	75089374 <sup>b</sup>	2	Backup Light (Option)
17	75089373 <sup>b</sup>	2	Tail Light ST & T (Option)
18	75086218	1	Hex Bolt, 3/8"-16 x 1-1/4" lg. Gr. 8
19	22598101	1	Chain
20	75088053	1	Washer, 3/8"
21	75085193	1	Nut, Locking, 3/8"-16
22	22597003 <sup>g</sup>	1	Dock Bumper, R.H., 2-Step (Option)
23	22597053 <sup>g</sup>	1	Dock Bumper, L.H., 2-Step (Option)
24	22597004 <sup>h</sup>	1	Dock Bumper, R.H., 2-Step For Lights <48" Bed Height (Option)
25	22597054 <sup>h</sup>	1	Dock Bumper, L.H., 2-Step For Lights <48" Bed Height (Option)
26	22597005 <sup>i</sup>	1	Dock Bumper, R.H., 2-Step For Lights >48" Bed Height (Option)
27	22597055 <sup>i</sup>	1	Dock Bumper, L.H., 2-Step For Lights >48" Bed Height (Option)

**IMPORTANT:**  
Parts shown may not match your  
truck. See PARTS NAVIGATOR or  
contact Walco Parts to confirm  
correct part numbers.

<sup>a</sup> Bed Extension Installation Kit No. 80001088 required for mounting.

<sup>b</sup> Included in Super Duty Dock Bumper W/4 Lamp Light Kits No. 22596001 and No. 22596003

<sup>c</sup> Included in Super Duty Dock Bumper Kit No. 22596002

<sup>f</sup> Included in Rubber Bumper Kit No. 22596011

<sup>g</sup> Included in 2-Step Super Duty Dock Bumper Kit No. 22596006

<sup>h</sup> Included in 2-Step Super Duty Dock Bumper W/4 Light Kits <48" Bed Height No. 22596004 and No. 22596007

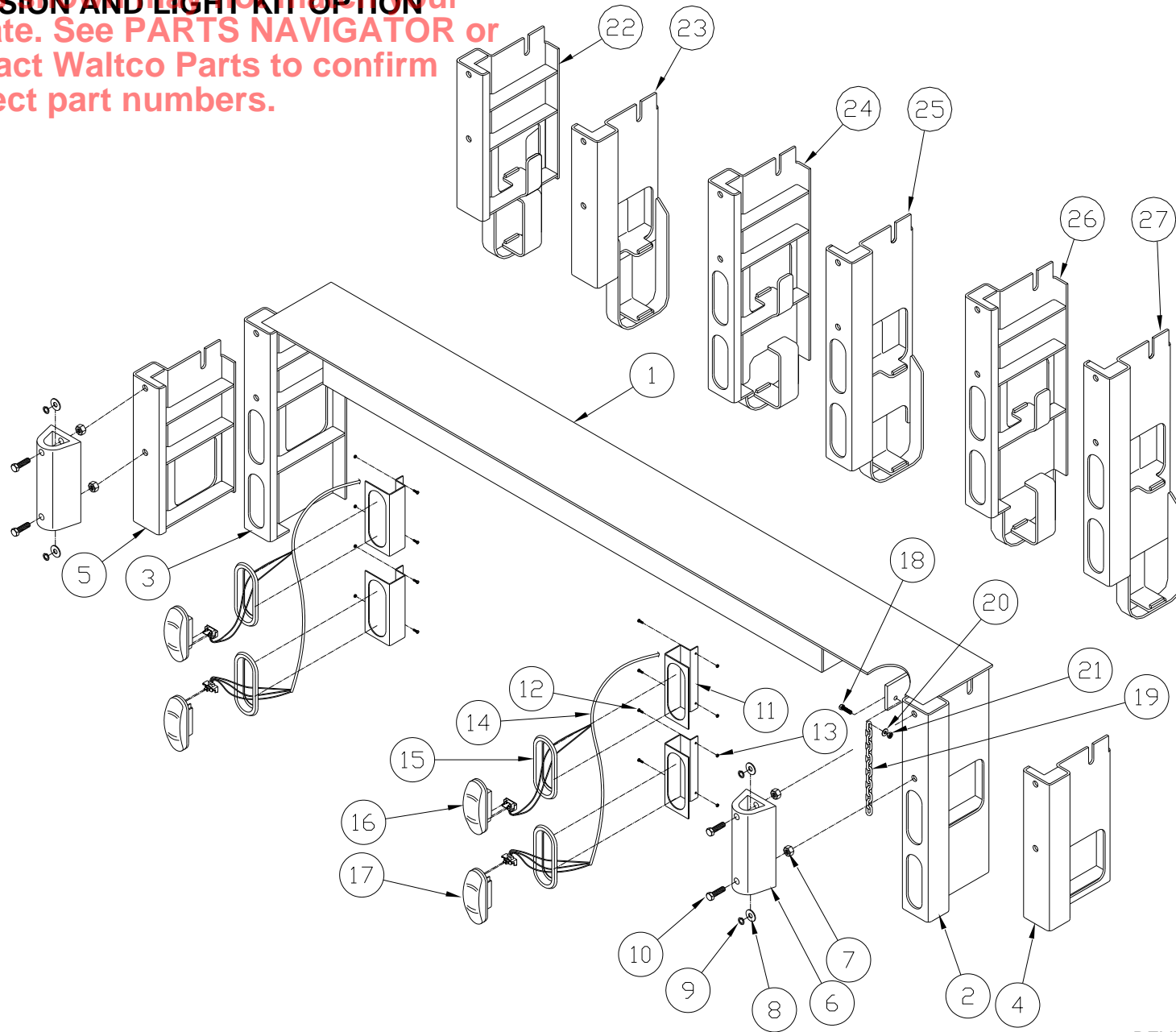
<sup>i</sup> Included in 2-Step Super Duty Dock Bumper W/4 Light Kits >48" Bed Height No. 22596008 and No. 22596008

**WALTCO**  
TRUCK EQUIPMENT CO.  
LPF-SERIES

REVISED: 7/27/09  
E.O. 6169A  
REV. 01

**PM-393B**

**IMPORTANT:**  
**BED EXTENSION AND LIGHT KIT OPTION**  
 Parts shown may not match your liftgate. See **PARTS NAVIGATOR** or contact Waltco Parts to confirm correct part numbers.



**WALTCO**  
 TRUCK EQUIPMENT CO.  
 LPF-SERIES

REVISED: 7/27/09  
 E.O. 6169A  
 REV. 01

**PM-393B**

ITEM	PART NUMBER	QTY	DESCRIPTION
1	70430420	1	Pump Unit, 2200 psi
A	7043002-1	1	Motor
B	10195506	1	Cable Assembly, 6"
C	70400078	1	Motor Solenoid
D	70401404	1	Breather
E	70400080	1	Solenoid Valve, 2 way – 2 position
F	70400079	1	Solenoid Valve, 4 way – 2 position
G	75089853	1	5 Amp Fuse
H	10099309	1	Inline Fuse Assembly (Includes Fuse 75089853)
J	75083120	2	Adapter, 3/8" M JIC x 3/8" M SAE-ORB
K	10099312	1	Power Down Module
2	22529002	1	Slide Tray Assembly
3	75086036	2	Screw, 5/16"-18 x 1"
4	75083123	2	Hose Assembly, 60"
5	75083122	2	Hose Assembly, 76"
6	10195579	1	Cable Assembly, 79"
7	75086853	1	Self Tapping Screw, 5/16" x 3/4" lg.
8	75085005	4	Hex Nut, 3/8"-16
9	75086056	3	Hex Bolt, 3/8"-16 x 1" lg.
10	75080070	2	Strain Relief, Water Tight
11	75080071	2	Nut, Strain Relief, 1/2" NPT
12	75083121	4	Washer, Tooth Lock, 3/4"
13	75089574	1	Hole Plug
14	75083126	2	Hose Assembly, 49"
15	75083118	2	Bulkhead Tee Fitting, 1/2" JIC
15A*	-----	2	Bulkhead Tee
15B*	-----	2	Bulkhead Nut
16	75089300	6	Cable Tie, 8"
17	27395001	1	3/8" Stud Terminal
18	10195887	1	Cable Assembly, 87"
19	75086252	1	3/8"-16 x 2-1/2" lg. Stud
20	22580060	2	Hydraulic Cylinder
21	85803544	2	Nylon Abrasion Sleeve

ITEM	PART NUMBER	QTY	DESCRIPTION
23	10098423	1	Control Cord Assembly
24	10099323	1	Switch with 15' Cord
25	75086860	4	Self Tapping Screw, #8 x 3/4" lg.
26	75088081	2	Lock Washer, 3/8"
27	75083120	2	Adapter, 3/8" M SAE-ORB x 3/8" M JIC
28	70401202	2	Screw, Self-Tapping #10-24 x 3/8" lg.
29	75088052	2	Washer, 5/16"
30	7500059-1	2	Elbow, 90, 3/8" M SAE-ORB x 3/8" F SAE-ORB
31	7010001-7	2	Comp Valve, 2.25 GPM
32	75082869	2	Elbow, 90, 3/8" M SAE-ORB x 3/8" M 37 Deg Flare

\* INCLUDED IN ITEM 15

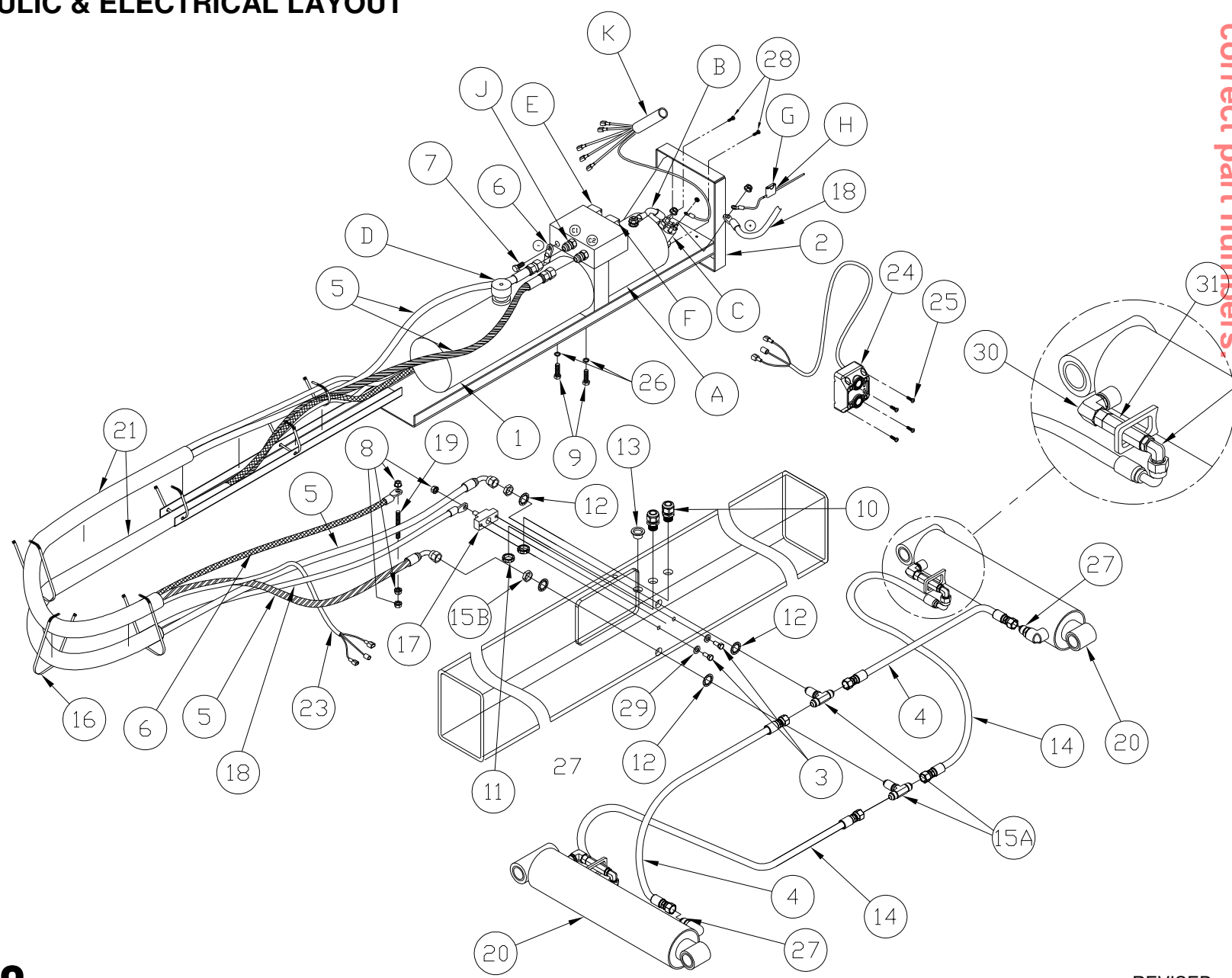
**WALTCO**  
TRUCK EQUIPMENT CO.  
LPF SERIES

REVISED: 5/22/09  
E.O. 6207  
REV. 03

**PM-394F**

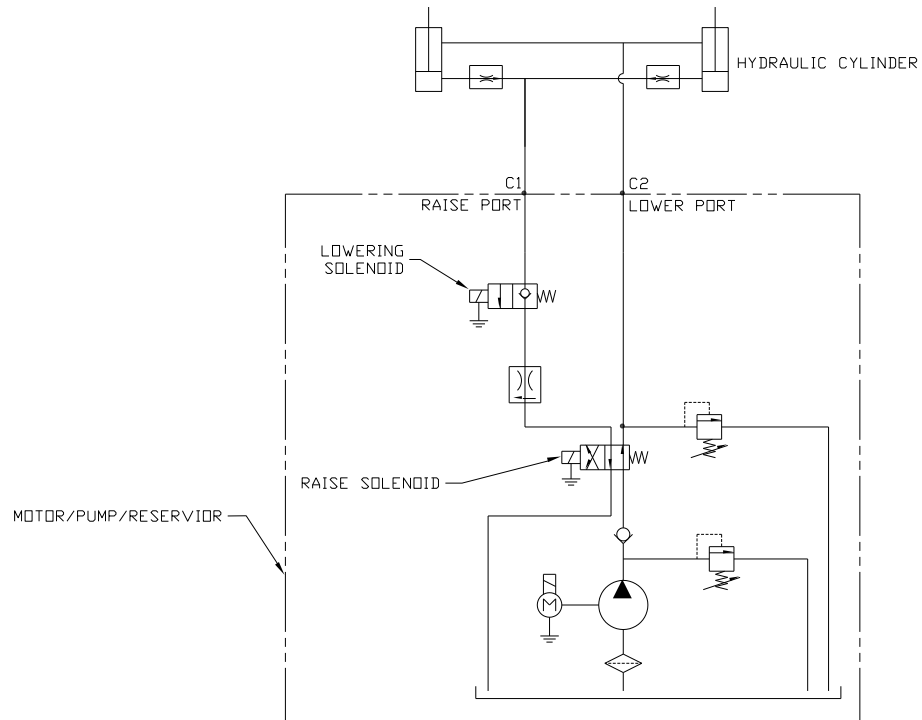
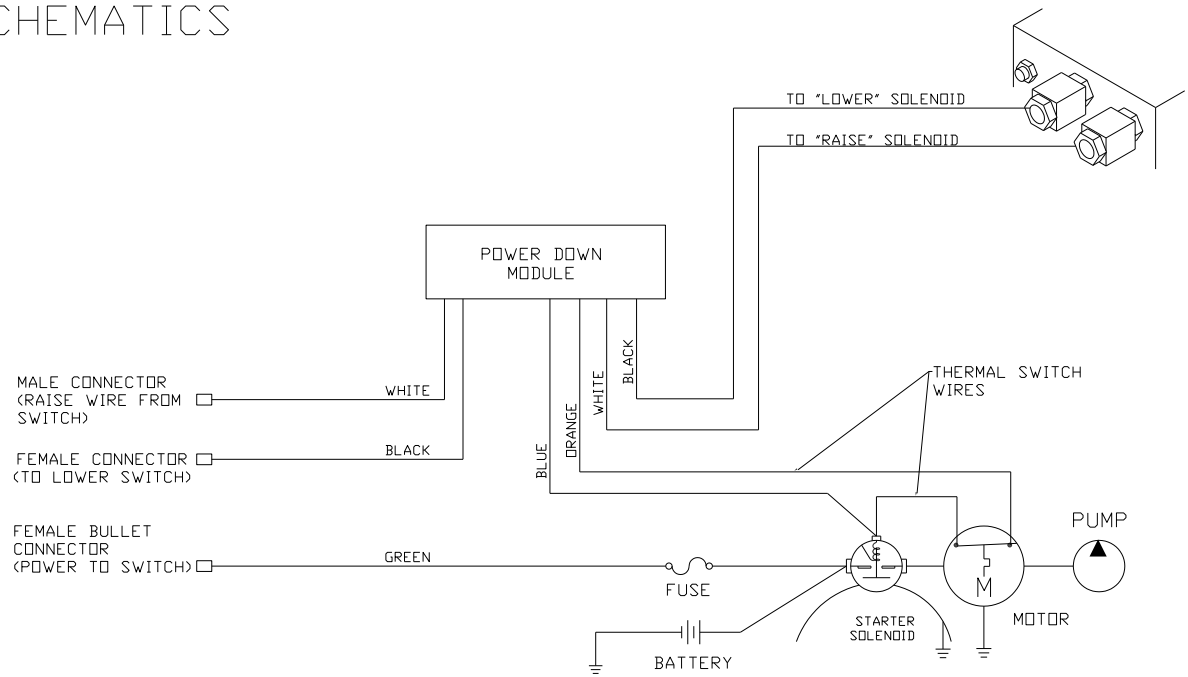
**IMPORTANT:**  
 Parts shown may not match your  
 liftgate. See PARTS NAVIGATOR or  
 contact Walco Parts to confirm  
 correct part numbers.

HYDRAULIC & ELECTRICAL LAYOUT



**IMPORTANT:**  
Parts shown may not match your  
liftgate. See **PARTS NAVIGATOR** or  
contact Walto Parts to confirm  
correct part numbers.

# SCHEMATICS



GR02540

# Chapter 8 – How To Order Parts

**Repairs should be made only by authorized mechanics using WALTCO Replacement parts.**

**When ordering repair or replacement parts, please include all the information asked for below. If this information is not available, a complete written description or sketch of the required part will help WALTCO identify and deliver the needed part to you.**

---

## **THE FOLLOWING INFORMATION MUST BE INCLUDED:**

1. SERIAL NUMBER - [WALTCO liftgate serial numbers can be found on the Specification Tag attached to the mount frame. (On older units the Specification Tag is located on the side or bottom of the platform.)]
2. MODEL NUMBER - [Or capacity]
3. PLATFORM SIZE

---

## **THEN INCLUDE THE FOLLOWING INFORMATION:**

4. PART NUMBERS
5. DESCRIPTION
6. QUANTITY REQUIRED

---

## **MAIL, E-MAIL OR PHONE YOUR REQUEST TO:**

Waltco Truck Equipment Co.  
285 Northeast Avenue  
Tallmadge, OH 44278  
1-800-411-5685  
FAX: 1-800-411-5684  
E-MAIL: parts@waltco.com

---

**ALL PARTS ARE F.O.B. FROM THE SHIPPING FACTORY**

---

## **PLEASE NOTE:**

**To assure you of continuing and effective quality control, our warranty policy permits replacement of hydraulic cylinders, valves and motor pump units when their factory seals are intact. Parts under warranty will be exchanged promptly after careful inspection of the returned assemblies.**

---

This page left intentionally blank.



Every vehicle that has a WALTCO Liftgate must have legible **WARNING AND OPERATION DECALS** clearly posted on the vehicle and an **OWNER'S MANUAL** in the vehicle at all times as a guide for proper operation and maintenance.

Additional **WARNING DECALS**, **OPERATION DECALS** and **OWNER'S MANUALS** can be obtained from **WALTCO TRUCK EQUIPMENT COMPANY**.

---

**NOTE:**

**When ordering, give model  
and serial number of the liftgate.**

---

---

# ***IMPORTANT***

## **KEEP THIS OWNER'S MANUAL IN THE VEHICLE**

### **WARNING**

**Improper operation and maintenance of this liftgate could result in severe personal injury or death.**

**Read and understand the contents of this manual and all warning and operation decals before operating and/or performing maintenance on this liftgate.**

**For SAFETY information on this liftgate see  
Chapter 1 of this manual**