
Domino's Pizza

GT Side Loader Tech Manual



Waltco Lift Corp.
Corporate Office United States
285 Northeast Ave.
Tallmadge, OH 44278
P: 330.633.9191
F: 330.633.1418

Waltco Lift Corp.
United States
620 S Hambledon Ave.
City of Industry, CA 91744
P: 626.964.0990
F: 626.964.0149

Waltco Lift Inc.
Canada
90 North Queen St.
Etobicoke, ON M8Z 2C5
P: 888.343.4550

Table of Contents



Improper operation and maintenance of this liftgate could result in severe personal injury or death.

Read and understand the contents of the owner's manual and all warning and operation decals before operating and/or performing maintenance on this liftgate.

INTRODUCTION	3
LIFTGATE TERMINOLOGY.....	4-5
KEY COMPONENTS	6-8
SIDE LOADER GRAVITY DOWN SINGLE PUMP	9
SIDE LOADER HYDRAULIC SCHEMATIC	10
SIDE LOADER ELECTRICAL SCHEMATIC	11
TROUBLESHOOTING GUIDE	12-16
ONE PIECE GALVANIZED PLATFORM PM	17
MOUNT FRAME PM	18
TRACK FRAME PM	19
HYDRAULIC LAYOUT PM	20
HYDRAULIC AND ELECTRICAL COMPONENTS	21
ELECTRICAL COMPONENTS	22
HOW TO ORDER PARTS.....	23

Introduction

Each Waltco liftgate is manufactured to stringent quality standards for years of reliable service. To ensure maximum performance of your Waltco liftgate, always specify and use “OEM Parts” from Waltco.

Service and repair should only be performed by an authorized Waltco distributor. For information on the nearest authorized Waltco distributor contact:

Waltco Lift Corp.

285 Northeast Avenue

Tallmadge, OH 44278

Phone: 800.411.5685

Fax: 800.411.5684

E-mail: parts@waltco.com



This is the safety alert symbol. This manual uses this symbol to alert you to potential personal injury hazards. Obey all safety messages that follow this symbol to avoid personal injury or death.



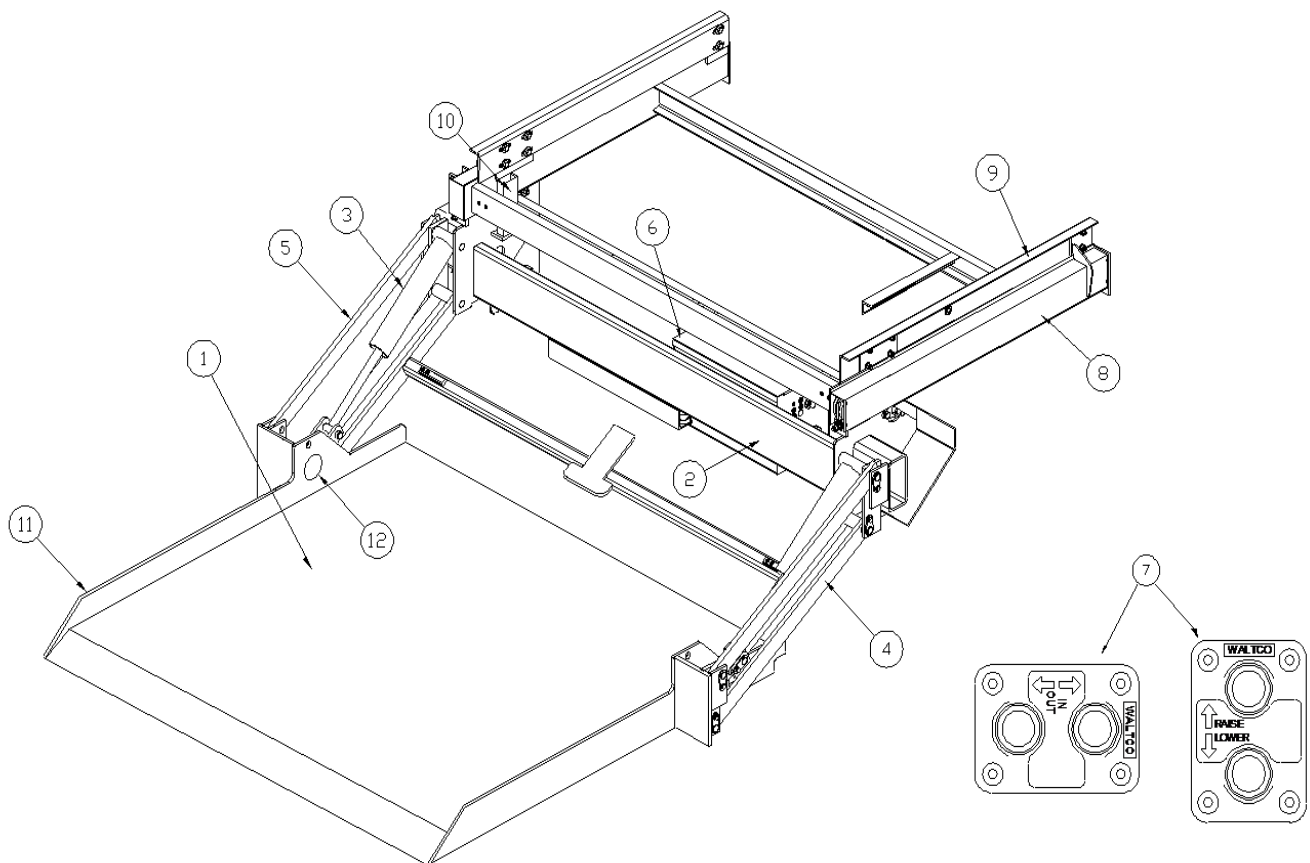
The use of non-standard or makeshift parts can be extremely hazardous and result in serious injury or death.



Every vehicle that has a WALTCO Liftgate must have legible WARNING AND OPERATION DECALS clearly posted on the vehicle and an OWNER'S MANUAL in the vehicle at all times as a guide for proper operation and maintenance.

Liftgate Terminology

1. Deck
2. Mount Tube
3. Lift Cylinder
4. Lift Arm
5. Parallel Arm
6. Pump Box
7. In/Out, Raise/Lower Switches
8. Slide Tube
9. Mount Angles
10. Up Stops
11. Transit Latch Bail
12. Platform Light



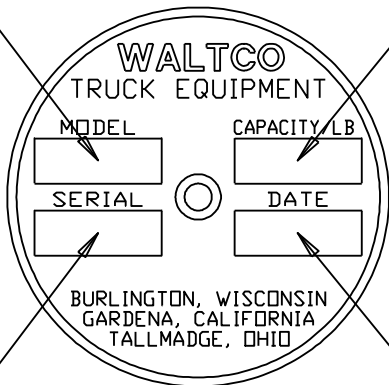
Liftgate Terminology

EXPLANATION OF SPECIFICATION TAG		
MODEL NO.	DESCRIPTION	CAPACITY
GT33	GT-33 SLIDER LIFTGATE	3300 LBS.
GT44	GT-44 SLIDER LIFTGATE	4400 LBS.

MODEL NUMBER

RATED CAPACITY

Based on an evenly distributed load on the platform flat surface



SERIAL NUMBER

of Liftgate. To be used when ordering parts or when contacting Waltco for service or warranty.

DATE OF MANUFACTURE
MONTH/YEAR

GR02685

Rear Gate
SPECIFICATION
TAG



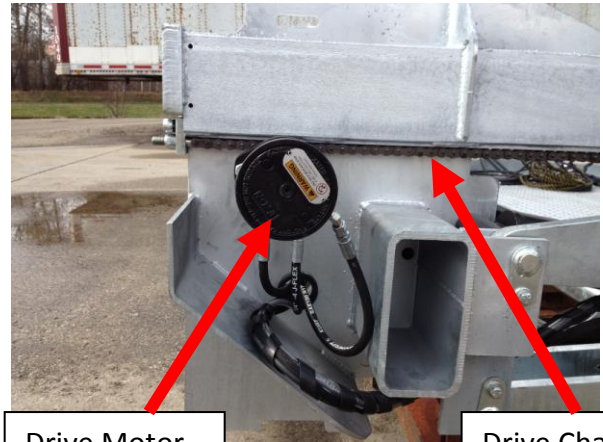
Side Gate
SPECIFICATION
TAG



Key Components



Cylinder Lock Valve & Coil Assembly



Drive Motor

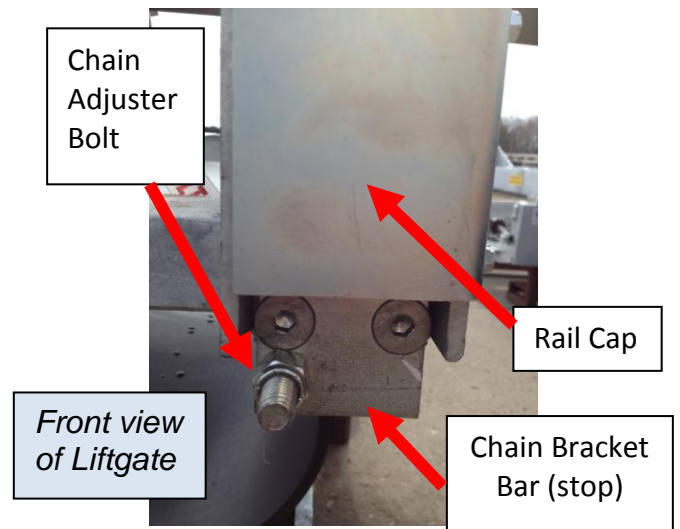
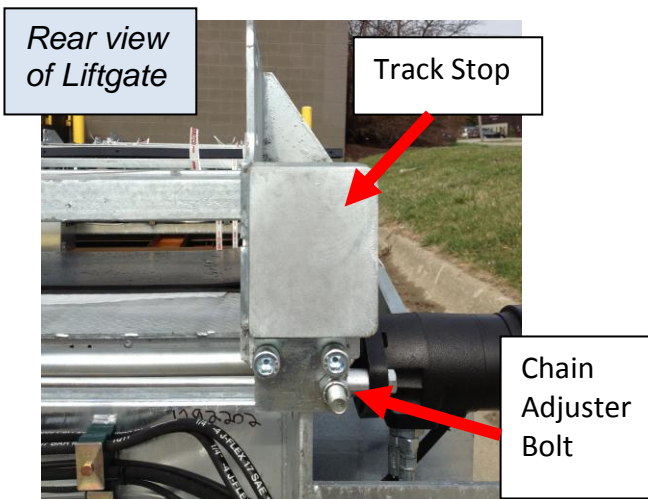
Drive Chain



Platform Work Light



Flasher Lights



Key Components

Phillips Permalogic Charging System-Nose Box



Dual Pole Socket



Contact Phillips Industries direct for troubleshooting the Permalogic System.
800.423.4512 or www.phillipsind.com

Platform Indicator lights



Upper set of lights represent the Rear Gate

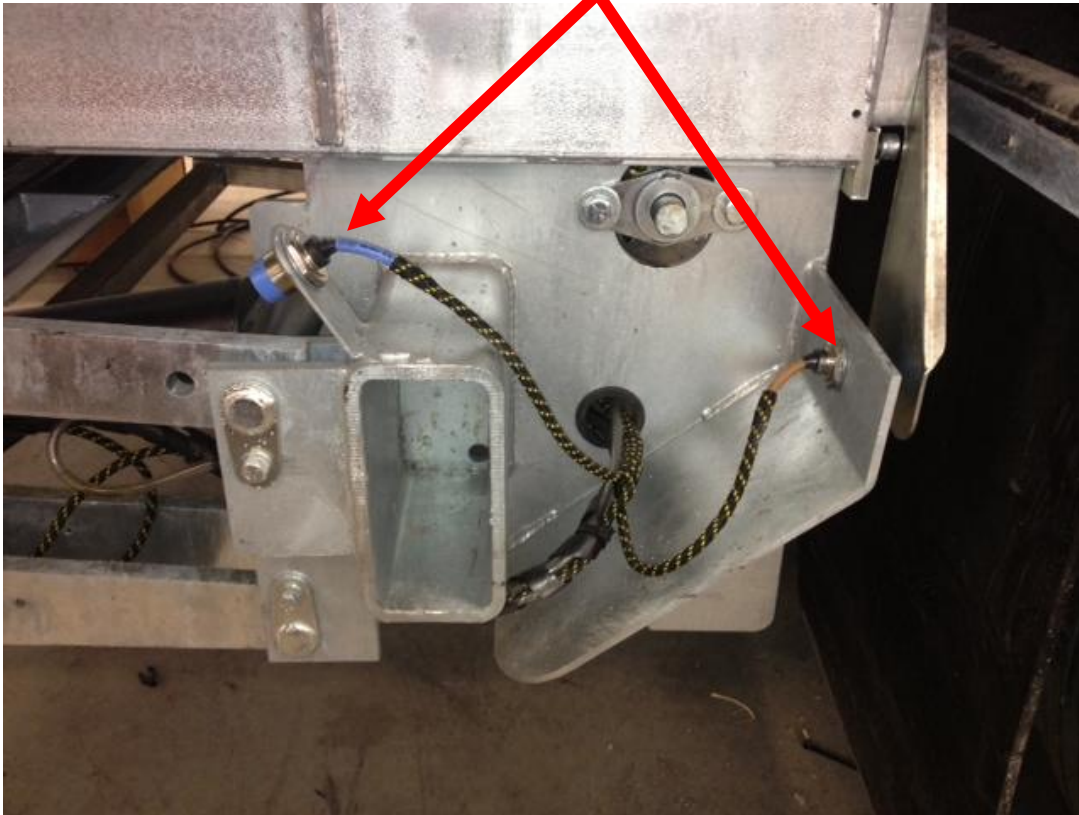
Green light- Platform is stored

Red light- Platform is not stored

Lower set of lights represent the Side Gate

Key Components

Proximity Switch



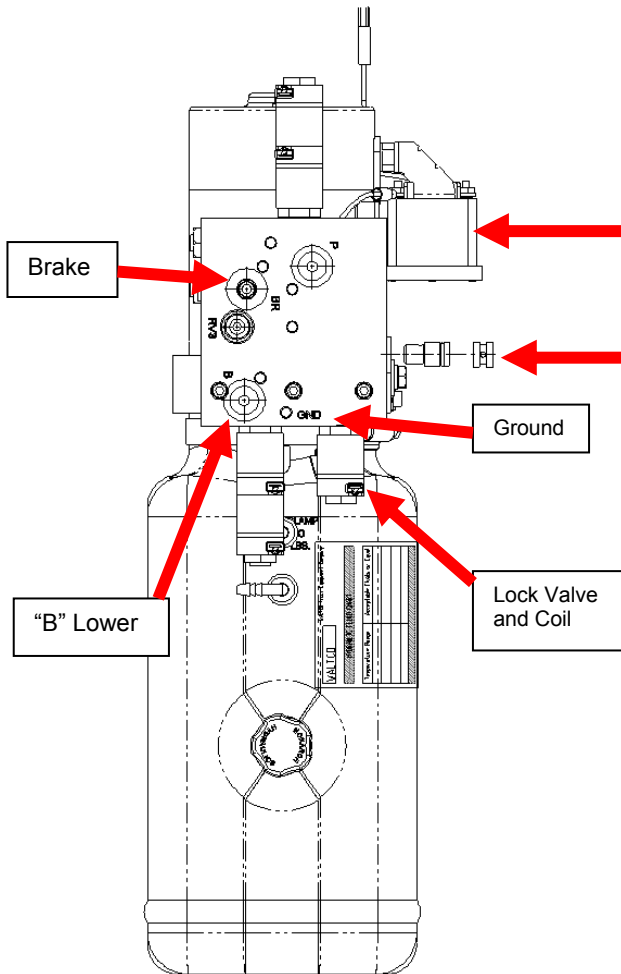
Platform Door Light

Green light indicates
platform is at floor level

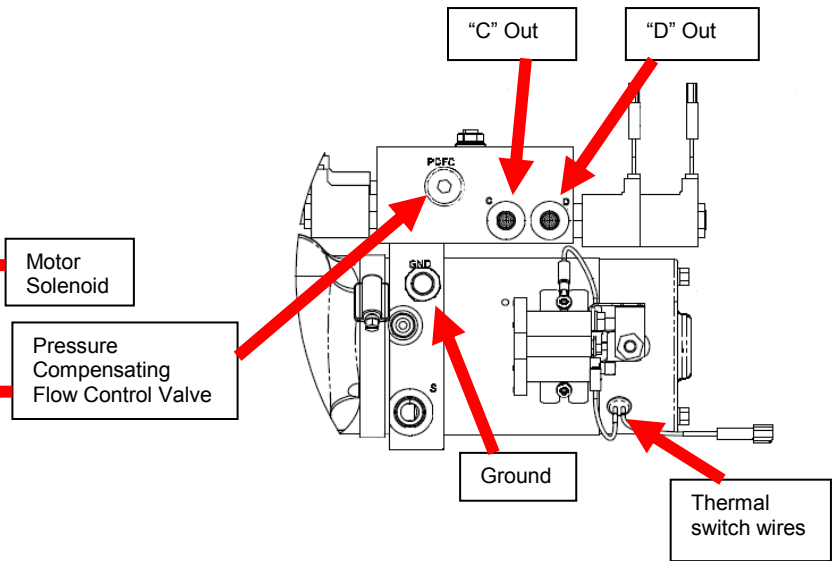


Side Loader Gravity Down Single Pump

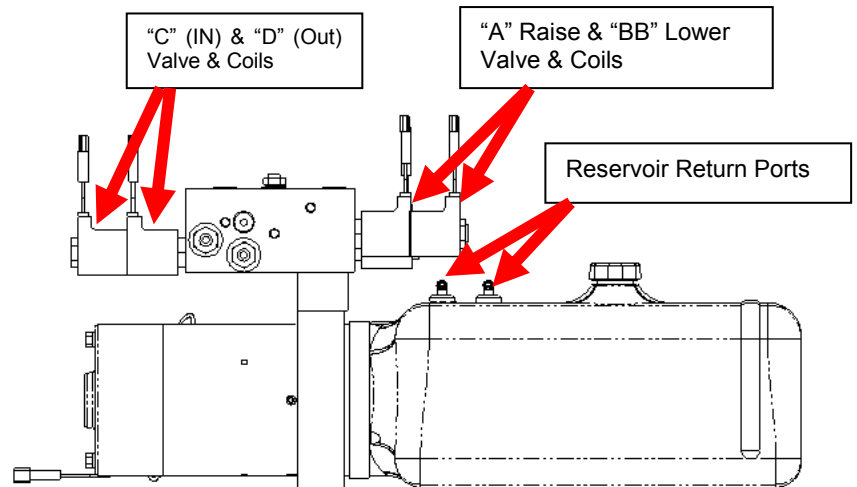
Top View of Valve Body



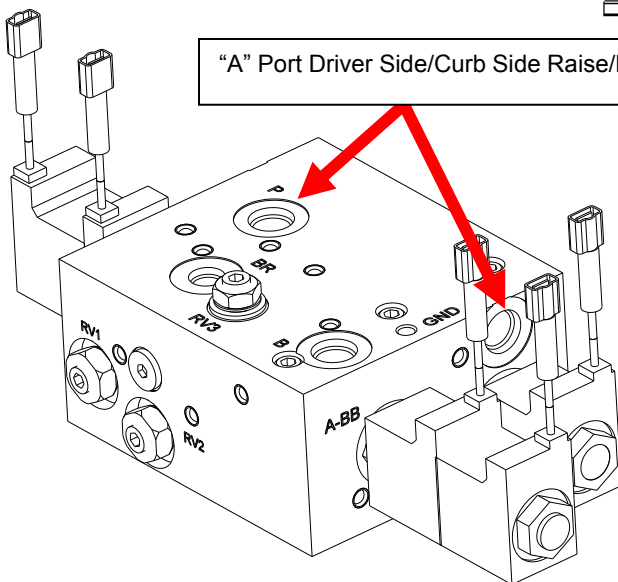
Back side of Valve Body



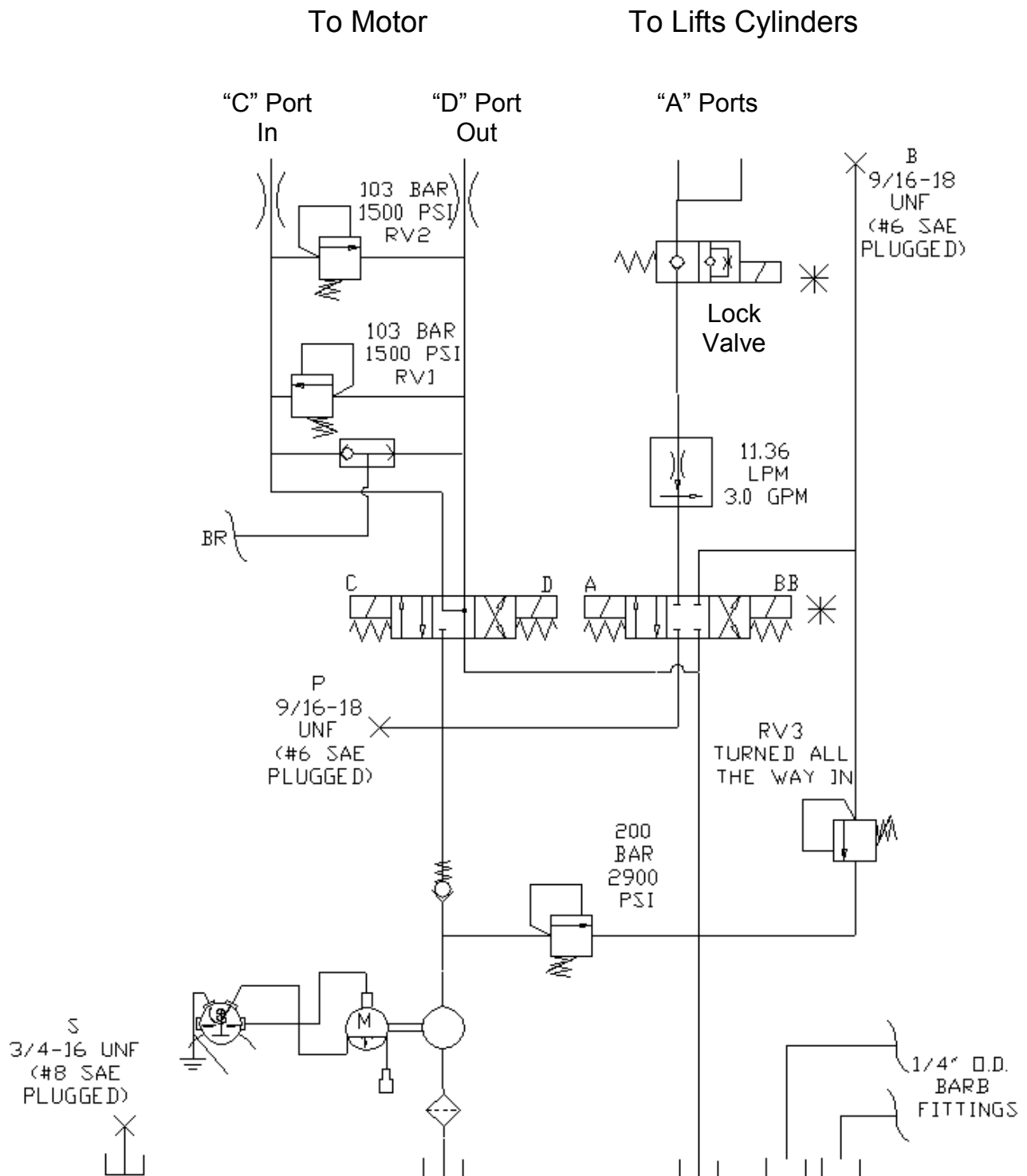
Front View of Valve Body



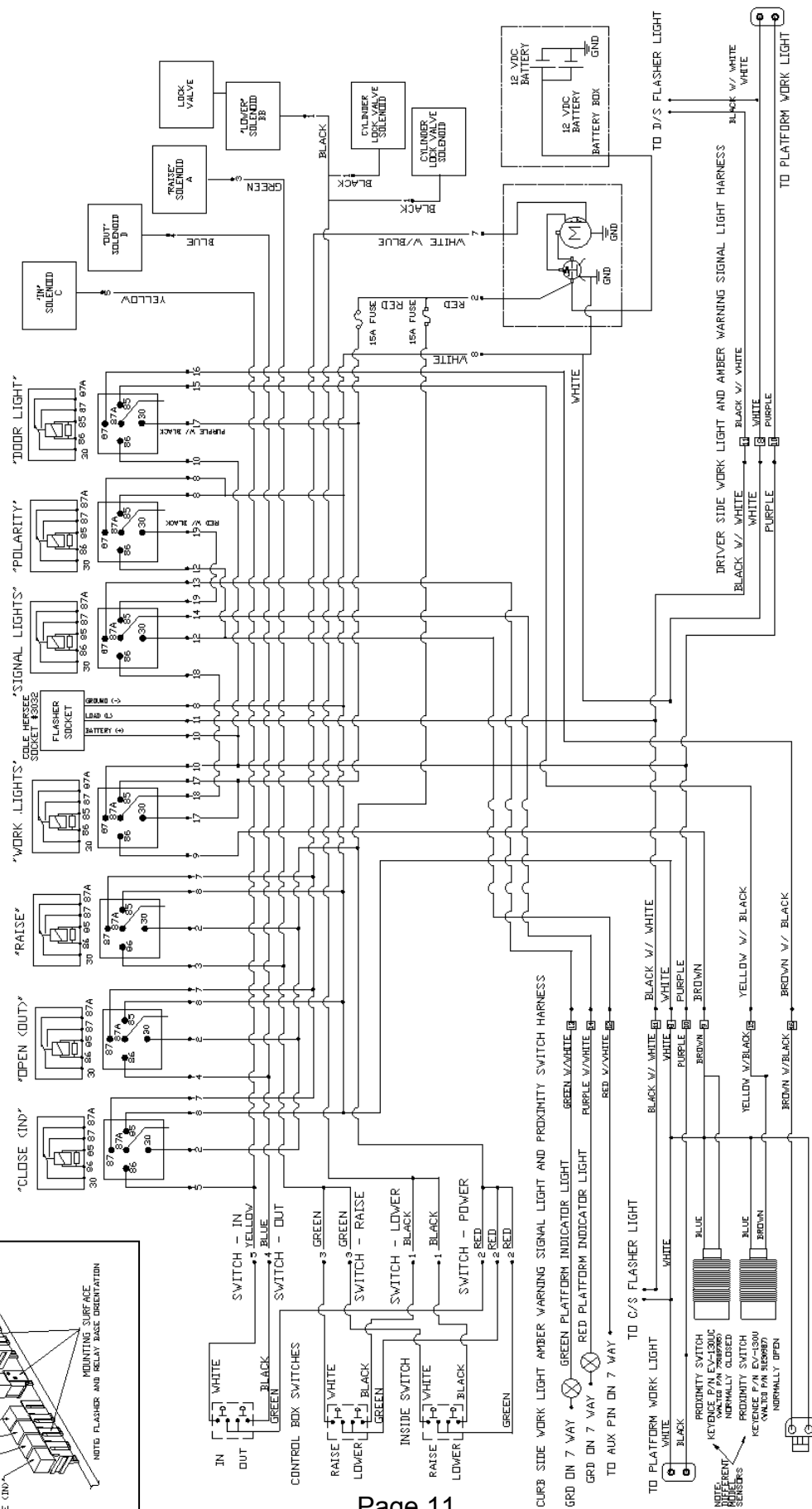
"A" Port Driver Side/Curb Side Raise/Lower



Side Loader Hydraulic Schematic



A perspective diagram of a relay assembly. The assembly consists of two rows of relays mounted on a base. The top row is labeled '3 RELAYS' and the bottom row is labeled '4 RELAYS'. Labels with leader lines point to various components: 'FLASHER' points to the top row; 'WORK LIGHTS' points to the top row; 'OPEN LIGHTS' points to the top row; 'POLARITY' points to the top row; 'SIGNAL LIGHTS' points to the top row; 'OPEN GUTTY' points to the bottom row; 'CLOSE (IN)' points to the bottom row; 'MOUNTING SURFACE' points to the base; and 'NOTO FLASHER AND RELAY BASE ORIENTATION' points to the base.



Domino's GT Side Loader Trouble Shooting Guide

CHECKING THE OIL LEVEL IN THE RESERVOIR

The liftgate is shipped with Shell Tellus 15. Check the owner's manual for additional recommended oils. Fill as required with the specified fluid in the owner's manual. Do not overfill the reservoir. **Domino's spec power unit 90908954:** Lower the platform to the ground. Oil should be within ½ to the fill line (over or above) marked on the side of the oil tank. Fill as required with the specified fluid in the owner's manual.

RECOMMENDED LIFTGATE BATTERY(S)

Domino's preferred liftgate battery(s) as supplied at during the installation are AGM batteries. The **battery specification is Group 31, 650-750 cold cranking amps and at least 180 minutes of reserve capacity.** Batteries should be load tested before being replaced. When replacing the liftgate battery(s) inspect the cables and wires for corrosion. If the batteries are in need of replacement the charging system should be tested before releasing the trailer.

MOTOR DOES NOT RUN

The pump motor has built in thermal protection. The thermal switch will shut the motor down if the unit exceeds 240 degrees. Once the motor cools down the switch will reset automatically.

- Check the cab shut off switch confirm that the switch is “ON” and functional. Check for voltage on both terminals of the cab switch. This voltage should be the same as the battery voltage. If you do not find battery voltage check all of the cables and wires for damage and poor connections. Clean any dirty connections and tighten any loose connections.
- Check the Circuit breaker; this is located directly on the liftgate battery(s). Check for voltage on both sides of the circuit breaker. This should also reflect battery voltage.
- Inspect the 15 amp switch fuse located in the switch wiring harness.
- Check the battery(s) for a full state of charge. Load test the lift gate battery(s). Replace any batteries that cannot be fully charged.
- Check all cables and wires for shorts and poor connections; this includes grounds and the gauge of the wire for ground. Check the cables for damages clean any dirty connections and tighten any loose connections.
- Check for voltage at the motor solenoid. Listen for a clicking noise at the motor solenoid when the raise switch is activated. If you have at least **10.5 volts** at the solenoid when the raise switch is activated and you have no voltage to the motor, and then replace the motor solenoid. If the motor does not run after confirming battery voltage at the terminal on the motor, replace the defective motor.
- If you have no power to the motor solenoid with the switch activated you could have a problem with the relays. A relay is used for each function “UP”, “IN” and “OUT” to power the motor solenoid. The switch is not directly wired to the motor solenoid. Post **87** on each relay provides power to motor solenoid. When control switch is pressed for “UP”, “IN” or “OUT”, you should get voltage at the motor solenoid. If you are not getting voltage, then you should check the relays and wiring back to the switch that powers the relays.

Domino's GT Side Loader

Trouble Shooting Guide

PLATFORM DOES NOT RAISE OR RAISES SLOW- MOTOR RUNS

If the motor is not running see the section titled "MOTOR DOES NOT RUN" before proceeding.

- Check for any mechanical obstructions or any mechanical damage. Look for any broken, bent or worn parts that could interfere with normal operation.
- Check and inspect the oil level in the reservoir. Inspect for any contamination or water in fluid. Check the fluid viscosity. **See Checking the oil level in the reservoir**
- Check the **Coil Valve (A)**. Check and confirm voltage to coil when the "Raise" switch is activated. Check for **10.5 volts** at the coil. Test the coil for resistance (**4.5ohms**). Confirm that the valve is magnetizing. If the coil is working the valve may need to be replaced. If the valve is not getting voltage, check all cables and wires for shorts and poor connections. Check and test the control switch.
- If your voltage is under **10.5 volts** with the "Raise" switch activated, check the battery(s) for a full state of charge. Load test the lift gate battery(s). Replace any batteries that cannot be fully charged.
- Check pumps pressure from the lift port (**A**). It should be **2900 psi**.

PLATFORM DOES NOT SLIDE OUT

If the motor is not running see the section titled "MOTOR DOES NOT RUN" before proceeding.

- Check for any mechanical obstructions or any mechanical damage. Look for any broken, bent or worn parts that could interfere with normal operation. Inspect the railing rollers and track system of the liftgate. Check for any obstructions in the path of travel. Lubricate all pins and bushings.
- Check the **Coil Valve (D)**. Check and confirm voltage to coil when the "Out" switch is activated. Check for **10.5 volts** at the coil. Test the coil for resistance (**4.5ohms**). Confirm that the valve is magnetizing. If the coil is working the valve may need to be replaced. If the valve is not getting voltage, check all cables and wires for shorts and poor connections.
- Check and inspect the hydraulic drive motor. Inspect the timing on the tracking system by taking the gate in and making sure that gate touches the stops on both sides evenly. Check to see if the axle gears are engaging evenly on both sides of the chains. Inspect the drive motor for engagement. Then check the line out pressure (**D**) it should be about **1500 psi**.

PLATFORM DOES NOT SLIDE IN - MOTOR RUNS

If the motor is not running see the section titled "MOTOR DOES NOT RUN" before proceeding.

- Check for any mechanical obstructions or any mechanical damage. Look for any broken, bent or worn parts that could interfere with normal operation. Inspect the railing rollers and track system of the liftgate. Check for any obstructions in the path of travel. Lubricate all pins and bushings.
- Check the **Coil Valve (C)**. Check for **10.5 volts** at the coil when the "In" switch is activated. Test the coil for resistance (**4.5ohms**). Confirm that the valve is magnetizing. If the coil is working the valve may need to be replaced. If the valve is not getting voltage, check all cables and wires for shorts and poor connections.
- Check and inspect the hydraulic drive motor. Inspect the drive motor for engagement. Then check the line out pressure (**C**) it should be about **1500 psi**.

Domino's GT Side Loader Trouble Shooting Guide

PLATFORM WILL NOT LIFT TO FULL CAPACITY

- Check the serial tag on the liftgate and verify the load lifting capacity. Confirm that the platform is not over loaded. Confirm that the load is centered correctly on the platform.
- Check and inspect the oil level in the reservoir. Inspect for any contamination or water in fluid. Check the fluid viscosity. **See checking the oil level in the reservoir.**
- Check the battery(s) for a full state of charge. Load test the lift gate battery(s). Replace any batteries that cannot be fully charged
- Check for any mechanical obstructions or any mechanical damage. Look for any broken, bent or worn parts that could interfere with normal operation.
- Check for leaking hoses and lines. Replace any leaking lines or hoses.
- Check for air in the hydraulic system; bleed any air from the lift gate at the cylinder.
- Check the voltage at the pump motor with the “**Raise**” switch activated. The voltage should be **10.5 volts**.
- Check the pump pressure from the lift port. It should be **2900 psi**.

PLATFORM DOES NOT LOWER OR LOWERS SLOW

- Check for any mechanical obstructions or any mechanical damage. Look for any broken, bent or worn parts that could interfere with normal operation.
- Check and inspect the oil level in the reservoir. Inspect for any contamination or water in fluid. Check the fluid viscosity. **See Checking the oil level in the reservoir.**
- Check voltage on the **Lowering Valve (BB)** while the “**Lower**” switch is being activated. The voltage should be at least **10.5 volts**. Feel for a pulse on the valve. Test the coil (**4.5ohms**). Confirm that the valve is magnetizing. If the coil is good the valve may need to be replaced. If the coils are not getting power, check all cables and wires for shorts and poor connections.
- Check voltage on the **Lock Valves** while the “**Lower**” switch is being activated. The voltage should be at least **10.5 volts**. Feel for a pulse on the valve. Test the coil (**4.5ohms**). Confirm that the valve is magnetizing. If the coil is good the valve may need to be replaced. If the coils are not getting voltage, check all cables and wires for shorts and poor connections.

THE CIRCUIT BREAKER TRIPS

- Check for a direct short in power cable. Inspect for damaged or cut cable. Also check for improperly size battery cable.
- A defective motor may draw too much current. Check amperage draw from lift gate motor. At **700 psi** the motor should draw **80-100 amps**.
- Defective circuit breaker. If the breaker is suspected it should be replaced.

CONTROL SWITCH FUSE BLOWN

- Check the wiring for damages, clean dirty connections and tighten any loose connections
- Check and inspect for a short in switch control wire or switch contacts
- Check for defective coils on valves Test the coils (**4.5ohms**)

Domino's GT Side Loader Trouble Shooting Guide

PLATFORM WILL ONLY LOWER ON ONE SIDE.

- Check for any mechanical obstructions or any mechanical damage. Look for any broken or bent parts that could interfere with normal operation.
- Test for voltage on lock valve. Check for **10.5 volts** at the coil when the “**lower**” switch is pressed. Check for defective coils on valves. Test the coil for resistance (**4.5ohms**). Confirm that the valve is magnetizing. If the coil is working the valve may need to be replaced. If the valve is not getting voltage, check all cables and wires for shorts and poor connections

PUMP MOTOR IS GETTING HOT

- The Thermal sensor is set to activate at **240 F** degrees .This condition may be normal if the liftgate motor experiences high cycles of operation in a short period of time without cooling. The Thermal switch will reset after the motor cools down.
- Check for low voltage. The voltage should be at least **10.5 volts** at the motor.
- Check batteries are fully charged, load test batteries. Check the cables for damages, clean dirty connections and tighten any loose connections.
- Check and confirm that the ground is adequate.

INDICATOR LIGHTS AT THE FRONT OF THE TRAILER ARE NOT WORKING.

- The liftgate has been equipped with two indicator lights that will allow the driver to see if the gate is stored or deployed. The “**GREEN**” indicator means that the gate is stored. The “**RED**” indicator means that the platform is deployed. In order for the indicators to illuminate, the 7 way connector will need to be plugged in.
- If the “**GREEN**” or “**RED**” indicator lights are not getting voltage, check all cables and wires for shorts and poor connections. Check and test the “**Signal Lights Relay**” check for voltage on 87a for the “**RED**” indicator when the platform is deployed and 87 for the “**GREEN**” when the platform is stored.
- Check and inspect the proximity switch, confirm that it is functional
- Check all of the cables and wires for damage and poor connections. Clean any dirty connections and tighten any loose connections.

PLATFORM WARNING LIGHTS ARE NOT WORKING

- Check lights test the lamps to confirm that the lamp does not have a broken filament.
- Check the “**Work Lights Relay**” and confirm that the relay is operating properly.
- Check and inspect the proximity switch, confirm that it is functional
- Check all of the cables and wires for damage and poor connections. Clean any dirty connections and tighten any loose connections.

Domino's GT Side Loader Trouble Shooting Guide

AMBER WARNING SIGNAL LIGHTS ON PLATFORM ARE NOT WORKING

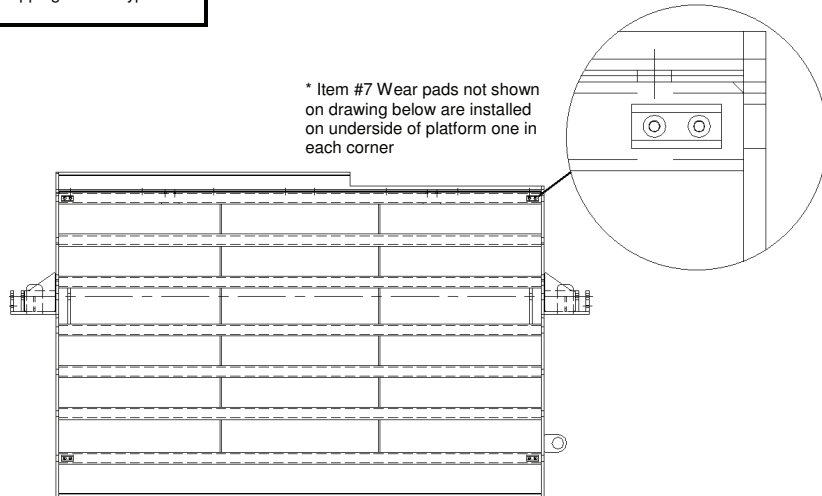
- Check lights test the lamps to confirm that the lamp does not have a broken filament.
- Check the “**Signal Lights Relay**” and confirm that the relay is operating properly.
- Check and inspect the proximity switch, confirm that it is functional
- Check all of the cables and wires for damage and poor connections. Clean any dirty connections and tighten any loose connections.

DOOR LIGHT INSIDE TRAILER TO INDICATE PLATFORM IS AT FLOOR LEVEL IS NOT WORKING.

- Check lights test the lamps to confirm that the lamp does not have a broken filament.
- Check the “**Door Lights Relay**” and confirm that the relay is operating properly.
- Check and inspect the proximity switch, confirm that it is functional
- Check all of the cables and wires for damage and poor connections. Clean any dirty connections and tighten any loose connections.

ITEM	PART NUMBER	QTY	DESCRIPTION
	91265104	1	Platform Assembly Complete, 49x80+5.5 1pc stl galv, wrk lts, rgs, yellow ramp (Includes all items listed below)
1	91265014	1	Finished Platform, 49-80+5.5 1pc, Galv 4 wear pads installed
2	23370800	2	Upper Pin Assy, 1.00x2.75 p
3	75088255	4	Washer 3/8 Stainless Steel
	75088081	4	Lock Washer 3/8 Plated
4	75086055	4	Hex Bolt, 3/8-16x3/4 GR5
5	27371002	2	Lower Pin Assy, 1.00x7.0,p
6	91129785	2	Work Light,13-LED,2.5Dia, White
	91129786	2	Grommet,Light,2.5Dia, Black
7	*34427307	4	Bearing
	*75086854	8	1/4-20x5/8 Self Tapping Screw Type F Plated

* Item #7 Wear pads not shown
on drawing below are installed
on underside of platform one in
each corner

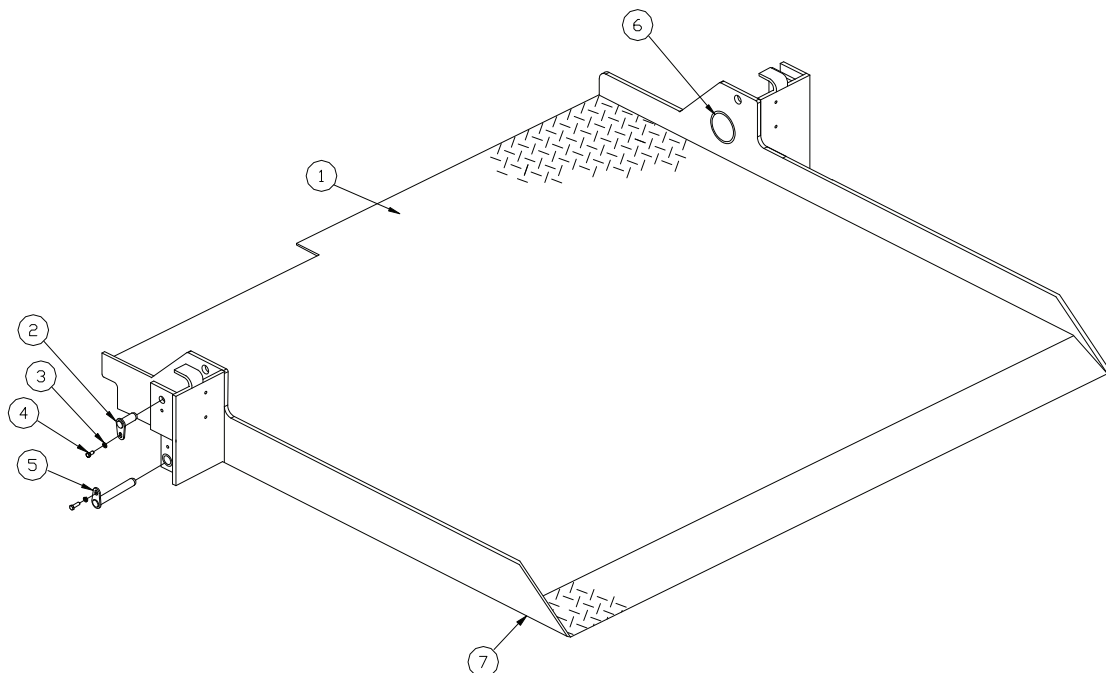


WALTCO LIFT CORP.
DOMINO'S GTSL SERIES

REVISED:
E.O.
REV.

PM

ONE PIECE GALVANIZED PLATFORM



WALTCO LIFT CORP.
DOMINO'S GTSL SERIES

REVISED:
E.O.
REV.

PM

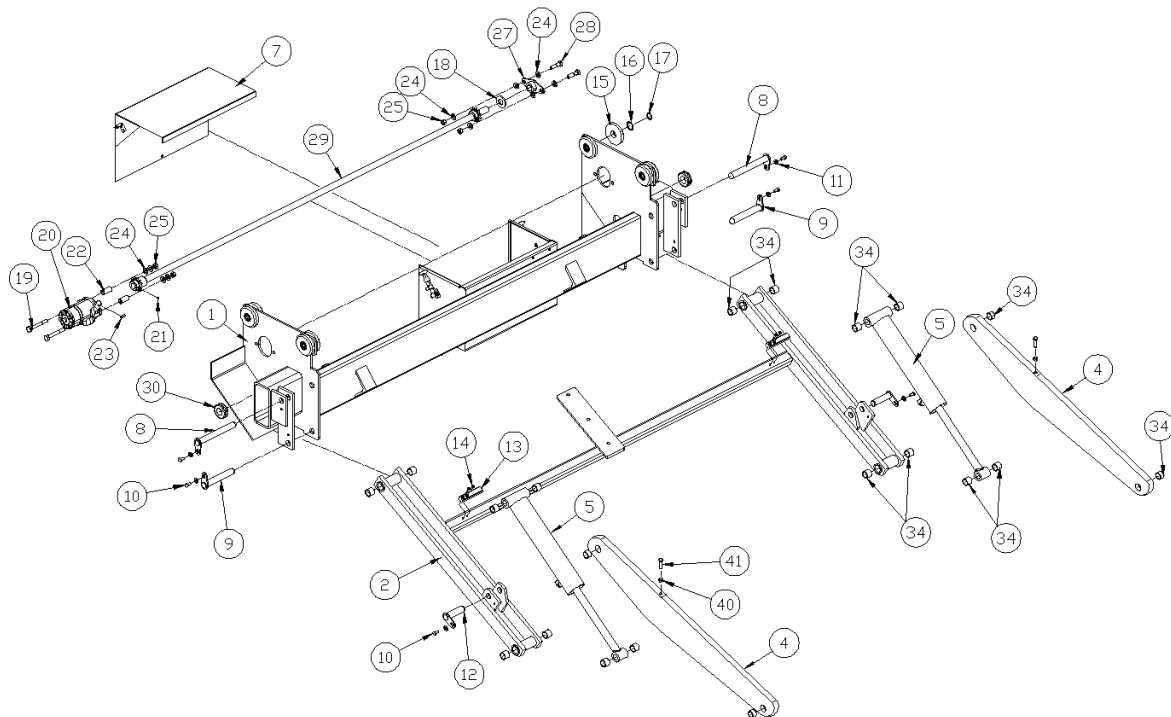
ITEM	PART NUMBER	QTY	DESCRIPTION
1	91265209	1	Mount frame Wheel Axle Weld 1.25" Dia. Axles, Galvanized
2	91265300	1	Lift arm, 65.25" Track, W/Warning Lts MTG Galvanized
4	91265500	2	Parallel Arm Complete, Galvanized
5	27580020	2	Lift cylinder for GT-33
7	10291503	1	Pump Enclosure Cover Assy, Riveted Galvanized Steel Sheet
8	27595100	2	Pin, 1" dia x 8-15/16" lg.
9	27371002	2	Pin, 1" dia x 7" lg.
10	75086055	6	Hex screw, 3/8-16 x 3/4", GR 5.
11	75088081	6	Lock washer, 3/8"
	75088053	6	Washer, 3/8x1x0.078"THK Flat
12	23370300	2	Pin, 1" dia x 3-15/16" lg.
13	39035700	2	Plastic wear plate
14	75086854	4	Screw, 1/4-20 x 5/8"
15	91230535	8	Wheel, with bearing, 1.25" Dia. Axle
16	91230073	8	Thrust Washer Washer
17	91230013	8	Retaining ring
18	75081223	1	Bronze washer
19	75086234	2	Hex bolt, 1/2-20 x 4-1/2"
20	90802990	1	Hydraulic motor
21	75086740	1	Set screw, 1/4-28 x 1/4"
22	27569100	2	Spacer tube
23	75090179	1	Key, drive axle
24	75088056	8	Washer, 1/2"
25	75085196	4	Lock nut, 1/2-20
27	91019652	1	Drive axle bearing housing w/bearing
28	75086190	2	Hex bolt, 1/2-20 x 2"
29	91019650	1	Drive axle, Zinc Plated
30	75050004	2	Grommet
34	85803391	20	Bearing
40	75085111	2	5/8-18 Lock Nut
41	90908752	2	5/8-18 x 2" Gr 8 Bolt

WALTCO LIFT CORP.
DOMINO'S GTSL SERIES

REVISED:
E.O.
REV.

PM

MOUNT FRAME



WALTCO LIFT CORP.
DOMINO'S GTSL SERIES

REVISED:
E.O.
REV.

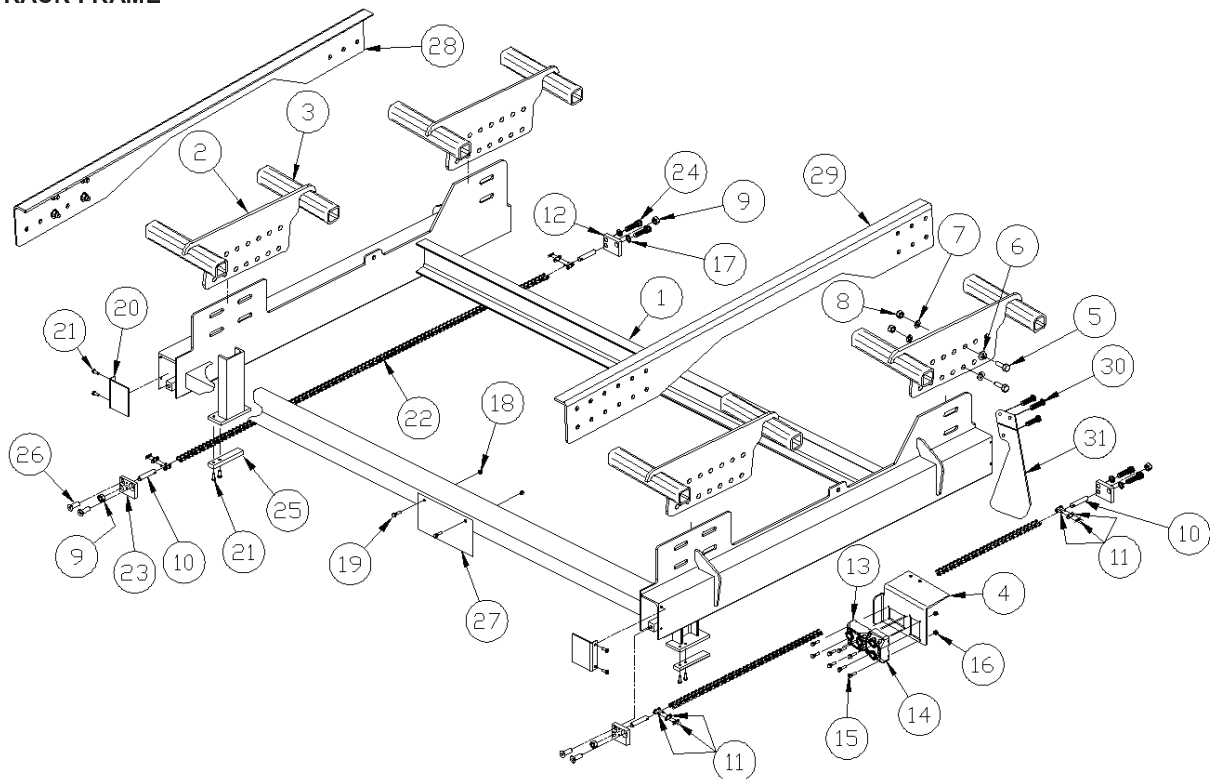
ITEM	PART NUMBER	QTY	DESCRIPTION
1	90908611	1	Track assembly
2	90908295	4	Mounting Plate (side mount only)
3	90802823	8	Mounting Plate Support Tube (side mount only)
4	90802650	1	Switch Mounting Bracket
5	75086201	12	Hex bolt, 9/16-13 x 1.5, GR 8.
6	75088065	12	Washer, 9/16"
7	75088084	12	Lock washer, 9/16"
8	75085115	12	Nut, 9/16"-18 Gr. 8
9	75085162	4	Lock nut, 1/2"-13
10	27569110	4	Chain tensioner
11	75081117	4	Connecting link
12	27569141	2	Chain Bracket Bar
13	90802928	1	Switch, In / Out
14	10099323	1	Switch, Raise / Lower, 15'
15	75086732	8	#10-32 x 1" Rnd Hd Screw
16	75085000	8	#10-32 x 1 Nut
17	75088260	2	1/2" Lock Washer
18	75085001	2	Nut, 1/4-20"
19	75086212	1	Hex bolt, 1/4-20 x 1.25"
20	27569130	2	Rail Cap
21	75086861	4	Screw, #10-32 x 5/8"
22	27569120	2	Chain
23	27569140	2	Chain Bracket Bar
24	75087580	4	1/2-13 x 1-1/4" Lg. S.H.C.S
25	39035700	2	Upstop
26	75086235	2	1/2-13 x 1-1/4" Lg. Flat Head S.H.C.S
27	27564070	1	Decal Mount Plate
28	90908672	1	D.S. Mount Angle (rear mount only)
29	90908673	1	D.S. Mount Angle (rear mount only)
30	91129460	1	Flag Weldment, Zinc Plated
31	75086874	6	Screw, 1/4-20x58" LG Hex Head Type F

WALTCO LIFT CORP.
DOMINO'S GTSL SERIES

REVISED:
E.O.
REV.

PM

TRACK FRAME



WALTCO LIFT CORP.
DOMINO'S GTSL SERIES

REVISED:
E.O.
REV.

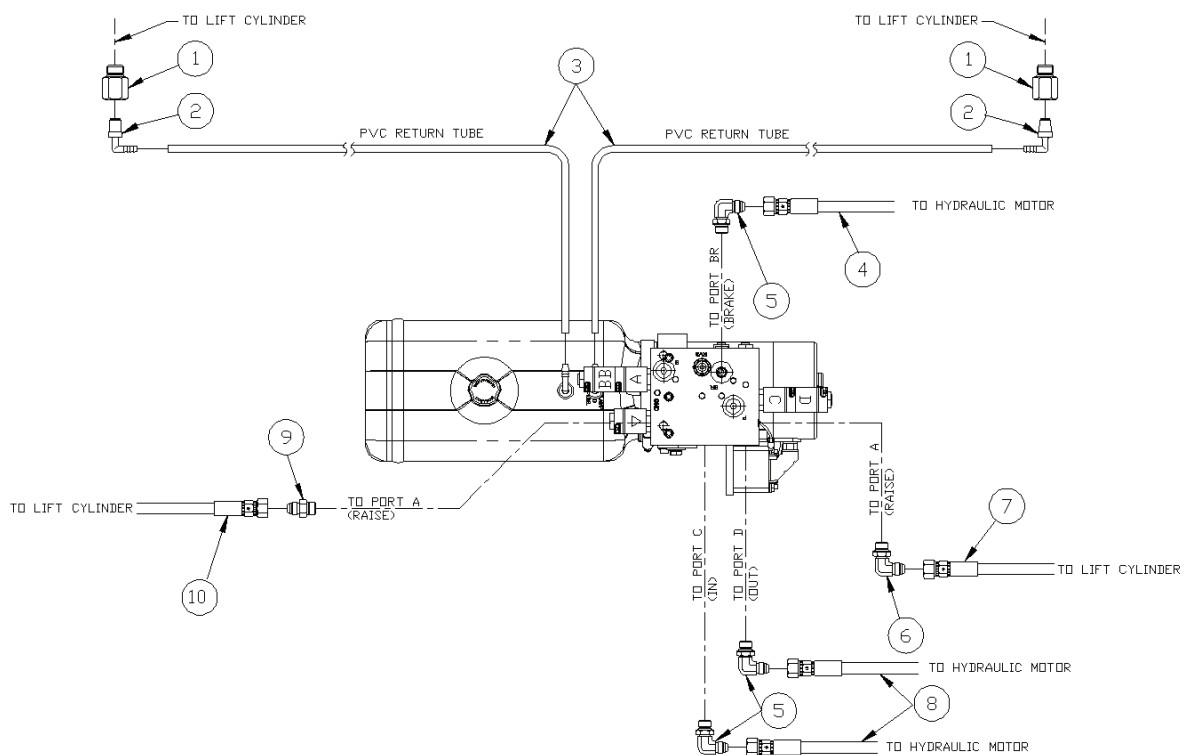
ITEM	PART NUMBER	QTY	DESCRIPTION
1	7500092-1	2	Adapter, 9/16-18 SAE ORB Male x 1/4 NPTF, P# 6-1/4 F50G-S
2	75082745	2	Barbed Fitting, 1/4NPTFM x 1/4
3	82021059	13 ft.	Tube, Flexible PVC, 1/4 ID Sold Per Foot
4	90908853	1	Hose, 100R17, 1/4x84, 1/4 JIC FEX x 1/4 JIC FEX
5	90908845	3	90 Elbow, #4 SAE M ORS ADJ. #4 JIC M
6	75082869	1	90 Elbow, 9/16-18 37 Male x 9/16-18 "O" Ring
7	90802833	1	Hose, 100R17, 1/4x96, 3/8 JIC FEX x 3/8 JIC FEX
8	90802840	1	Hose, 100R17, 1/4 x 85.75 1/4 JIOC FEX x 3/8 JIC FEX
9	75082882	1	Adapter, #6 SAE ORB x #6 JIC
10	75084041	1	Hose, 100R17, 1/4 x 66.75, 3/8 JIC FEX x 3/8 JIC FEX

WALTCO LIFT CORP.
DOMINO'S SERIES

REVISED:
E.O.
REV.

PM

HYDRAULIC LAYOUT



WALTCO LIFT CORP.
DOMINO'S SERIES

REVISED:
E.O.
REV.

PM

ITEM	PART NUMBER	QTY	DESCRIPTION
1	90802833	2	Hydraulic hose, 1/4" x 96
2	90802840	2	Hydraulic hose, 1/4" x 85-3/4"
3	75083319	2	Hydraulic Fitting
4	75082882	2	Hydraulic Fitting
5	75082869	2	90 degree Hydraulic Fitting
6	90908954	1	Power Unit, Single Gravity Down, 2900 Psi. In-Out W/Shuttle Valve Reservoir Plastic Horiz. 5.5x6.5x13.5"
7	7043001-1	1	Motor, 12v, Standard Duty, Internal Thermal Switch
8	7500093-1	1	45 degree Hydraulic Fitting
9	75083044	5	Hose Clamp 1/2"
	75083045	1	Hose Clamp 5/8"
10	75086036	1	Hex head bolt 5/16-18 x 1" Lg.
11	75085003	9	Hex nut, 5/16-18
12	90908853	1	Hydraulic Hose, 1/4" x 84"
13	75084041	2	Hydraulic hose 1/4" x 66-3/4" Lg
14	27581035	2	Lock Valve Assy. Complete
15	90522782	2	Hydraulic Fitting
16	75083314	6	Hex bolt, 5/16-18 x 1-3/8"
17	75083313	6	Cover plate
18	75083315	8	Twin Clamp
19	75083312	3	Parklamp weld plate
20	75082028	7 ft	Spiral Loom
21	99753005	1	Power Cable 18' 0 GA. Red
22	99753002	1	Ground Cable 18' 0 GA.
23	75086084	2	Stacking Bolt, 5/16-18 x 25/32"
24	10099323	1	Up/Down Switch Assy
25	90802928	1	In/Out Switch Assy
26	90802650	1	Switch Bracket
27	90802957	1	Aux Switch Harness
28	70401213	1	Cartridge (Valve Only), Normally Closed
29	70402303	5	Coil, High Watt, 10v, 25 Watt
30	90908981	1	Cartridge, 4 Way, 3 Pos. Closed Center
31	90908980	1	Cartridge, 4 Way, 3 Pos. Open Center

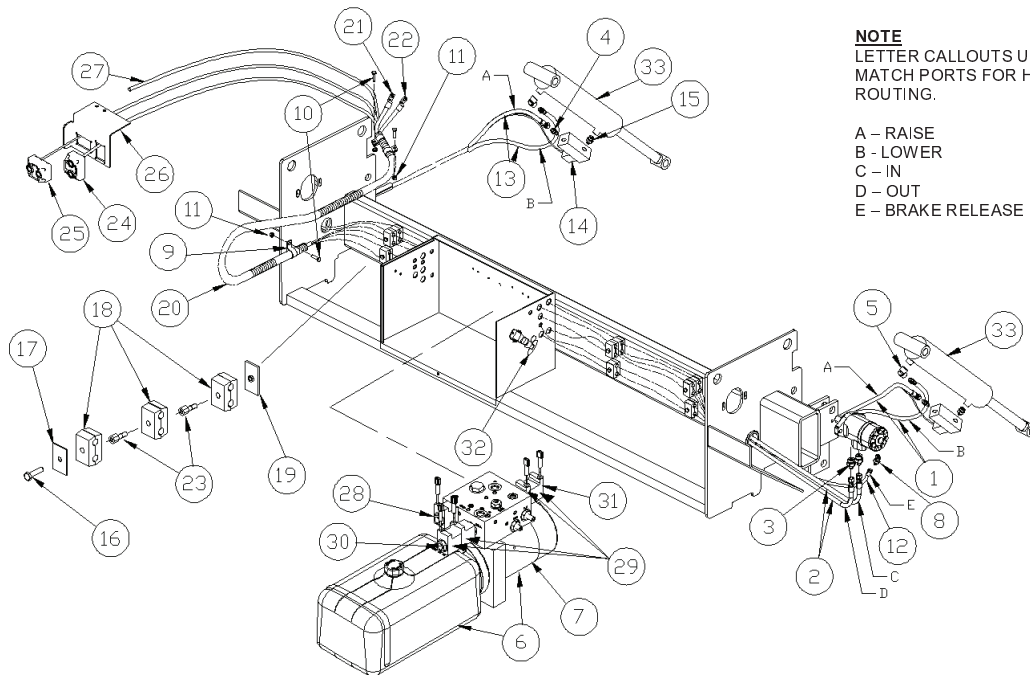
ITEM	PART NUMBER	QTY	DESCRIPTION
32	27391301	2	Draw Latch
33	27580020	2	Lift Cylinder for GT-33

WALTCO LIFT CORP.
DOMINO'S GTSL SERIES

REVISED:
E.O.
REV.

PM

HYDRAULIC AND ELECTRICAL COMPONENTS



WALTCO LIFT CORP.
DOMINO'S GTSL SERIES

REVISED:
E.O.
REV.

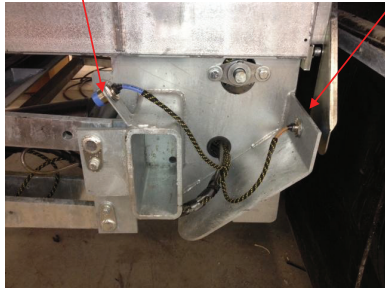
PM

ITEM	PART NUMBER	QTY	DESCRIPTION
1	91129884	2	Light, 3X Amber Marker ID Bar
2	91230985	1	Harness, DS, Work & Warning Light
3	91230986	1	Harness, CS, Work & Warning Light
4	91230982	1	Harness Motor Wiring
5	75089875	1	Proximity Switch Normally Closed
6	91230987	1	Proximity Switch Normally Open
7	91129936	1	Flasher for LED Lamps
8	85803921	7	Relay 12volt 30amp Max
9	75089854	2	15amp Fuse
10	80001065	1	Solenoid Replacement Kit

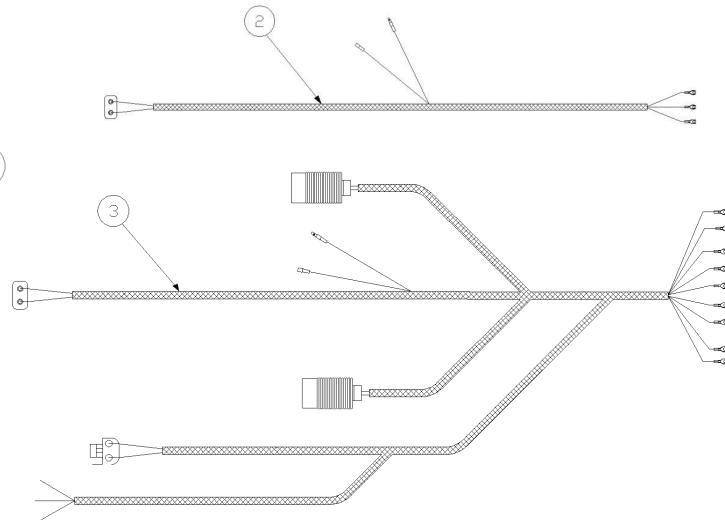
1



5



6

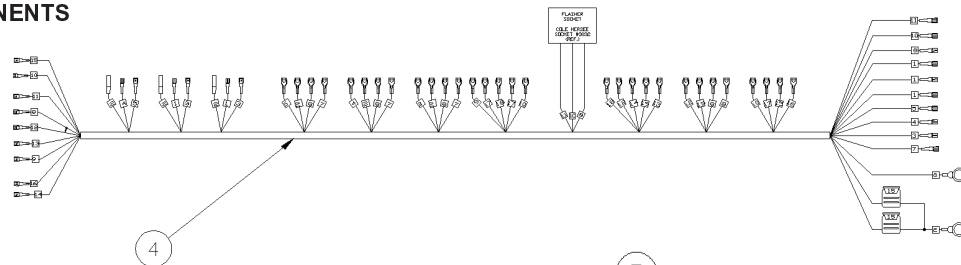


WALTCO LIFT CORP.
DOMINO'S GTSL SERIES

REVISED:
E.O.
REV.

PM

ELECTRICAL COMPONENTS



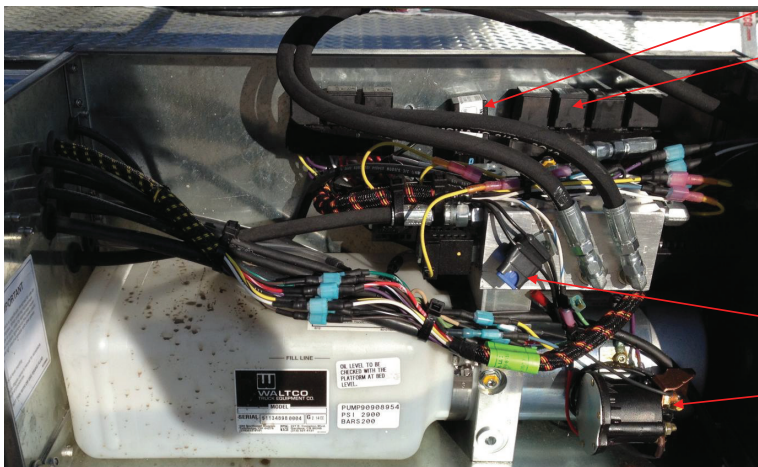
4

7

8

9

10



WALTCO LIFT CORP.
DOMINO'S GTSL SERIES

REVISED:
E.O.
REV.

PM

How To Order Parts

Repairs should be made only by authorized mechanics using WALTCO Replacement parts.

When ordering repair or replacement parts, please include all the information asked for below. If this information is not available, a complete written description or sketch of the required part will help WALTCO identify and deliver the needed part to you.

THE FOLLOWING INFORMATION MUST BE INCLUDED:

1. SERIAL NUMBER - [WALTCO liftgate serial numbers can be found on the Specification Tag attached to the mount frame.]
2. MODEL NUMBER
3. CAPACITY
4. PLATFORM SIZE

THEN INCLUDE THE FOLLOWING INFORMATION:

5. PART NUMBERS
6. DESCRIPTION
7. QUANTITY REQUIRED

MAIL, E-MAIL OR PHONE YOUR REQUEST TO:

Waltco Lift Corp
285 Northeast Avenue
Tallmadge, OH 44278
1-800-411-5685
FAX: 1-800-411-5684
E-MAIL: parts@waltco.com

ALL PARTS ARE F.O.B. FROM THE SHIPPING FACTORY

PLEASE NOTE:

To assure you of continuing and effective quality control, our warranty policy permits replacement of hydraulic cylinders, valves and motor pump units when their factory seals are intact. Parts under warranty will be exchanged promptly after careful inspection of the returned assemblies.

Notes