

Contents

| | |
|---|----|
| Introduction | 2 |
| Safety | 3 |
| Safety Is Your Responsibility. | 3 |
| Nomenclature | 4 |
| Platform Nomenclature | 4 |
| Power Unit Nomenclature | 4 |
| General Information | 5 |
| Decals | 5 |
| Ordering Parts | 5 |
| MTU Tuckunder Liftgate Service Parts | 6 |
| Power Unit Service Parts | 12 |
| Decals | 14 |

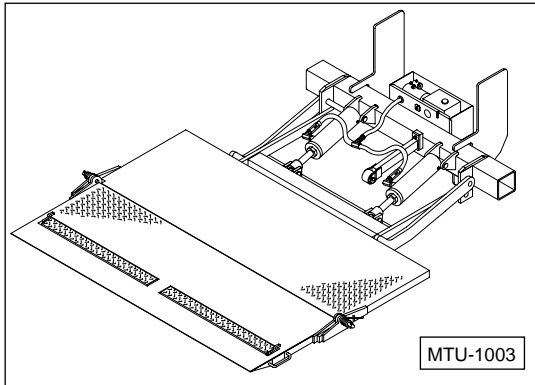
Introduction

Congratulations on selecting an Anthony liftgate. Anthony liftgates are among the finest liftgates available on the market today, and to ensure your liftgate will perform to your expectations we have provided the following manuals, designed to provide you with the necessary instructions and safety precautions to install and operate these models of Anthony Liftgates:

1. Installation, Operation, Troubleshooting, and Maintenance Manual for MTU Model Magnum Tuckunder Liftgates - Form No. MTU-IO-12/02
2. Parts Manual for MTU Model Magnum Tuckunder Liftgates - Form No. MTU-P-12/02

This Parts Manual contains part numbers for past and present Anthony liftgates. The parts illustrated in the parts drawings are representative of typical parts used in the actual Magnum Tuckunder liftgate and may not look exactly like the part(s) on your liftgate. Part numbers and drawings are subject to change without notice. At the bottom of each page is the Anthony Liftgates Inc. Product Support phone number.

All Anthony Magnum Tuckunder model liftgates are factory assembled, tested, and energized to assure the highest quality performance standards. MTU liftgates ship completely assembled on skids for fast, clean, and easy installation.



Safety Is Your Responsibility

DANGER



To avoid personal injury or death, carefully read and understand all instructions pertaining to the Anthony Liftgates product. Do not attempt to install, operate, or maintain our product without fully understanding all our instructions and safety precautions. Do not operate or work on a truck or liftgate unless you have read and understand all of the instructions and warnings in the MTU-IO-12/02 Installation, Operation, and Maintenance manual. If any doubt or question arises about the correct or safe method of performing anything found in this or other manuals from Anthony Liftgates, contact your Anthony Liftgates dealer or call the Inside Sales and Service representatives at our main headquarters (815-842-3383). Proper care is your responsibility.

Anthony Liftgates cannot anticipate every possible circumstance that might involve a potential hazard. The warnings in this manual and on the product itself are, therefore, not all inclusive. If tools, procedures, work methods, or operating techniques that are not specifically mentioned by Anthony Liftgates are used, you must satisfy yourself that it is safe for you and for others.

Make sure the product or truck the liftgate is mounted onto will not be damaged or made unsafe by any operation, lubrication, maintenance, or repair procedures that you choose.

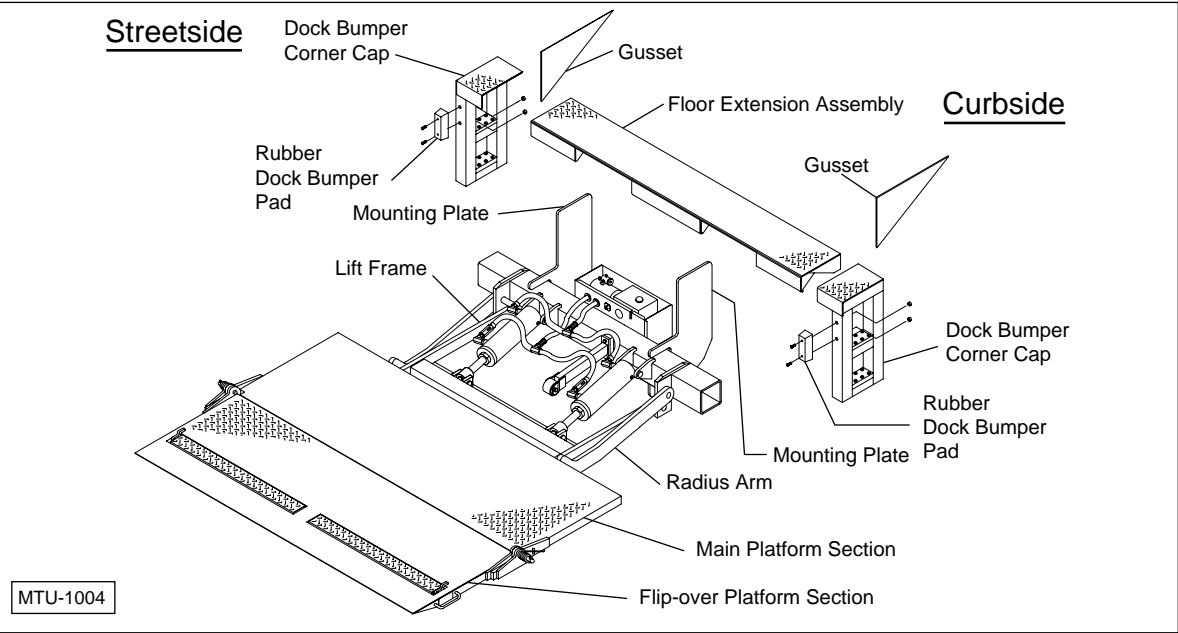
DO NOT proceed, if any doubt arises about the correct or safe method of performing anything found in this or other Anthony Liftgates manuals. Seek out expert assistance from a qualified person before continuing.

DANGER

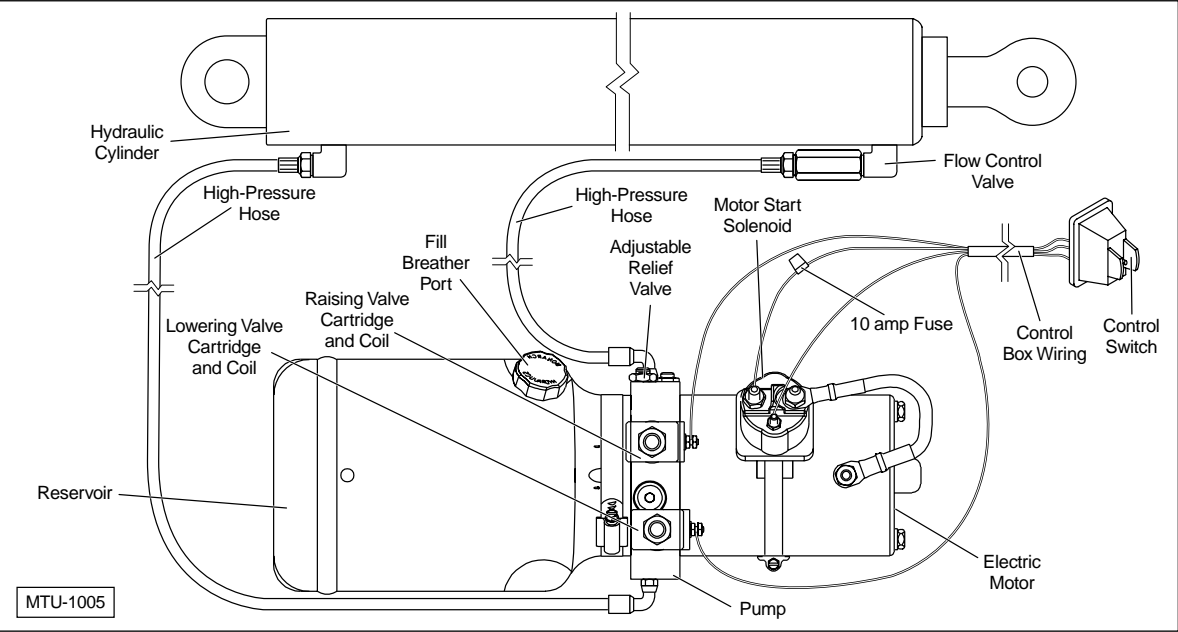


Most accidents involving the operation, maintenance, or repair of products made by Anthony Liftgates occur because the owner/operator failed to observe basic safety rules or operating instructions. An accident can often be avoided by being alert and recognizing potentially hazardous situations. Any individuals operating, maintaining, or repairing products manufactured by Anthony Liftgates should have the necessary training, skills, and tools required to perform the functions properly and safely. The safety information in this manual serves as a basic guide in an attempt to prevent injury or death.

Nomenclature



Platform nomenclature.



Power unit nomenclature.

General Information

Decals



Make sure all decals are attached to the liftgate and/or truck and are legible at all times.

Safety decals provide a vital role in helping to reduce injuries or possibly even death. To ensure the greatest level of safety, all decals must be in place and legible at all times. Remember, it is the users responsibility to maintain these decals. For a complete list and illustration of the decals used on the Magnum Tuckunder liftgate, refer to the Decals section in this manual.

For replacement decals contact:

Anthony Liftgates, Inc.
1037 West Howard Street
Pontiac, Illinois 61764
(815) 842-3383
www.anthonyliftgates.com

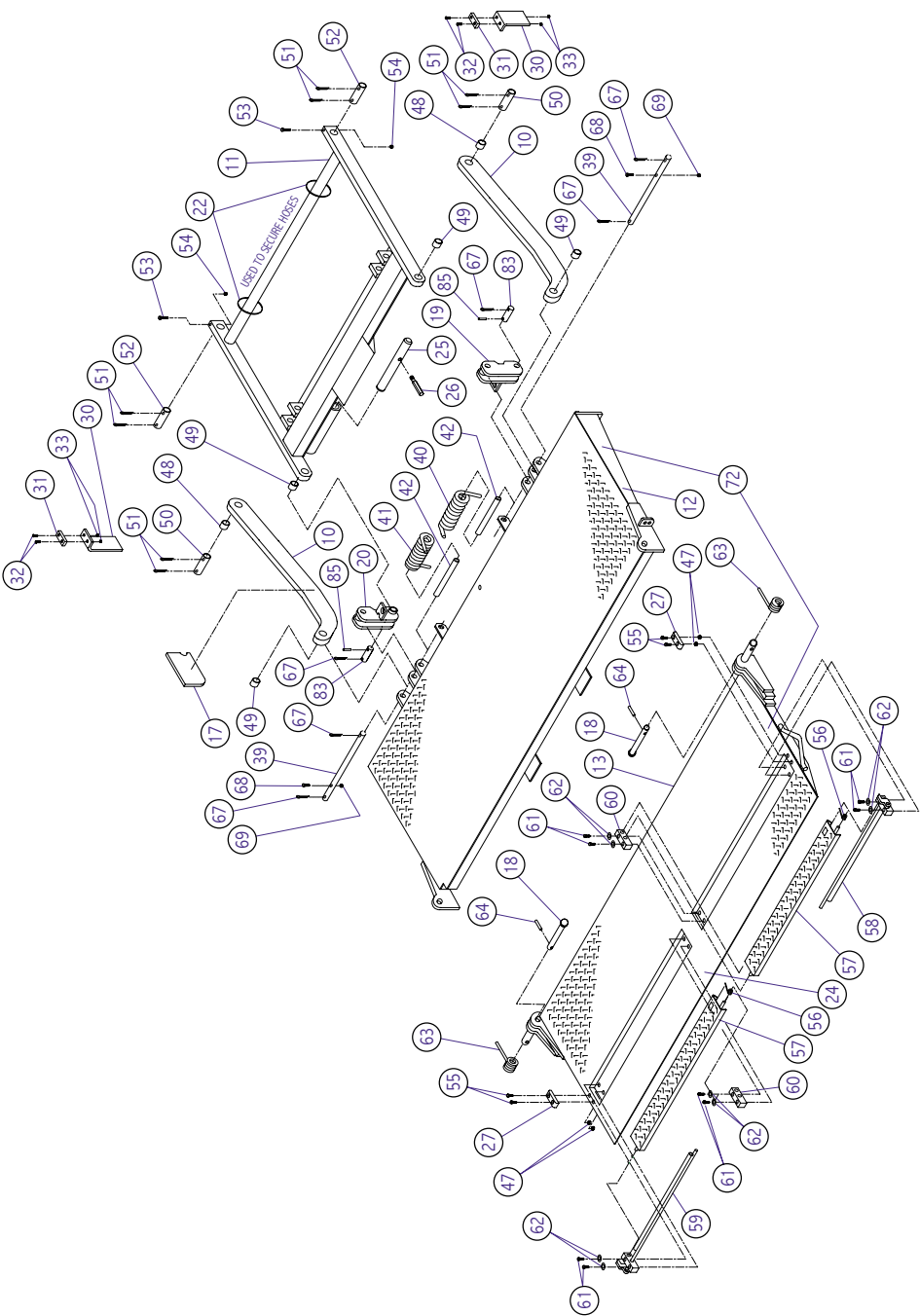
Ordering Parts

We manufacture a quality liftgate that requires very little maintenance or repair. However, should a part break or become damaged our knowledgeable staff can make sure you receive the part(s) to put your liftgate back into operation.

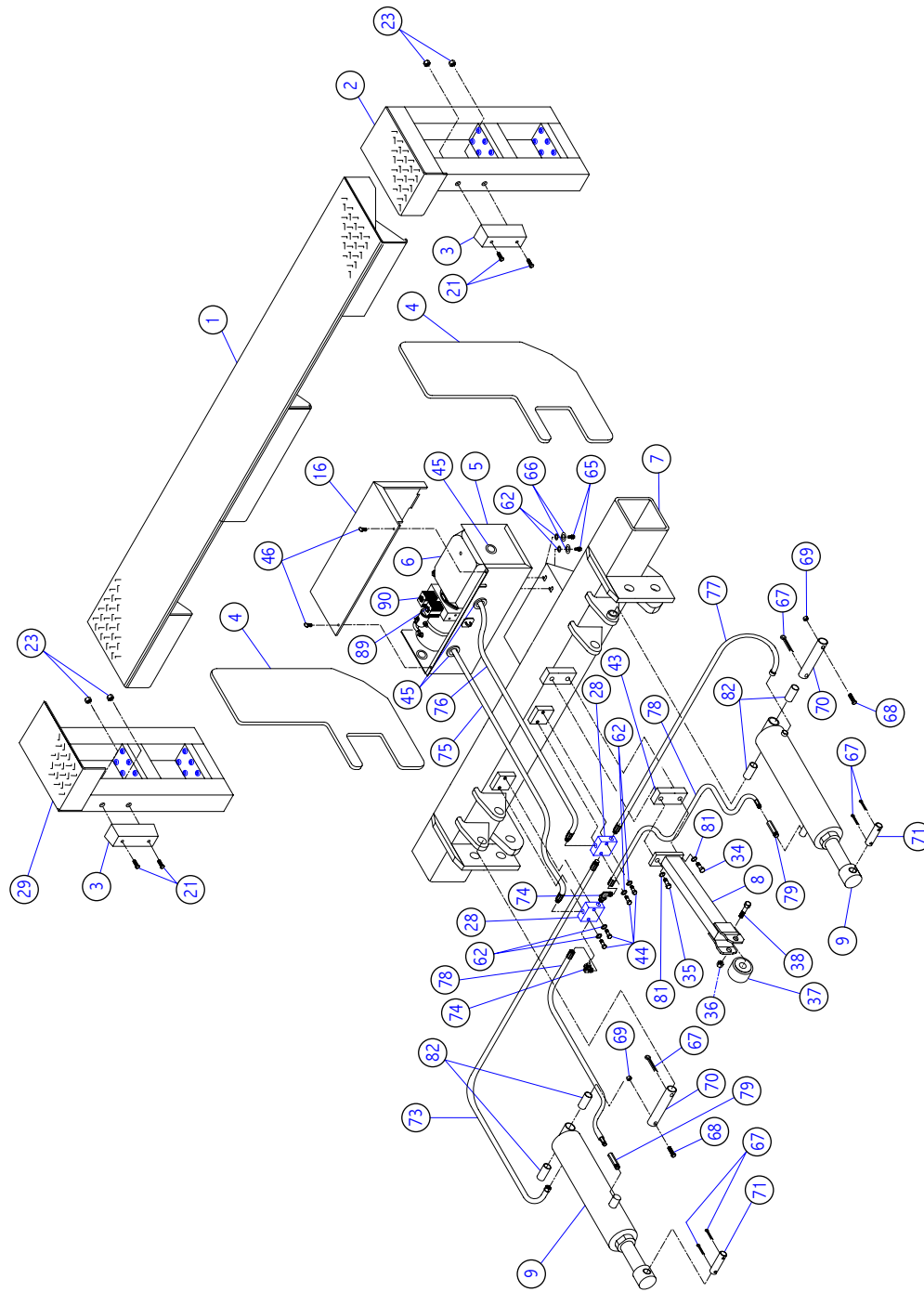
For questions or to order parts, contact:

Anthony Liftgates, Inc.
1037 West Howard Street
Pontiac, Illinois 61764
(815) 842-3383
www.anthonyliftgates.com

Magnum Tuckunder SF Liftgate Service Parts



MTU-1001

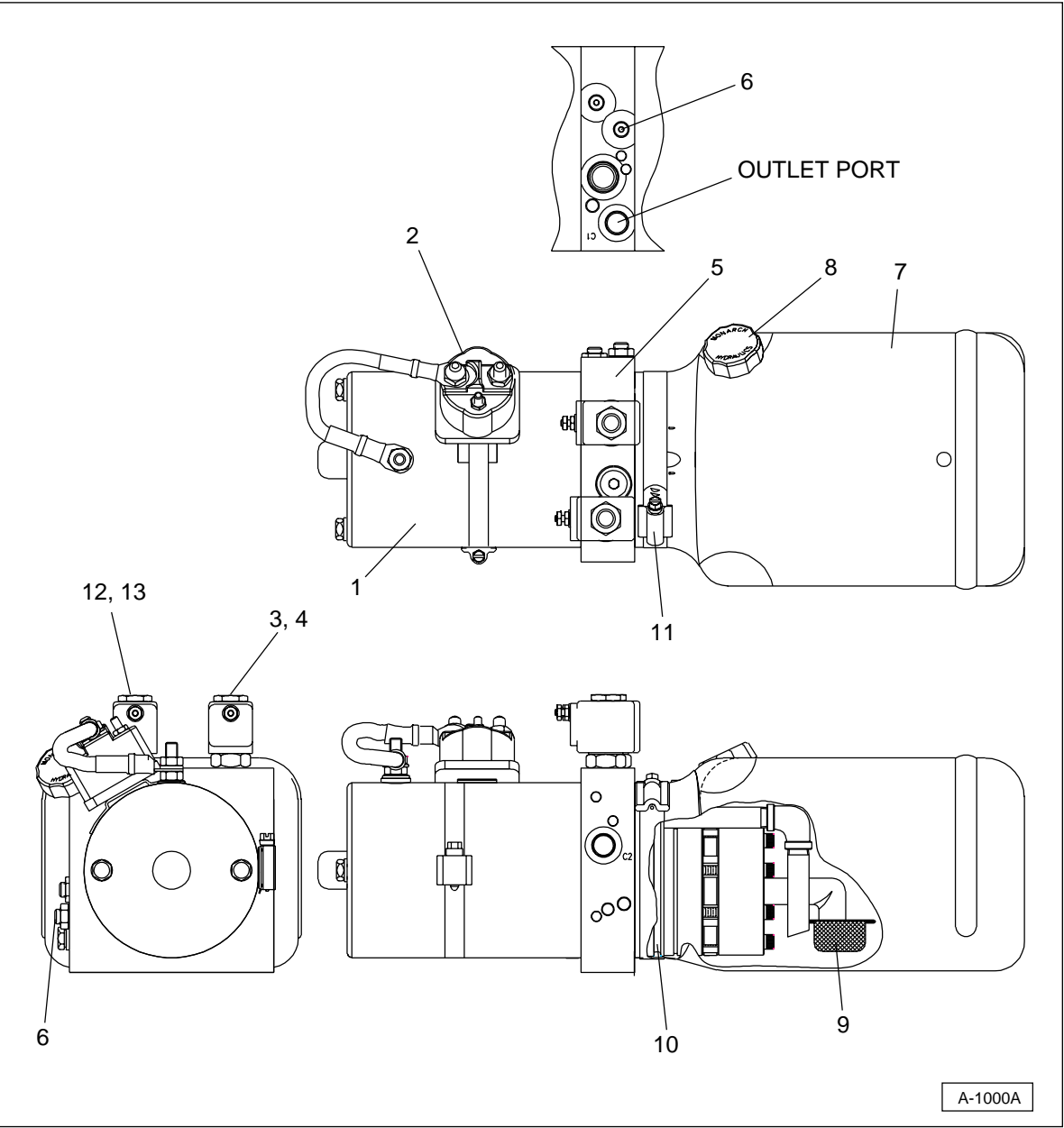


| Magnum Tuckunder SF Liftgate Service Parts | | | |
|--|----------------------|--|------|
| Item | Part No. | Description | Qty. |
| 1 | A-140028 A-140056 | Floor Extension (96 inches) Floor Extension (102 inches) | 1 |
| 2 | A-140062 | Dock Bumper (Curbside) | 2 |
| 3 | ATU-126 | Dock Bumper Pad, Rubber | 1 |
| 4 | A-140022 | Mounting Plate | 2 |
| 5 | ATU-531 | Pump Box Enclosure (Bottom Only, No Top) | 1 |
| 6 | A-130202 | Power Pack (Power Down, Hi Flow) | 1 |
| 7 | A-140011 | Adapter Frame | 1 |
| 8 | ATU-243 | Wheel Arm | 1 |
| 9 | A-130114 | Hydraulic Cylinder (4 Inch Bore, 10-3/4 Inch Stroke) | 2 |
| 10 | ATU-034 | Radius Arm | 2 |
| 11 | A-140015 | Lift Frame | 1 |
| 12 | A-140006 | Main Platform (Steel) | 1 |
| 13 | A-140042 | Flip-Over Platform (Aluminum) | 1 |
| 14 | A-140035 | Cart Stop Assembly (Streetside) (Includes A-140037 (2), A-140080 (1), A-140082 (1), A-140048 (1)) | 1 |
| 15 | A-140079 | Cart Stop Assembly (Curbside) (Includes A-140037 (2), A-140081 (1), A-140082 (1), A-140048 (1)) | 1 |
| 16 | ATU-533 | Pump Box Cover | 1 |
| 17 | ATU-558 | Latch Locking Plate | 1 |
| 18 | A-140005 | Platform Hinge Pin | 2 |
| 19 | A-140025 | Cam Plate (Right, Curbside) | 1 |
| 20 | A-140053 | Cam Plate (Left, Streetside) | 1 |
| 21 | 2149 | Bolt, 3/8"-16 x 2 1/4" Long Hex Head, Plated | 4 |
| 22 | A-150095 | Wire Tie, Stainless Steel (used to secure hoses to lift frame) | 2 |
| 23 | A-132038 | Nut, 3/8-16 | 4 |
| 24 | A-140083 | Flip-Over Platform Assembly (Complete with cart stops installed.) | 1 |
| 25 | ATU-556 | Latch Pin | 1 |
| 26 | ATU-557 | Latch Handle | 1 |
| 27 | A-140090 | Handle Guard (Plastic) | 2 |
| 28 | A-130030 | T-Fitting Block | 2 |
| 29 | A-140063 | Dock Bumper (Streetside) | 1 |
| 30 | A-140086 | Platform Support Plate | 2 |
| 31 | A-155037 | Rubber Bumper Pad | 2 |
| 32 | S-047004 | Stove Bolt, 1/4-20 x 1 Inch Long | 4 |
| 33 | 2029 | Locking Nut, Hex Head | 4 |

| Magnum Tuckunder SF Liftgate Service Parts (cont'd) | | | |
|---|----------|---|------|
| Item | Part No. | Description | Qty. |
| 34 | ATU-260 | Bolt, Lower Wheel Arm, 1/2-13 x 1-1/4 Inch Long (grade 8) | 1 |
| 35 | ATU-259 | Bolt, Upper-Wheel Arm, 1/2-13 x 2 Inch Long (grade 8) | 1 |
| 36 | 2184 | Nut, Wheel Arm | 1 |
| 37 | ATU-123 | Wheel, With Spacer and Washers (2) | 1 |
| 38 | 2148 | Bolt, Wheel Arm | 1 |
| 39 | A-140023 | Platform Pin, 1 Inch Diameter | 2 |
| 40 | A-140070 | Spring, Main Platform (Curbside) | 1 |
| 41 | A-140071 | Spring, Main Platform (Streetside) | 1 |
| 42 | A-140095 | Spring Tube Spacer | 2 |
| 43 | A-140096 | Spacer Block | 1 |
| 44 | 25 | Bolt, 3/8-16 x 1-1/2 Inch Long | 4 |
| 45 | ATU-137 | Grommet | 4 |
| 46 | A-132029 | Thumb Screw | 2 |
| 47 | 2114 | Whizz Lock Nut, 5/16 Inch | 4 |
| 48 | ATU-428 | Bushing, Radius Arm, 1-1/4 Inch Inside Diameter | 2 |
| 49 | ATU-426 | Bushing, 1 Inch Inside Diameter | 4 |
| 50 | A-140046 | Pin, Radius Arm | 2 |
| 51 | A-132002 | Cotter Pin (Stainless), 1/4 Inch x 2 Inch Long | 8 |
| 52 | A-140045 | Lift Frame Pin | 2 |
| 53 | A-132039 | Lift Frame Pin Lock Bolt, 3/8 x 3 Inch Long (Grade 8) | 2 |
| 54 | 2064 | Lock Nut, 3/8 Inch | 2 |
| 55 | 2114 | Bolts, Cart Stop Handle Guard and Lock Nut | 4 |
| 56 | A-140048 | Spring, Cart Stop | 2 |
| 57 | A-140082 | Cart Stop, Channel Weldment | 2 |
| 58 | A-140081 | Cart Stop Handle Weldment (Curbside) | 1 |
| 59 | A-140080 | Cart Stop Handle Weldment (Streetside) | 1 |
| 60 | A-140037 | Block, Cart Stop | 4 |
| 61 | 2019 | Bolt and Nut, 3/8-16 x 1-1/4 Inch Long | 8 |
| 62 | 2054 | Lock Washer (Plated), 3/8 Inch | 14 |
| 63 | ATU-326M | Platform Assist Spring | 2 |
| 64 | ATU-341 | Pin, Lock | 2 |
| 65 | 874 | Bolt, 3/8 Inch x 1 Inch Long | 2 |
| 66 | 2058 | Washer | 2 |
| 67 | A-132026 | Cotter Pin | 12 |
| 68 | ATU-358 | Bolt, 1/4-20 x 2 Inch Long (Grade 8) | 4 |

| Magnum Tuckunder SF Liftgate Service Parts (cont'd) | | | |
|---|----------|--|------|
| Item | Part No. | Description | Qty. |
| 69 | ATU-359 | Nut, Hex Head, 1/4-20 (Grade 8) | 4 |
| 70 | ATU-055 | Pin, Cylinder (Long) | 2 |
| 71 | ATU-039 | Pin, Cylinder (Short) | 2 |
| 72 | A-140091 | Complete Platform Assembly, Main and Flip-Over With Cart Stops | 1 |
| 73 | A-130211 | Hydraulic Hose, (Aluminum, T-Block to Cylinder "Down", Streetside) | 1 |
| 74 | A-130140 | Adapter Fitting, 90 Degree Elbow | 2 |
| 75 | A-130203 | Hydraulic Hose, (Aluminum T-Block to Power Unit "Up") | 1 |
| 76 | A-130213 | Hydraulic Hose, (Aluminum T-Block to Power Unit "Down") | 1 |
| 77 | A-130210 | Hydraulic Hose, (Aluminum T-Block to Cylinder "Down", Curbside) | 1 |
| 78 | A-130111 | Hydraulic Hose, (Aluminum T-Block to Both Cylinder "Up" Ports) | 2 |
| 79 | A-130101 | Restrictor Valve, 2-1/4 GPM | 2 |
| 80 | ATU-143 | Decal, "Secure Latch" | 1 |
| 81 | 1691 | Lock Washer, 1/2 Inch | 2 |
| 82 | ATU-427 | Cylinder Bushing | 4 |
| 83 | ATU-105 | Cam Pin | 2 |
| 84 | ATU-177 | Decal, "Maximum Capacity" | 1 |
| 85 | S-070011 | Roll Pin | 2 |
| 86 | ATU-434 | Battery Cable [Long, #2 Gauge x 21-1/2 Inches Long (Not Shown)] | 1 |
| 87 | ATU-435 | Battery Cable [Short, #2 Gauge x 30 Inches Long (Not Shown)] | 1 |
| 88 | A-150411 | Circuit Breaker and Bracket (Not Shown) | 1 |
| 89 | A-130215 | Cartridge Valve (Raising, Coil and Cartridge) | 1 |
| 90 | A-130216 | Cartridge Valve (Lowering, Coil and Cartridge) | 1 |
| 91 | ATU-423 | Decal, "Operations" | 1 |
| 92 | ATU-424 | Decal, "Reset Circuit Breaker" | 1 |
| 93 | A-150238 | Decal, "Notice - This Liftgate Is Protected By A Circuit Breaker" | 1 |
| 94 | Q-003013 | Decal, "Urgent Warning" | 1 |
| 95 | A-150477 | Switch, Toggle (Not Shown) | 1 |
| 96 | A-150031 | Cut-Off Switch (Not Shown) | 1 |
| 97 | ATU-394 | Switch Box Assembly (Not Shown) | 1 |
| 98 | A-150437 | Fuse Holder (Not Shown) | 1 |
| 99 | A-150438 | Fuse, 10 Amp, ATO Type, (Not Shown) | 1 |
| 100 | A-150468 | Control Cable, 16/4 Type, SJO, 10 Feet Long (Not Shown) | 1 |
| 101 | A-150495 | Circuit Breaker, Manual Reset, 150 Amp, (Not Shown) | 1 |
| 102 | ATU-239 | Complete Switch Assembly (Not Shown) | 1 |

Power Unit Service Parts

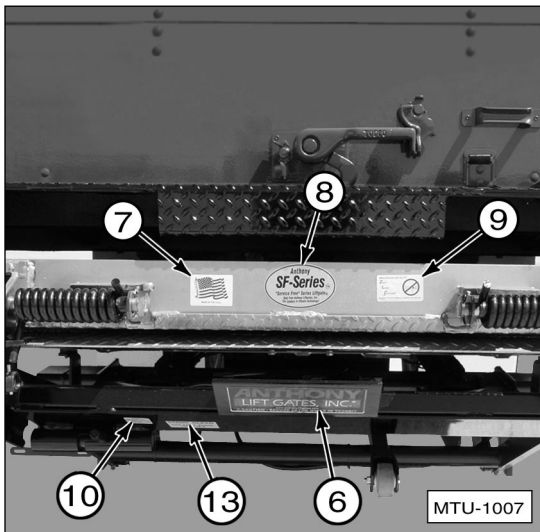
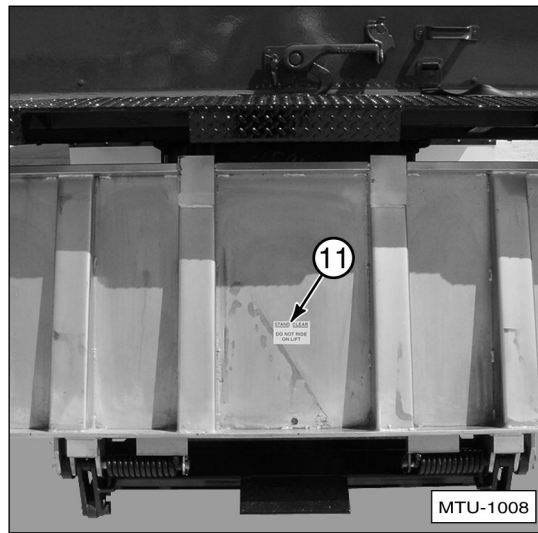
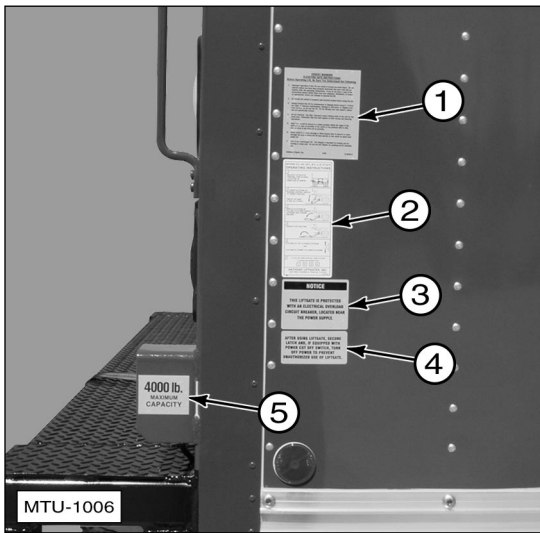


Monarch, power down, pump shown above.

| Power-Down, Power Unit Service Parts | | | |
|--------------------------------------|----------|------------------------------|---------|
| Item | Part No. | Description | Remarks |
| Monarch Service Parts | | | |
| 1 | A-150018 | Motor | |
| 2 | ATU-120 | Motor Start Solenoid | |
| 3 | A-130216 | Lowering Valve with Coil | |
| 4 | — | Coil (Lowering Valve) | |
| 5 | — | Pump | |
| 6 | — | Adjustable Relief Valve | |
| 7 | A-150635 | Plastic Reservoir | |
| 8 | A-150546 | Plastic Reservoir Cap | |
| 9 | — | Plastic Reservoir Filter | |
| 10 | A-150019 | O-ring for Plastic Reservoir | |
| 11 | ATU-565 | Plastic Reservoir Clamp | |
| 12 | A-130215 | Raising Valve with Coil | |
| 13 | — | Coil (Raising Valve) | |

Decals

| MTU Tuckunder Liftgate Safety Decals | | | | |
|---|----------|---|-----|--|
| Item | Part No. | Description | Qty | Remarks |
| 1 | Q-003013 | Urgent Warning - Elevating Gate Instructions... | 1 | On side of truck body. |
| 2 | ATU-423 | Operating Instructions | 1 | On side of truck body. |
| 3 | A-150238 | Notice - This liftgate is protected... | 1 | On side of truck body. |
| 4 | ATU-141 | After Using Liftgate, Secure Latch... | 1 | On side of truck body. |
| 5 | ATU-147 | 3000 lb. Maximum Capacity | 1 | On side of truck body on 3000 Models Only. |
| | A-171433 | 4000 lb. Maximum Capacity | 1 | On side of truck body on 4000 Models Only. |
| 6 | A-131034 | Anthony Hydraulic Lift Gate label | 1 | On back of liftgate. |
| 7 | A-150601 | Flag — Made in the USA | 1 | Inside edge of platform. |
| 8 | A-131003 | SF Series | 1 | Inside edge of platform. |
| 9 | A-131026 | Zero Leak Concept | 1 | Inside edge of platform. |
| 10 | A-131017 | Note: Disengage "latch"... | 1 | On bottom of main platform. |
| 11 | ATU-146 | Stand Clear Do Not Ride on Lift | 2 | On bottom of main platform and on bottom of flip-over section. |
| 12 | ATU-424 | Reset Circuit Breaker | 1 | On circuit breaker bracket. |
| 13 | ATU-143 | Secure Latch While in Transit | 1 | Place by latch assembly. |



1. Q-003013

URGENT WARNING **ELEVATING GATE INSTRUCTIONS** **Before Operating Lift, Be Sure You Understand the Following.**

1. Improper operation of this lift can result in serious personal injury. Do not operate unless you have been properly instructed and have read and are familiar with, the operating instructions. If you do not have a copy of the instructions please obtain them from your employer, distributor, or lessor, as appropriate, before you attempt to operate the lift.
2. Be certain the vehicle is properly and securely braked before using the lift.
3. Always inspect this lift for maintenance or damage before using it. If there are signs of improper maintenance, damage to vital parts, or slippery platform surface, do not use the lift. Do not attempt your own repairs, unless you are specifically trained.
4. Do not overload. See Mfg. Literature and/or Rating Label on the unit for the rated load. Remember that this limit applies to both raising and lowering operations.
5. Each load should be placed in a stable position within the edges of the platform as near as possible to the center of the platform side to side, and as close to the truck sill as possible.
6. Never stand in or move through or allow anyone else to stand in or move through the area in which the lift may operate or into which an upset load might fall.
7. This is not a passenger lift. This liftgate is intended for loading and unloading of cargo only. Do not use this liftgate for anything but its intended use.

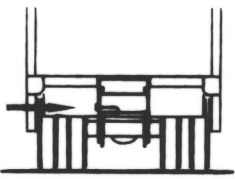
Anthony Liftgate, Inc.

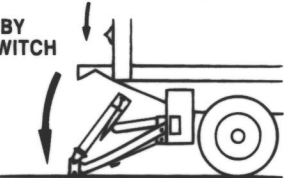
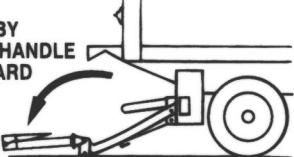
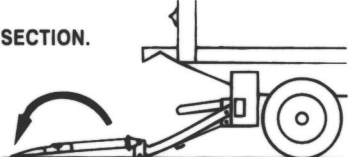

6/95

Q-003013

2. ATU-423

ANTHONY ATU, AST, ASTL, MTU, & LB LIFTGATE OPERATING INSTRUCTIONS

- 1
UNLATCH LIFTGATE BY
TWISTING, THEN SLIDING
"LATCH PIN" IN
DIRECTION OF ARROW.

- 2
LOWER PLATFORM BY
PUSHING CONTROL SWITCH
TO "DOWN" POSITION.

Platform will begin
to open as it lowers.

- 3
UNFOLD PLATFORM BY
PULLING PLATFORM HANDLE
OUTWARD AND TOWARD
GROUND.

- 4
UNFOLD "FLIP" SECTION.

- 5
FLIP SWITCH "UP" TO RAISE PLATFORM
-OR-
FLIP SWITCH "DOWN" TO LOWER PLATFORM

- 6
TO TUCK UNIT UNDER AFTER USE, LOWER PLATFORM
TO GROUND AND REVERSE STEPS

1

2

3

4

ANTHONY LIFTGATES, INC.
1037 WEST HOWARD ST. PONTIAC, IL 61764
ATU-423

3. A-150238

NOTICE

**THIS LIFTGATE IS PROTECTED
WITH AN ELECTRICAL OVERLOAD
CIRCUIT BREAKER, LOCATED NEAR
THE POWER SUPPLY.**

4. ATU-141

**AFTER USING LIFTGATE, SECURE
LATCH AND, IF EQUIPPED WITH
POWER CUT OFF SWITCH, TURN
OFF POWER TO PREVENT
UNAUTHORIZED USE OF LIFTGATE.**

5. ATU-147

**3000 lb.
MAXIMUM
CAPACITY**

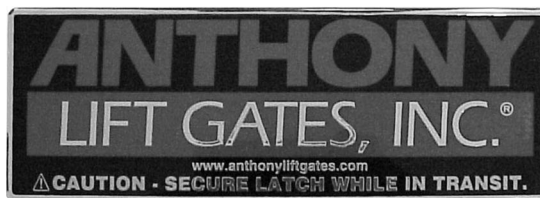
5. A-171433



IMPORTANT NOTICE

Make sure the proper "maximum capacity" decal goes on the appropriate liftgate. For example, "3000 Lb. Maximum Capacity" decal goes on MTU3000 models only. Do not put a higher rated decal (4000 pound) on a smaller liftgate; this could result in liftgate damage or possibly personal injury.

6. A-131034



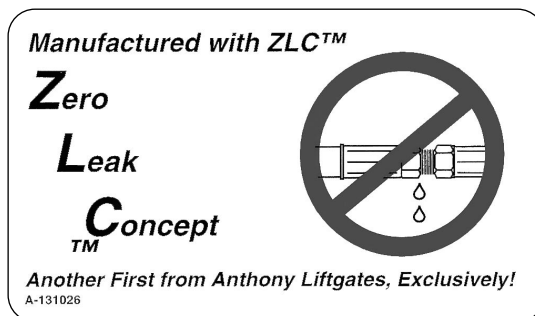
7. A-150601



8. A-131003



9. A-131026



10. A-131017

Note:

Disengage “latch” before attempting to use liftgate.

Engage “latch” after using liftgate.

A-131017

11. ATU-146

STAND CLEAR

**DO NOT RIDE
ON LIFT**

12. ATU-424 (located on circuit breaker)



WARNING

To avoid injury, be certain liftgate area is clear before resetting circuit breaker.

Circuit breaker must cool before resetting.

Reset by pressing lever (or button).

If circuit breaker continues to trip, contact a qualified mechanic.

ATU-424

13. ATU-143

**SECURE LATCH WHILE
IN TRANSIT**



P/N ATU-143

Model Number: _____

[illegible]

