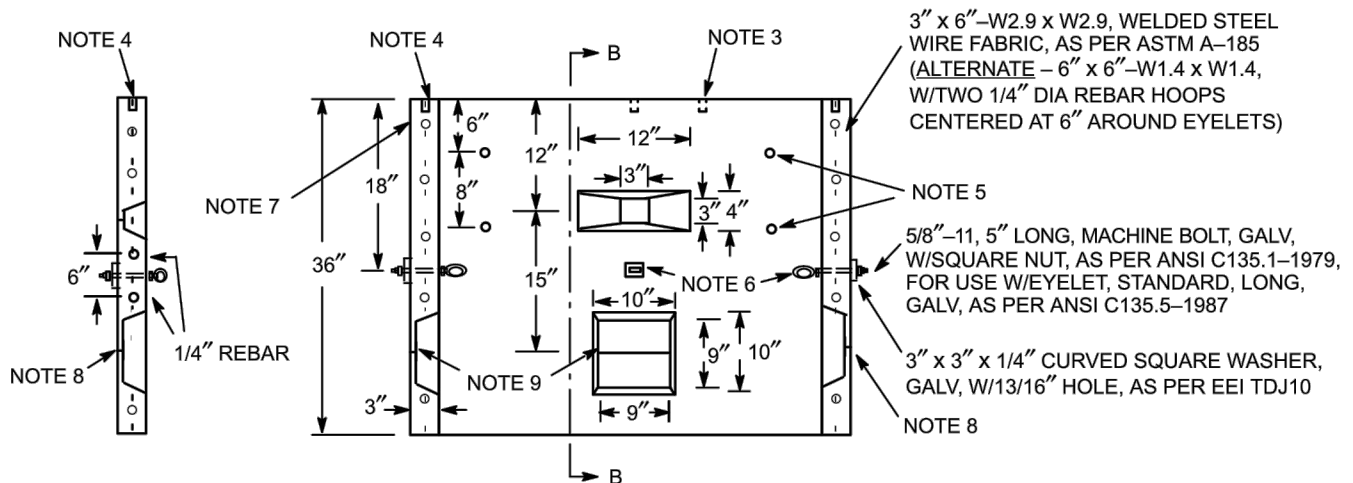
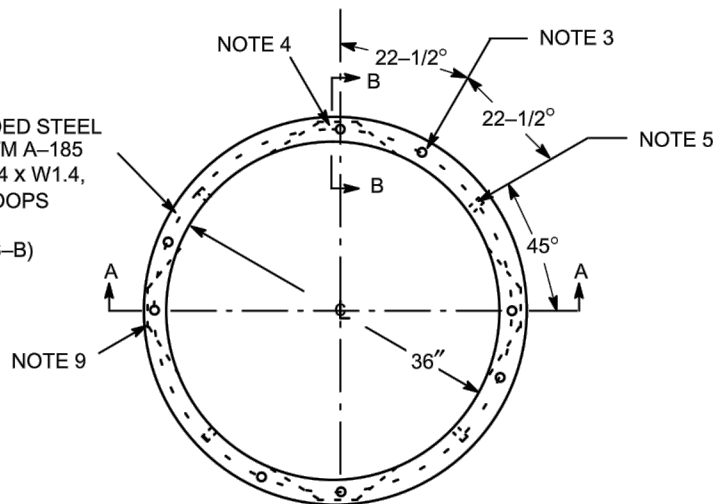


REV	DATE	DES	REV_DESC	LJH	WHR	JML
11/18/13	XXX		REVISION DESCRIPTION	CADD	CHK	RW

3" x 6"-W2.9 x W2.9, WELDED STEEL WIRE FABRIC, AS PER ASTM A-185 (ALTERNATE - 6" x 6"-W1.4 x W1.4, W/TWO 1/4" DIA REBAR HOOPS CENTERED AT 6" AROUND EYELETS. SEE SECTION B-B)



SECTION B-B

(SHOWS ALTERNATE REBAR LOCATION)

SECTION A-A

Notes

1. Concrete and concrete design shall be in accordance with ACI 318-1995.
2. Concrete strength 5000 psi at 28 days. Air entrainment 6 to 8 percent.
3. Four zinc alloy inserts 3/8" - 16 x 1-3/8" equally spaced on 38-1/2" bolt circle.
4. Four zinc alloy inserts 5/8" - 11 x 1-11/16" equally spaced on 38-1/2" bolt circle.
5. Eight zinc alloy inserts 3/8" - 16 x 1-3/8".
6. Four eyelets, for use as pulling points, shall be installed adjacent to and centered above knockouts as shown.
7. Manufacturer's identification and month/year when manufactured shall be legibly marked in/on concrete on the outside upper part.
8. Location of each knockout shall be identifiable from exterior of handhole by providing a 3" diameter circle imprinted 1/4" deep into the concrete. Center of the imprinted circle shall be located at center of each knockout.
9. All knockouts shall have a web thickness not to exceed 3/4" ± 1/8". Knockouts to be free of reinforcement.
10. The two recesses 12" from top are for use with adjustable lifter tool only.
11. Eyelets and zinc alloy inserts not to be used for lifting.



PROJECT			
TITLE NORTHEAST UTILITIES SPC H-020 SILO			
DESIGN	BGR	11/18/13	FILE No.
CADD	LJH	11/18/13	SCALE AS SHOWN
REVIEW			REV. 0
PROJECT No.			

ORIGINAL	HANDHOLE - ROUND - PRECAST CONCRETE			
5/13/86	36" DIAMETER x 36" HIGH			
APPROVED				
6/9/00	NORTHEAST UTILITIES	MATERIAL SPECIFICATION	SPC H-020	6

DRAWING: