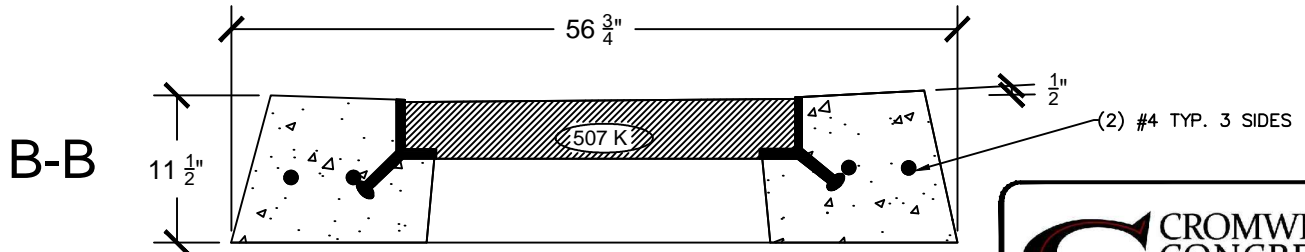
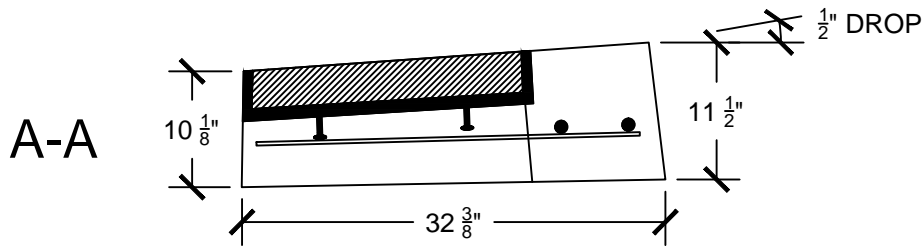
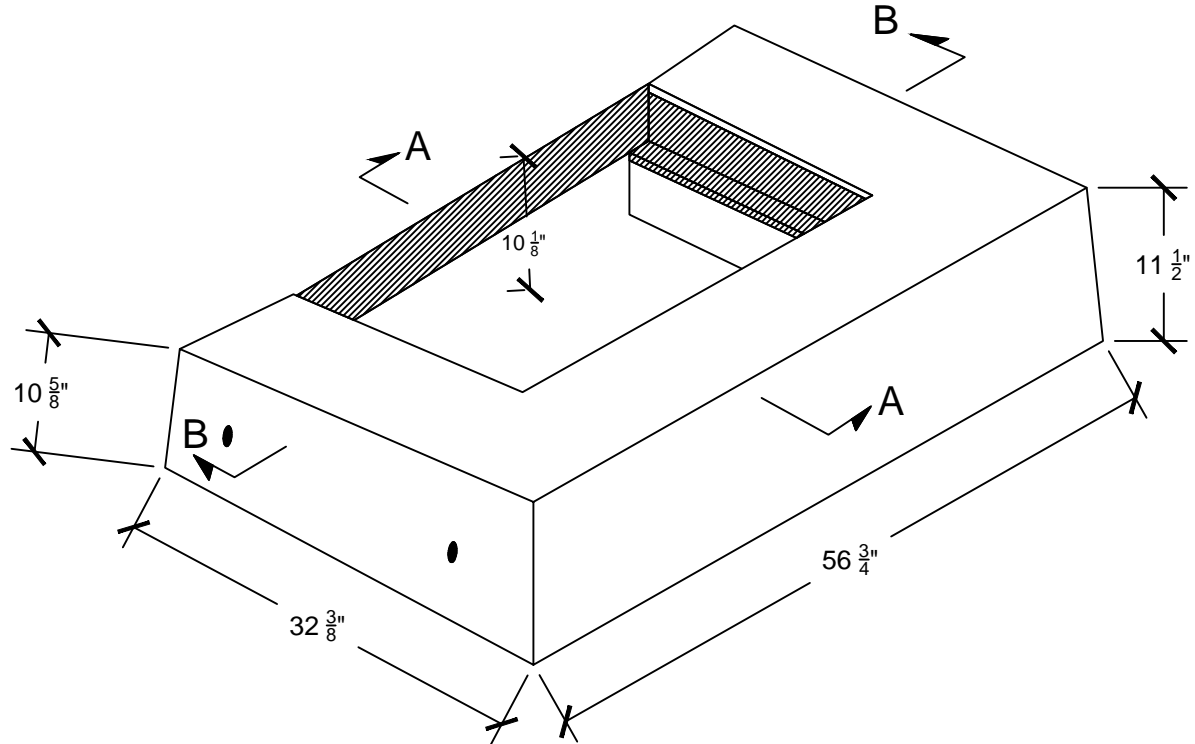



△	11/18/13	XXX	REV_DESC	LJH	WHR	JML
REV	DATE	DES	REVISION DESCRIPTION	CADD	CHK	RWW

CMC BARRIER TYPE TOP

PAINTED OR GALVANIZED
 CONFORMS TO ASTM C913
 WEIGHT: 1700 LBS.



**CLASS "FSC" SELF-CONSOLIDATING CONCRETE
 4,000 PSI**

 CROMWELL CONCRETE PRODUCTS INC.			
PROJECT			
TITLE			
CMC BARRIER TYPE TOP			
DESIGN	BGR	01/21/14	FILE No.
CADD	PJK	4/25/2014	SCALE AS SHOWN
REVIEW			REV. 0
PROJECT No.			
DRAWING: CMC BARRIER			