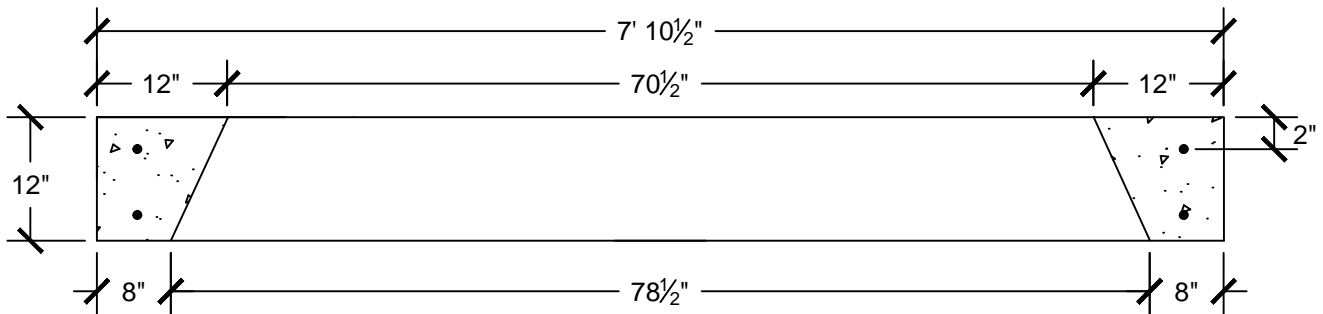
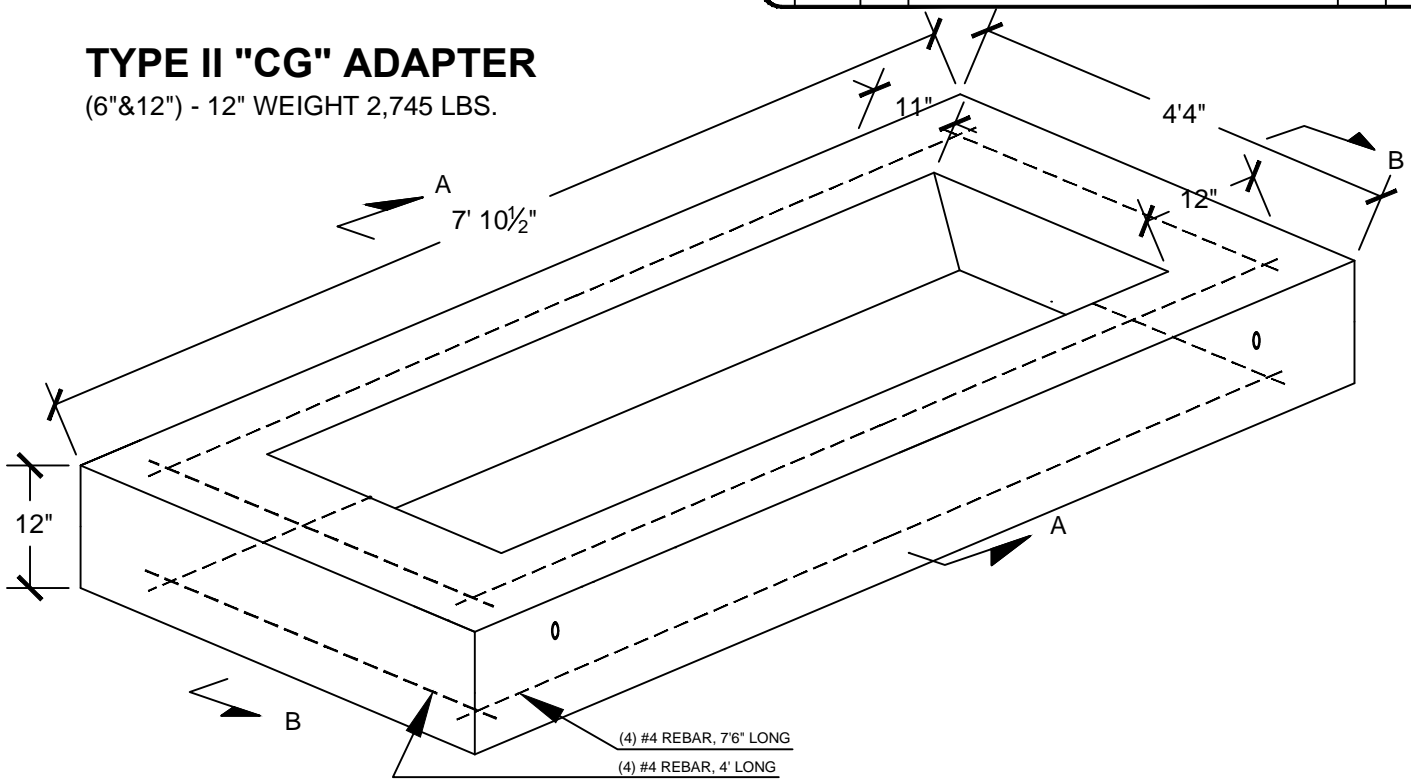


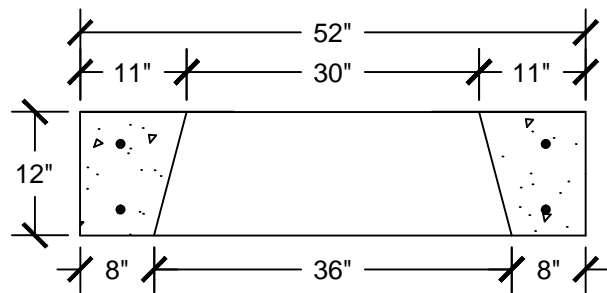
01/21/16	XXX	REV_DESC	MF	WHR	MW
REV	DATE	DES	CADD	CHK	RVW
REVISION DESCRIPTION					

TYPE II "CG" ADAPTER

(6" & 12") - 12" WEIGHT 2,745 LBS.




SECTION B-B



SECTION A-A

CLASS "FSC" SELF-CONSOLIDATING CONCRETE
4,000 PSI



**CROMWELL
CONCRETE
PRODUCTS INC.**

PROJECT

TITLE
TYPE II "CG" ADAPTER

DESIGN	BGR	01/21/16	FILE No.
CADD	MF	01/21/16	SCALE AS SHOWN
REVIEW	MW	01/21/16	REV. 0
PROJECT No.			

DWG: T2 CG ADAPTER