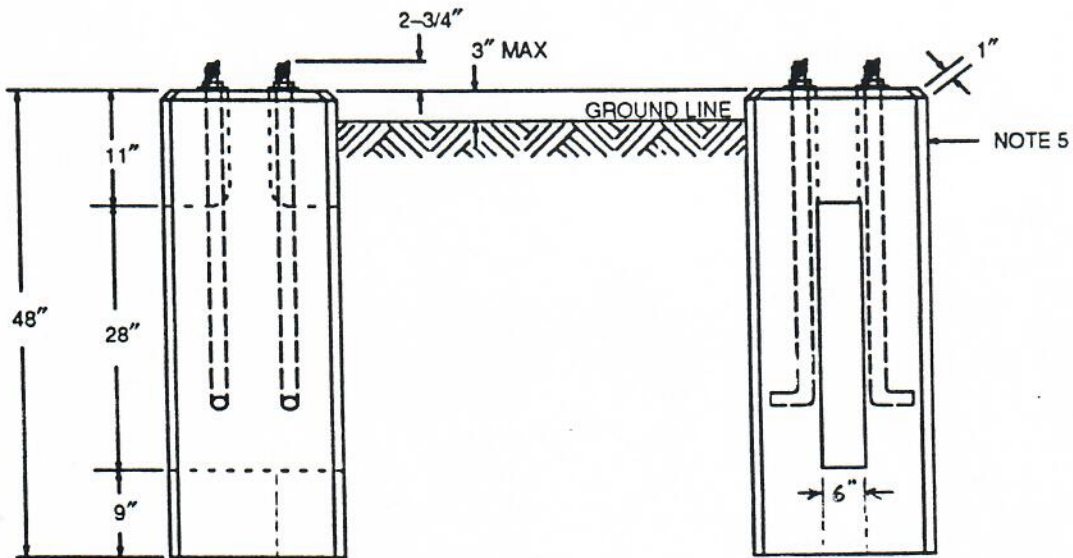
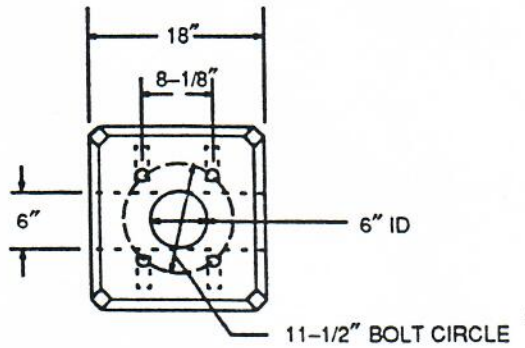




Cromwell Concrete Products, Inc.

NOTES

1. The 6" handhole at center of bolt circle projects into a 6" wide slot 28" high thru the base.
2. Final 28 day concrete strength to be 5000 psi. ~~5000 PSI~~
3. Fabricator to obtain 1" x 33" anchor bolts, SC010050 from company stock.
4. Concrete and concrete design shall be in accordance with ACI Code 318-1986.
5. Manufacturer's identification and month/year when manufactured shall be legibly marked in/on concrete within 3" of the top.



ORIGINAL	BASE - STREET LIGHT - PRECAST CONCRETE - STANDARD			
8/13/75				
APPROVED	NORTHEAST UTILITIES	MATERIAL SPECIFICATION	SPC B-159	5
8/1/91				
F. Stevens				