

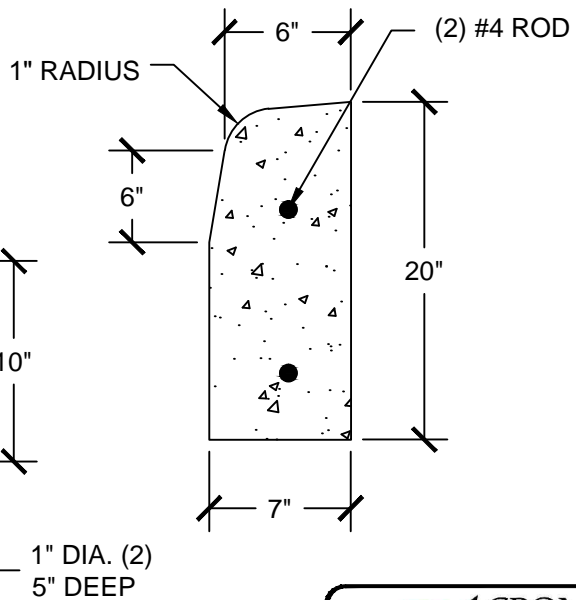
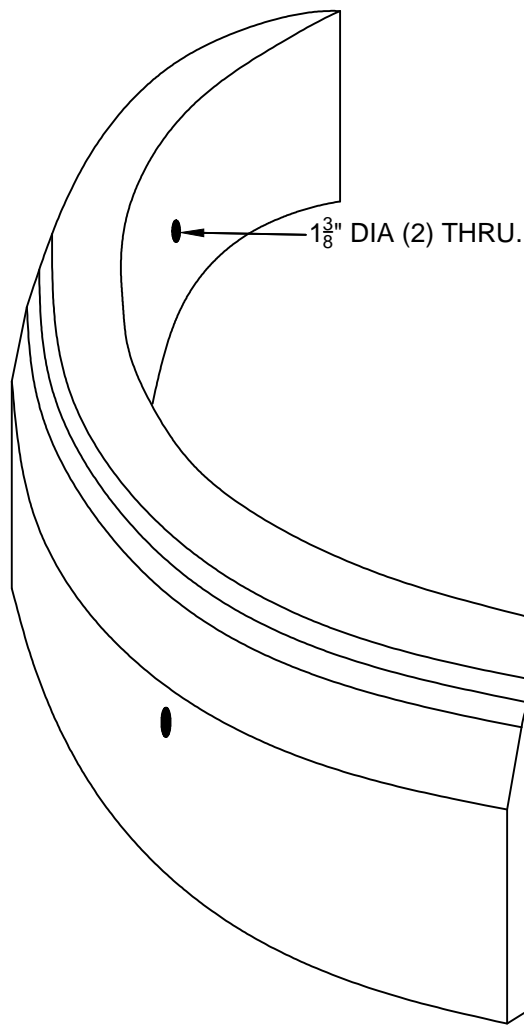
△	01/25/16	XXX	REV_DESC	MF	WHR	MW
REV	DATE	DES	REVISION DESCRIPTION	CADD	CHK	RW

D.O.T. RADIUS CURBING
1,100 LBS. EA. 94.23" PC.
140 LB P/ FT


FOR 90°

- 2FT = 1 PC. = 37.692"
- 3FT = 1 PC. = 56.538"
- 5FT = 1 PC. = 94.23"
- 10FT = 2 PC. = 94.23"
- 15FT = 3 PC. = 94.23"
- 20FT = 4 PC. = 94.23"
- 30FT = 6 PC. = 94.23"
- 25FT = 5 PC. = 94.23"

- 4FT = 1 PC. = 75.384"
- 6FT = 1 PC. = 113.07"
- 8FT = 2 PC. = 75.384"
- 12FT = 3 PC. = 75.384"
- 40FT = 8 PC. = 94.23"
- 35 FT = 7 PC. = 94.23"
- 50FT INSIDE RADIUS = 10 PC = 94.23"



CLASS "FSC" SELF-CONSOLIDATING CONCRETE
4,000 PSI



**CROMWELL
CONCRETE
PRODUCTS INC.**
667 Main Street Cromwell CT 06416
(P) 860.635.5146 (F) 860.635.7469

PROJECT

TITLE

DOT RADIUS CURBING

DESIGN	BGR	01/26/16	FILE No.
CADD	MF	01/26/16	SCALE AS SHOWN
REVIEW	MW	01/26/16	REV. 0
PROJECT No.			

DRAWING: DOT RAD CURB