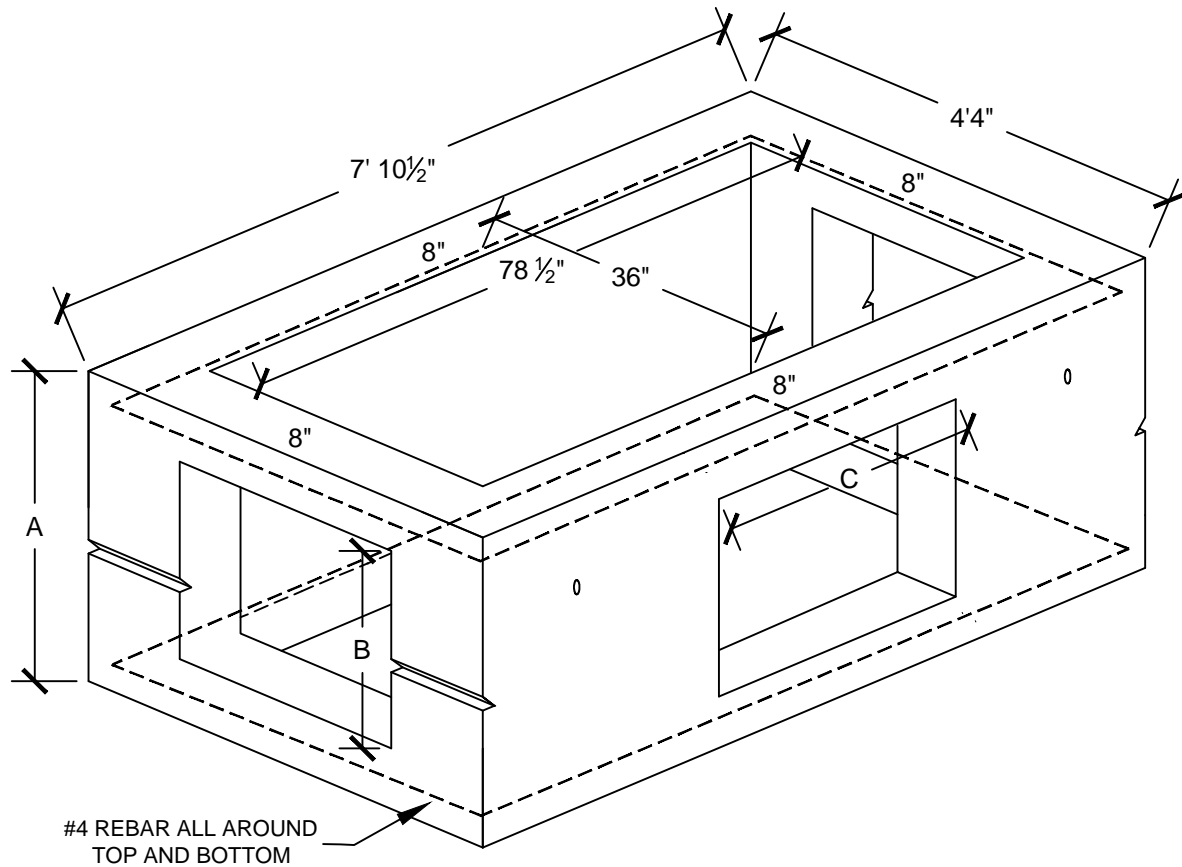


02/16/16	XXX	REV_DESC	MF	WHR	MW
REV	DATE	DES	REVISION DESCRIPTION	CADD	CHK

TYPE II RISER

KNOCK OUT TO SUIT

(24", 30", 36" & 42")




	A		B		C
12" PIPE	24"		28"		16"
15" PIPE	30"		28"		22"
18" PIPE	36"		28"		28"
24" PIPE	42"		34"		34"

(SPECIAL KNOCKOUTS FOR OVERSIZE PIPES)

SOLIDS 2176 LB/FT

CLASS "FSC" SELF-CONSOLIDATING CONCRETE
4,000 PSI

 CROMWELL CONCRETE PRODUCTS INC. 667 Main Street Cromwell CT 06416 (P) 860.635.5146 (F) 860.635.7469					
PROJECT					
TITLE					
TYPE II RISER					
DESIGN	BGR	02/16/16	FILE No.		
CADD	MF	02/16/16	SCALE	AS SHOWN	
REVIEW	MW	02/16/16	REV.	0	
PROJECT No.					
DWG: T2 RISER					