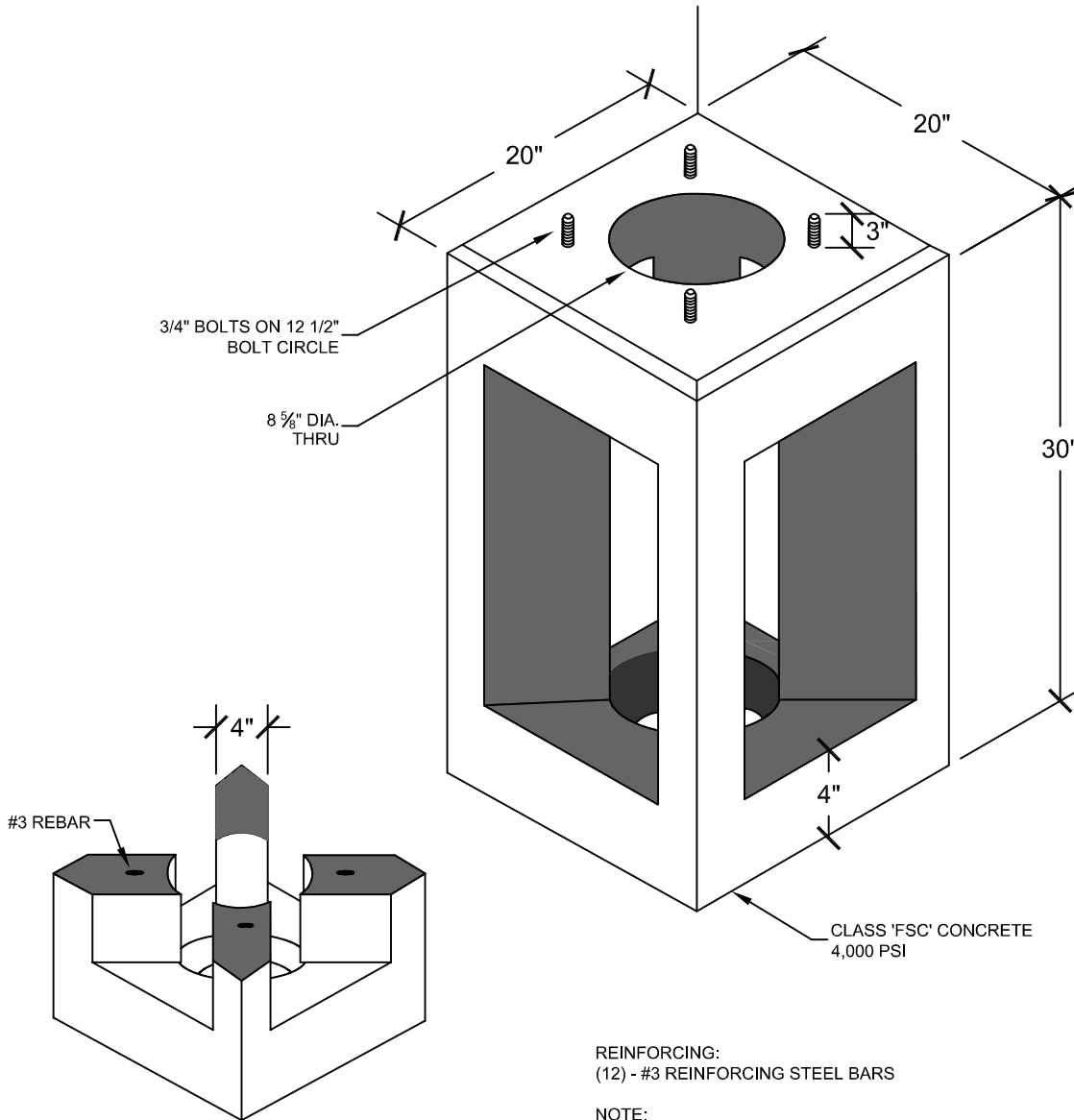


11/18/13	XXX	REV_DESC	LJH	WHR	JML
REV	DATE	DES	REVISION DESCRIPTION	CADD	CHK

PEDESTAL BASE

30" HIGH WEIGHT: 636 lbs.
 36" HIGH WEIGHT: 818 lbs.
 48" HIGH WEIGHT: 1,182 lbs.



SECTION A-A

REINFORCING:
 (12) - #3 REINFORCING STEEL BARS

NOTE:
 ANCHOR BOLTS 3/4" x 18" HOT DIPPED GALVANIZED
 FLAT WASHER AND NUTS GALVANIZED TO BE SUPPLIED WITH BASE

**CLASS "F" SELF-CONSOLIDATING CONCRETE
 4,000 PSI**



PROJECT				CLIENT NAME PROJECT INFO	
TITLE				PEDESTAL BASE	
DESIGN	BGR	2/17/2014	FILE No.		
CADD	LJH	2/17/2014	SCALE	AS SHOWN	
REVIEW			REV.	0	
PROJECT No.					
DRAWING: PED-BASE					