

Rotary Fillers

Mid to High Speed Versatile Fillers

- Expandable liquid filling system offers fast, accurate filling
 - Fast, easy changeovers
 - Exclusive "ACCU-JUST™" quick change patented nozzles



The Proven Standard ® . . . Since 1941.

KAPS-ALL
PACKAGING SYSTEMS^{INC.}

KAPS-ALL CAPPER ®

FILLS-ALL ®

FEED SYSTEMS ®

ORIENTAINER ®

200 Mill Road, Riverhead, NY 11901 USA
Tel. (631) 727-0300 • Fax. (631) 369-5939

www.kapsall.com

Mid to High Speed Versatile Rotary Fillers

FILLS-ALL® quality fillers are designed for multipurpose filling operations — from free-flowing to viscous products. Only Kaps-All Packaging Systems, Inc. offers a wide range of filling methods and techniques. Kaps-All provides you with the best filling system for your specific application. They offer accuracy, repeatability and ease of use with little or no changeover parts. State-of-the-art components offer maximum performance, reliability and versatility to keep pace with your production requirements. FILLS-ALL fillers can operate separately or can be integrated into a complete packaging system. Filling demonstrations and testing of your products are available.

FILLS-ALL FILLERS ARE IDEAL FOR THE ENTIRE SPECTRUM OF FILLING APPLICATIONS:

- Pharmaceutical • Industrial • Cosmetic • Biotech • Laboratory • Beverages • House-Hold Products
- Biomedical • Chemical • Food • Automotive • Veterinary • Paint • Toiletries and Hygienics

Top drive construction for easy maintenance

Compact, heavy-duty stainless steel frame (standard)

Stored menu settings for up to 150 recipes for quick changeovers

State-of-the-art PLC controls with optional touch screen access panel

NEMA 4 electrics for ease of washdown

Color-coded tool-less change parts

Safety switches throughout



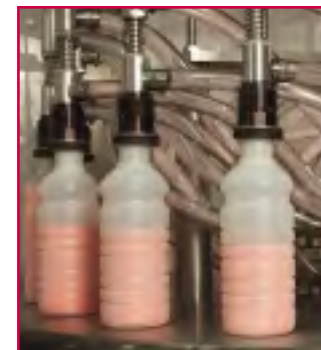
Made in USA



Ideal for mid to high-speed production



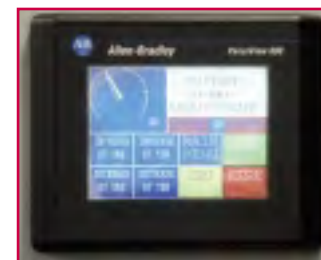
Continuous filling



Patented "ACCU-JUST™" liquid volume control



Color coded change parts



Optional touch screen controls



Standard control panel

Features:

- Several models to meet almost every production requirement (6 to 36 nozzles)
- PLC controls with optional touch screen for easy operation (Displays everything!)
- Filling capacity from vials to gallons with one machine. Handles containers of all materials
- Ultra-heavy duty stainless steel construction — 2 year guarantee. . . the longest in the industry!

- Stainless steel product contact parts
- Numerous built-in safety features — Interlocked guarding, conveyor backup sensor, safety clutches, etc.
- Software to monitor ALL filling operations with optional touch screen
- Color coded, tool-less quick changeovers
- Patented nozzle fill volume adjustment enables easy control of each nozzle for extremely accurate and repeatable fills

- Quick and easy installation — Easily integrates into your production line
- Heavy duty design manufactured for long term reliability and durability
- Maximum performance, Minimum cost
- No bottle, No fill
- Smallest footprint for high production output

Expandable filling system offers fast, accurate production

FILLS-ALL FEATURES:

Incorporates innovative, trendsetting patented Kaps-All® designs

Rotary filling system

Closed tip diving nozzles
Flush-in-place capability

Top drive construction

All stainless steel heavy duty construction with stainless steel frame and stainless steel nozzles

Easy bottle height adjustment
Fast, easy bottle changes

Unique Kaps-All design allows for future expansion from 6 stations to 36. Modular nozzles in stock in all sizes and types.
Stainless steel and Lexan safety guards with interlocking switches. Safety bottle backup with manual restart.

Patented fine tuning "ACCU-JUST™" nozzle adjustment (Optional — see inset photo)
Microprocessor controls (standard) with optional touch screen

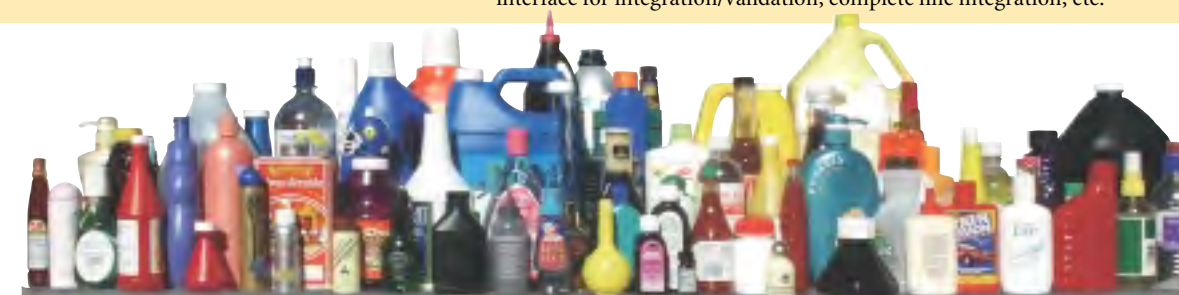
NEMA 4 electrics

Exclusive dual manifold design

Available as pressure, gravity or combination fill system
Optional Features:

BENEFITS:

- Decades of trouble-free performance
 - **2 year guarantee—the longest in the industry!**
 - Designed with over 60 years of engineering and manufacturing experience of packaging machinery . . . since 1941
 - Smooth, continuous filling
 - Outperforms more expensive rotary systems
 - No product spilling or splashing when running high fill levels
 - Fill speeds to meet your needs. . . several models available
 - Foam control, no splashing, clean fill
 - System allows for fast and easy flushing
 - Speeds productivity, saves labor, time and costs
 - Eliminates the need for disassembly
 - Stainless steel adjustable nozzle drip pan
 - Drive system is away from the wetted area and isolated from the container filling area
 - No belts— gear driven for durability and reliability
 - Longer operating life
 - Rigid power train for optimum speed and accuracy
 - Safety clutch drive
 - Protects against corrosion. Built to last. Stainless steel frame is standard with Kaps-All but optional with other manufacturers.
 - All stainless steel construction enables use in all industries
 - Reduced setup time. Handles vials to gallon containers
 - Reduced labor and operational costs
 - Calibrated repeatable settings
 - Recipes and set-up changes with touch screen option
 - Lowest possible initial cost
 - Extremely cost-effective ability to increase production rates
 - Machine is built to grow with your production requirements
 - High level of personal protection with interlocking guards
 - Drive train is protected against mechanical jams. This feature is standard with Kaps-All but optional with other manufacturers.
 - Anti-backup bottle detector will automatically pause filling when downline backup occurs
 - Each filling nozzle can be independently fine tuned to within 5/1000 inch to disperse the exact amount needed
 - Touch screen enables numerous added conveniences such as bottle counter, rate meter, digital speed, pump supply pressure, menu with recipes for quick changeovers, easy validation, closed loop controls, jog for easy setup, etc.
 - RS-232 option for linking machine and line integration
 - Wash down rated turret drive motor, control panel, sensors/switches
 - Machine can be washed down as needed
 - No air required!
 - Combined manifold eliminates overflow tanks and unwanted spills while minimizing seals, tubes and parts
 - Opens up bottom of machine for ease of cleaning
 - Tool-less sanitary clamps to easily assemble/disassemble for cleaning
 - Clean product flow path with 316 stainless steel, standard
 - Minimizes container pressurization
 - Easily adjustable pressure supply relief cut-off mechanism allows for gentle nozzle removal for difficult to handle products and bottles
 - Allows you to handle the widest possible range of products and filling speeds with one machine
- Hazardous location controls, conveyor lengths to suit your needs, special bottle handling components, special tubing for hot fills, titanium and PVC nozzles/contact parts for special products, left to right travel is standard, right to left available, monoblock with capper. RS-232 interface for integration/validation, complete line integration, etc.



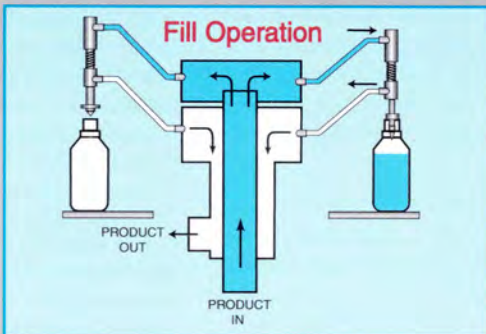
Mid to High-Speed Rotary Filling Machines

Electric and Pneumatic Requirements

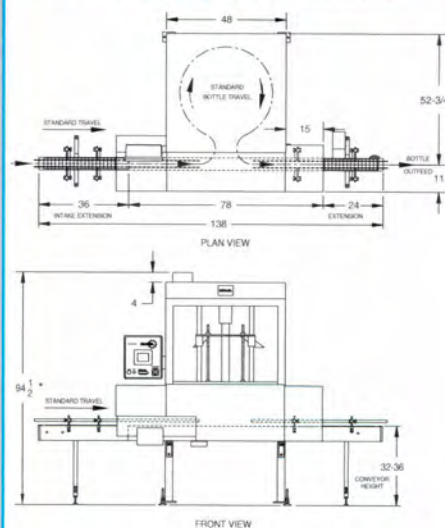
All models operate at 120 Volts (standard) or 220 Volts AC 60/50 cycles Hz (optional).

Air consumption not including pumps is Zero.

Model	Number of nozzles
FA-R -18	6 - 18
FA-R -24	8 - 24
FA-R -36	12 - 36

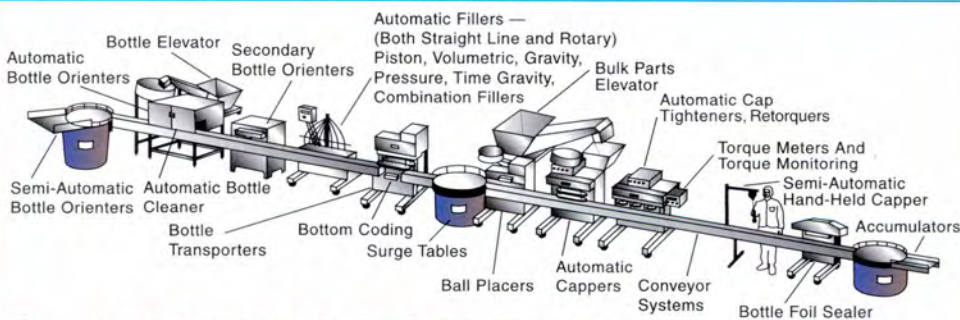


Dimensions and Specifications



*Height based on 32" high conveyor

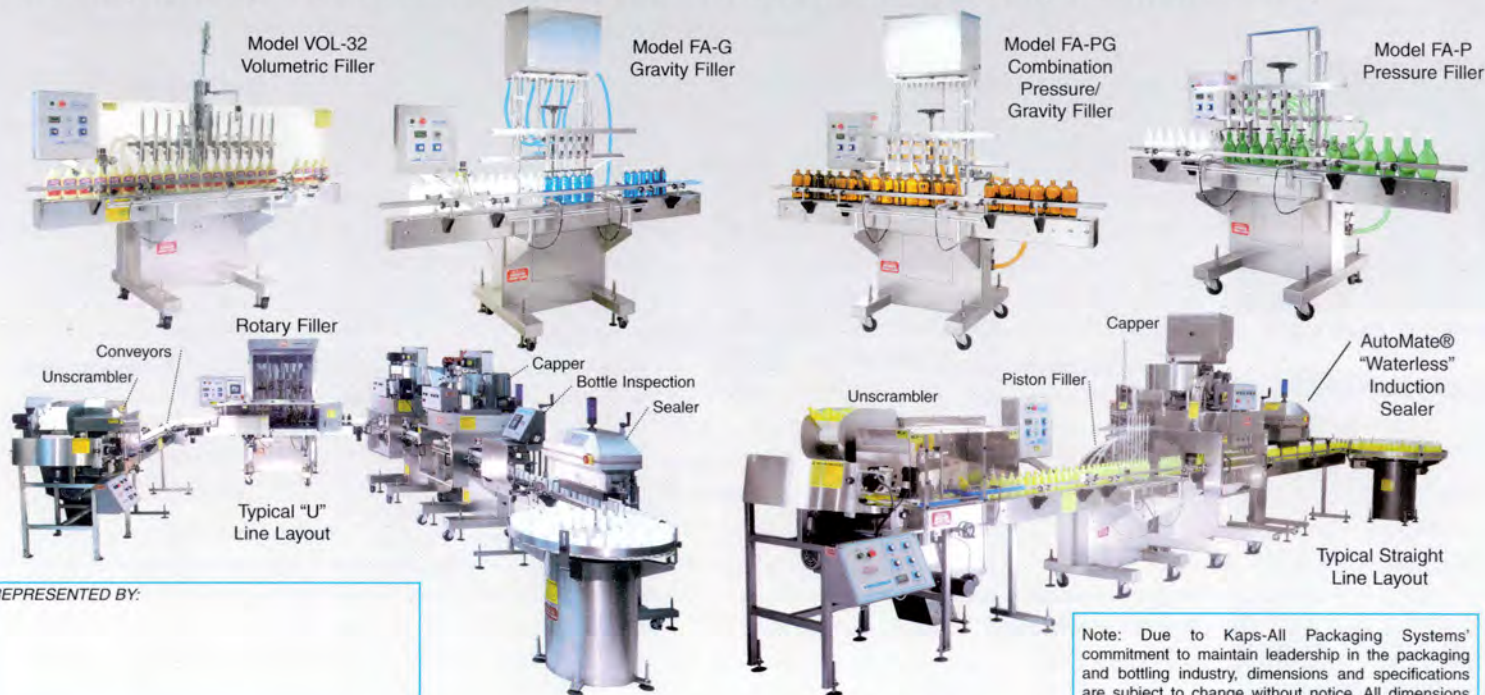
All dimensions are in inches.



"Complete Line Integration With One Source Responsibility"

Other filling machines and filling systems offered by Kaps-All Packaging Systems

Contact Kaps-All today for more detailed literature on these models and others (including semi-automatic fillers)



REPRESENTED BY:

Note: Due to Kaps-All Packaging Systems' commitment to maintain leadership in the packaging and bottling industry, dimensions and specifications are subject to change without notice. All dimensions are in inches, unless otherwise noted.

The Proven Standard® . . . Since 1941.

KAPS-ALL
PACKAGING SYSTEMS INC.
KAPS-ALL CAPPER • FILLS-ALL •
FEED SYSTEMS • ORIENTAINER



KAPS-ALL PACKAGING SYSTEMS, INC.

200 Mill Road, Riverhead, NY 11901-3125 USA

Tel (631) 727-0300 • Fax (631) 369-5939 • www.kapsall.com



DEVELOPERS AND MANUFACTURERS OF COMPLETE PACKAGING AND BOTTLING SYSTEMS

- KAPS-ALL® Bottle Cappers • Cap Tighteners • FILLS-ALL® Rotary and Straight Line Automatic and Semi-Automatic Liquid Fillers
- Bulk Loaders • FEED SYSTEMS® Rotary and Escalator Parts Feeders • ORIENTAINER® Bottle Orienters and Unscramblers
- Accumulators • CLEAN-N-VAC® Bottle Cleaners • CONVEYS-ALL® Conveyor Systems • Ball Placers • Bottle Carriers
- Heat Induction Bottle Sealers • Inspection Systems • EASY KAP® Hand Cappers • Desiccant Inserters
- Electronic Torque Metering and Monitoring • Custom Packaging Machinery •