

# Automatic Product Labeling Systems



From the Developers of the **Waterless Cap Sealer**®

## LABEL-VANTAGE®



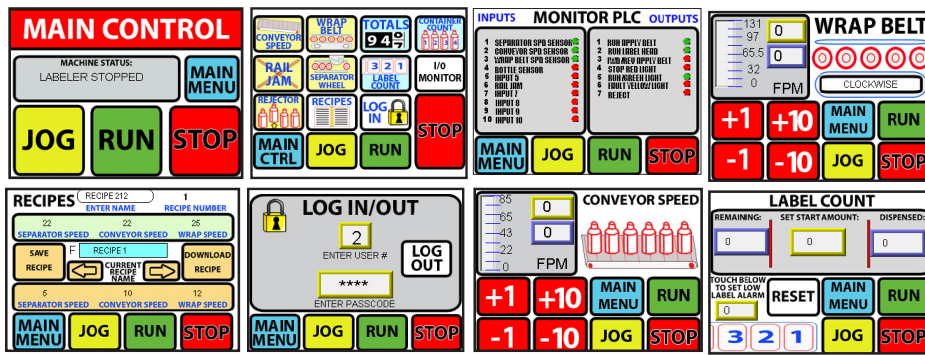
### FEATURES:

- Labeling speeds up to 80 meters/minute (up to 350bpm)
- Color TFT touch screen with 265 degree swivel support
- Fast Tool-Less Change-Overs
- European designed field proven servo driven label applicator
- Label reel diameter up to 16" and 3" label reel core
- Proprietary 5 axis applicator head
- Heavy Duty integrated stainless steel conveyor
- Heavy Duty Patented design one piece uni-frame construction
- Label detector with countdown
- Ethernet Capable
- Menu Driven Microprocessor
- Portable - Compact
- User Friendly

 **AutoMate**®  
TECHNOLOGIES LLC

Your Partner In Productivity and Automation®  
34 Hinda Blvd., Riverhead, NY 11901 USA  
Tel (631) 727-8886 • Fax (631) 369-3903  
[www.AutoMateTech.com](http://www.AutoMateTech.com)

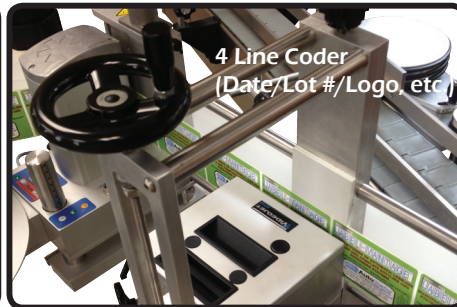
## FEATURES:



User-Friendly Touch Controls



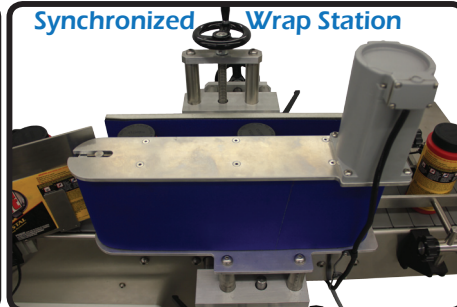
Color Touch Screen For Set-ups, Imprinting, Data Retrieval



4 Line Coder (Date/Lot #/Logo, etc)



Proven Label Applicator (LC-80 Models Shown)



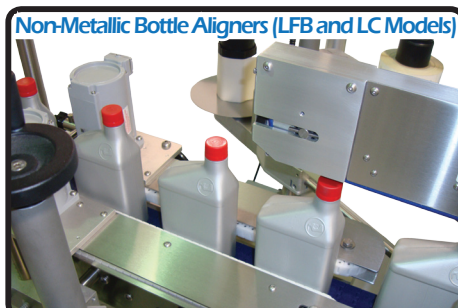
Synchronized Wrap Station



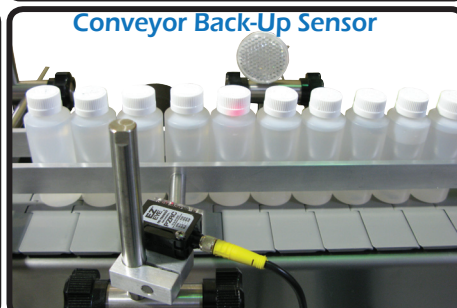
Bottle Hold Down Support (LFB and LC Models)



5-Axis Applicator Adjustment



Non-Metallic Bottle Aligners (LFB and LC Models)



Conveyor Back-Up Sensor



Synchronized Bottle Separator



Your Partner In Productivity and Automation®  
34 Hinda Blvd., Riverhead, NY 11901 USA  
Tel (631) 727-8886 • Fax (631) 369-3903  
www.AutoMateTech.com

## STANDARD LABEL-VANTAGE® FEATURES (ALL MODELS)

### Straight in-line automatic labeler for plastic, metal, fiber and glass containers.

- Up to 1 gallon containers. (up to 2 1/2 gallon as option)

### European designed proven label applicator:

- Variable speed servo drive motor.
- Standard label reel diameter up to 300mm/12" with 76mm/3" core diameter. Larger available.
- Can accept a web width of up to 6" - Larger Available.
- Labeling speed: Up to 40 meters per minute/1,500 in. per minute with independently driven reel holder. (80 meters/min available)
- Proprietary Full 5 axis adjustment of applicator head.
- Unwind unit gives constant web tension.

### Heavy Duty Design:

- Compact, one piece welded uni-frame (Patented Design) for 24 hour/7 day operation.
- Portable compact base frame with stainless steel leveling screws and floor pads.
- Oversize Stainless Steel Shafting with calibrated laser etched settings throughout.
- Stainless Steel synchronized variable speed conveyor. (Longer lengths and custom layouts available)
- 4 1/2" wide conveyor. (Left to right travel is standard)

### Controls:

- User friendly operating display for safe, accurate and easy use.
- Large color TFT touch screen control system with rotating 265 degree support.
- No label/Low label countdown with operator alerts (counts the number of labels dispensed by applicator)
- Photoelectric non-contact label and bottle detectors.
- Menu driven microprocessor control with over 250 alpha numeric recipe capacity.
- Yellow stack light fault indicator.

### Additional Features:

- Easy integration with popular coders and printers.
- All variable speed encoder monitored drives.
- Label count (Both dispensed and Remaining).
- Batch count (Both dispensed and Remaining).
- Multi-level password protection.
- Product counter.
- Products per minute rate meter.
- Elapsed hour meter
- Ethernet capable.
- Label dispensing speed adjustment.
- Integrated fully adjustable bottle separator.
- Custom applications available.
- Double location E-Stops.
- On screen input/output monitoring.
- Patented 2 axis tool-less conveyor rail adjustments.
- Numerous options available for custom applications.

### 3 MODELS FOR ALL YOUR LABELING NEEDS

#### STANDARD WRAP LABEL FEATURES: (MODELS LW-40 AND LW-80)

In addition to all the standard Label-Vantage® features, this model includes:

- Full and Partial Label Wrap on most round bottles
- Wrap station of 6" high x 14" long (others available)
- 8 ft. long stainless steel conveyor (others available)

#### STANDARD PANEL LABELER FEATURES: (MODELS LF-40, LFB-40, LF-80 AND LFB-80)

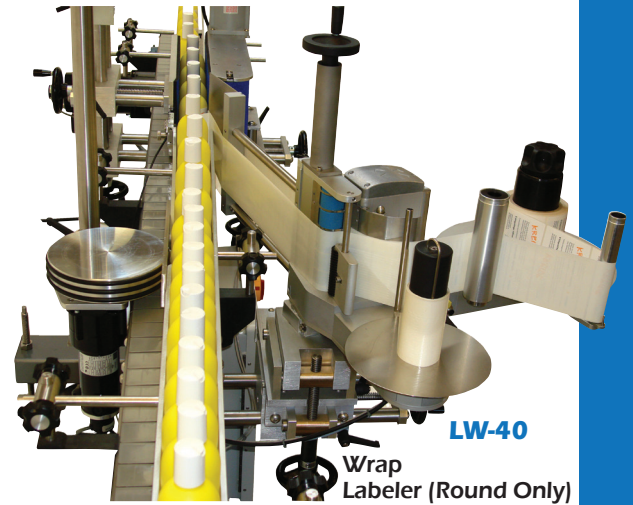
In addition to all the standard Label-Vantage® features, this model includes:

- Can label flat sided and oval bottles on one side only (LF-40 and LF-80) or both sides (LFB-40 and LFB-80) simultaneously
- Non-Metallic synchronized bottle aligners for accurate label placement
- Fully adjustable bottle hold down belt timed with conveyor to securely support bottles
- 9 ft. 8 in. long stainless steel conveyor (others available)

#### STANDARD COMBINATION WRAP AND PANEL LABELER FEATURES: (MODELS LC-40 AND LC-80)

In addition to all the standard Label-Vantage® features, this model includes:

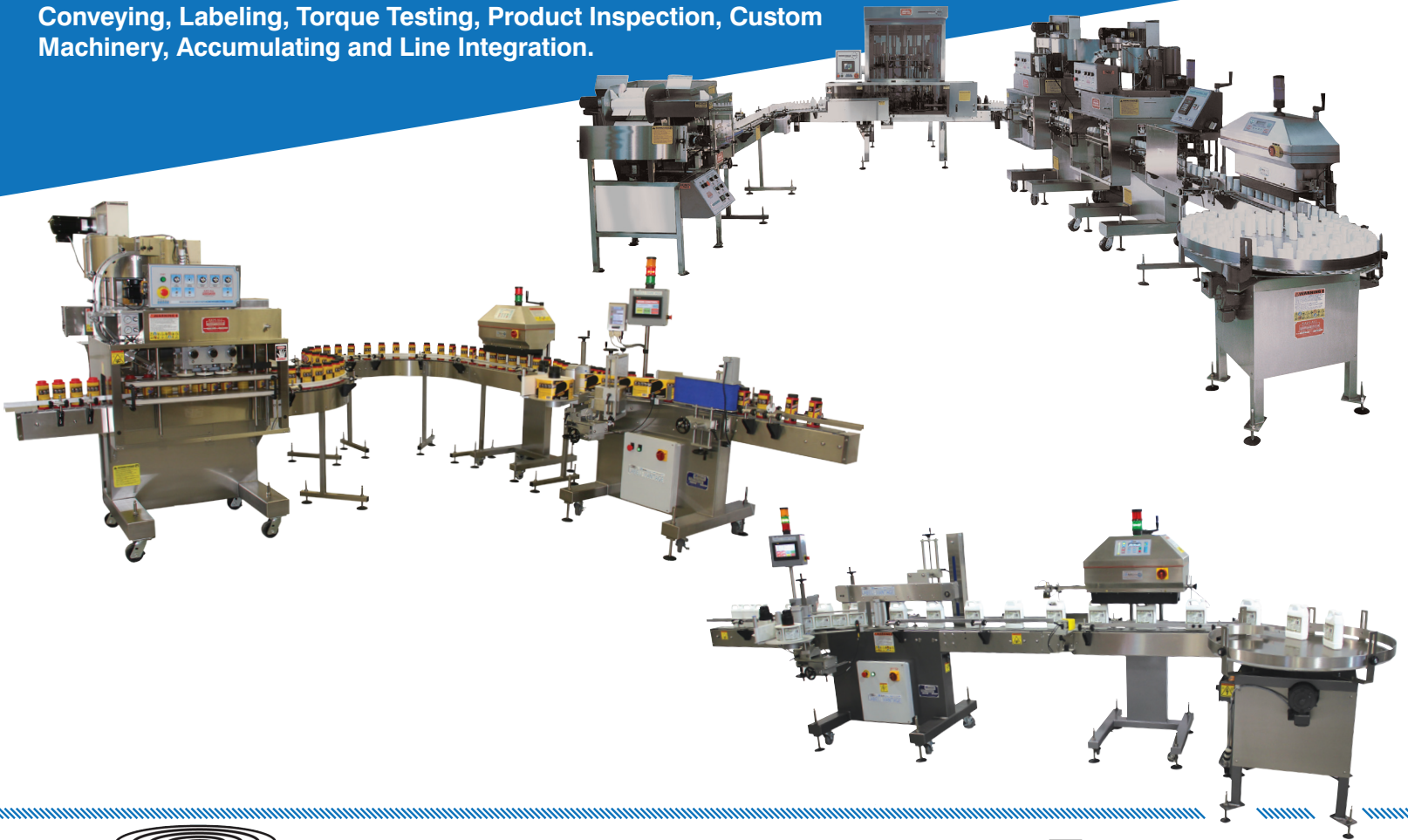
- Combination round bottle wrap labeling and flat panel labeling on the same machine with fast easy changeovers
- Non-Metallic synchronized bottle aligners for accurate label placement
- Fully adjustable bottle hold down belt timed with conveyor to securely support bottles
- 9 ft. 8 in. long stainless steel conveyor (others available)



## Options

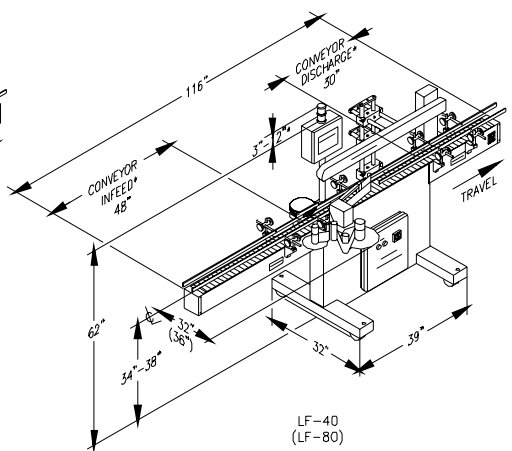
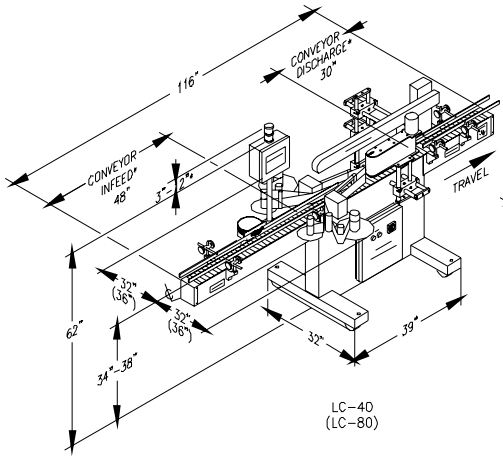
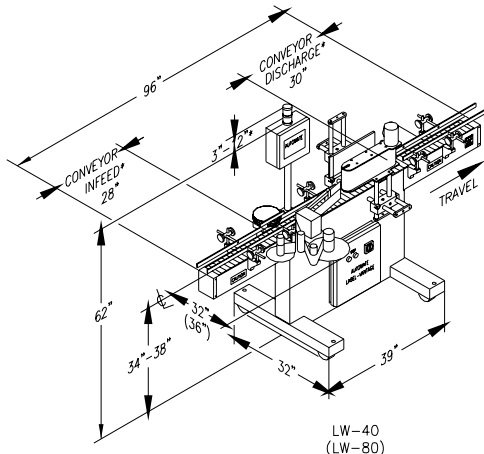
1. Thermal transfer or hot stamp imprinters are available and are easily integrated
2. Missing label detection with indicator
3. End of web/broken web detection with automatic shut off and indicator
4. 20" or longer wrap station to replace standard 14" long
5. 208-240 vac, 1ph, 50/60 HZ (NEMA 12)
6. Additional Indicator Lights (Run=Green, Stop=Red)
7. Audible fault alarms
8. Conveyor travel direction, length, and label head mounting positions available in other configurations
9. Conveyor back up sensor to shut bottle separator off when back up occurs
10. Independently powered unwinder
11. Missing Label Reject Systems
12. Complete bottling lines with integration available
13. Custom Conveyor systems to meet your exact needs
14. Screens can be displayed in other languages
15. Numerous custom enhancements tailored for your application
16. Standard labeling speed of 40 meters/min (optional 80 meters/min available)
17. 16" Label Reel to replace standard 12" reel
18. Can accommodate labels over 6" wide if needed

**AutoMate® Technologies LLC**, is your **ONE SOURCE** for High Performance, Reliable and Flexible Packaging and Bottling Machines Including: Bottle Unscrambling, Cleaning, Filling, Capping, Foil Sealing, Conveying, Labeling, Torque Testing, Product Inspection, Custom Machinery, Accumulating and Line Integration.



# LABEL-VANTAGE®

# Machine Dimensions



**SCAN FOR  
MORE INFO!**

**AutoMate®**  
TECHNOLOGIES LLC  
Your Partner In Productivity and Automation®  
34 Hinda Blvd., Riverhead, NY 11901 USA  
Tel (631) 727-8886 • Fax (631) 369-3903  
www.AutoMateTech.com

- NOTES:**
- Height is based on a 34"(0.86m) conveyor height.
  - Air consumption: None, unless rejection or special option is added such as a coder.
  - Electric: 110-125V, 1PH, 50/60Hz (Standard) or 208-240V, 1PH, 50/60 Hz. (NEMA 12)
  - Due to AutoMate's commitment to maintain quality leadership in the packaging industry, dimensions, specifications and options are subject to change without notice.
  - Some items shown are optional. Refer to price quote for details.
  - Custom Conveyor Lengths available to suit your needs.
  - Add Approx. 3" per light unit. up to 4 units available.