



Automatic/Semi-Automatic Portable and Hands-Free Induction Foil Sealers

Smart-Seal® Waterless Cap Sealers And Bottle Inspection Systems

Full-featured, Field-Proven Waterless Cap Sealers Developed
For Demanding Production Lines With On-Line Monitoring Systems



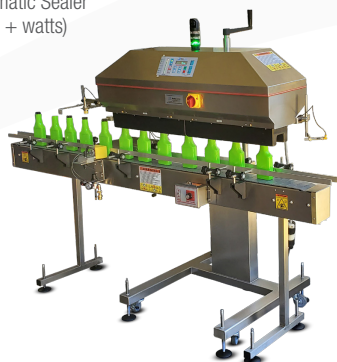
- Ultra-High Speed Automatic Sealer
Model AM-250 (2,500 + watts)



- Automatic Diagnostic
and Inspection System
Model AM-DA



- Semi-Automatic Sealer
Models AM-75 & AM-100
(750 watts & 1,000 watts)



- Ultra-High Speed Automatic Sealer
Model AM-500 (5,000+ watts)



SMART SEAL... Touch®

- Low to High Speed Automatic Sealer
Model AM-275 (2,750+ watts)

Two Locations To Better Serve You:

- 34 Hinda Boulevard, Riverhead, New York, 11901-4804 USA
 - 251 North Congress Avenue, Delray Beach, Florida, 33445
- Tel +1 (631) 727-8886 | Fax +1 (631) 369-3903



www.automatetech.com

Features

- Self-contained easy to use - no tools...plug-in, set power level and seal
- All digital state-of-the-art designs assure accuracy and repeatability
- Eliminates antiquated analog controls
- Over 9 patents to assure consistent productivity
- No moving parts, noise free, 100% solid state surface-mount electronics for long-life and dependability
- Stainless steel cabinetry and maintenance free construction
- Seals containers of all shapes and sizes
- INSPECTS AND REJECTS DEFECTS® for quality assurance
- In stock for Fast Delivery

Automatic Induction Foil Sealers

Auto-Mate®’s Proven SMART SEAL® Cap Sealers. Accommodates All Your Sealing Needs While Outperforming All Others – From the Originator of the “Waterless Cap Sealer®”

“Waterless” — NO WATER COOLING REQUIRED — Eliminates radiators, pumps, fan belts, water tubing, water corrosion, spills.

Compact Stainless Steel Portable Design — Ideal for all industries including: pharmaceutical, food, chemicals, beverages, cosmetics, pet products, bio-tech, etc.

Ultra-Compact — Minimal space requirements. The smallest most powerful CAP SEALERS in the industry.

Wattage — Verify wattage of any sealer you are looking at to confirm you are getting to performance. Auto-Mate®’s Smart Sealers are all built with maximum available wattage/head power. This allows for more consistent seals even for harder to seal big and small caps and faster conveyor speeds.

High Efficiency — Exclusive design puts the power into sealing, not into wasted heat requiring extensive cooling. Lower wattage required for most applications. Built in power save mode minimizes energy consumption based on line speed and production use.

User Friendly — **A)** An all digital control panel allows operator to easily set-up and operate sealer for quick changeovers. Exclusive features such as menus, recipes, sensors and indicator lights allow for quick set-ups. No moving parts. No tools required. Remote controls available. Capable of handling most containers and caps on one machine. **B)** Smart-Seal® Touch™ has numerous additional features such as password protection, extensive fault history, remote trouble shooting and factory on-line repair and reset, etc.

- 01 Displays Lot, Batch and Total Bottles sealed
- 02 Time and Date Retained For Printout
- 03 User Friendly Menus and Recipes Stored
- 04 Stalled Bottle Detector (Patented)
- 05 Missing Foil/Seal Detection (And Rejection)
- 06 Multi-Language Capability English, French, Spanish
- 07 Loose and or High/Crooked Cap Detection (and Rejection)
- 08 Consecutive and Excessive Fault Detection
- 09 Exclusive, Tool-less, Rejection System
- 10 Self-monitoring Conveyor Speed Detection and Alarm System
- 11 Computer interface with Statistics for Printout / Laptop Download via USB.
- 12 On-Screen Statistic for Operator Viewing
- 13 Ultra Sensitive Foil Temperature Monitoring (Patented)
- 14 High and Low Temperature Limits For Bottle Rejection
- 15 USB-Ethernet Printer/Computer Connection For Easy Documentation
- 16 IQ-OQ Validation Package for all models
- 17 Password protection

Complete Line Integration — Accomplished with a built-in microcomputer at no extra cost. This allows interfacing with other in-line equipment. AutoMate offers remote control, USB Terminal and ethernet interfaces, statistical analysis retrieval, missing foil detection and rejection, skewed cap, loose cap. missing cap and stalled bottle detection, etc.

Competitive Pricing — The AutoMate sealers are priced to be well within every-one’s budget. They are the most competitively priced, built to last sealers with more standard and advanced features than any other sealer available. AutoMate uses stainless steel where others use aluminum and/or plastic.

Unsurpassed Performance — Leading-edge technology and designs minimize power consumption. Over 40 years of extensive Research and Development has led to AutoMote’s exclusive patented designs and features, setting AutoMate apart from other “Waterless’ sealer imitations, Our Sealer Technology is protected by over 9 patents surpassing other similar machines In reliability and performance, making your production line more efficient.

Versatile — Accomodates all container materials including: PE, PP, PET, PS, PVC, Metal and Glass. Seals all cap materials, including plastic and metal.

IQ-OQ — Professionally prepared validation and installation/operation documentation assistance available to suit your exact needs. (See page 5).

Hi-Tech Microprocessor — State of the art components controls and compensates sealing power—detects low power conditions/brownouts—automatically adjusts for varying loads to maintain correct sealing power. Indicator LEDs display setup and machine status. Over 23 possible faults are displayed on LED and HMI touch screen control display.

Maximum Power Output — Beware of inexpensive sealers that offer 2KW of power or less. The Model AM-250, Model AM-275 and Model AM-500 offer more output power than any other Cap Sealer available today. Maximum power output enables the user versatility for difficult applications and the ability to meet future production requirements.

Self Calibration — All sealing machines containing electronics need to be calibrated. Only AutoMate Sealers have a built-in “STANDARD” calibration feature to verify that the sealer is performing to its maximum requirements and accuracy based on YOUR line voltage. This is an exclusive feature available only with Smart-Seal® Sealers.

- 18 Exclusive “LED” Pulse Monitoring System (Patented) allows for instant on screen performance verification
- 19 Load Sensitive Operator Assist “LED” Bar Graph (Patented)
- 20 Energy Saving Mode Minimizing Power Consumption
- 21 On-Screen Displays Bottle Counter and Rate Meter
- 22 Tool-less Plug-In Electronic Manifold For Future Expansion & Service
- 23 Sealed Electronics Insures Protection for Demanding Environments
- 24 Models Available From 2500 W To 5000 W For All Applications
- 25 Real Time Temperature Display (In Both °F and °C) Assures Quality for each and every seal
- 26 A True Waterless Electronic System
- 27 Top Quality Advanced Surface Mounted Electronics For Reliability
- 28 State-Of-The-Art IGBTs For Increased Efficiency
- 29 Easy Viewing Indicator Lights and Alarm Stack
- 30 Front Panel Status Indicators for quick in-time diagnostics
- 31 Interlocking Safety Switches. Guarding And Lockouts
- 32 Batch Preset - Advises When Run Is Complete
- 33 Remote Control available
- 34 Specific Line Voltage Self Calibration Electronics built in at no extra cost
- 35 Etc, etc

AutoMate Exclusive SMART-SEAL® Features

Automatic Advanced Induction Foil Cap Sealers and Inspection System:

Several patented sealing heads can accommodate all applications up to 120mm inside diameter cap sizes

One piece heavy duty welded portable frame on casters is standard

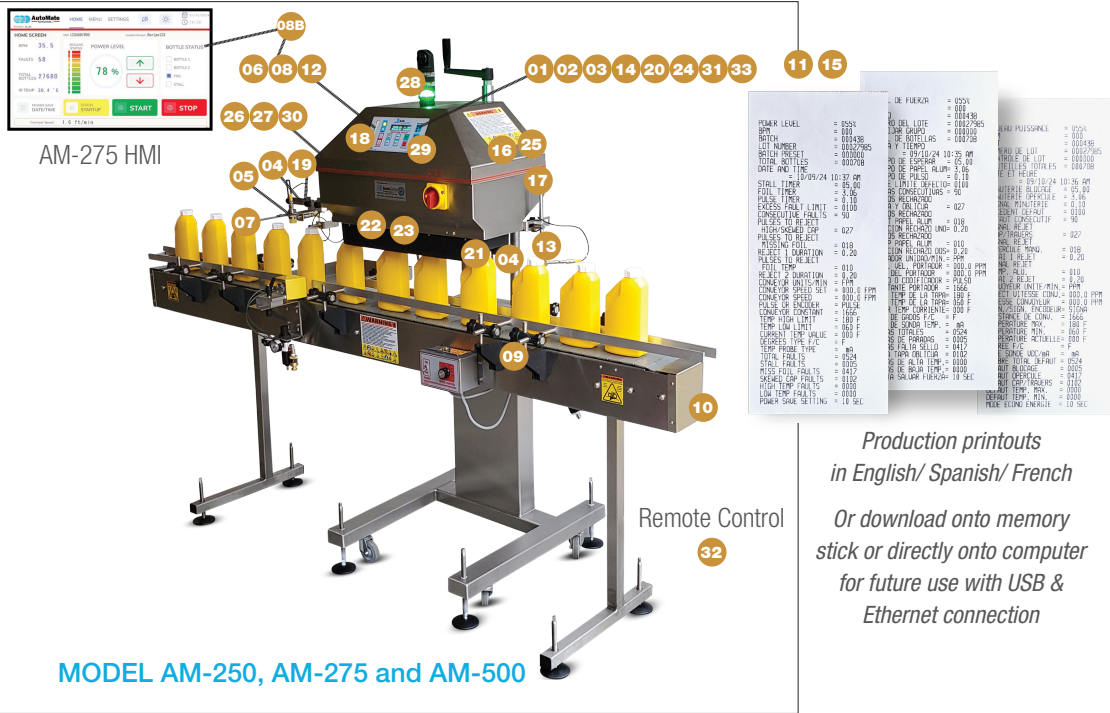
Stainless steel levelling screws with floor pads (Standard)

Stainless Steel variable speed conveyors for all applications (Optional)

Only AutoMate Sealers have a standard built-in Calibration Function

Compact patented design allows sealer to be placed easily into tight existing lines

Adjustable head height from vials to gallons



AutoMate's New Display Option SMART-SEAL® Touch™ Cap Sealer. Model AM-275

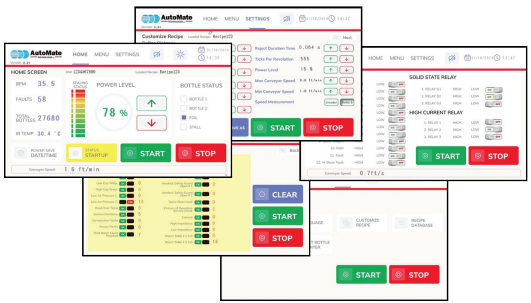
Accommodates All Your Sealing Needs While Out-performing All Others - From the Originator of the "WATERLESS CAP SEALER®" and Smart-Seal Inspection System.

Graphic HMI 4" Full Color Display With User-Friendly, Easy to Operate Controls. Includes numerous SCREENS to easily aid the operator in setup, operation and maintenance of the AutoMate induction sealer.

- AUTO-MATE SEALER Model AM-275
- Reference Lot Number
- Batch Preset: Count
- Total Bottles: Run
- Date and Time
- Select Recipes
- English, Spanish, French, Etc
- Stall Timer: Setting
- Fault Reject Setup
- Reject 1 Duration
- Display Statistics
- Password Protected

Exclusive SMART-SEAL® load sensitive operator assist bar graph for easy operator set up. This unique graph meter, which operates separately from the programmed sealer, helps provide the best seal possible by indicating to the operator how much power is being used, and how much is needed depending on the cap seal and conveyor speed used.

Exclusive SMART-SEAL® load sensitive operator assist LED bar graph for easy operator set up. This unique graph meter, which operates separately from the programmed seater, helps provide the best seal possible by indicating to the operator how much power is being used, and how much is needed depending on the cap seal and conveyor speed used.



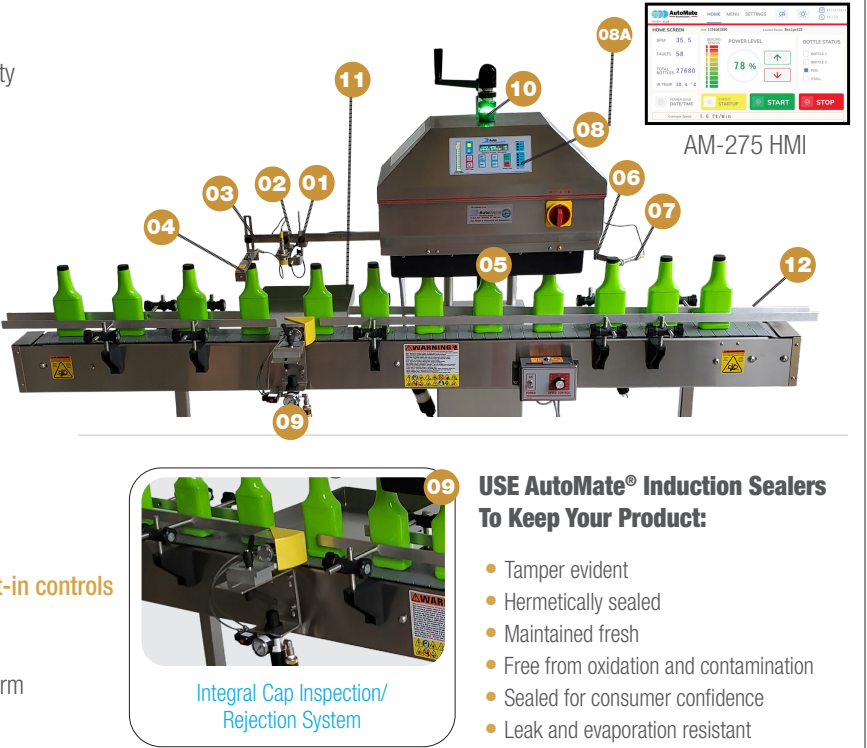
- Select Shift Register/Encoder
- Conveyor Speed Set: FPM/MPM
- High Temp Fault
- Current Temp Value: 1
- Power Save Setting
- Skewed Cap Faults
- Degrees Type °F or °C
- Temp Low Limit: 1
- Missing Foil Faults

- Power Level BPM Display
- Excess Fault Limit
- Consecutive Faults
- Reject 2 Duration
- Low Temp Faults
- Temp High Limit
- Stall Faults
- Total Faults
- Temp Probe Type
- Built in on Screen
- Calibration Set Up
- Proprietary Sealing Status
- Easy Operation Diagnostics
- Conveyor Speed Alarm
- Integral Trouble Shooting (Both on Screen & Remotely)

Integral Cap Inspection/Rejection System For Increased Quality Control! Only AutoMate "Detects and Rejects Defects®"

Inspection System Checks For:

- 00 Rugged SS Gasketed Enclosure for ultimate longevity
- 01 Cap presence or absence
- 02 Foil Presence
- 03 Loose Caps
- 04 Crooked Caps
- 05 Stalled Bottle/Cap under sealing head
- 06 Low foil seal temperature (Patent pending)
- 07 High foil seal temperature (Patent pending)
- 08 Microprocessor displays and prints statistics of inspection data and faults
- 08A 4" Full Color HMI Fast Reacting Touch Screen
- 09 Fully AutoMated gentle rejection system with built-in controls
- 10 Fault/Reject status with light/alarm
- 11 Reject Verification and Full Reject Tray Verification/Alarm
- 12 Conveyor Speed Alarm

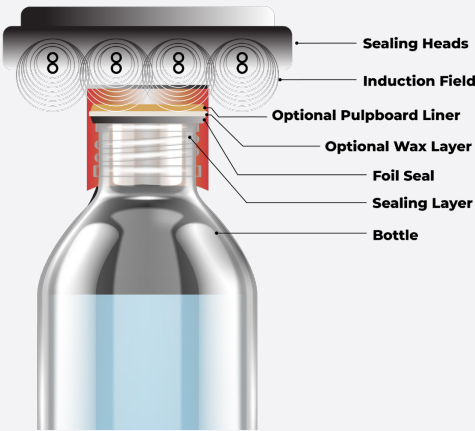


USE AutoMate® Induction Sealers To Keep Your Product:

- Tamper evident
- Hermetically sealed
- Maintained fresh
- Free from oxidation and contamination
- Sealed for consumer confidence
- Leak and evaporation resistant

How the Smart-Seal® Works

Utilizing the caps pressure on the liner under the cap, the AutoMate Sealers heat the foil seal and sealing layer utilizing an electro-magnetic field through the cap. This method will heat the foil seal and also melt the optional wax layer and allow the polymer film and foil seal to be fused to the container. This will give a tamper evident, hermetic seal when the cap is removed. This process is extremely efficient and fast. The electromagnetic field produces no heat itself and therefore does not interfere with the product. Sealing rates using this process can be in excess of 40+ bottles per minute for the Semi-Automatic Sealers and up to 500+ bottles per minute for the Automatic Sealers.



IQ-OQ Documentation



Professionally prepared IQ/OQ (Installation/ Operation Qualification) protocols presented in a detailed format suitable for all bottlers seeking easy, quick, professional validation and documentation of their cap induction sealer. (Available for all models)

Evolution of Waterless Cap Sealer



Semi-Automatic, Hands-Free Waterless Cap Sealer

SMART-SEAL® Microprocessor Controlled Model AM-75

- 01** Available as either a 750 Watt or 1000 Watt model
- 02** Lightweight, compact, quiet, portable, completely self-contained
- 03** Input power supply (105-125V, 1PH or 200-240V, 1PH)
- 04** Lockout main safety power switch
- 05** Skid-free non-marring feet to safely operate on any work surface
- 06** Visual and audible alarm for missing foil
- 07** Stainless steel sealed and gasketed enclosure
- 08** Interlocking safety switches
- 09** LED display screen with touch buttons for ease of use



MODEL AM-75 (Shown)

- 10** Photo electric start switch-eliminates manual finger switch
- 11** Stainless steel "V" centering guide to positively position bottle
- 12** Patented tool-less sealing head height adjustment eliminates need to hold sealing head preventing operator fatigue
- 13** Proprietary cap sealing head-one head accommodates 5mm to 100mm cap size. Labeler Head Available for up to 120mm Cap Diameter
- 14** Missing Foil detector



Model AM-75 and AM-100- Check These Standard and Exclusive Hand Sealer Features:

- Easy to use soft touch key pad with display screen shows: **(Model AM-75)**
 - Power level displayed in percentage of full scale
 - Sealing time in 0.1 second increments
 - Batch count and batch preset alarms
 - Displays the total number of bottles sealed
 - Operator programmed recipes and menus allow quick/easy adjustments between applications
 - Screens displayed in 3 languages: (English-Spanish-French)
 - Standard Missing Foil Detector with audible and visual alarms (can be operator activated and deactivated)
 - Touch button calibration mode to set the sealer accurately to your exact line voltage
 - Sealer can operate on either 125V, 1 Phase or 200-240 V, 1 Phase (Factory set)
 - Has integrated interlocking guards for safety with automatic shut-off

- Main power safety switch with lock-out disconnect
- All stainless steel heavy duty construction cabinetry (not plastic as seen elsewhere)
- Compact size for easy portability
- One specially designed proprietary sealing head accommodates 5mm up to 100mm caps (no need to purchase extra sealing heads), No sealing head
- Guides or Cores to Buy
- Sealed and gasketed enclosure to protect solid state electronics from outside environment (such as dust and humidity)
- LED display screen with touch buttons for easy use (no old style thumb wheels, toggle switches or dials)
- Visual and audible signals tell when bottle is done sealing. Time counts down in 0.1 second increments on digital display
- Available as 750 watt and 1000 watt models to suit your requirements

Additional Features of both models (AM-75 & AM-100):

- Patented stainless steel tool-less sealing head height adjustment with incremental scale for accurate set-up and repeatability. Eliminates the need to hold the sealing head. Sealing head is automatically supported parallel to the cap seal to provide the optimum seal and eliminate operator error
- Automatic photoelectric switch under sealing head eliminates the need for finger switches and foot pedals to start sealing cycle
- Stainless steel "V" stop centering guide for positive bottle placement under sealing head
- Advanced state of the art microprocessor controlled circuitry delivers high efficiency sealing power and long term reliability-Hands free design ensures accurate fast, reliable sealing and eliminates operator fatigue
- Sealing heads available for up to 120mm ID Cap Sizes

New High Power Automatic Waterless Induction Foil Cap Sealer Model AM-500 & AM-550 Smart Seal®...Touch™

The Model AM-500 offers twice the power of the Model AM-250. This allows for very high conveyor speeds and extra demanding cap sealing requirements. The Model AM-500 features the same numerous specifications as the Model AM-250, but with over 5000 Watts of available sealing power.

This is the most powerful “WATERLESS CAP SEALER®” on the market today. Check the Model AM-250 which has the same features and details for more information.



Model AM-500 & AM-550 Smart-Seal®...Touch™
Shown with optional conveyor. (5000+watts & 5500 watts)

Portable Field Strength Meter Model AM-CSM

Easy to operate SMART-SEAL® Portable Field Strength Meter ensures superior quality assurance and repeatability of your product before shipping

The field strength of the induction sealer can accurately be measured with our exclusive SMART-SEAL® Meter. This state of the art electronic Meter assist in verifying that the sealer is producing the same repeatable sealing field every time, assuring a consistent power output No matter if there are small differences in setup from operator to operator. The Model AM-CSM Meter* also provides analytical sealing data to further assist in validation, documentation and quality assurance of your sealers performance. This Meter will work with all makes and models of induction bottle cap sealers. It is fully calibratable for added quality assurance and reliability.

Ask for a quote and additional information



In Stock for 24 hour shipments

Detecs and Rejects Defects® Dignostic Inspection Center Providing Product Quality Assurance, Accuracy and Integrity

The Diagnostic Monitoring Center comes standard with portable heavy duty stainless steel base to straddle a conveyor requiring minimal floor space (Model AM-DA)

DIAGNOSTIC MONITORING FUNCTIONS AVAILABLE:



MISSING CAP DETECTOR
Detects the presence or absence of a cap automatically.



OPEN CARTON FLAPS
Automatically verifies that carton flaps are in place.



HIGH/CROOKED/LOOSE CAP DETECTOR
Detects cross-threaded or crooked caps. Also, detects if a cap or dispenser top is not screwed down.



STALLED BOTTLE DETECTOR
Internal software with external sensor, detects backup of containers downstream.



MISSING FOIL LINER DETECTOR
Detects the presence or absence of an induction foil liner from the cap/container.



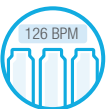
DEFECT COUNTERS
Monitors the type and quantity of each fault detected to aid in determining the location andd correction of the problem.



BOTTLE COUNTER
Automatically counts and displays the number of containers as they pass.



CUSTOM VERIFICATIONS AND DESIGNS
Setups to suit your specific requirements. Custom software can be written for your needs. Call for details.



BOTTLE RATE METER
Automatically tracks the containers as they pass and displays real-time production rates.



COTTON PLACEMENT
Detects missing cotton or high cotton placement which might interfere with proper capping.



BAR CODE VERIFICATION
Detects missing or incorrect bar codes for the product being packaged.



MISSING LABEL DETECTOR
Automatically detects the presence or absence of labels.



COLOR VERIFICATION
Automatically detects if the cap, label, container, etc. Is the correct color for the product being packaged.



MISSING NECK BAND DETECTOR
Automatically verifies the presence or absence of neck bands.

Available Formats

The Auto-Mate® Diagnostic Monitoring Center can be configured to any of the following formats:

- Provide a signal to an AutoMate rejector, to reject the faulty container off your line.
- Provide a signal to the customer provided rejector, to reject the faulty container.
- Alert the operator that a faulty container has passed and/or has been rejected.
- Provide an output signal for customers further use. All faults are tabulated/analyzed for further operator use and line functionality improvement.
- Custom software can be written for your exact requirements.

The Model AM-DP Can Roll Up Over An Existing Conveyor or a New Stainless Steel Conveyor Built to Your Specifications.

Automatically “Detects and Rejects Defects®”

AutoMate’s Diagnostic and Inspection Monitoring Center provides product quality assurance, accuracy and integrity. Quality control is accomplished through user friendly, non-contact, non-destructive testing. Our exclusive reject system allows defects to be automatically rejected. Quick changeovers are easily accomplished by simple knob adjustments with calibrated scales for accurate, repeatable performance.

Shown with Optional Conveyor



AutoMate Technologies LLC

Is your ONE SOURCE for High Performance, Reliable and Flexible Packaging and Bottling Machines including: Bottle Unscrambling, Filling, Capping, Sealing, Conveying, etc.

Model AM-D Dimensions

Dimensions for AM-75 Induction Foil Hands-Free Sealer

Dimensions for AM-275 Automatic Induction Foil SMART-SEAL® ...Touch™ Cap Sealer

Dimensions for AM-250 and AM-500 Automatic Induction Foil SMART-SEAL® Cap Sealer

Note: Bottom dimension notes Model AM-500

Complete Bottling Systems Available

One model handles various cap styles, cap materials and speeds. One model will do it all. Custom Sealing solutions available for difficult applications.

Up to 70mm caps

Specialty caps

Up to 100mm caps

Up to 120mm caps

Flat head up to 120mm caps

NOTES:
1- AutoMate Technologies, LLC is striving for continued leadership in the packaging industry. Therefore, dimensions and specifications are subject to change without notice.
2- *This dimension based on 34 in. (86.4cm) high conveyor and 6 in. (15.2cm) tall container. Overall height does not include optional status light.
3- Dimensions shown are in inches. [] Indicates centimeters.



AutoMate Technologies LLC, is your ONE SOURCE for High Performance, Reliable and Flexible Packaging and Bottling Machines including: Bottle Unscrambling, Filling, Capping, Labeling, Inspection, Sealing, Conveying and Custom Machines.

Two Location To Better Serve You:



- **Auto-Mate Technologies LLC**
34 Hinda Boulevard
Riverhead, New York, 11901

Tel +1 (631) 727-8886

Fax +1 (631) 369-3903



- **Auto-Mate Packaging Systems, Inc**
251 North Congress Avenue.
Delray Beach, Florida, 33445

Tel +1 (631) 727-8886

Fax +1 (631) 369-3903

The Proven Standard @ . . . Since 1941.
KAPS-ALL
_PACKAGING SYSTEMS INC.

Unscramblers, Fillers, cappers,
feeders, Torque Monitoring,
and much more.

kapsall.com

**LABEL-VANTAGE™**



For all labeling needs
automatetech.com

www.automatetech.com

©Copyright 2024-2025, Auto-Mate Technologies, LLC. • US and Foreign Patents, Others Pending

