



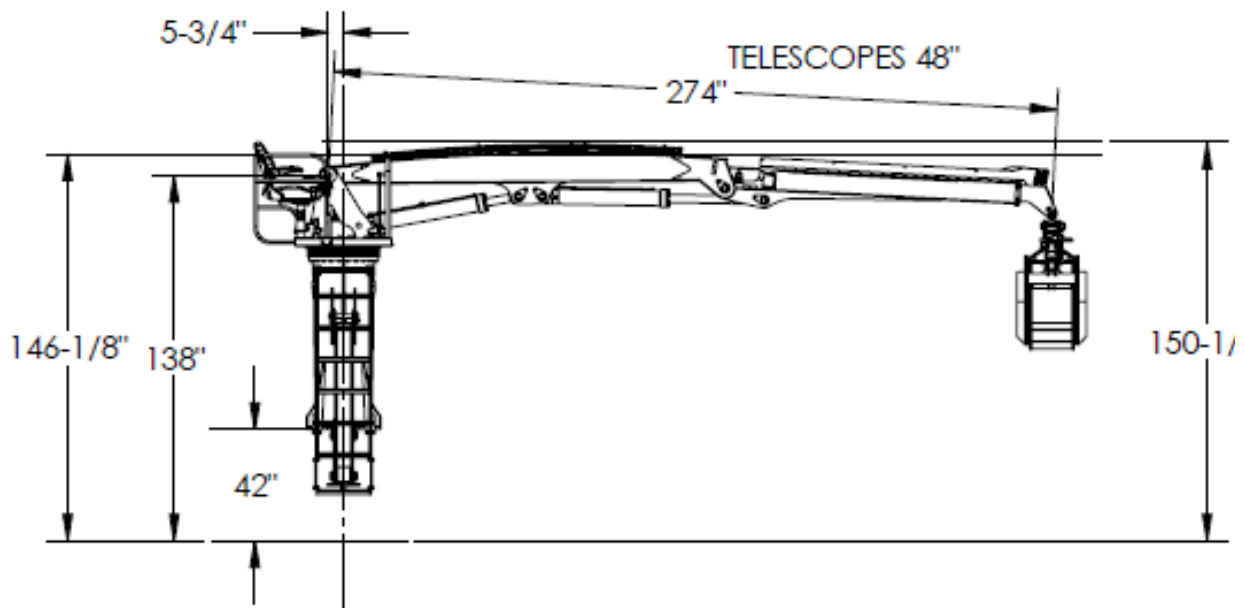
The Builtrite™, Talon 88, Heavy Duty, Truck Mounted Material Handler (Back of Cab and Tail Mounts) offers state of the art features for optimum performance, comfort and safety. Key features include:

**Increased Lift Capacity**

Please see lift capacity charts on page 3. Overall, the lift capacity has increased significantly from the previous model, especially the jib boom performance.

**Main Boom and Jib Boom Design**

- 1) Fabricated Main Boom and Jib boom, made from high tensile steel.
- 2) Boom Length - Two options: 22'10" Straight boom or 22'10" with 48" telescopic boom extension (26'10" total reach).
- 3) To keep hoses from looping out and being exposed when the jib is retracted, a unique, slide tray was incorporated to keep the hoses in alignment at the end of the jib, keeping the hoses from harm's way.
- 4) Two high powered, LED lights mounted to each side of upper jib boom. Additional light mounted on inside of operator guard.
- 5) Aluminum bronze bushings on all pivot points.





### **Hydraulic System**

- 1] Pilot operated, pressure compensated load sense controls using a single, variable piston pump operating at 3,250 PSI. This operating system is 20% faster and more energy efficient than traditional gear pump systems. Requires 2000 RPM @ Pump for maximum performance and efficiency.
- 2] Ergonomic joystick controls to alleviate fatigue.
- 3] Highly efficient, pressure compensated sections in main control valve.
- 4] 60 gallon hydraulic tank (Remote mounted) with easily serviceable, high capacity, in tank return filter.
- 5] High capacity, 12 Volt oil cooler with bypass.
- 6] Hydraulic / Electric collector features 4 hydraulic passes and 23 electrical passes for operating a variety of attachments, magnets, additional lighting, etc. The 3,250 PSI operating pressure is ideal for running grapple saws.

### **Rotation System**

- 1] Continuous rotation using heavy duty, 27" rotation bearing and hydraulic motor/gearbox capable of providing 7 RPM and 8,700 Ft. Lbs. of torque.
- 2] Foot pedal or joystick controlled.

### **Tower**

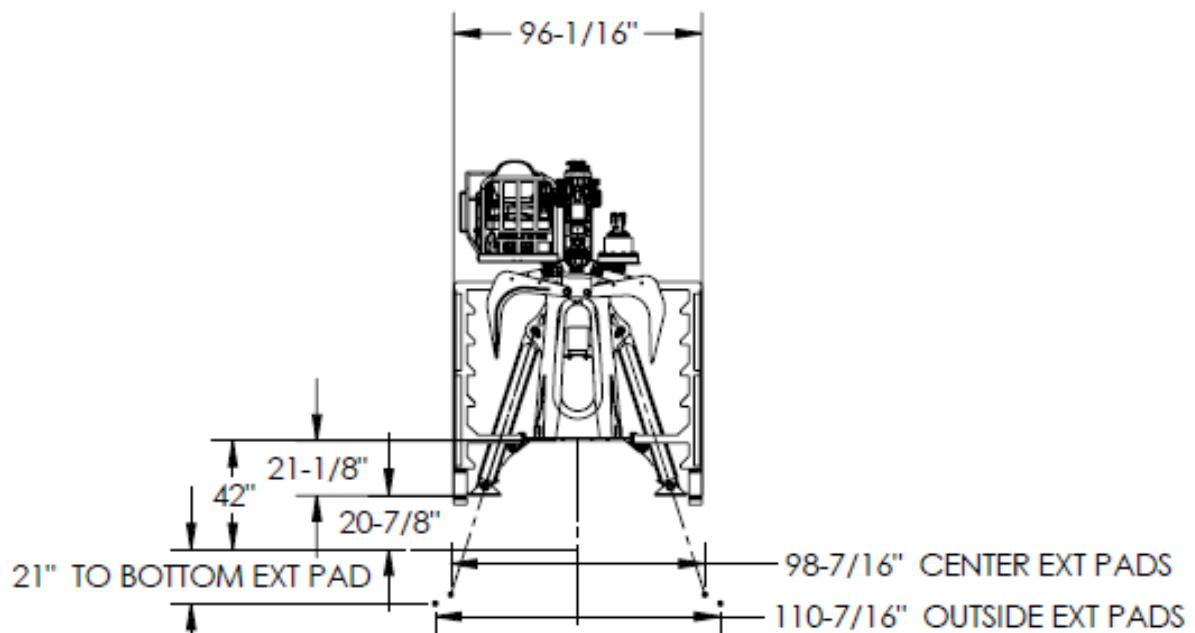
- 1] Fabricated structure with enhanced access to hydraulic and electrical collector, with easily removable metal covers.
- 2] 20" wide, dual ladders, featuring 2" deep rungs with grip strut treading for maximum traction/anti slip. Solid round, 3/4" diameter steel rod, hand grips.
- 3] The tower requires 26" of truck frame and can be mounted either as a back of cab, tail mount or trailer mount.

### **Platform**

- 1] Platform rotates with operator for maximum visibility.
- 2] Ergonomic seat and joystick controls for maximum comfort.
- 3] Safety guard rail around operator and heavy duty, front shield.
- 4] Comfortable, fold down operator's seat with seat belt.

### **Stabilizers**

- 1] Independently operated stabilizer legs allow loader to be operated on uneven surfaces. Controls located on operator's platform.
- 2] Fixed leg pads or swivel leg pads form to the contour of the ground, providing maximum surface contact for enhanced stability.
- 3] Stabilizer legs and cylinders are removable above ground for easier serviceability.
- 4] Dimensions- See below:





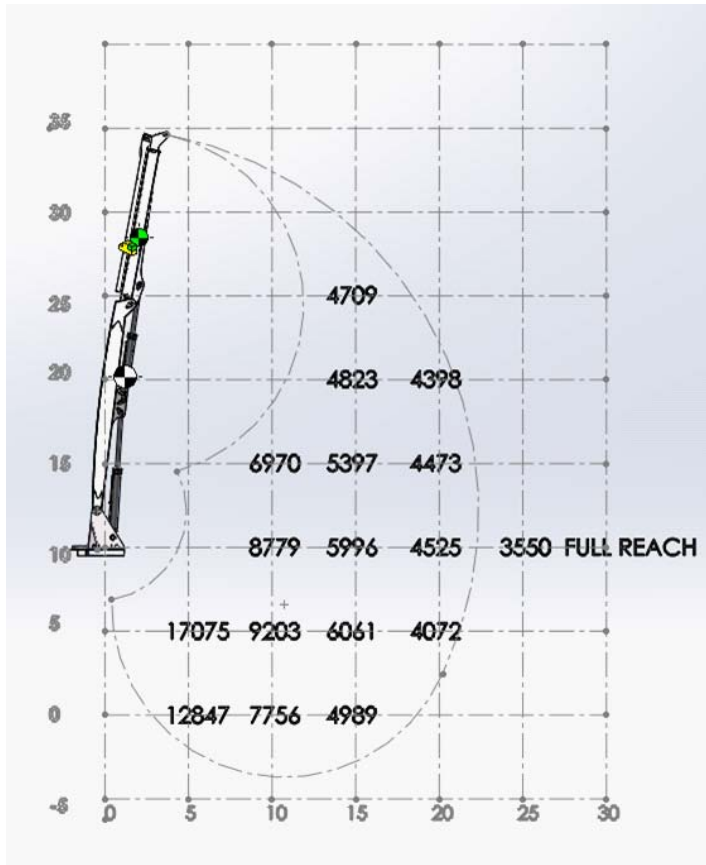
**Cylinders**

- 1] Designed for high pressure.
- 2] Built in, counterbalance (load locks), on all cylinders, including stabilizer legs & grapple.
- 3] Induction hardened rods on main and jib cylinders for better protection against impact.
- 4] Robotic welded barrels / Inertia welded rod/rod eyes.
- 5] Built in hydraulic slow downs.
- 6] 2.5" Cylinder pins and bearings for longer life.

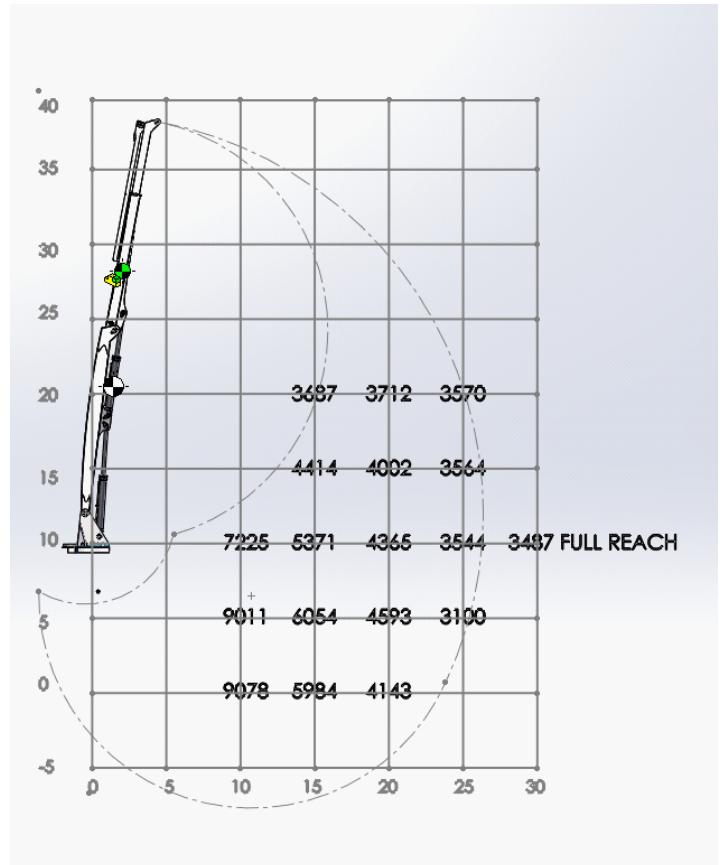
**Miscellaneous**

- 1] The weight of the loader, minus the attachment is 6,250 Lbs. (2,840 Kg.)
- 2] Bultrite offers a wide variety of attachments to suit numerous applications.
- 3] Mounting bolts are included in the price of the loader.
- 4] Lubrication - a centralized, lubrication manifold block is provided and can be greased while the operator is sitting down in his seat. This system greases all pivot points except the jib tip and attachment.
- 5] Standard colors are Bultrite yellow, white or black. Custom colors available upon request.

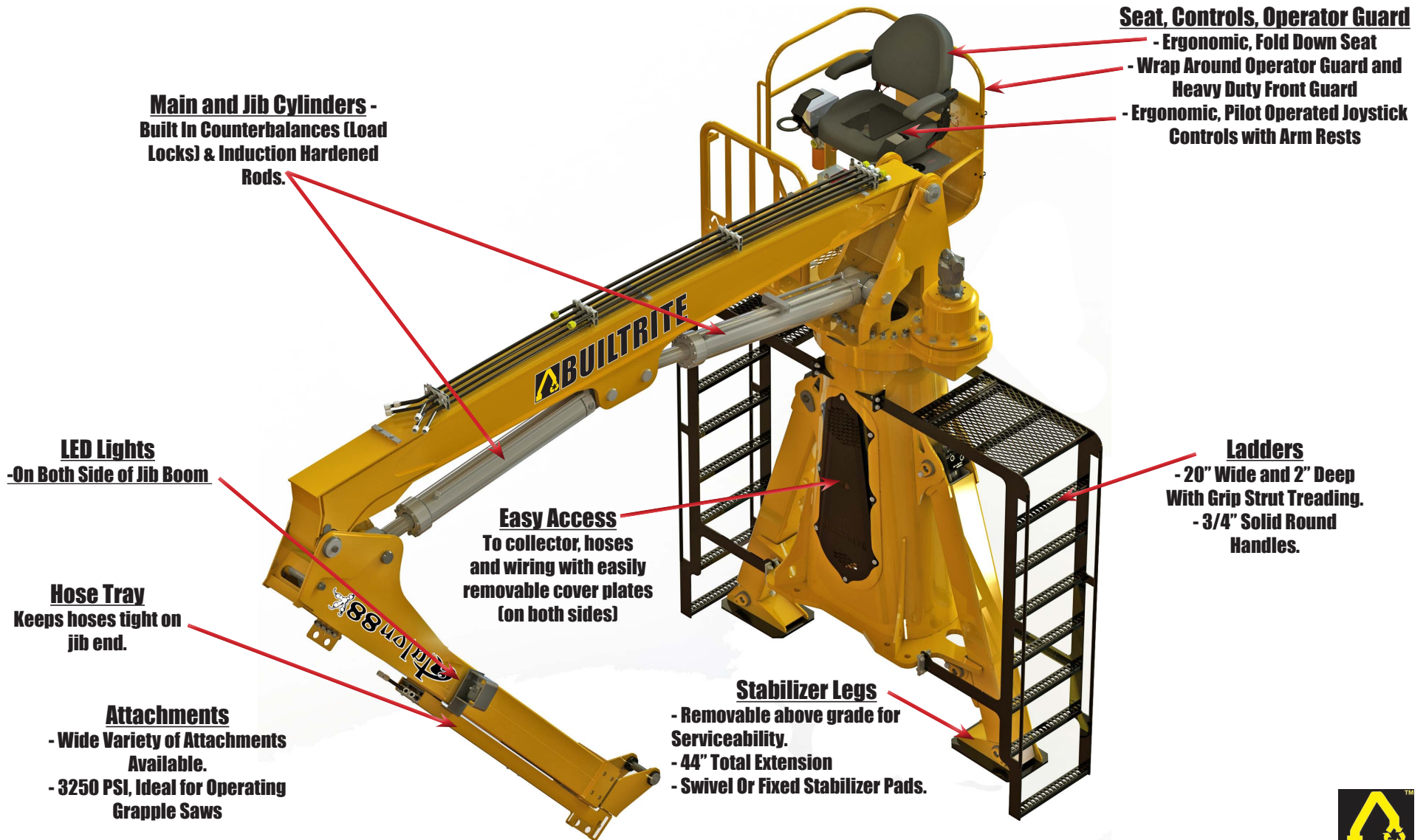
**Lift Capacity Chart @ 22'  
(Telescopic Section Retracted)**



**Lift Capacity Chart @ 26'  
(Telescopic Section Extended)**



**Note:** The lift capacities shown above do not reflect the weight of a grapple or magnet. Grapple and/or magnet weights must be deducted from the above figures to gauge the lift capacity with these attachments.



**Main and Jib Cylinders -**  
Built In Counterbalances (Load  
Locks) & Induction Hardened  
Rods.

**Seat, Controls, Operator Guard**

- Ergonomic, Fold Down Seat
- Wrap Around Operator Guard and Heavy Duty Front Guard
- Ergonomic, Pilot Operated Joystick Controls with Arm Rests

**LED Lights**  
-On Both Side of Jib Boom

**Hose Tray**  
Keeps hoses tight on  
jib end.

**Easy Access**  
To collector, hoses  
and wiring with easily  
removable cover plates  
(on both sides)

**Ladders**  
- 20" Wide and 2" Deep  
With Grip Strut Treading.  
- 3/4" Solid Round  
Handles.

**Stabilizer Legs**  
- Removable above grade for  
Serviceability.  
- 44" Total Extension  
- Swivel Or Fixed Stabilizer Pads.

**Attachments**  
- Wide Variety of Attachments  
Available.  
- 3250 PSI, Ideal for Operating  
Grapple Saws



BUILTRITE MANUFACTURING RESERVES THE RIGHT TO CHANGE SPECIFICATIONS AND PRICES WITHOUT NOTICE IN ORDER TO FOLLOW ITS POLICY OF CONSTANTLY STRIVING TO MANUFACTURE A BETTER PRODUCT WITHOUT INCURRING ANY LIABILITY TO PROVIDE THESE NEW FEATURES ON ANY UNITS PREVIOUSLY MANUFACTURED.

**Builtrite Manufacturing**

530 Recycle Center Drive, Two Harbors, Minnesota, U.S.A. 55616

Web: [www.builtritehandlers.com](http://www.builtritehandlers.com) E-Mail: [info@builtritehandlers.com](mailto:info@builtritehandlers.com) Phone: 218-834-5555 Fax: 218-834-5556