



Truck Mounted Material Handlers

Model 2200-TM

Builtrite™, Heavy Duty, Truck Mounted Material Handlers (Back of Cab and Tail Mounts) have proven themselves in a number of applications to be the tool of choice for handling a wide variety of materials. From mining, scrap handling, utility, railroad and general construction, we can custom design a crane for all of your material handling needs. The 2200-TM is the real workhorse of our fleet, capable of handling over 21,000 Lbs. (9,545 Kg.) @ 10' (3M), using high pressure hydraulics (4000 PSI / 276 Bar). High lift capacity, excellent operator visibility and comfort make the 2200-TM an easy choice.



Back Of Cab Mounted



Tail Mounted

Features and Specifications:

Lift Capacity (Less attachment)

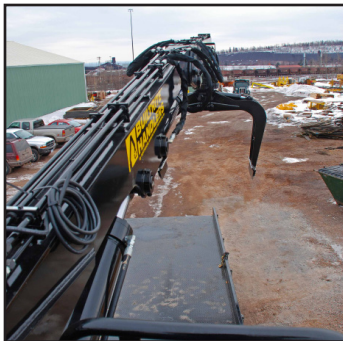
- 21,658 Lbs. (9,845 Kg.) @ 10' (3M) R
- 14,677 Lbs. (6,671 Kg.) @ 15' (4.57 M) R
- 11,108 Lbs. (5,049 Kg.) @ 20' (6M) R
- 7,634 Lbs. (3,470 Kg.) @ 25' (7.6M) R

Boom Data

- Horizontal Reach = 25' (7.6M)
- Vertical Reach = 37'6" (11.4M)
- Main Boom Length = 14'2" (4.3M)
- Jib Boom Length = 11'4" (3.45M)
- High yield, fabricated steel construction.
- 3" (76mm) boom pivot and cylinder pins with magnesium bronze bushings at all pivot points.
- 2" (51mm) jib tip pin.

Boom Cylinders

- One 6" (152mm) bore x 41" (1,041mm) stroke x 4" (102mm) rod main boom cylinder.
- One 6" (152mm) bore x 32" (813mm) stroke x 3.5" (89mm) rod jib boom cylinder.
- Double acting, heavy walled, honed cylinder tube.
- Wear rings on both pistons and glands.
- Rods with heavy chrome plating.
- Bolt-on end caps.



Swing System

- 360° continuous rotation with a 39" (990mm) diameter turntable bearing, powered by two swing motors and planetary gear boxes.
- Swing brake on each motor.

Platform

- Rotating operator's platform with fold-down, adjustable seat and 2-lever, hydraulic joysticks with servo shut-off.
- Foot controlled swing.
- Safety guard rail around operator.

Main Frame

- High tensile, heavy wall rolled steel tube.
- Overall height 13'5" (4.1M) mounted on 44" (1.1M) high truck frame.

Stabilizers

- 15' (4.6M), fold-away with two (2) 7" (178mm) diameter x 17" (432mm) stroke x 3" (76mm) rod cylinders.
- Control valves are mounted on rotating platform for easy operator access.
- Heavy duty ladder on platform side.



Specifications (cont.) & Range Diagram

Miscellaneous

- Requires 44" (1,117mm) of mounting space.
- Mounting bolts and support plates included.
- Approximate weight with standard equipment (less attachment and oil) is 11,785 Lbs. (5,357 Kg.).
- Centralized bulkhead for greasing boom pivot points and turntable located on platform.

Options/Accessories

- Boom lengths up to 27'6" (8.4M).
- Horizontal out / vertical down stabilizers.
- Hand swing control in lieu of foot swing.
- Various grapples and other attachments available.
- Custom colors to match customer preference.

Available Attachments

We offer a wide variety of attachments including:



Hydraulic Reservoir

- 55 Gallons (211 Liters) loader mounted, with suction and return line filters.
- Air to oil cooler, mounted on hydraulic tank with a 12-volt fan.

Power Source

- Power take-off from truck engine.

Pump

- Pressure compensated, on-demand, load sensing pump.
- 46 GPM (177 Liters) @ 1300 engine RPM.
- 4000 PSI (275 Bar) operating system.

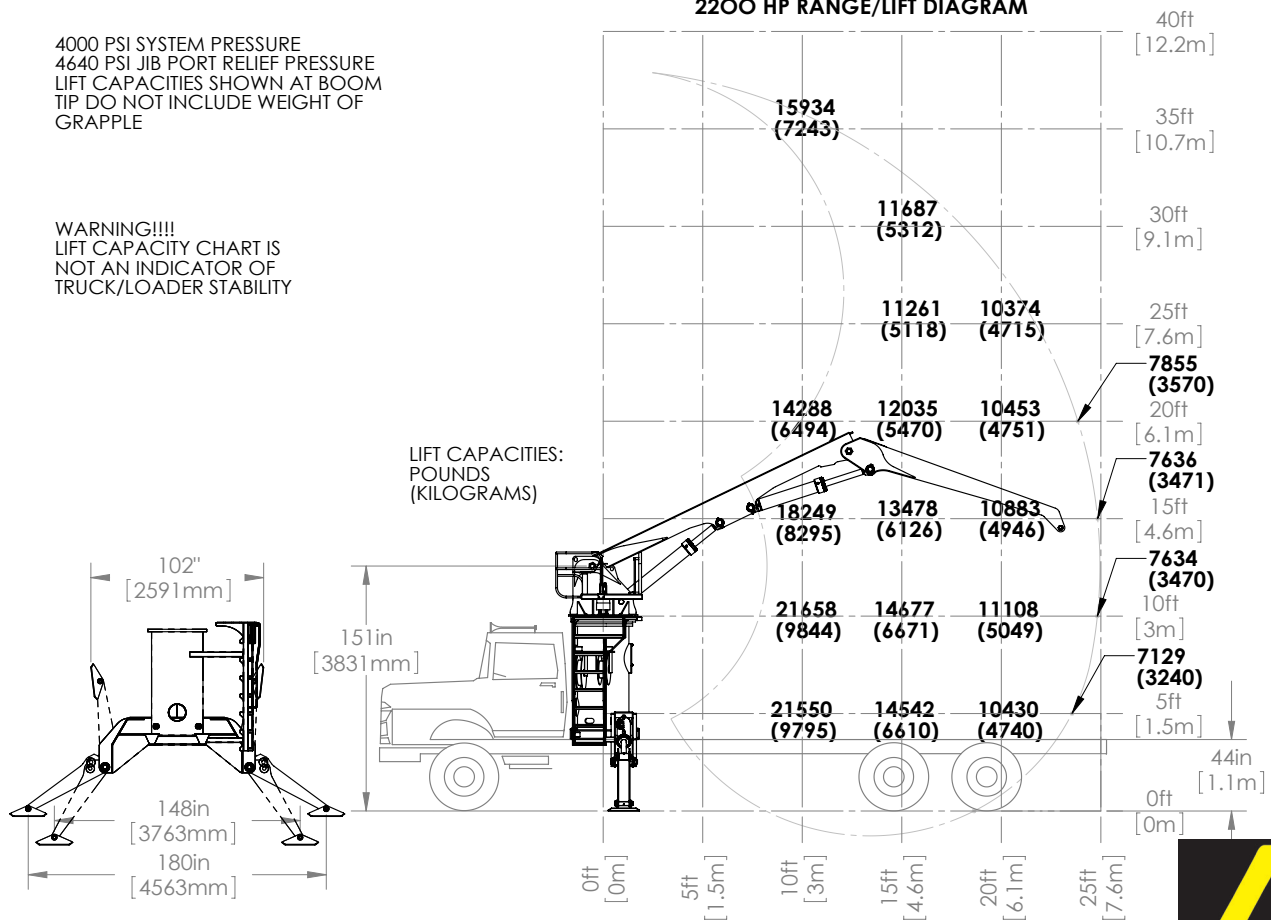
Control Valves

- Pressure compensating with load sensing controls.

4000 PSI SYSTEM PRESSURE
4640 PSI JIB PORT RELIEF PRESSURE
LIFT CAPACITIES SHOWN AT BOOM TIP DO NOT INCLUDE WEIGHT OF GRAPPLE

WARNING!!!!
LIFT CAPACITY CHART IS NOT AN INDICATOR OF TRUCK/LOADER STABILITY

**NORTHSHORE MANUFACTURING
2200 HP RANGE/LIFT DIAGRAM**



BUILRITE MANUFACTURING RESERVES THE RIGHT TO CHANGE SPECIFICATIONS AND PRICES WITHOUT NOTICE IN ORDER TO FOLLOW ITS POLICY OF CONSTANTLY STRIVING TO MANUFACTURE A BETTER PRODUCT WITHOUT INCURRING ANY LIABILITY TO PROVIDE THESE NEW FEATURES ON ANY UNITS PREVIOUSLY MANUFACTURED.

Builrite Manufacturing, Inc.

530 Recycle Center Drive, Two Harbors, Minnesota, U.S.A. 55616

Web: www.builritehandlers.com E-Mail: info@builritehandlers.com Phone: 218-834-5555 Fax: 218-834-5556