

Builtrite™, Stationary Electric Material Handlers have proven themselves in a number of waste and scrap handling applications, capable of handling a wide variety of materials. With a wide array of options, boom configurations and attachments available, let Builtrite design a material handler to maximize production at your facility. Stationary Electric Material Handlers are much less expensive to operate, safer, quieter and don't produce emissions like diesel powered, mobile equipment. Maintenance costs are also less and the power unit can be remotely located where it is not subjected to dusty conditions, further reducing maintenance costs.



Remote power unit and operator's station: 25' (7.6 M), hip (gooseneck) styled boom for loading and tamping solid waste.



Self contained Cab with power unit mounted on the floor: 27' (8.2M), hip (gooseneck) styled boom for loading and tamping solid waste.

Features and Specifications:

Lift Capacity (Less attachment)

- 22,300 Lbs. (10,136 Kg.) @ 10' (3M) R
- 13,900 Lbs. (6,318 Kg.) @ 15' (4.57 M) R
- 9,100 Lbs. (4,136 Kg.) @ 20' (6M) R
- 6,300 Lbs. (2,864 Kg.) @ 25' (7.6M) R
- 5,000 Lbs. (2,273 Kg.) @ 30' (9.1M) R

Boom Data

- Horizontal Reach = 25-35' (7.6-10.7M), depending upon application requirement.
- Fabricated design, high yield steel construction.
- 3" (76mm) boom pivot, 3" (76mm) jib cylinder pin & 2.5" (64mm) main boom lift cylinder pins.
- Magnesium bronze bushings at all boom pivot points.

Boom Cylinders

- Two (2) 6" (152mm) bore x 36" (914mm) stroke x 3" (76mm) rod main boom cylinders.
- One (1) 7" (178mm) bore x 36" (914mm) stroke x 3.5" (89mm) rod, jib boom cylinder.
- Double acting, heavy walled, honed cylinder tube with cushioned stops.
- Wear rings on both pistons and glands.
- Rods with heavy chrome plating.
- Accumulators on main lift cylinders to cushion shock loading.

Swing System

- Standard, non-continuous rotation with a 39" (990mm) diameter turntable bearing, powered by two swing motors and planetary gear boxes. Continuous rotation optional.

Control Deck

- Central control console with instrumentation and start/stop controls.
- Foot or hand operated swing control.

Power Source

- One (1) 75 HP 460 Volt 3 Phase, Totally Enclosed, Fan Cooled (T.E.F.C.) electric motor. The Model 2100-SE utilizes approximately 28-50 Kilowatts per hour, depending upon the application.

Electrical Package

- Starter, phase sequence monitor, control accessories group are all in Nema 4 enclosure. Start/stop controls on control console. Electric slip ring when continuous rotation is required. Main breaker base or power unit mounted.

Pedestal Base

- 33" (838mm) high pedestal base with inspection port hole.

Hydraulic System

- 110 Gallon (416L) hydraulic reservoir with suction and return filters, stack type control valves with main relief and safety port relief for boom function.
- One triple gear pump.
- Hydraulic oil cooler. 3HP motor drives fan and AC compressor.
- Shutoff valves, heavy walled tubing & multi-wire hose throughout system.



Operator's Cab

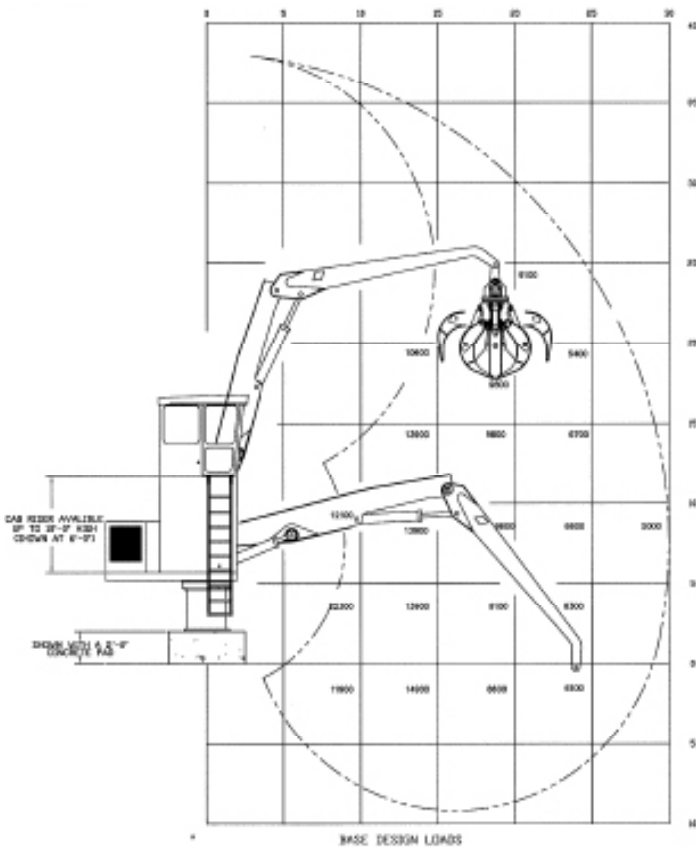
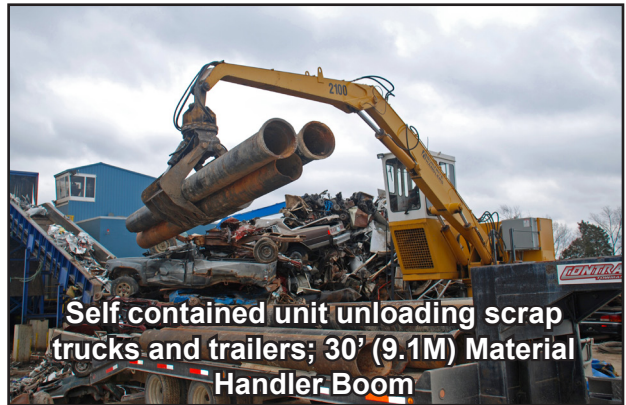
- 38" (965mm) x 51" (1,295mm), fully insulated, equipped with a sliding door, sliding window, wiper/washer, defroster, dome light, deluxe bucket seat, radio/CD and air conditioning.

Miscellaneous

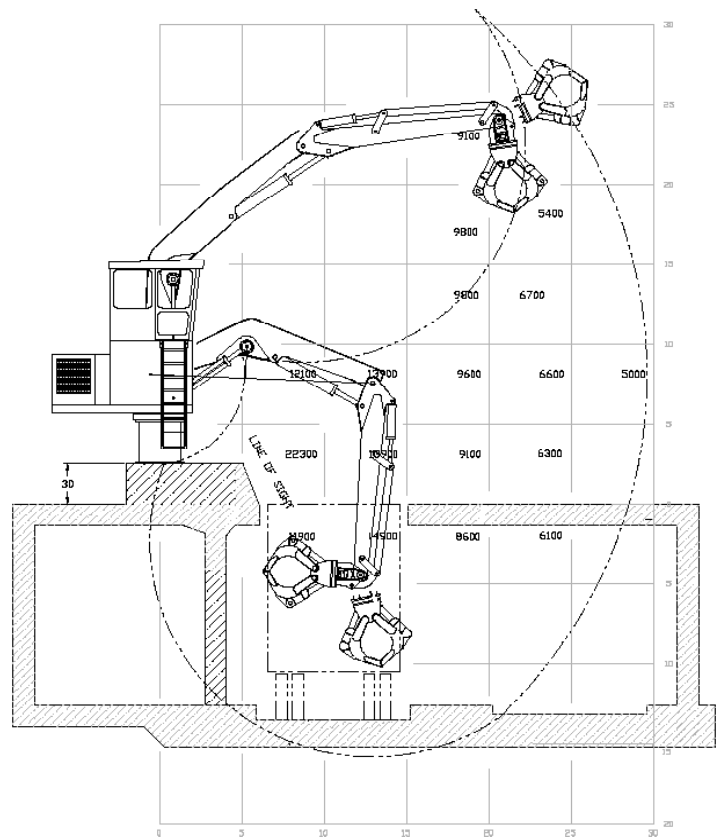
- Hydraulic Tank Filled.
- Unit greased and tested prior to shipment.
- Manual, centralized grease system.

Options / Accessories

- Remote operator controls and remote power unit options.
- Special grapples.
- Cab and boom lights.
- Visual warning system.
- Wristing boom.
- Air conditioning / 120 volt, electric heater.
- Automatic, centralized grease system.
- Rectifier package for magnet.
- Continuous rotation option with auxiliary pass electrical collector.
- Custom boom lengths.



Material Handler Configuration



Solid Waste Tamping Configuration



BUILTRITE MANUFACTURING RESERVES THE RIGHT TO CHANGE SPECIFICATIONS AND PRICES WITHOUT NOTICE IN ORDER TO FOLLOW ITS POLICY OF CONSTANTLY STRIVING TO MANUFACTURE A BETTER PRODUCT WITHOUT INCURRING ANY LIABILITY TO PROVIDE THESE NEW FEATURES ON ANY UNITS PREVIOUSLY MANUFACTURED.

Builtrite Manufacturing

530 Recycle Center Drive, Two Harbors, Minnesota, U.S.A. 55616

Web: www.builtritehandlers.com **E-Mail:** info@builtritehandlers.com **Phone:** 218-834-5555 **Fax:** 218-834-5556