



Stationary Electric Material Handlers

Model 5600-SE

Builtrite™, Stationary Electric Material Handlers have proven themselves in a number of waste and scrap handling applications, capable of handling a wide variety of materials. With a wide array of options, boom configurations and attachments available, let Builtrite design a material handler to maximize production at your facility. Stationary Electric Material Handlers are much less expensive to operate, safer, quieter and don't produce emissions like diesel powered, mobile equipment. Maintenance costs are also less and the operator station can be remotely located.



Self Contained Unit With 3-Piece Boom



Remote Controlled Unit With 2-Piece Boom

Features and Specifications:

Lift Capacity

Please see the individual lift charts for both the 2-piece and 3-piece boom on back page.

Boom Cylinders

A] 2-Piece Boom - Total Length = 56' (17 M)

- 1) Main** - Length = 32'6" (9,906mm)
Cylinders - Qty. 2 x 78.875" (2003mm) Stroke x 6" (152mm) Bore
- 2) Jib** - Length = 26' (7,925mm)
Cylinders - Qty. 2 x 75.5" (1,918mm) Stroke x 6" (152mm)

B] 3-Piece Boom - Total Length = 57' (17.4M)

- 1) Main** - Length = 24'6" (7,468mm)
Cylinders - Qty. 2 x 71" (1,803mm) Stroke x 5.5" (140mm) Bore
- 2) Secondary** - Length = 16' (4,877mm)
Cylinders - Qty. 2 x 50" (1,270mm) Stroke x 5.5" (140mm) Bore
- 3) Jib** - Length = 17' (5,182mm)
Cylinder - Qty. 1 x 48" (1,219mm) Stroke x 6" (152mm) Bore

- Double acting, heavy walled, honed cylinder tube with cushioned stops.
- Wear rings on both pistons and glands.
- Rods with heavy chrome plating.
- Accumulators on main lift cylinders to cushion shock loading.

Swing System

- 360° continuous rotation with a 62" (1,575mm) diameter turntable bearing, powered by two swing motors and planetary gear boxes.

Control Deck

- Central control console with instrumentation and start/stop controls.
- Hand or Foot operated swing control.

Power Source

- One (1) 300 HP 460 Volt 3 Phase, Totally Enclosed, Fan Cooled (T.E.F.C.) electric motor.

Electrical Package

- Starter phase sequence, control accessories group, breaker in Nema 4 enclosure, start/stop button on control console. Enclosed 4 + 32 circuit electric collector (when required).

Pedestal Base

- 38" (965mm) high, cylindrical pedestal base with inspection port hole.

Hydraulic System

- 250 Gallon (947 L) hydraulic reservoir with suction and return filters, stack type control valves with main relief and safety port relief for each function.
- Two (2) open loop piston pumps for main boom and grapple functions. One piston type pump for swing and servo type functions. One single gear pump for cooling and filtration.
- Hydraulic oil cooler (5HP fan motor) & AC Compressor.
- Shutoff valves, heavy walled tubing & multi-wire hose throughout system.
- 4250 PSI (293 Bar) operating system.

Operator's Cab

- 39" (991mm) x 63" (1,600), fully insulated, forward sloping, equipped with a sliding door, sliding window, tinted windshield, wiper/washer, defroster, dome light and deluxe bucket seat. Heat / Air Conditioning standard.

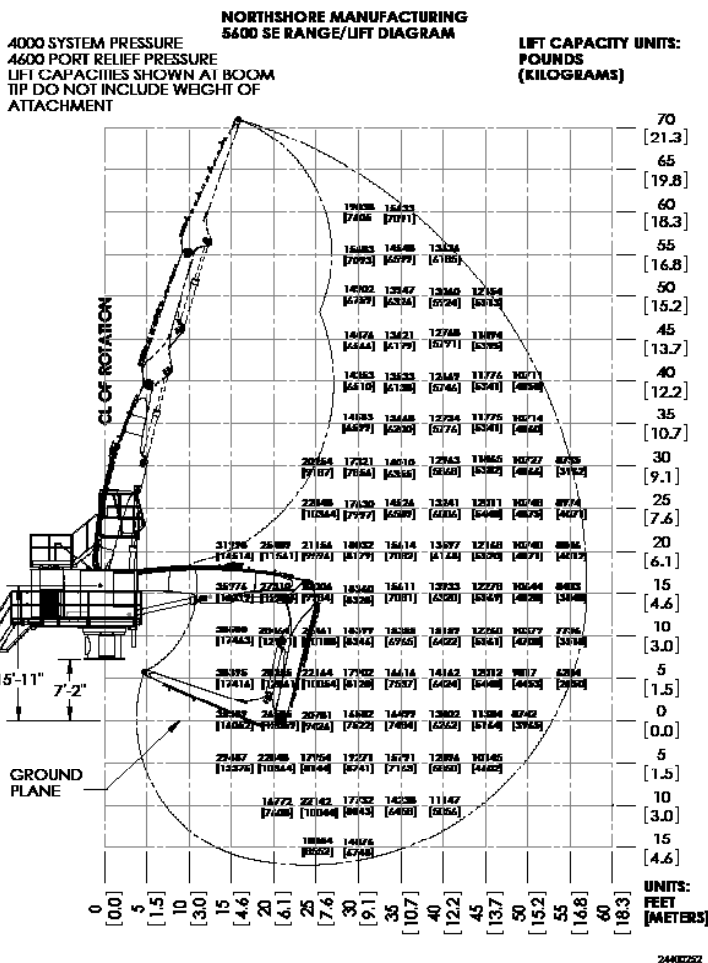


Miscellaneous

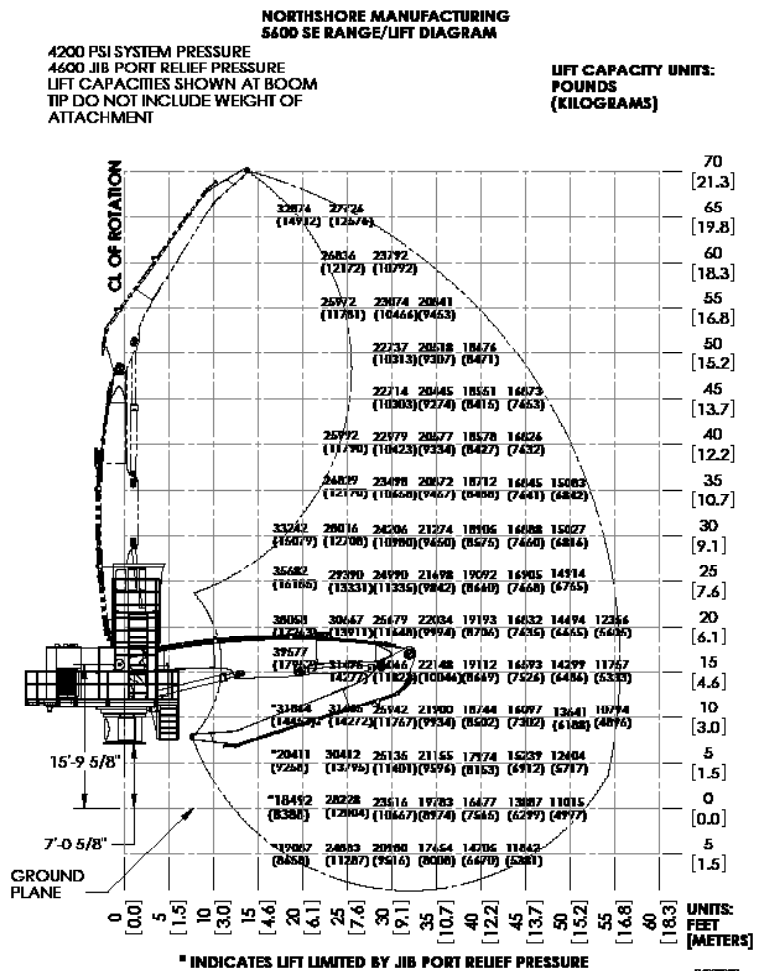
- Hydraulic Tank Filled.
- Manual, centralized grease system.

Options / Accessories

- Remote operator controls and remote power unit.
- Special grapples.
- Cab and boom work lights.
- Audio/visual warning system.
- Wristing boom.
- Automatic, centralized grease system.
- Rectifier package for magnet.
- Custom boom lengths.
- Radio/CD.



3-Piece Boom



2-Piece Boom



BUILTRITE MANUFACTURING RESERVES THE RIGHT TO CHANGE SPECIFICATIONS AND PRICES WITHOUT NOTICE IN ORDER TO FOLLOW ITS POLICY OF CONSTANTLY STRIVING TO MANUFACTURE A BETTER PRODUCT WITHOUT INCURRING ANY LIABILITY TO PROVIDE THESE NEW FEATURES ON ANY UNITS PREVIOUSLY MANUFACTURED.

Builtrite Manufacturing

530 Recycle Center Drive, Two Harbors, Minnesota, U.S.A. 55616

Web: www.builtritehandlers.com E-Mail: info@builtritehandlers.com Phone: 218-834-5555 Fax: 218-834-5556