

The Builtrite™ Model 6500-SE, Stationary Electric Material Handler is our largest handler to date, designed to provide superior lift and reach capacity. This loader is ideal for scrap, log/pulpwood, solid waste, dockside loading of bulk material handling applications, etc. With a wide array of options, boom configurations and attachments available, let Builtrite design a material handler to maximize production at your facility. Stationary Electric Material Handlers are much less expensive to operate and maintain while remaining safer, quieter and producing no emissions like diesel powered, mobile equipment.



**6500-SE With Two-Piece Boom, Full Catwalk/Stairway**

(note: Pedestal foundation base (blue with yellow ladder) is not included with the machine.)

**Features and Specifications:**

**Lift Capacity @ 4500 PSI (310 Bar). Less Attachment @ ground level position**

- 25' (7,620mm) radius = 33,861# (15,391 Kg.)
- 35' (10,668mm) radius = 31,545# (14,339 Kg.)
- 45' (13,716mm) radius = 23,281# (10,582 Kg.)
- 55' (16,764mm) radius = 16,908# (7,685 Kg.)
- 67' (20,422mm) radius = 13,364# (6,075 Kg.)

(Please see full range diagram on back)

**Boom Dimensions and Cylinder Specifications**

**A] 2-Piece Boom - Total Length = 67' (20.4M)**

**1) Main - Length = 36' (10,972mm)**

Cylinders - Qty. 2 x 82.5" (2,096 mm) Stroke x 7.5" (191 mm) Bore

**2) Jib - Length = 32' (9,754mm)**

Cylinders - Qty. 2 x 60" (1,524mm) Stroke x 7.5" (152mm) Bore

- Double acting, heavy walled, honed cylinder tube with electronic, cushioned stops.
- Wear rings on both pistons and glands.
- Rods induction hardened and heavy chrome plating.
- Accumulators on main lift cylinders to cushion shock loading.

**Swing System**

- 360° continuous rotation with a 74.8" (1,900mm) diameter turntable bearing, powered by two swing motors and planetary gear boxes. Swing torque = 124,000 ft. Lbs.

**Control Deck**

- Central control console with instrumentation and start/stop controls.
- Hand or Foot operated swing control.

**Power Source**

- One (1) 350 HP, 460 Volt, 3 Phase, Totally Enclosed, Fan Cooled (T.E.F.C.) Electric Motor (Note: Other voltage motors can be supplied to match local supplies.)

**Electrical Package**

- Starter phase sequence, control accessories group, breaker in Nema 4 enclosure, start/stop button on control console. Enclosed, 4 circuit electric collector (when required).

**Pedestal Base**

- 40" (1,016mm) high, cone shaped pedestal base with inspection port hole.

**Hydraulic System**

- 300 Gallon (1,136L) hydraulic reservoir with suction and return filters, stack type control valves with main relief and safety port relief for each function.
- Three (3) open loop piston pumps for main boom, jib boom and grapple functions. One (1) piston type pump for swing function. One (1) single gear pump for cooling and filtration.

**Hydraulic System (continued)**

- High pressure attachment filters.
- Hydraulic oil cooler (7.5HP fan motor) & independent, 3HP Motor, AC Compressor drive.
- Shutoff valves, heavy walled tubing & multi-wire hose throughout system.
- 4500 PSI (310 Bar) operating system.

**Operator's Cab**

• 39" (991mm) x 63" (1,600), fully insulated, forward sloping, equipped with a sliding door, sliding window, tinted windshield, wiper/washer, defroster, dome light and deluxe bucket seat. AM/FM Radio and Heat / Air Conditioning standard. The cab is pressurized to minimize dust.



**Miscellaneous**

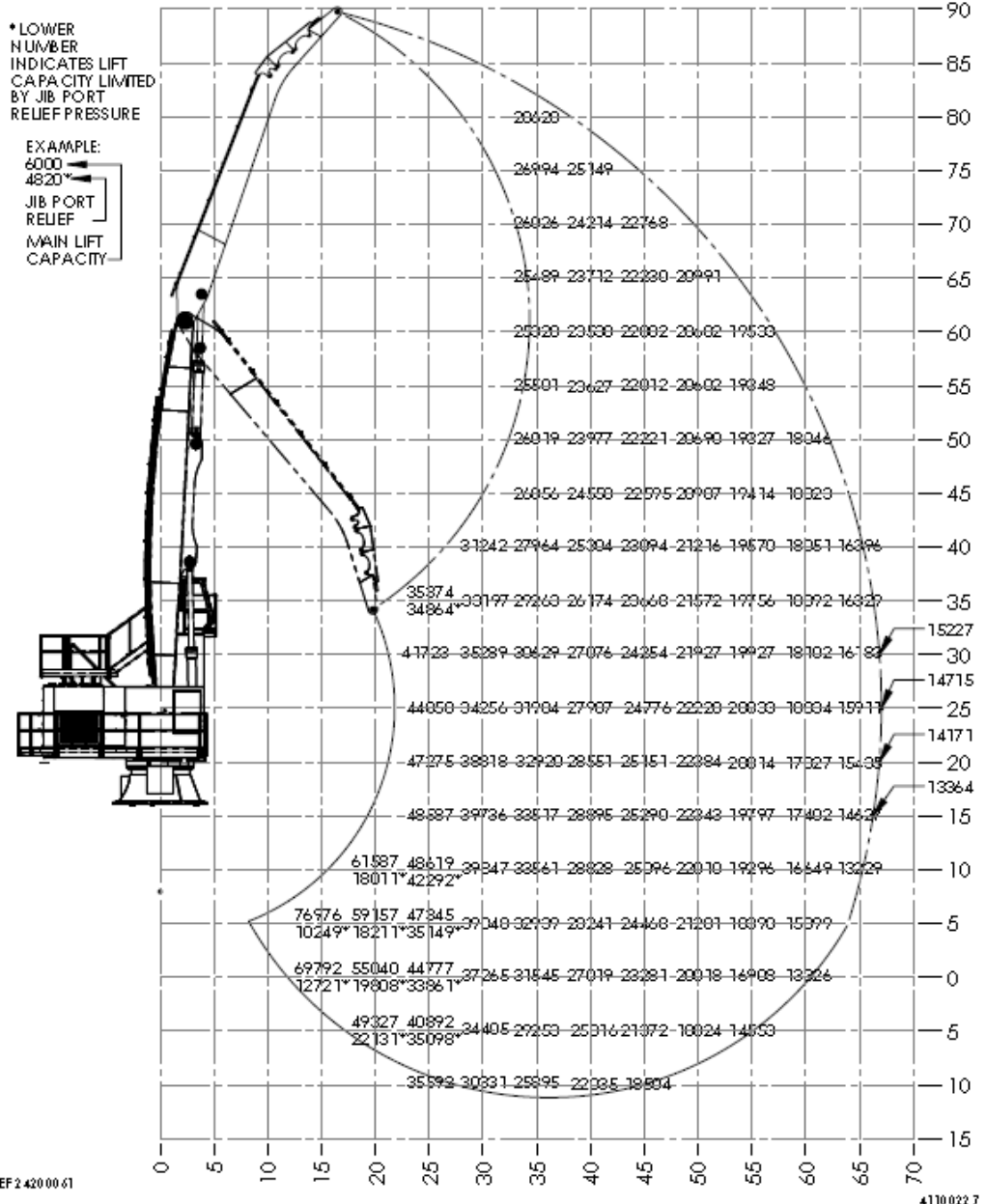
- Hydraulic Tank Filled.
- Total Machine Weight = 103,000 pounds / 46,800 Kg.

**Options / Accessories**

- Variety of grapples, including 4 Tine Orange Peels, Pulpwood, Clamshells, etc.
- Cab and boom work lights.
- Audio/visual warning system.
- Cab Riser
- Automatic, Lincoln Lube brand, centralized grease system.
- Rectifier package for magnet.
- Custom boom lengths.

4500 PSI OPERATING PRESSURE  
5000 PSI PORT RELIEF PRESSURE  
LIFT CAPACITIES DO NOT INCLUDE  
WEIGHT OF ATTACHMENT

**NORTHSHORE MANUFACTURING  
6500SE 67' RANGE/LIFT DIAGRAM**



REF 2 420 00 61

4110 022 7



BUILTRITE MANUFACTURING RESERVES THE RIGHT TO CHANGE SPECIFICATIONS AND PRICES WITHOUT NOTICE IN ORDER TO FOLLOW ITS POLICY OF CONSTANTLY STRIVING TO MANUFACTURE A BETTER PRODUCT WITHOUT INCURRING ANY LIABILITY TO PROVIDE THESE NEW FEATURES ON ANY UNITS PREVIOUSLY MANUFACTURED.

**Builtrite Manufacturing**

530 Recycle Center Drive, Two Harbors, Minnesota, U.S.A. 55616

Web: www.builtritehandlers.com E-Mail: info@builtritehandlers.com Phone: 218-834-5555 Fax: 218-834-5556