



DAF

Front-Mounted Mulchers

The DAF models ranges from the DAF-150D, for carrier with 75 minimum horsepower, to the DAF250Ex, for carriers with 250 minimum horsepower. They can be installed on any type of front-mounted carrier with sufficient hydraulic lines, weight and power. The smaller models are ideal for plantation maintenance and heavy brush clearing. The heavier model are real juggernauts that stops to nothing except your command.



Pipeline and transmission line maintenance



Highways, roads and trails maintenance



Firebreak creation and forest management



Private property maintenance and land clearing

DENIS CIMA

211 rue Notre-Dame
Roxton Falls QC J0H 1E0
Canada

www.deniscimaf.com

Toll free : 877-279-2300

Phone : 450-548-7007

Fax: 450-548-7008

info@deniscimaf.com



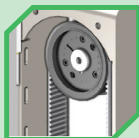
Rings

Protective rings that limit the size of the bites and considerably reduce risks of breakage on the knife holders.



Motor

Variable displacement, axial-piston motors that minimize overheating and improve re-acceleration.



Drive

Industrial cogged belt drive system that prevents slippage and reduces effort applied to bearings compared with V-belts, for longer bearing life.



Knives

Heat-treated, bolt-on forged knives that deliver maximum resistance to impact and abrasion, and that can be sharpened right on the unit.

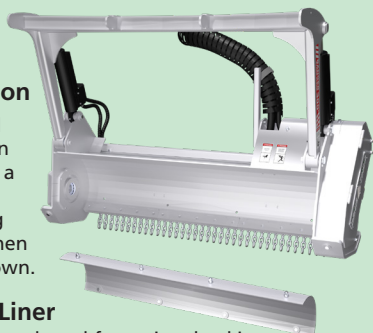


Easy replacement

Easy-to-replace knives:
A single nut and bolt hold the knife in place. Replacing worn knives is a snap.

Hydraulic pushbar option

Especially useful when working in older growth as a secure way to direct where big trees will fall when cutting them down.



Replaceable Liner

With the high speeds and forces involved in industrial mulching, even the hardest steel frame is subject to wear and tear. This easy-to-replace, bolt-in wear liner extends the lifetime of the unit by protecting the frame.

SPECIFICATIONS

DAF-250Ex

DAF-225Ex

DAF-

Approximate Min. Carrier Power [kW (hp)]	190 (250)	150 (200)	130
Cutting Width [cm (in)]	251 (99)	216 (85)	222
Cutting Distance from Ground Level [cm (in)]	1.5 (0.6)	1.5 (0.6)	1.5
Number of Blades on Rotor	35	31	3
Optimal Target Material Diameter [cm (in)]	60 (24)	60 (24)	40
Exterior Width [cm (in)]	297 (117)	260 (102)	254
Exterior Height (with Pushbar) [cm (in)]	147 (58)	147 (58)	144
Exterior Width (with Pushbar) [cm (in)]	135 (53)	135 (53)	135
Exterior Height (without Pushbar) [cm (in)]	96 (38)	96 (38)	96
Exterior Width (without Pushbar) [cm (in)]	83 (33)	83 (33)	83
Rotor Diameter [cm (in)]	51 (20)	51 (20)	51
Approximate Typical Weight [kg (lbs)]	2450 (5400)	2360 (5200)	2150

HYDRAULIC SYSTEM

DAF-250Ex

DAF-225Ex

DAF-

Variable Displacement Axial Piston Motor [cc]	2x 115	2x 115	1
Required Continuous Flow [L/min (gal/min)]	276 (73)	276 (73)	205
Max. Operating Pressure [bar (psi)]	380 (5500)	380 (5500)	380
Rotating Speed [rpm]	2500	2500	25
Pressure Line I.D. [# (in)]	#20 (1.25)	#20 (1.25)	#16
Return Line I.D. [# (in)]	#20 (1.25)	#20 (1.25)	#16
Drain Line I.D. [# (in)]	#16 (1.00)	#16 (1.00)	#12

FEATURES

DAF-250Ex

DAF-225Ex

DAF-

Type of Sharpenable Bolt-on Forged Blades	REGULAR	REGULAR	REG
Hydraulic Pushbar	Optional	Optional	Opt
Bolt-On Wear liner	Included	Included	Incl

225E	DAF-180E	DAF-180D	DAF-150D
(175)	95 (125)	56 (75)	52 (70)
(88)	189 (74)	189 (74)	150 (59)
(0.6)	1.2 (0.5)	1.2 (0.5)	1.2 (0.5)
31	27	27	21
(15)	25 (10)	20 (8)	15 (6)
(100)	223 (88)	219 (86)	180 (71)
(57)	140 (55)	138 (54)	138 (54)
(53)	119 (47)	120 (47)	111 (43)
(38)	81 (32)	79 (31)	79 (31)
(33)	74 (29)	71 (28)	66 (26)
(20)	51 (20)	46 (18)	46 (18)
(5400)	1500 (3300)	1450 (3200)	1050 (2300)

225E	DAF-180E	DAF-180D	DAF-150D
70	170	115	85
(54)	170 (45)	135 (36)	87 (23)
(5500)	380 (5500)	380 (5500)	380 (5500)
500	2500	2500	2500
(1.00)	#16 (1.00)	#16 (1.00)	#12 (1.00)
(1.00)	#16 (1.00)	#16 (1.00)	#12 (1.00)
(0.75)	#10 (0.625)	#10 (0.625)	#10 (0.625)

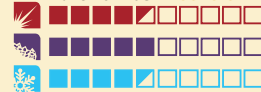
225E	DAF-180E	DAF-180D	DAF-150D
ULAR	REGULAR	REGULAR	REGULAR
ional	Optional	Optional	Optional
uded	Included	Included	Included

Minimum requirements; call your DENIS CIMAF's sale representative for guidance in selecting the best match.
This information is subject to change without notice.

Standard Blades



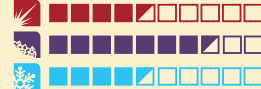
I S1 Blades (Basic) Part number: F0010-02



High-quality, high carbon alloy steel.
Good general application.



II S2 Blades (Carbide Layer) Part number: F0010-02-RL1



High-quality, high carbon alloy steel with laser applied tungsten carbide layer. Good general application especially in abrasive soils.



III S3 Blades (Impact resistance) Part number: F0010-03-2



High impact and shock resistant tool hardened using various heat treatments. Use where risk of impact is higher.



IV S4 Blades (Jack of all trades) Part number: F0010-03



High impact and shock resistant tool hardened using various heat and chemical treatments. Best all-around tool



V S5 Blades (Abrasion Resistance) Part number: F0010-03-3T



High impact and shock resistant tool, hardened with a special triple treatment.

Standard Hammers



VI C1 and C2 Hammers (Spike/Flat) Part number: FC1046C or FC1049M



High-quality, high carbon alloy steel with welded carbide hammer heads. Best used if the head is often exposed to rock or soil.

B-type Blades



I B1 Blades (V-back) Part number: F0012-02



High-quality, high carbon alloy steel. Good general application.
The V-back shape helps with impact resistance.



Headquarters

DENIS CIMA inc.

211 rue Notre-Dame,
Roxton Falls, QC, Canada,
J0H 1E0

TOLL FREE

1-877-279-2300

PHONE

1-450-548-7007

EMAIL

info@deniscimaf.com

FAX

1-450-548-7008

www.deniscimaf.com

DENIS CIMA ONLINE

Subscribe to our online services to
track the machines in your fleet,
request assistance, get manuals, parts
number list and many more upcoming.

Join the DENIS CIMA family!

DENIS CIMA