

Mini Excavators XE18U



XCMG FOR YOUR SUCCESS

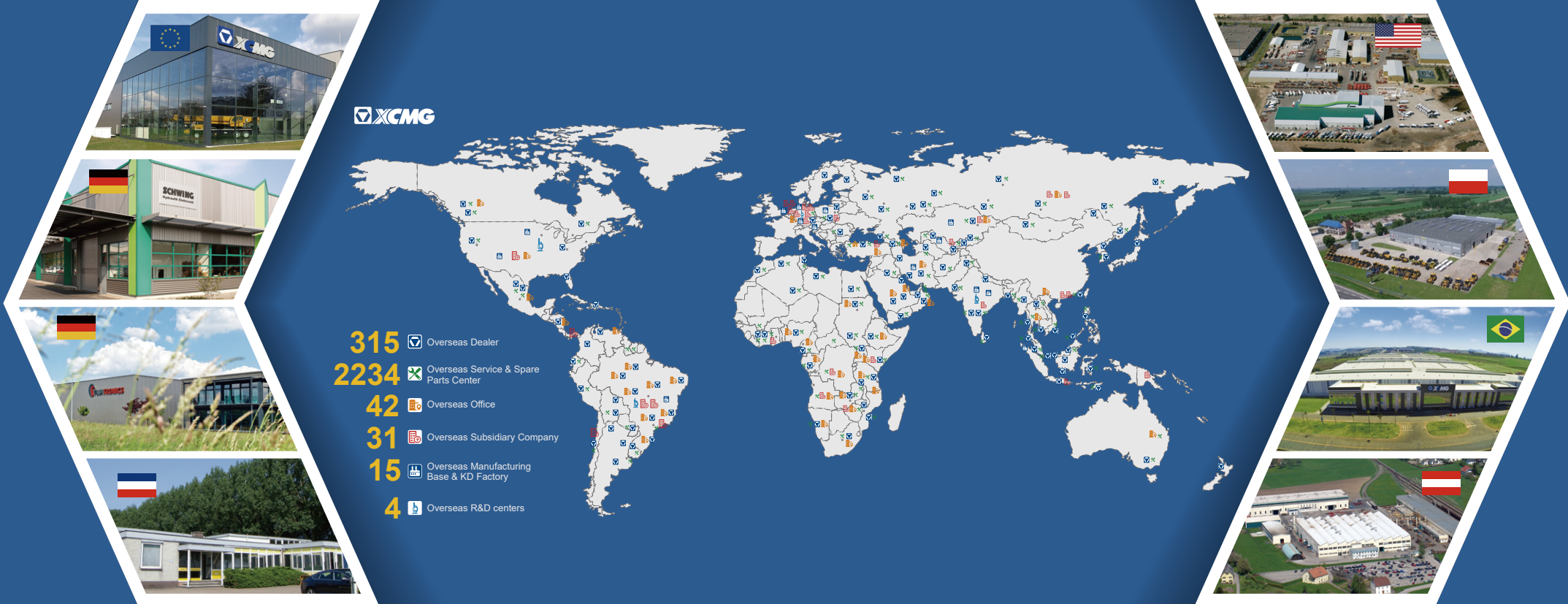
Rated Power: 11.8 kW (15.8 hp)
Operating Weight: 1 795 kg(3,968.3 lb)
Standard Bucket Capacity: 0.04 m³(0.05 yd³)

XCMG NORTH AMERICA CORPORATION
Add: 5145 Schirlls St. Las Vegas, Nevada 89118
Tel: +1 725 605 2777
Fax: +1 725 605 2888
E-Mail: bin@xcmg.com

XUZHOU CONSTRUCTION MACHINERY GROUP IMP. & EXP. CO., LTD
Add: N0.1, Tuolanshan Road, Xuzhou Economic Developing Zone,
Jiangsu, China 221004
Tel: +(86) 516 8773 9285
E-Mail: bin@xcmg.com



www.xcmg.com



INTRODUCTION OF XCMG

Founded in 1943, XCMG is the largest enterprise in the Chinese construction machinery industry. We offer the most diverse product line and the highest technological standards. We provide a comprehensive set of construction solutions, and we are the most internationally competitive firm in the industry. On KHL Yellow Table, we rank No. 1 in China and No.3 globally.

Across our offices in China, the US, Germany, India, and Brazil, XCMG has established a global collaborative research platform including national-level R&D facilities focused on advanced smart manufacturing technology. Our R&D team consists of top talents from around the globe. They are researching cutting-edge technologies such as new energy, unmanned driving and high-end parts. Our work has earned us numerous international patents and awards.

XCMG has the most comprehensive product line, meaning we can offer fully comprehensive solutions in 9 areas: hoisting, earthwork, road building & maintenance, mining, concrete & paving, tunnel-building & underground construction, high-altitude firefighting equipment & special-purpose vehicles, railway & bridge construction, sanitation engineering. All these solutions can be customized to suit our customers' needs.

At XCMG, our five-continent sales network gives our products worldwide visibility. We have 300 overseas distributors, over 10 overseas manufacturing bases and KD (Knockdown) factories, and products in more than 180 countries and regions. We supply our global customers with pre-sales, mid-sales and after-sales service, and a convenient, efficient one-stop financing and leasing service. XCMG's total annual exports and overseas income consistently come top of the industry in China.

We care deeply for the welfare of the people. We support numerous charitable causes, and are quick to the scene during disaster relief efforts.

XCMG is all set to become an eternal brand with our feet on the ground and eyes on the horizon. XCMG's ambition leads us forever forwards. XCMG is scaling its Everest, and is determined to reach the top.

The XE18U comes with every feature you expect from a mini excavator in its tonnage.

Variable angle boom, 60° to the left and 50° to the right, zero swing tail, and retractable undercarriage give you an edge when undertaking operations in confined sites such indoors, basement, garden, and community landscapes.

Powered by a reliable 15.8 hp Kubota engine, you can count on it to finish tough jobs in various operating conditions. When it comes to efficiency, versatility is a critical factor. That's why the machine is compatible to multiple attachments that can be installed within a short period of time with its manual quick coupler. You will finish the operations with ease and comfort in the jobsite.





High Performance in Tight Conditions

Compact Machine with Excellent Performance

This mini excavator is ready for today's tough jobs. The XE18U with OPG/TOPS/ROPS(ISO 3471) canopy provides excellent visibility, stability, optimal comfort and safety for the operator to finish jobs in tight corners that demand precision control and state-of-the-art performance. Features, such as, Zero-tail swing, hydraulic retractable undercarriage, angle boom, and powerful digging forces can always give the operator confidence. Added with high reliability, low operating costs, and superior efficiency, and you've got the ideal mini machine for a wide range of demanding jobs.



— Zero-tail Swing

With zero-tail swing, even the most confined space costs no troubles for the operator. The tail always stays within the width of the tracks (when extended) when you turn the canopy throughout its 360-degree turning radius not worries about damaging any objects. During the engineering stage of the zero-tail XE18U, balance, fast and smooth operation were our main targets. With these targets in mind, we launched this compact excavator with excellent features to its full potential in urban environments, landscaping, minor demolition and other utilities works.

— Extended Undercarriage

With the standard hydraulic retractable undercarriage passing through a narrow doorway or gate is easy. While the extended undercarriage guarantees the operator better stability, lifting and loading performance.



— Angle Boom

The left (60°) and right (50°) boom swing angles give the operator confidence and efficiency during complex operating conditions like parallel wall digging or travelling in narrow spaces.

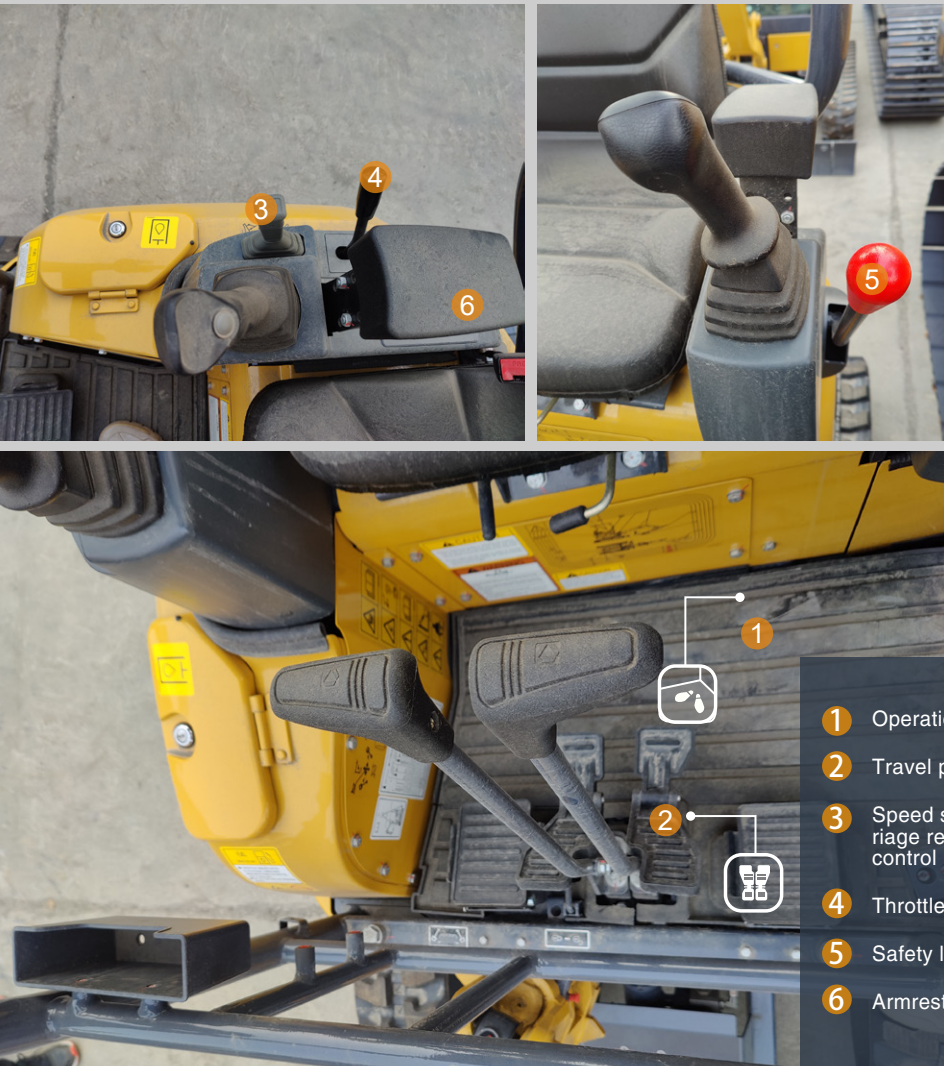
— AUX1 Attachment Pipelines

The standard single-way and dual-way auxiliary hydraulic pipelines are ideal for easy control of multiple attachments.

Operational Comfort

Spacious Operator Environment with Ergonomic Control Layouts

The XE18U provides an uncompromised operator environment – which, together with excellent visibility, provides unmatched operator comfort and safety. This machine is built around the operator – providing optimal ergonomics for operators of all sizes. Access to the seat is convenient thanks to the large canopy. Features like adjustable armrests, color monitor, cup holder, washable mat, adjustable seat belt, the operator can finish the work with ease.



- 1 Operation station
- 2 Travel padel
- 3 Speed shift & undercarriage retract lever & blade control lever
- 4 Throttle lever
- 5 Safety lever
- 6 Armrest

Easy Access for Maintenance

The tilting cab provides quick and easy access to all inspection and maintenance points

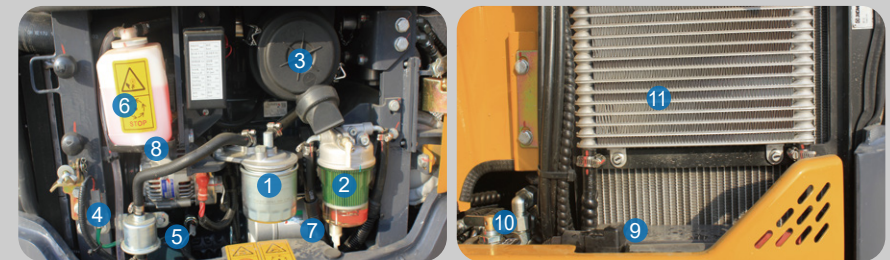
Easy Service Access

The XE18U is developed with particular attention of convenient service access. All main components including engine oil filter, fuel filter, air cleaner, and water separator are grouped in a single access point when the rear hood is open for daily service. And the grouped fluid filling points can be easily accessed under the canopy.



Lower cost of ownership

The XE18U is designed for lower maintenance cost with longer service intervals– resulting in more machine uptime on-site. Meanwhile, the skilled XCMG-trained technicians are available to provide extra supports when required.



- 1 Fuel filter
- 2 Water separator
- 3 Air filter
- 4 Engine oil filter
- 5 Engine oil level check
- 6 Coolant
- 7 Start motor
- 8 DC generator
- 9 Battery
- 10 Main switch
- 11 Radiator & Oil cooler

Safety Features

To Protect the Machine and Operating Sites

The routes of hydraulic pipelines and hoses are well-organized and the blade cylinder is guarded to avoid impacts and damages from rocks and other debris during movements. The over heat warning can remind the operator when necessary to better protect the engine. And the continuous rubber tracks can minimized damage made to the paved operating sites.



› To Protect the Operator and People Around

Rotation warning beacon with buzzer, emergency stop, lock lever, rear mirrors on both sides, battery disconnect switch, and the large OPG/TOPS/ROPS certified canopy with four-post make sure both the operator and people around the machine can be well-protected.





Technical Specifications

Engine

XE18U

Make/model	Kubota/D902/Tier 4F
Fuel/cooling	Diesel/Liquid, forced circulation
No. of cylinders	3
Piston displacement	898 cm ³ (54.8 in ³)
Power output	11.8 kW/2300 rpm (15.8 hp /2300 rpm)
Max torque	51.3 N·m/1800 rpm (37.8 ft.lb/1800 rpm)
Bore × stroke	72 mm×73.6 mm (2.8 in.×2.9 in.)
Alternator	12 V/40 A

Hydraulic system

This original XCMG design allows independent and combined operations of all functions by hydraulic pilot controlled levers.

> Pump

XE18U

Type	Load-sensing axial-piston pump with variable displacement
Maximum system flow rate	64.4 L/min (17 gal/min)
AUX1 maximum flow rate	20 L/min (5.3 gal/min)
AUX1 standard pressure	150 bar (2,175.6 psi)

> Maximum system pressure

XE18U

Boom	253 bar (3,669.5 psi)
Arm / bucket / travel	253/253/210 bar (3,669.5/3,669.5/3,045.8 psi)
Swing	110 bar (1,595.4 psi)

Undercarriage

Retractable undercarriage. The heavy-duty crawler chassis is very resilient with its fully welded, stress-free structure. Long service life is ensured by the use of first-class materials: hydraulic chain adjusters with shock-absorbing return springs, lifetime-lubricated track rollers and idlers.

> Number of rollers and track shoes

XE18U

Bottom rollers (per side)	3
Track shoes	Rubber
Overall track length	1 638 mm (5'4")
Shoe width	230 mm (9")

Fluid capacities

XE18U

Cooling system (radiator capacity)	4 L (1 gal)
Engine lubrication plus oil filter	3.8 L (1 gal)
Fuel tank	17 L (4.5 gal)
Hydraulic tank	18 L (4.8 gal)
Hydraulic system	14.2 L (3.8 gal)

Drive

Each track is driven by an independent, high-torque, axial piston motor through planetary reduction gears. Two control levers provide smooth travel or counterrotation upon demand.

> Speed & traction

XE18U

Travel speed (low - high)	2.5-3.3 km/h (1.5-2.1 mph)
Traction force	15.6 kN (3,507 lbf)
Gradeability	30°

Swing mechanism

High-torque, axial piston motor with planetary reduction gear bathed in oil. Swing circle is single-row, shear type ball bearing with induction-hardened internal gear. Internal gear and pinion gear immersed in lubricant. A two position swing lock secures the upper structure for transportation.

> Swing system

XE18U

Boom swing, left	60°
Boom swing, right	50°
Swing speed	9 rpm

Environment

Noise levels comply with environmental regulations (dynamic values).

> Noise emission

XE18U

Noise level LwA (ISO 6395)	93 dB(A)
----------------------------	----------

Digging forces (ISO 6015)

XE18U

Digging force, standard arm (ISO 6015)	10 kN (2,248.1 lbf)
Digging force, long arm (ISO 6015)	8 kN (1,798.5 lbf)
Digging force, bucket (ISO 6015)	16 kN (3,596.9 lbf)

Weight

XE18U

Operating weight with canopy and bucket (ISO 6016)	1 795 kg (3,957.3 lb)
Ground pressure with rubber tracks	0.29 kgf/cm ² (4.1 psi)
Transport mass (no attachment)	1 720 kg (3,792 lb)
Weight of steel tracks	103 kg (227.1 lb)
Weight of rubber tracks	62 kg (136.7 lb)
Additional weight for long arm	12 kg (26.5 lb)

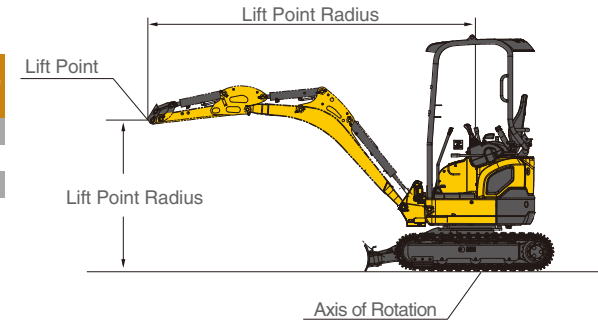


Lifting Capacities

XE18U

Canopy • standard arm (950 mm/3'1") • extended undercarrige • without bucket

Lift Point Height	Over Front			Over Side				Max Radius (mm/ft)	
	Lift At Max Radius (Kg/lb)	1 m/3'3"	2 m/6'7"	3 m/9'10"	Lift At Max Radius (Kg/lb)	1 m/3'3"	2 m/6'7"		3 m/9'10"
2 m/6'7"	313.2/690.5		*296.2/653		256.8/566.1		*296.2/653		2 946/9'8"
1 m/3'3"	258.3/569.5		536.2/1,182.1	296.7/654.1	211.2/465.6		427.8/943.1	242.3/534.2	3 301/10'10"
0 m	256.8/566.1		500.6/1,103.6	285.8/630.1	208.9/460.5		394.7/870.2	231.7/510.8	3 249/10'8"
-1m/-3'3"	316.9/698.6	*970.1/2,138.7	497.3/1,096.4		255.6/563.5	*970.1/2,138.7	391.6/863.3		2 760/9'1"



Canopy • long arm (1 120 mm/3'8") • extended undercarrige • without bucket

Lift Point Height	Over front blade up/down			Over Side				Max Radius (mm/ft)	
	Lift At Max Radius (Kg/lb)	1 m/3'3"	2 m/6'7"	3 m/9'10"	Lift At Max Radius (Kg/lb)	1 m/3'3"	2 m/6'7"		3 m/9'10"
3 m/9'10"	*290.9/641.3				*290.9/641.3				2 175/7'2"
2 m/6'7"	*299.7/660.7			*299.9/661.2	230.5/508.2			246.5/543.4	3 125/10'3"
1 m/3'3"	*280.4/618.2		*508.4/1,120.8	*329.1/725.5	192.7/424.8		424.1/935	237.6/523.8	3 457/11'4"
0 m	*261.7/576.9		*586.1/1,292.1	*327.6/722.2	190.5/420		385.5/850	225.5/497.1	3 408/11'2"
-1m/-3'3"	*248.1/547	*905.4/1,996.1	*450.1/992.3		228/502.7	*905.4/1,996.1	380.7/839.3		2 953/9'8"

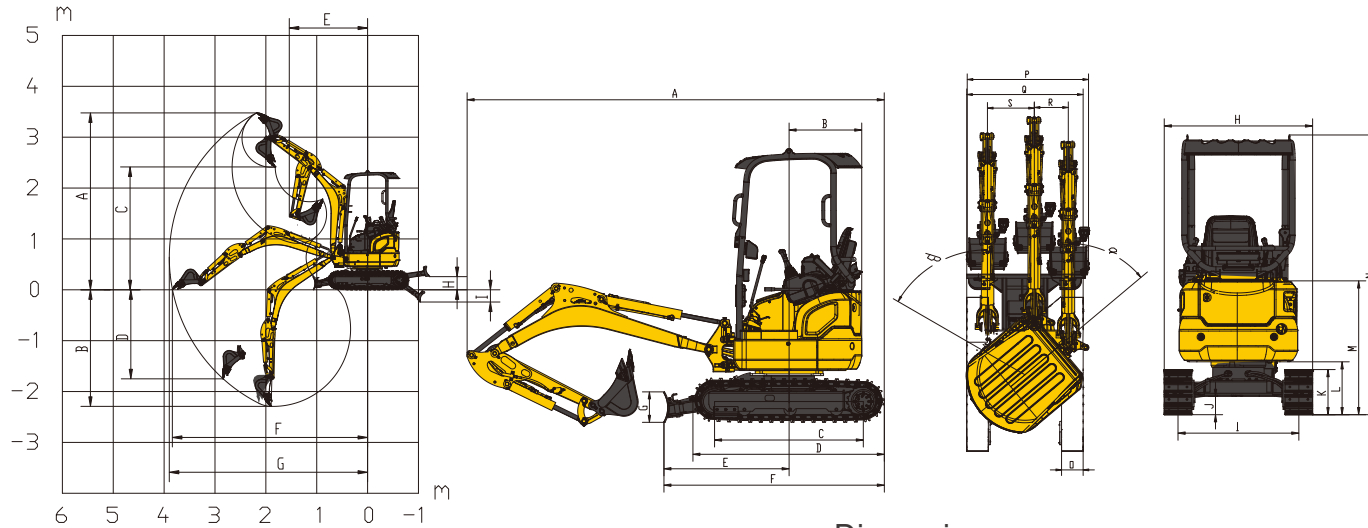
: Over front

: Over side or 360°

1. The lifting capacity is based on the ISO10567 standard.
2. * = The maximum lifting capacity is limited by the hydraulic capacity of the machine.
3. The lifting capacity does not exceed 87% of the hydraulic capacity or 75% of the tipping load with the machine on level and firm ground.
4. The operator should be familiar with the machines operating- and maintenance manual. Local regulations concerning the safe operation of machinery must be followed at all times.
5. The lift diagrams only covers machines that are originally built by XCMG: without lifting chains and any other lifting equipment.
6. When the excavator is used to lift or handle materials, it must comply with local.



Technical Specifications



Dimensions

Working range

XE18U

A	Maximum digging height - std arm	3 475 mm (11'5")
	Maximum digging height - long arm	3 495 mm (11'6")
B	Maximum digging depth - std arm	2 290 mm (7'6")
	Maximum digging depth - long arm	2 450 mm (8'0.5")
C	Maximum dumping height - std arm	2 415 mm (7'11")
	Maximum dumping height - long arm	2 550 mm (8'4")
D	Maximum vertical wall digging depth - std arm	1 750 mm (5'9")
	Maximum vertical wall digging depth - long arm	1 970 mm (6'6")
E	Minimum swing radius - std arm	1 550 mm (5'1")
	Minimum swing radius - long arm	1 580 mm (5'2")
F	Maximum digging reach at ground level - std arm	3 840 mm (12'7")
	Maximum digging reach at ground level - long arm	3 950 mm (12'12")
G	Maximum digging reach - std arm	3 900 mm (12'10")
	Maximum digging reach - long arm	4 005 mm (13'2")
H	Maximum dozer lifting height	260 mm (10")
I	Maximum dozer cutting depth	180 mm (7")

XE18U

A	Overall length	3 560 mm (11'8")
B	Tail slew radius	620 mm (24")
C	Tumbler length	1 270 mm (4'2")
D	Track length	1 638 mm (5'4")
E	Dozer blade, maximum reach at ground level	1 055 mm (3'6")
F	Undercarriage length	1 880 mm (6'2")
G	Dozer blade height	260 mm (10")
H	Overall width	990/1 240mm (39"/41")
I	Track gauge	760/1 010mm (30"/3'4")
J	Minimum ground clearance	145 mm (6")
K	Track height	380 mm (15")
L	Ground clearance of counterweight	455 mm (18")
M	Overall height of engine hood	1 135 mm (3'9")
N	Overall height	2 348 mm (7'8")
O	Track shoe width	230 mm (9")
P	Working width at maximum right-hand rotation	1 300 mm (4'3")
Q	Working width at maximum left-hand rotation	1 235 mm (4'1")
R	Maximum boom offset to the right	335 mm (13")
S	Maximum boom offset to the left	500 mm (20")

› Standard and Optional Equipment

Engine

Auto-preheating	●
Radial seal air cleaner	●
Air prefilter	●
Fuel oil gauge	●
Fuel-water quickly release device	●
Air pressure difference indicator	●

Hydraulic system

Three way ball valve	●
Single or dual way pipeline	●
Hydraulic oil ISO VG 46	●
Hydraulic oil ISO VG 32	○
Hydraulic oil ISO VG 68	○
Common joysticks on left and right	●

Cab & interior

Canopy(TOPS/ROPS/OPG)	●
Standard seat	●
Adjustable handrail up and down	●
Color LCD display with warning and working hours information	●
Travel control pedal with detachable manual control lever	●
Cup holder	●
Washable floor mat	●
Retractable safety belt	●
High and low travel speed switch	●
Pedal valve with double circuit control	●
File packet	●

Undercarriage

Track guards for both sides	○
2x3 bottom rollers	●
2x2 carrier rollers	●
Tow ring on the bottom frame	●
230 mm(9")rubber track	●
2x38 joints track , 230 mm(9")track with double steel grouser shoes	○
Guard kits: sealing plate of travel motor	●
Dozer	●

Boom, arm and bucket

Boom-1.828 m(5'12")	●
Arm-0.95 m(3'1")	●
0.04 m³(0.0 5yd³)/435 mm(1'5")bucket	●
Arm-1.12 m(3'8")	○
0.02 m³(0.026 yd³)bucket	○
Scarifier	○
Breaking Hammer(without accumulator)	○
Timber grab	○
Quick Coupler	○

Electrical system

Battery (430 CCA)	●
40 A alternator	●
1.2 kW starter motor	●
One working light on the boom	●
Travel buzzer	●
Rotating beacon	●
Emergency stop switch	●

Conterweight

0.17 t(375 lb)counterweight	●
-----------------------------	---

Safety and guards

Rear hood lock	●
Warning horn	●
Battery disconnect switch	●
Overheating warning	●
Safety handrail	●
Hydraulic safety locking lever	●

Standard: ●

Optional: ○

· Some of these standard or optional equipment may not be available for certain markets.

· Pictures may include attachments and optional equipment that are not available in your area. · Materials and specifications are subjected to change without advance notice.

· Please contact your local XCMG dealer for more information on availability or to customise your machine to suit your applications requirements.

Optimum Services , XCMG Guaranteed



XCMG approved attachments



Genuine parts



Financial solutions



Maintenance contract



Telematics



Professional Integrated Complete Solutions

XCMG group has built a strong reputation based on the quality, reliability and durability of its construction machinery. What's more, XCMG has gradually established a service network to constantly provide its local integrated and highly efficient complete solutions for all customers.

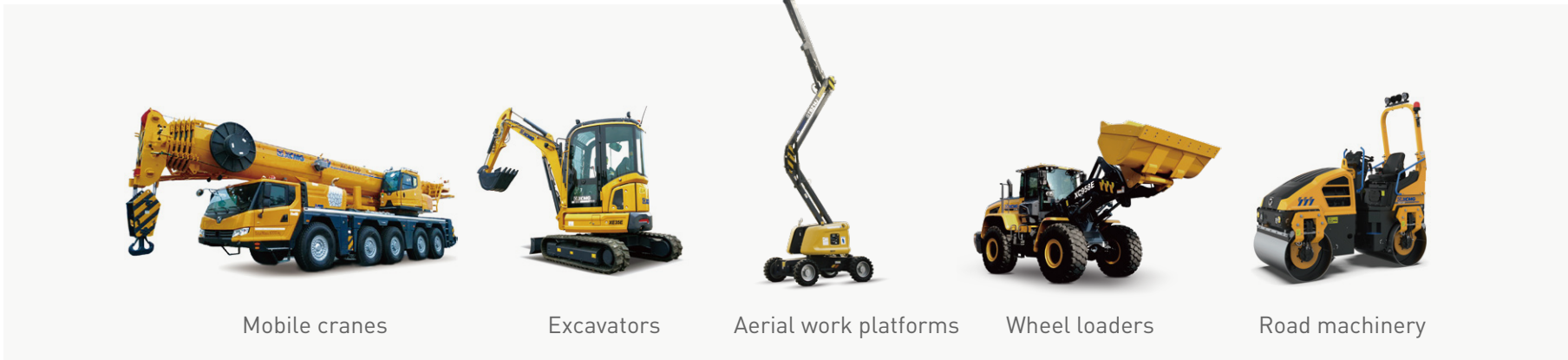
Full Range of Services Ready for you

In order to respond to your needs as fast as possible, XCMG experts are on their way to your job site from one of our facilities near you. Full range of services are available in order to reduce your total cost of ownership and increase your revenue.

XCMG Global Spare parts System

Number	Related Function	Name	Quantity	Unit
1	CONTROL BOX STRUCTURE	CONTROL BOX STRUCTURE	1	PC
2	CONTROL BOX ELECTRIC	CONTROL BOX ELECTRIC	1	PC

Number	Related Function	Name	Quantity	Unit
1	CAB ASSEMBLY	CAB ASSEMBLY	1	PC
2	SOLENOID VALVE	SOLENOID VALVE	8	PC
3	SOLENOID VALVE	SOLENOID VALVE	8	PC
4	SOLENOID VALVE	SOLENOID VALVE	2	PC
5	SOLENOID VALVE	SOLENOID VALVE	4	PC
6	SOLENOID VALVE	SOLENOID VALVE	16	PC
7	SOLENOID VALVE	SOLENOID VALVE	4	PC
8	SOLENOID VALVE	SOLENOID VALVE	4	PC
9	SOLENOID VALVE	SOLENOID VALVE	4	PC



Mobile cranes

Excavators

Aerial work platforms

Wheel loaders

Road machinery



XCMG

XCMG FOR YOUR SUCCESS

